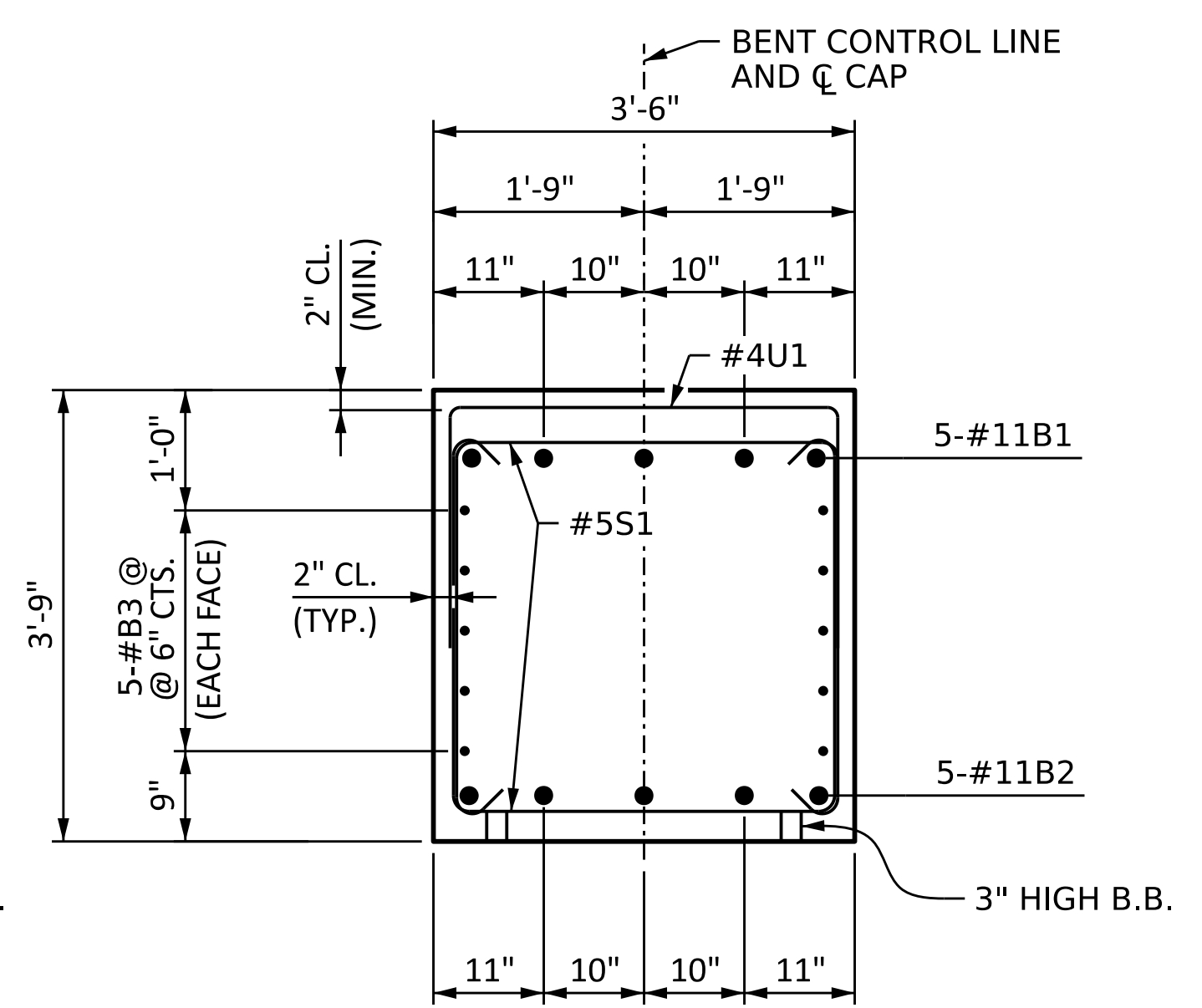
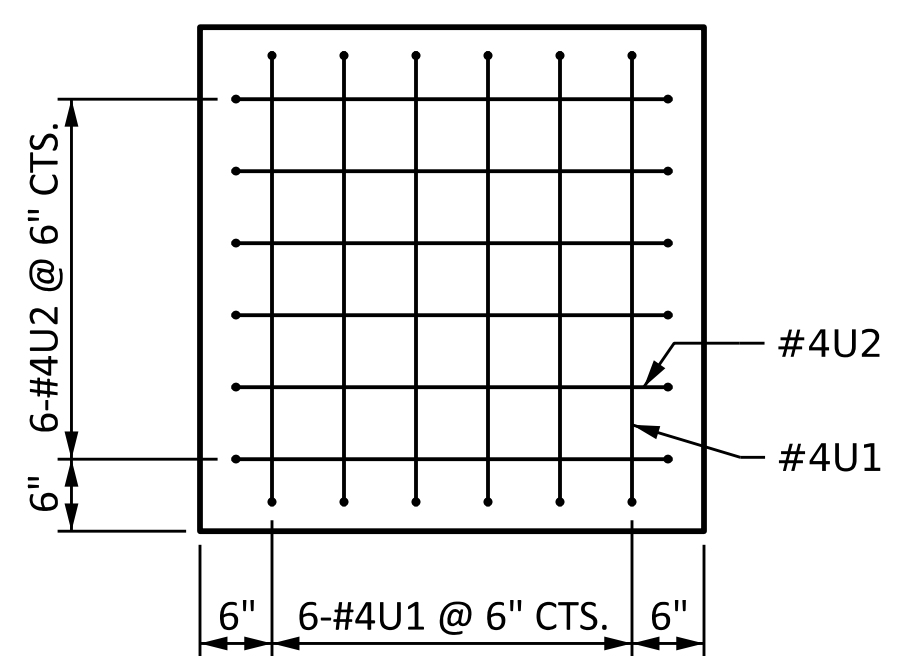


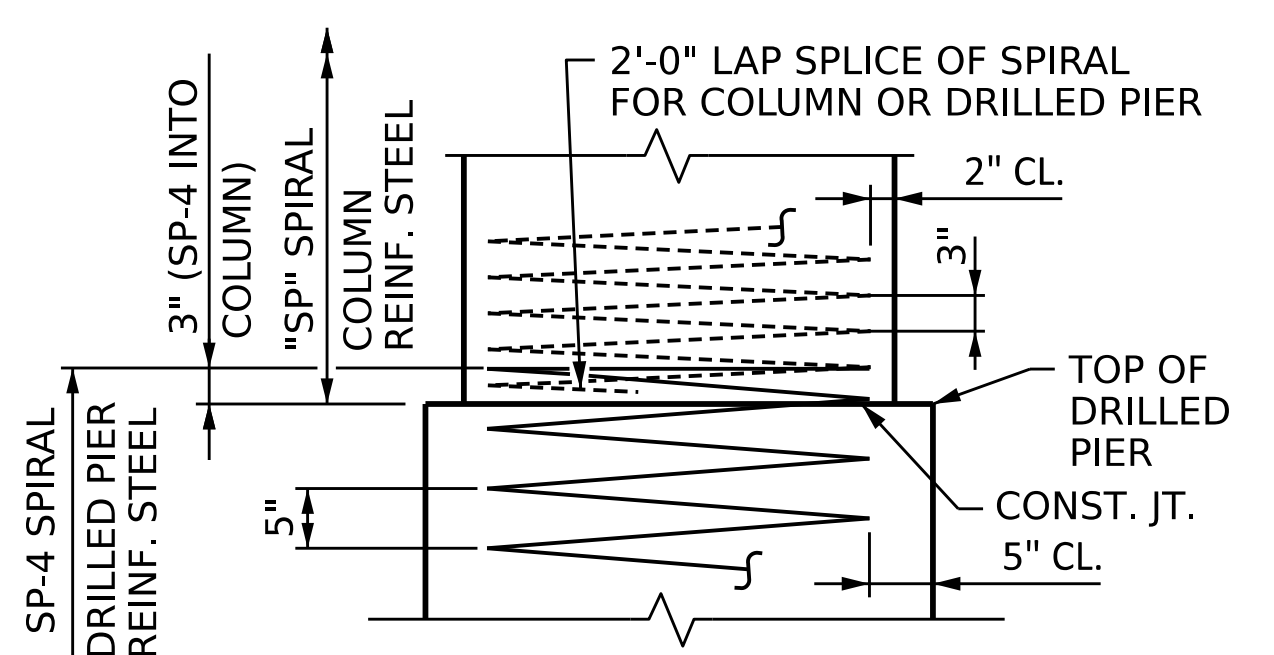
**SECTION A-A**



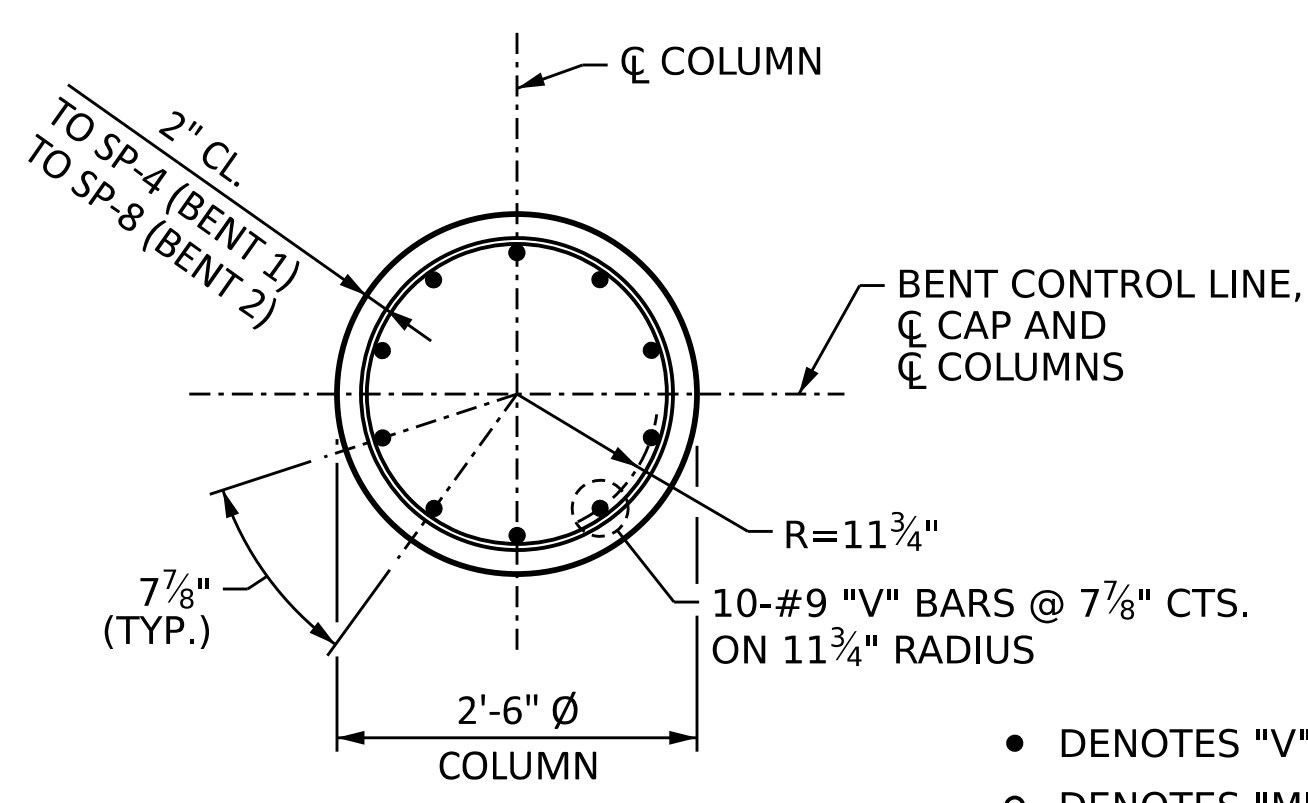
**SECTION B-B**



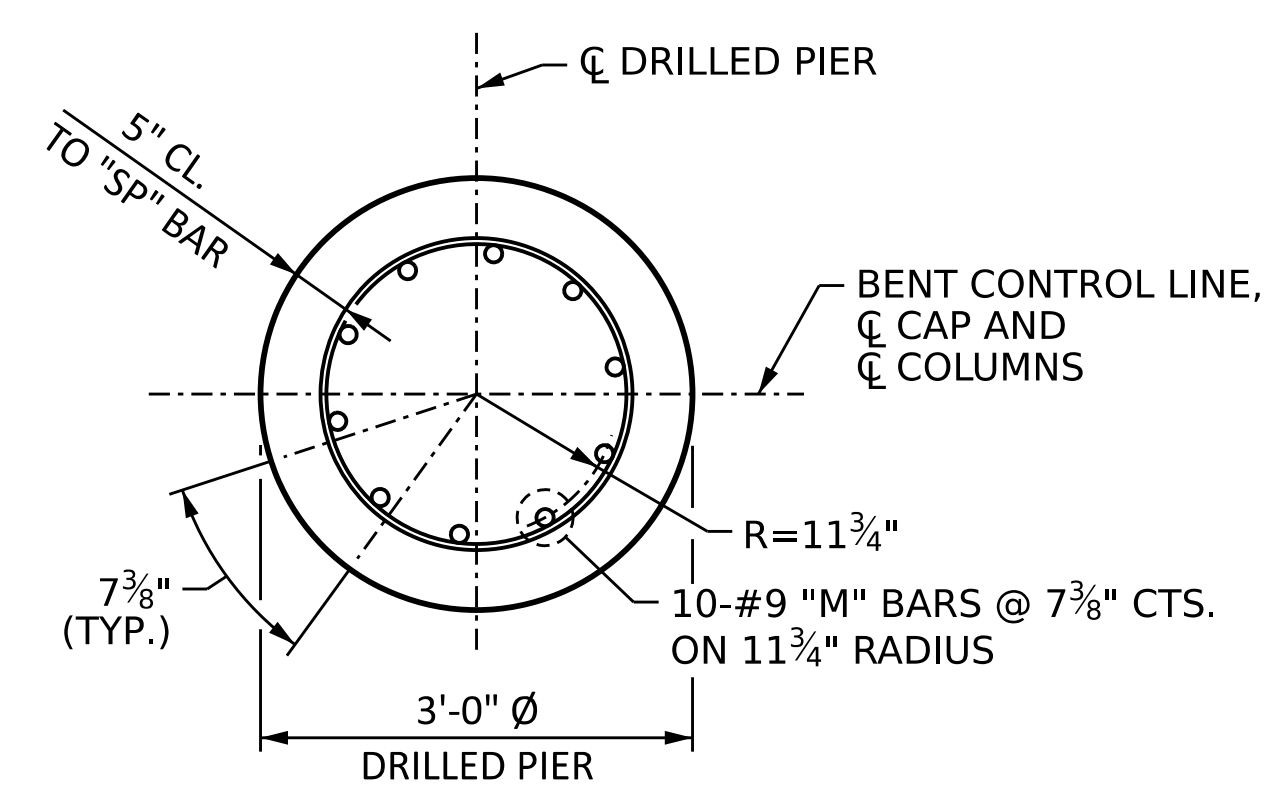
**VIEW X-X**



**CONSTRUCTION JOINT DETAIL**



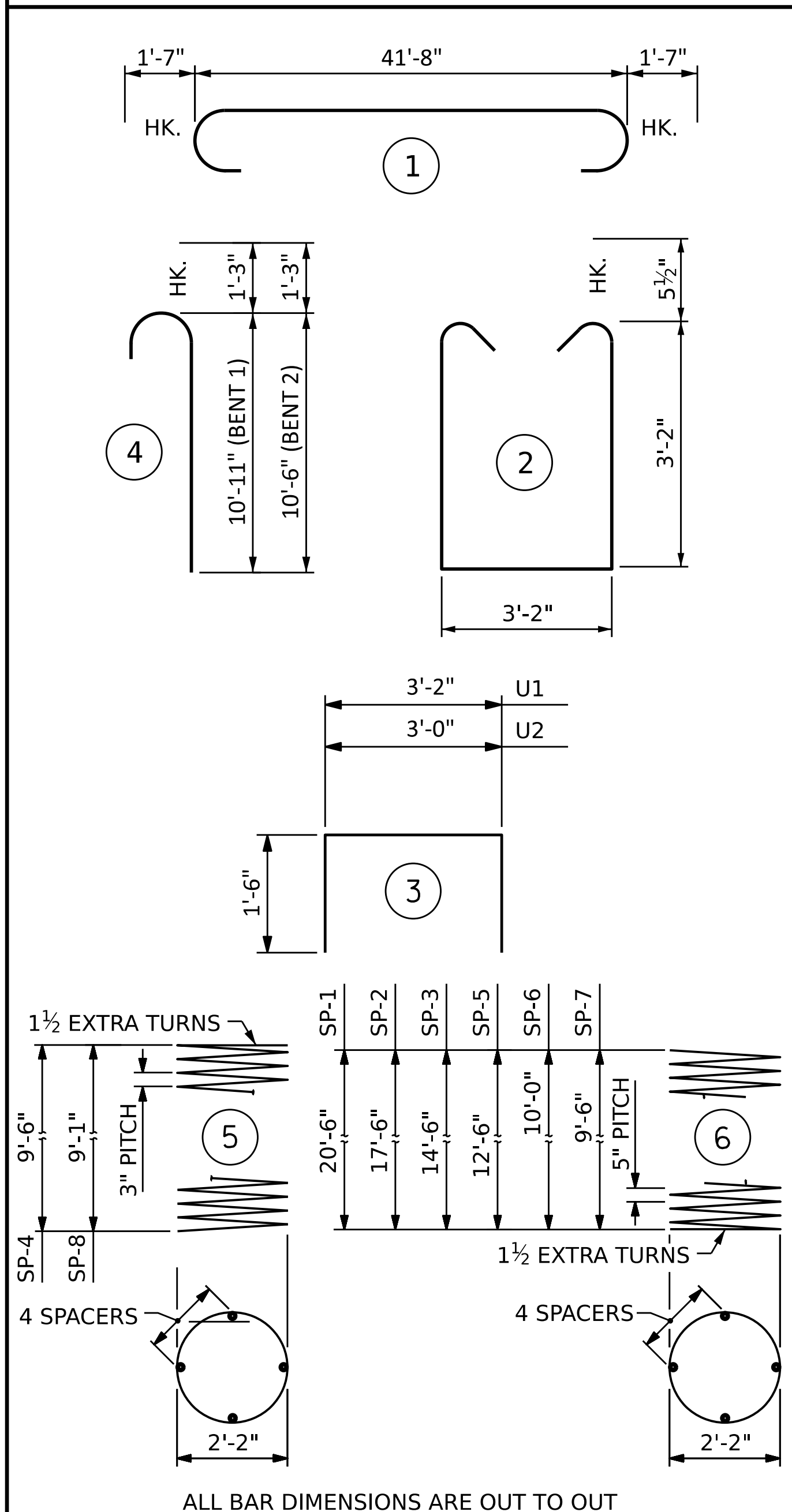
**SECTION C-C**



**SECTION D-D**

- DENOTES "V" BARS
- DENOTES "M" BARS

**BAR TYPES**



ALL BAR DIMENSIONS ARE OUT TO OUT

**BILL OF MATERIAL**

BENT 1						BENT 2					
BAR	NO.	SIZE	TYPE	LENGTH	WEIGHT	BAR	NO.	SIZE	TYPE	LENGTH	WEIGHT
B1	5	#11	1	44'-10"	1191	B1	5	#11	1	44'-10"	1191
B2	5	#11	STR	41'-8"	1107	B2	5	#11	STR	41'-8"	1107
B3	10	#5	STR	41'-8"	435	B3	10	#5	STR	41'-8"	435
M1	10	#9	STR	27'-7"	938	M4	10	#9	STR	19'-7"	666
M2	10	#9	STR	24'-7"	836	M5	10	#9	STR	18'-1"	615
M3	10	#9	STR	21'-7"	734	M6	10	#9	STR	16'-7"	564
S1	78	#5	2	10'-5"	847	S1	78	#5	2	10'-5"	847
U1	44	#4	3	6'-2"	181	U1	44	#4	3	6'-2"	181
U2	12	#4	3	6'-0"	48	U2	12	#4	3	6'-0"	48
V1	30	#9	4	12'-2"	1241	V2	30	#9	4	11'-9"	1199
<b>REINFORCING STEEL</b>						<b>REINFORCING STEEL</b>					
7,558						6,853					
SP-1	1	*	6	349'-10"	365	SP-5	1	*	6	220'-3"	230
SP-2	1	*	6	302'-1"	315	SP-6	1	*	6	193'-0"	201
SP-3	1	*	6	254'-4"	265	SP-7	1	*	6	172'-6"	180
SP-4	3	**	5	272'-6"	546	SP-8	3	**	5	258'-10"	519
<b>SPIRAL COLUMN REINFORCING STEEL</b>						<b>SPIRAL COLUMN REINFORCING STEEL</b>					
LBS. 1,491						LBS. 1,130					
* THE SPIRAL SP-1, SP-2 & SP-3 SPIRAL REINFORCING STEEL SHALL BE W31 OR D-31 COLD DRAWN WIRE OR #5 PLAIN OR DEFORMED BAR.						* THE SPIRAL SP-1, SP-2 & SP-3 SPIRAL REINFORCING STEEL SHALL BE W31 OR D-31 COLD DRAWN WIRE OR #5 PLAIN OR DEFORMED BAR.					
**THE SPIRAL SP-4 SPIRAL REINFORCING STEEL SHALL BE W20 OR D-20 COLD DRAWN WIRE OR #4 PLAIN OR DEFORMED BAR.						**THE SPIRAL SP-4 SPIRAL REINFORCING STEEL SHALL BE W20 OR D-20 COLD DRAWN WIRE OR #4 PLAIN OR DEFORMED BAR.					
<b>CLASS "A" CONCRETE BREAKDOWN</b>						<b>CLASS "A" CONCRETE BREAKDOWN</b>					
POUR #2 - COLUMNS 5.0 C.Y.						POUR #2 - COLUMNS 4.8 C.Y.					
POUR #3 - CAP 9.8 C.Y.						POUR #3 - CAP 9.8 C.Y.					
<b>CLASS "A" CONCRETE TOTAL</b> 14.8 C.Y.						<b>CLASS "A" CONCRETE TOTAL</b> 14.6 C.Y.					
4'-0" Ø DRILLED PIERS						4'-0" Ø DRILLED PIERS					
POUR #1 - DRILLED PIERS C.Y. 14.1						POUR #1 - DRILLED PIERS C.Y. 9.0					

DESIGNED BY: J. WHEATLEY DATE: MAY 2024  
 DRAWN BY: M. HOBBS DATE: MAY 2024  
 CHECKED BY: E. LAWES DATE: MAY 2024  
 DESIGN ENGINEER OF RECORD: E. LAWES DATE: MAY 2024

**WSP**  
 WSP USA Inc.  
 434 FAYETTEVILLE STREET  
 SUITE 1500  
 RALEIGH, NC 27601  
 TEL: 1.919.836.4040  
 LICENSE NO. F-0165

DOCUMENT NOT CONSIDERED FINAL UNLESS ALL SIGNATURES COMPLETED  
 NORTH CAROLINA PROFESSIONAL ENGINEER SEAL 044167  
 ELIZABETH F. LAWES  
 ENGINEER  
 6/3/2024

PROJECT NO. **BR-0100**  
**RUTHERFORD** COUNTY  
 STATION: **18+28.00 -L-**  
 SHEET 2 OF 2

STATE OF NORTH CAROLINA  
 DEPARTMENT OF TRANSPORTATION  
 RALEIGH  
 SUBSTRUCTURE  
**BENTS 1 & 2  
 DETAILS AND  
 BILL OF MATERIAL**

REVISIONS				SHEET NO.
NO.	BY:	DATE:	NO.	DATE:
1			3	
2			4	

TOTAL SHEETS: 30