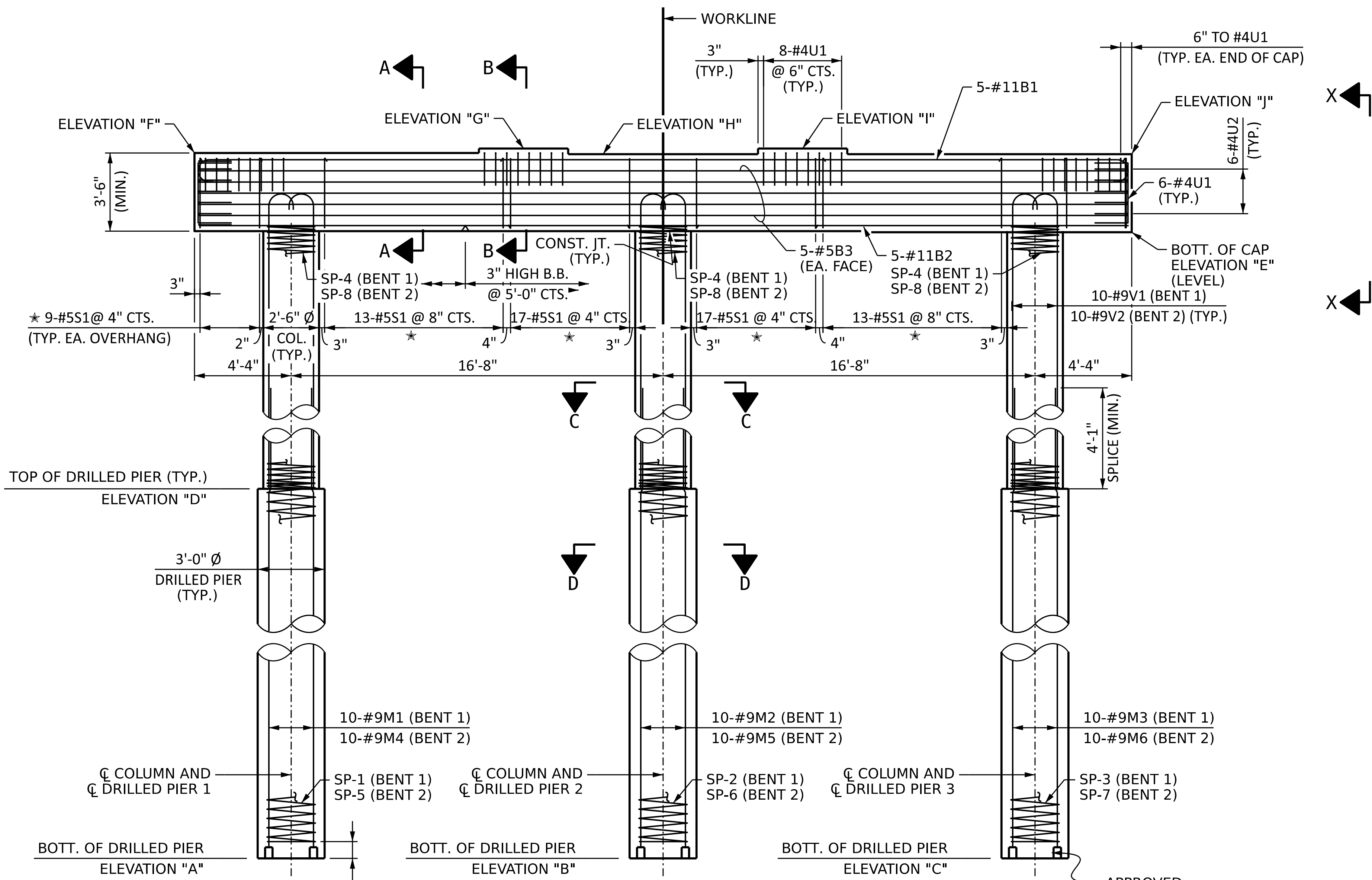


BENTS 1 & 2 PLAN

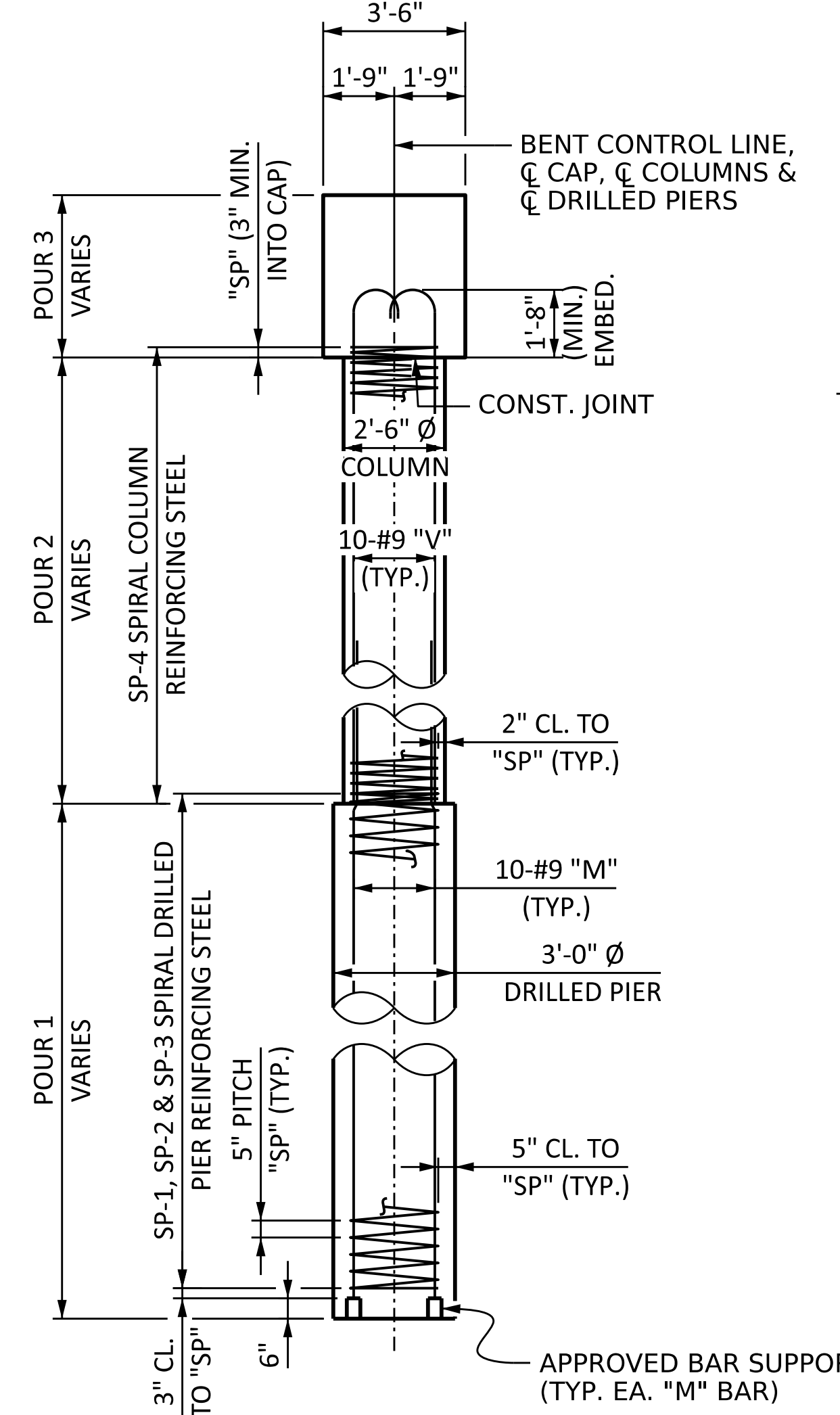
BENT ELEVATION TABLE		
ELEVATION	BENT 1	BENT 2
"A"	1072.17	1080.96
"B"	1075.17	1082.46
"C"	1078.17	1083.96
"D"	1093.17	1093.96
"E"	1,102.42	1,102.79
"F"	1,105.96	1,106.40
"G"	1,106.17	1,106.59
"H"	1,105.96	1,106.40
"I"	1,106.17	1,106.55
"J"	1,105.92	1,106.28

NOTES:

- STIRRUPS AND "U" BARS IN CAP MAY BE SHIFTED AS NECESSARY TO CLEAR ANCHOR BOLTS.
- HOOKS ON "V" BARS MAY BE TURNED AS NECESSARY FOR PLACING REINFORCING STEEL
- ★ INVERT ALTERNATE STIRRUPS
- FOR SECTIONS A-A, B-B, C-C AND D-D, AND VIEW X-X, SEE SHEET 2 OF 2.
- FOR DRILLED PIERS, SEE SECTION 411 OF THE STANDARD SPECIFICATIONS.
- BOTTOM OF DRILLED PIER ELEVATION IS FOR BID PURPOSES ONLY. FINAL ELEVATIONS WILL BE DETERMINED DURING CONSTRUCTION BY DRILLING A PILOT HOLE AT EACH DRILLED PIER LOCATION. SEE THE GEOTECHNICAL SPECIAL PROVISIONS FOR PILOT BORINGS.
- THE CONTRACTOR'S ATTENTION IS CALLED TO THE FACT THAT THE LONGITUDINAL REINFORCEMENT FOR DRILLED PIERS IS DETAILED BASED ON THE BOTTOM OF DRILLED PIER ELEVATION PLUS THREE (3) EXTRA FEET OF LENGTH FOR BID PURPOSES.
- ALL STEEL IN THE DRILLED PIERS IS INCLUDED IN THE PAY ITEMS FOR "REINFORCING STEEL" AND "SPIRAL COLUMN REINFORCING STEEL".

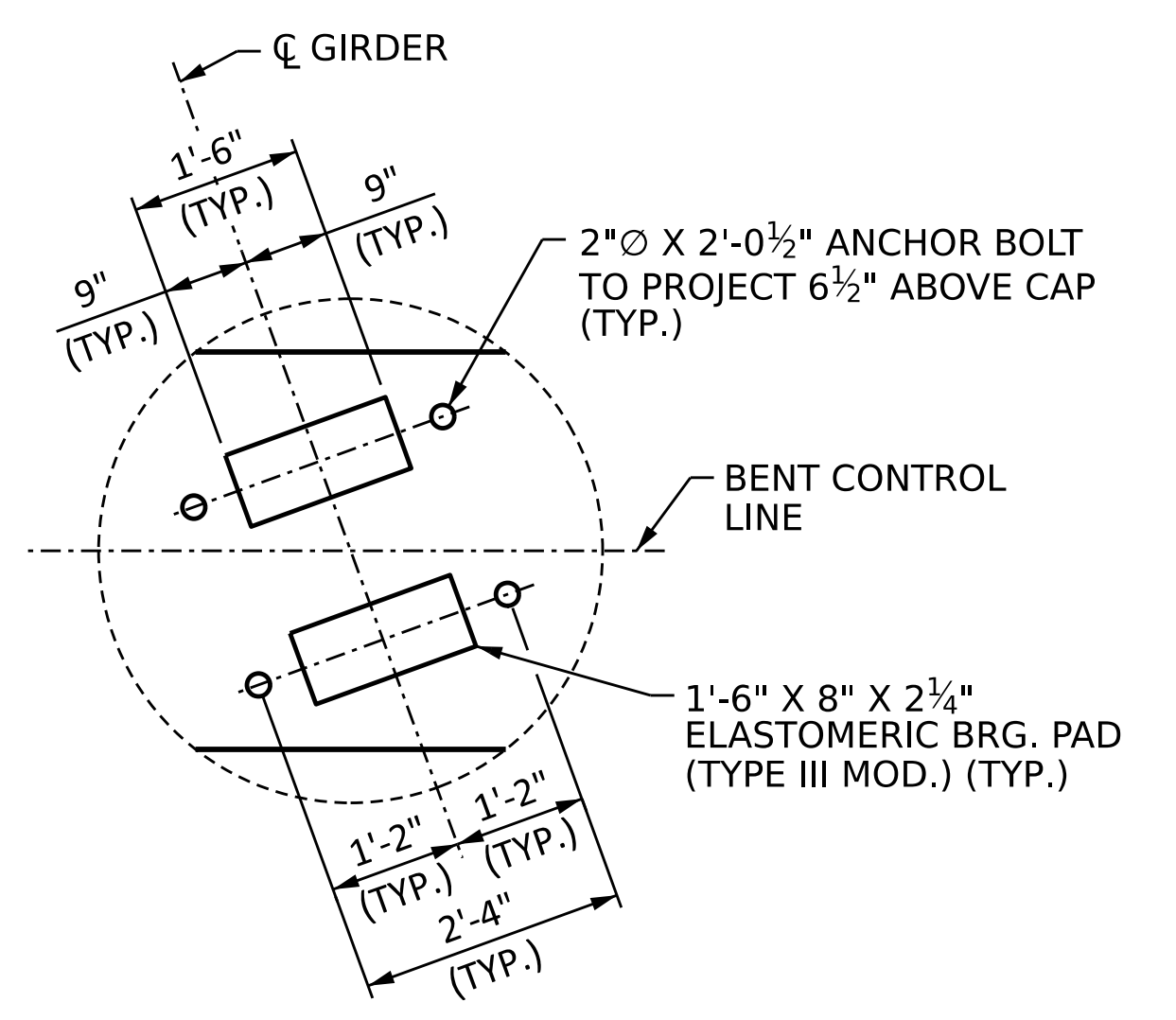


BENTS 1 & 2 ELEVATION



END ELEVATION

NOTE: BENT 1 SHOWN, BENT 2 SIMILAR



DETAIL "C"

(TYP. EA. GIRDER)

DESIGNED BY: J. WHEATLEY DATE: MAY 2024
 DRAWN BY: M. HOBBS DATE: MAY 2024
 CHECKED BY: E. LAWES DATE: MAY 2024
 DESIGN ENGINEER OF RECORD: E. LAWES DATE: MAY 2024

wsp
 WSP USA Inc.
 434 FAYETTEVILLE STREET
 SUITE 1500
 RALEIGH, NC 27601
 TEL: 1.919.836.4040
 LICENSE NO. F-0165

DOCUMENT NOT CONSIDERED FINAL
 UNLESS ALL SIGNATURES COMPLETED

STATE OF NORTH CAROLINA
 PROFESSIONAL ENGINEER
 SEAL 044167
 ELIZABETH F. LAWES
 12/18/2024

PROJECT NO. **BR-0100**
RUTHERFORD COUNTY
 STATION: **18+28.00 -L-**

SHEET 1 OF 2

STATE OF NORTH CAROLINA
 DEPARTMENT OF TRANSPORTATION
 RALEIGH
 SUBSTRUCTURE
**BENTS 1 & 2
 PLAN & ELEVATION**

REVISIONS				SHEET NO.
NO.	BY:	DATE:	NO.	DATE:
1			3	
2			4	

TOTAL SHEETS: 30