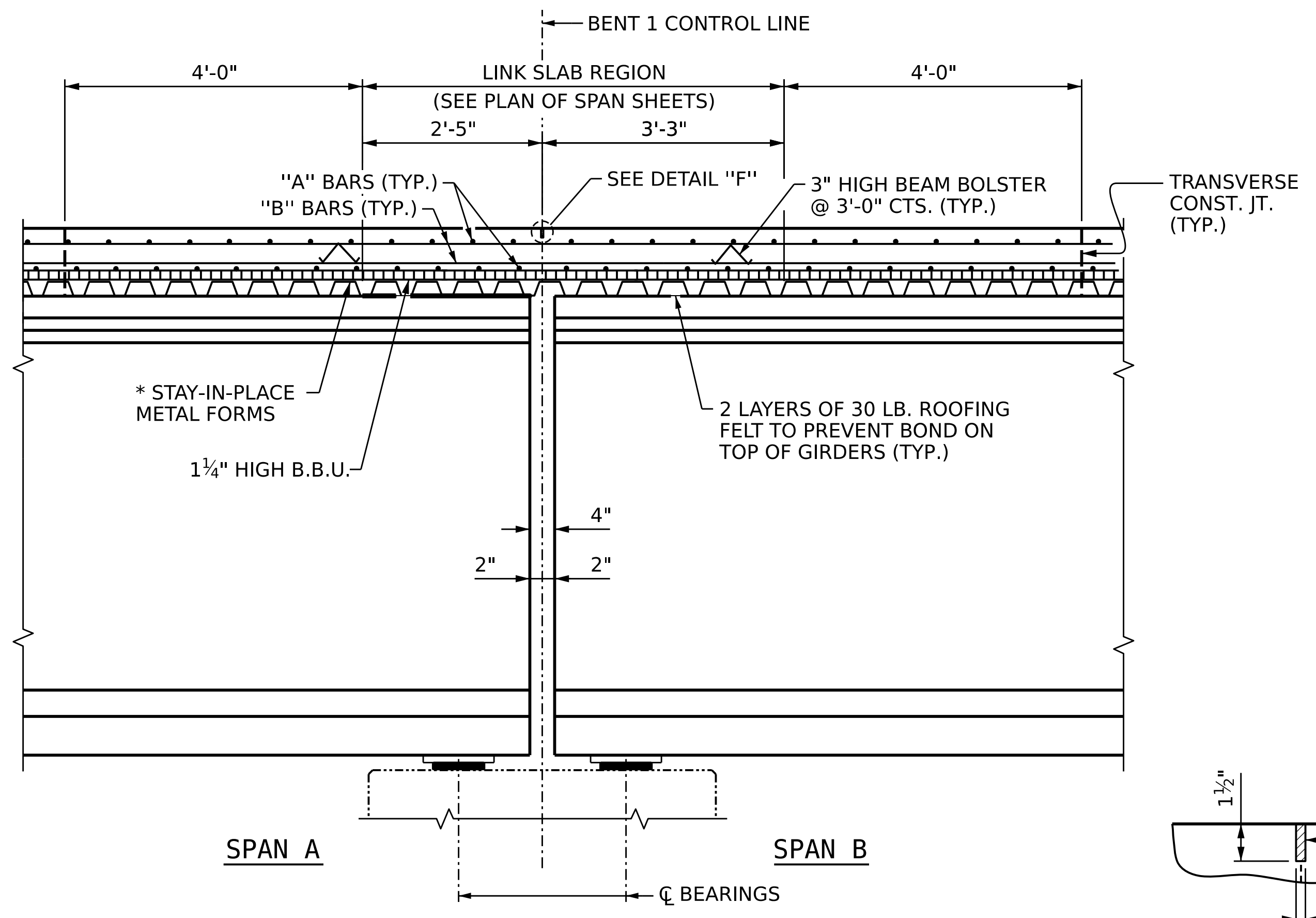


END OF GIRDER DETAIL AT INTEGRAL END BENT

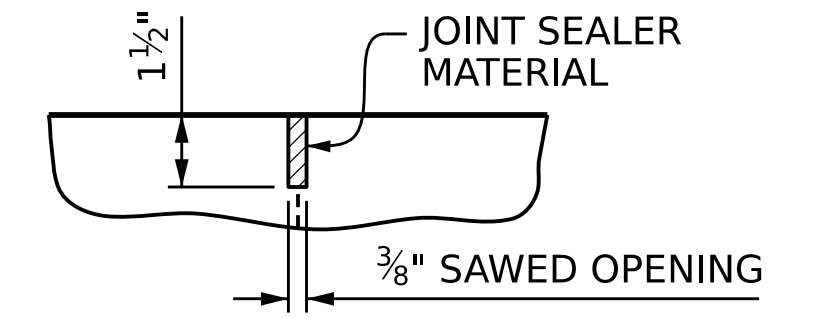
(END BENT 1 SHOWN, END BENT 2 SIMILAR BY ROTATION)
(SEE END BENT SHEETS FOR INTEGRAL END BENT REINFORCING DETAILS)



SECTION AT LINK SLAB

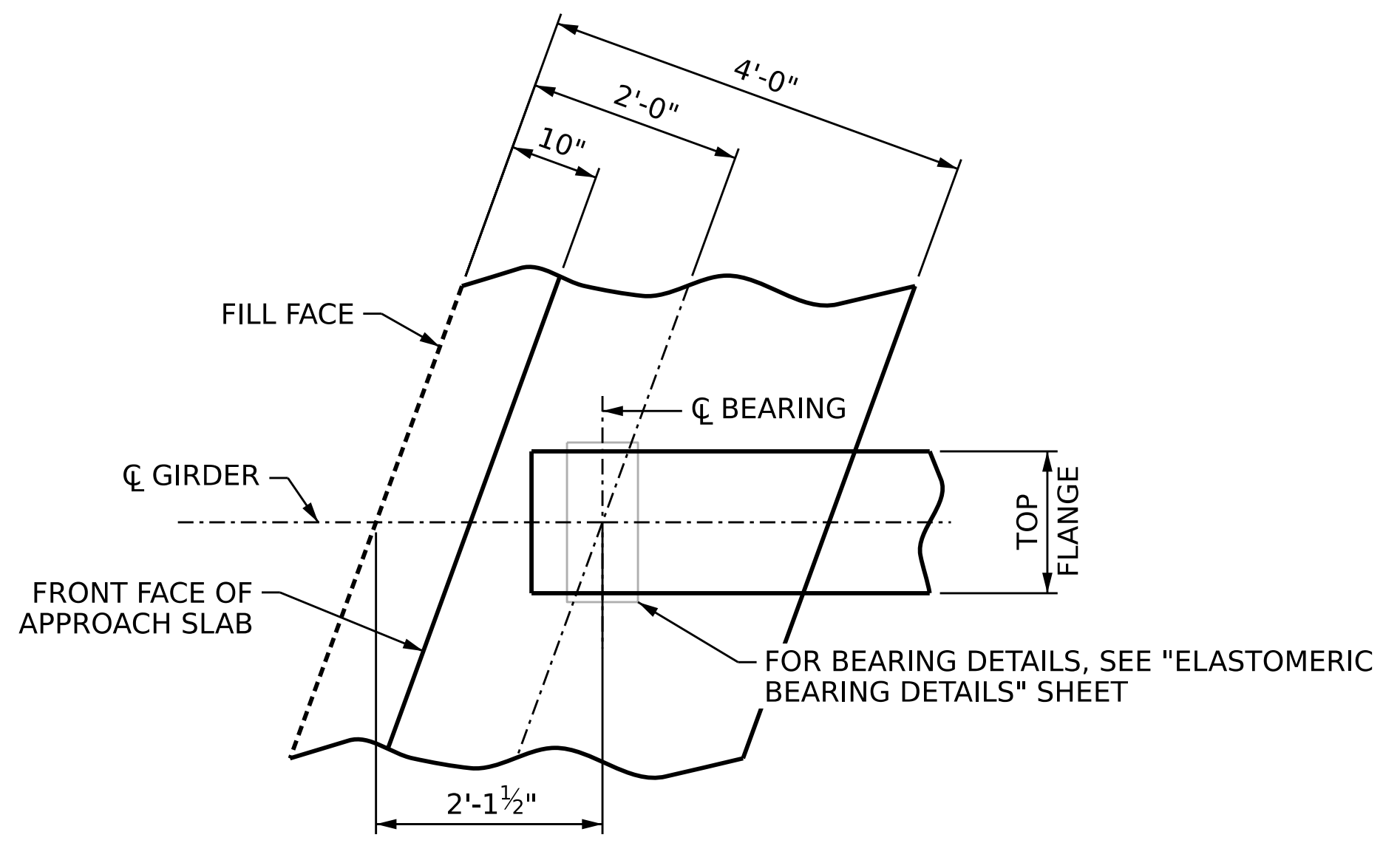
(SECTION SHOWN ALONG GIRDER)
(BENT 1 SHOWN, BENT 2 SIMILAR BY ROTATION)

* METAL STAY-IN-PLACE FORMS SHALL NOT BE WELDED TO THE GIRDER FLANGES IN THE REGION OF THE LINK SLAB.



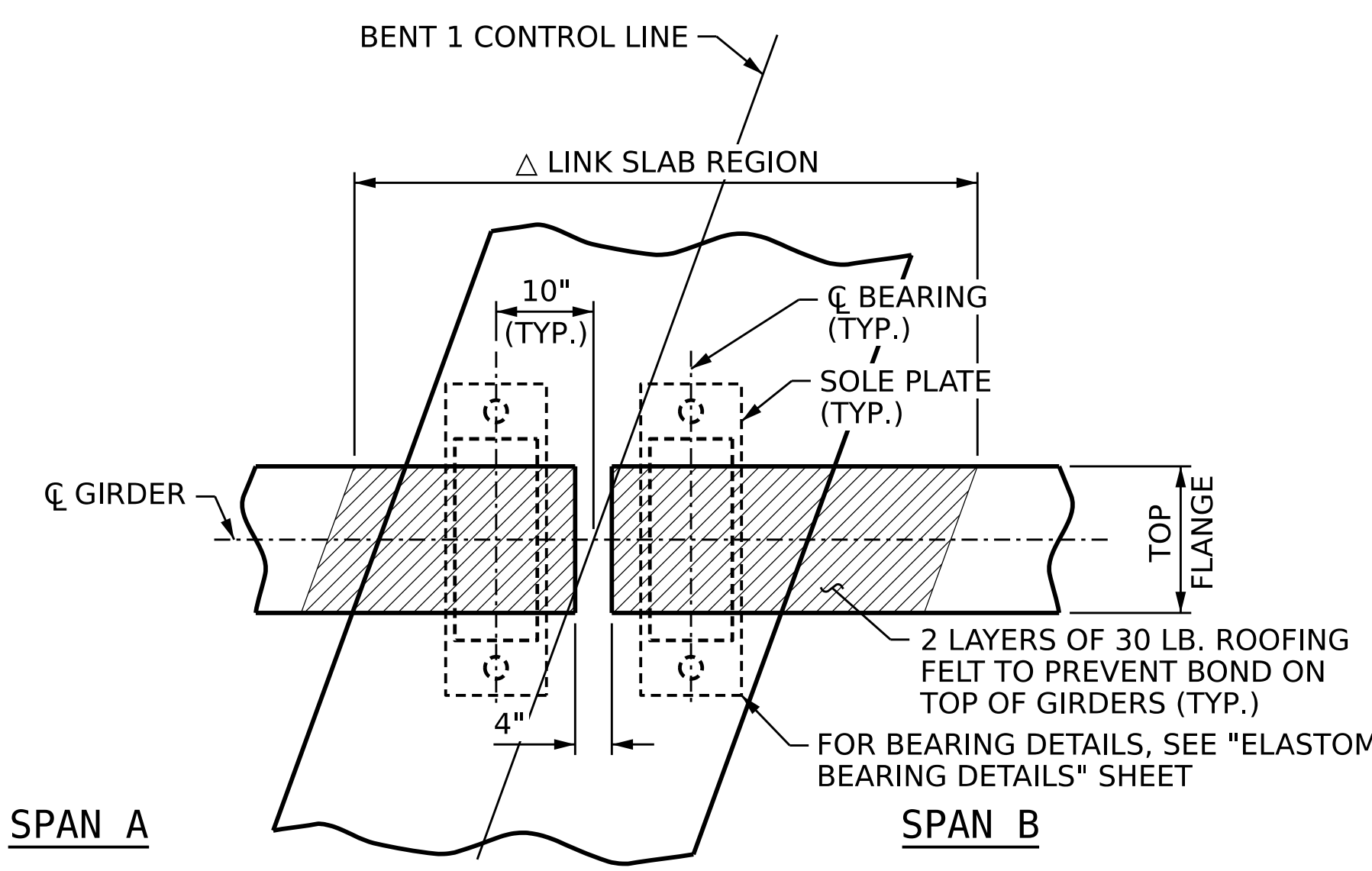
DETAIL "F"

1 1/2" DEEP X 3/8" WIDE CONTRACTION JOINT AT BENT CONTROL LINE SHALL BE SAWN WITHIN 24 HOURS OF POURING THE DECK. THE JOINT SHALL BE FILLED WITH JOINT SEALER MATERIAL. THE JOINT SEALER MATERIAL SHALL CONFORM TO THE REQUIREMENTS OF SECTION 1028-3 OF THE STANDARD SPECIFICATIONS.



PLAN OF GIRDER @ INTEGRAL END BENT

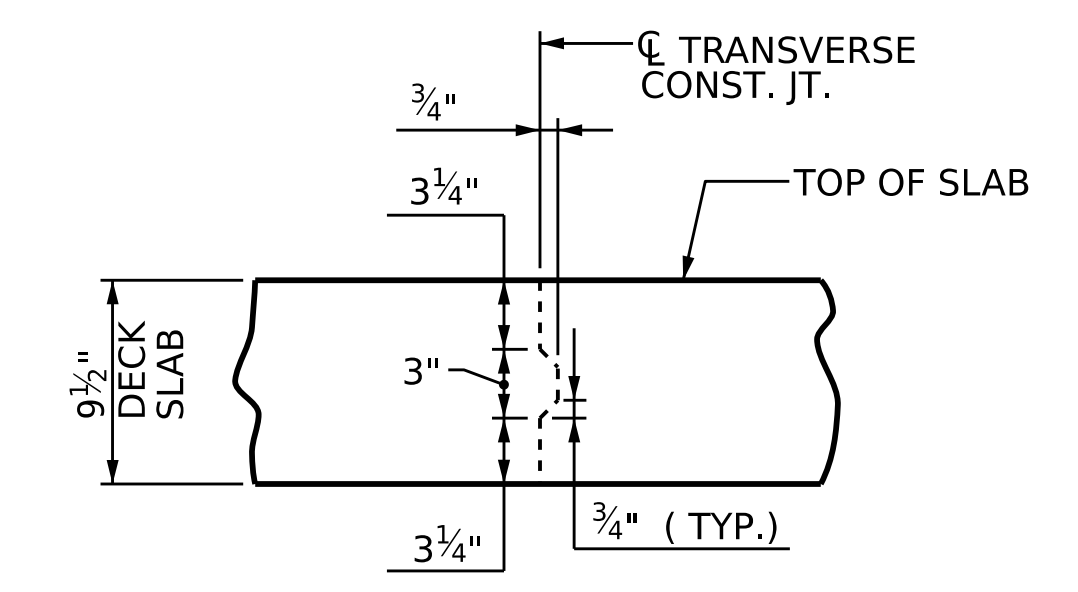
(END BENT 1 SHOWN, END BENT 2 SIMILAR BY ROTATION)
(REINFORCING IN GIRDER NOT SHOWN FOR CLARITY)



PLAN OF GIRDERS AT LINK SLAB BENT

(BENT 1 SHOWN, BENT 2 SIMILAR BY ROTATION)

△ THE TOP OF GIRDER IN THE REGION OF THE LINK SLAB SHALL BE SMOOTH (NOT RAKED) AND FREE OF STIRRUPS, ANCHOR STUDS, DECK FORMWORK ATTACHMENTS, AND OVERHANG FALSEWORK/FORMWORK ATTACHMENTS.



TRANSVERSE CONSTRUCTION JOINT DETAIL

NOTE: REINFORCING STEEL IN SLAB NOT SHOWN. LONGITUDINAL REINFORCING STEEL SHALL BE CONTINUOUS THRU JOINT

PROJECT NO. **BR-0100**
RUTHERFORD COUNTY
STATION: **18+28.00 -L-**

SHEET 2 OF 2
STATE OF NORTH CAROLINA
DEPARTMENT OF TRANSPORTATION
RALEIGH
SUPERSTRUCTURE
TYPICAL SECTION DETAILS

DESIGNED BY:	J. WHEATLEY	DATE :	MAY 2024
DRAWN BY:	M. HOBBS	DATE :	MAY 2024
CHECKED BY:	E. LAWES	DATE :	MAY 2024
DESIGN ENGINEER OF RECORD:	E. LAWES	DATE :	MAY 2024

wsp
WSP USA Inc.
434 FAYETTEVILLE STREET
SUITE 1500
RALEIGH, NC 27601
TEL: 1.919.836.4040
LICENSE NO. F-0165

DOCUMENT NOT CONSIDERED FINAL UNLESS ALL SIGNATURES COMPLETED

STATE OF NORTH CAROLINA
PROFESSIONAL ENGINEER
SEAL 044167
ELIZABETH F. LAWES
12/18/2024

REVISIONS				SHEET NO.
NO.	BY:	DATE:	NO.	DATE:
1			3	
2			4	

S-8
TOTAL SHEETS
30