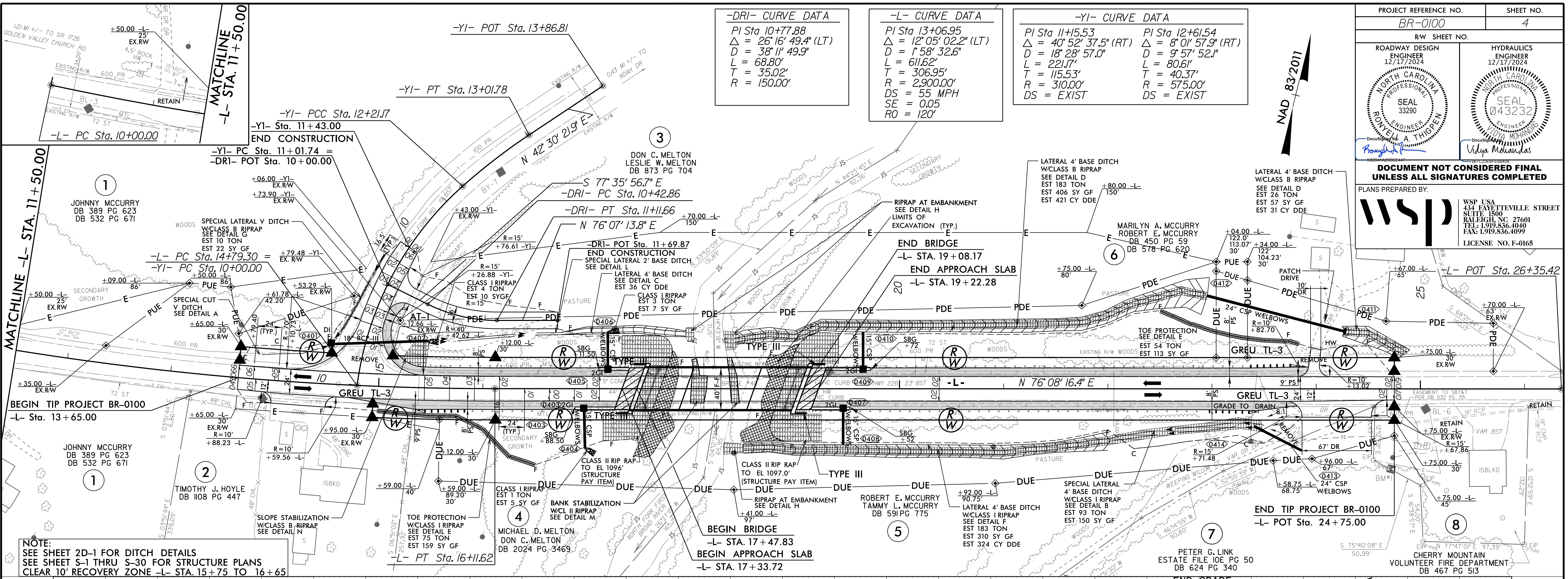
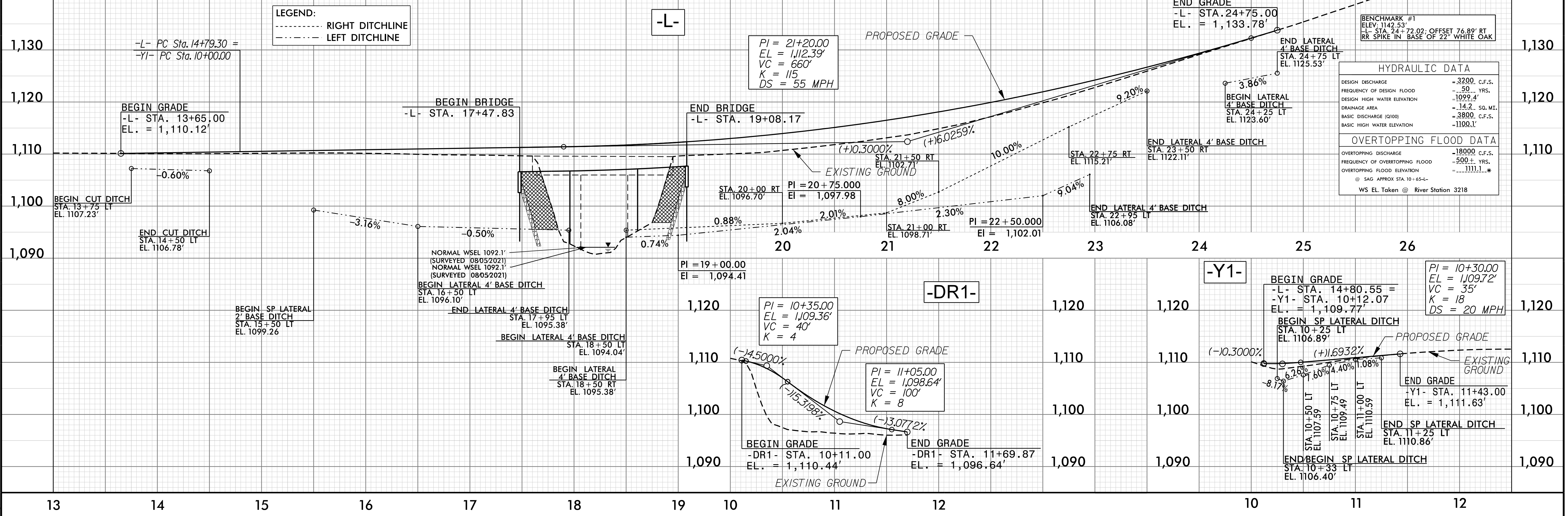


PROJECT REFERENCE NO. BR-0100	SHEET NO. 4
ROADWAY DESIGN ENGINEER 12/17/2024 NORTH CAROLINA PROFESSIONAL SEAL 33290 JON WELLS A. THIGPEN	HYDRAULICS ENGINEER 12/17/2024 NORTH CAROLINA PROFESSIONAL SEAL 043232 Vidya Mohandas
DOCUMENT NOT CONSIDERED FINAL UNLESS ALL SIGNATURES COMPLETED	
PLANS PREPARED BY: WSP USA 434 FAYETTEVILLE STREET SLITTS, 1500 RALEIGH, NC 27601 TEL: 1.919.836.4040 FAX: 1.919.836.4099 LICENSE NO. F-0165	

-DRI- CURVE DATA	-L- CURVE DATA	-Y1- CURVE DATA
PI Sta 10+77.88 $\Delta = 26' 16" 49.4" (LT)$ $D = 38' 11" 49.9"$ $L = 68.80'$ $T = 35.02'$ $R = 150.00'$	PI Sta 13+06.95 $\Delta = 12' 05" 02.2" (LT)$ $D = 1' 58" 32.6"$ $L = 611.62'$ $T = 306.95'$ $R = 2,900.00'$ $DS = 55 MPH$ $SE = 0.05$ $RO = 120'$	PI Sta 11+5.53 $\Delta = 40' 52" 37.5" (RT)$ $D = 18' 28" 57.0"$ $L = 221.17'$ $T = 115.53'$ $R = 310.00'$ $DS = EXIST$
		PI Sta 12+61.54 $\Delta = 8' 01" 57.9" (RT)$ $D = 9' 57" 52.1"$ $L = 80.61'$ $T = 40.37'$ $R = 575.00'$ $DS = EXIST$



NOTE:
SEE SHEET 2D-1 FOR DITCH DETAILS
SEE SHEET S-1 THRU S-30 FOR STRUCTURE PLANS
CLEAR 10' RECOVERY ZONE -L- STA. 15+75 TO 16+65



20-NOV-2024 15:28
\\p04way\p\proj\BR-0100_rdy_Pah04.dgn