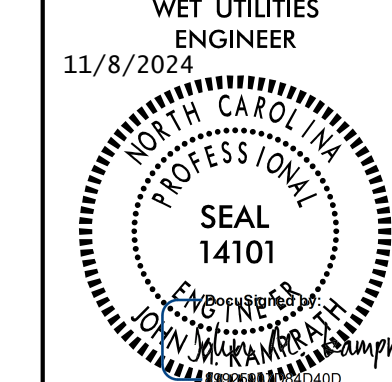



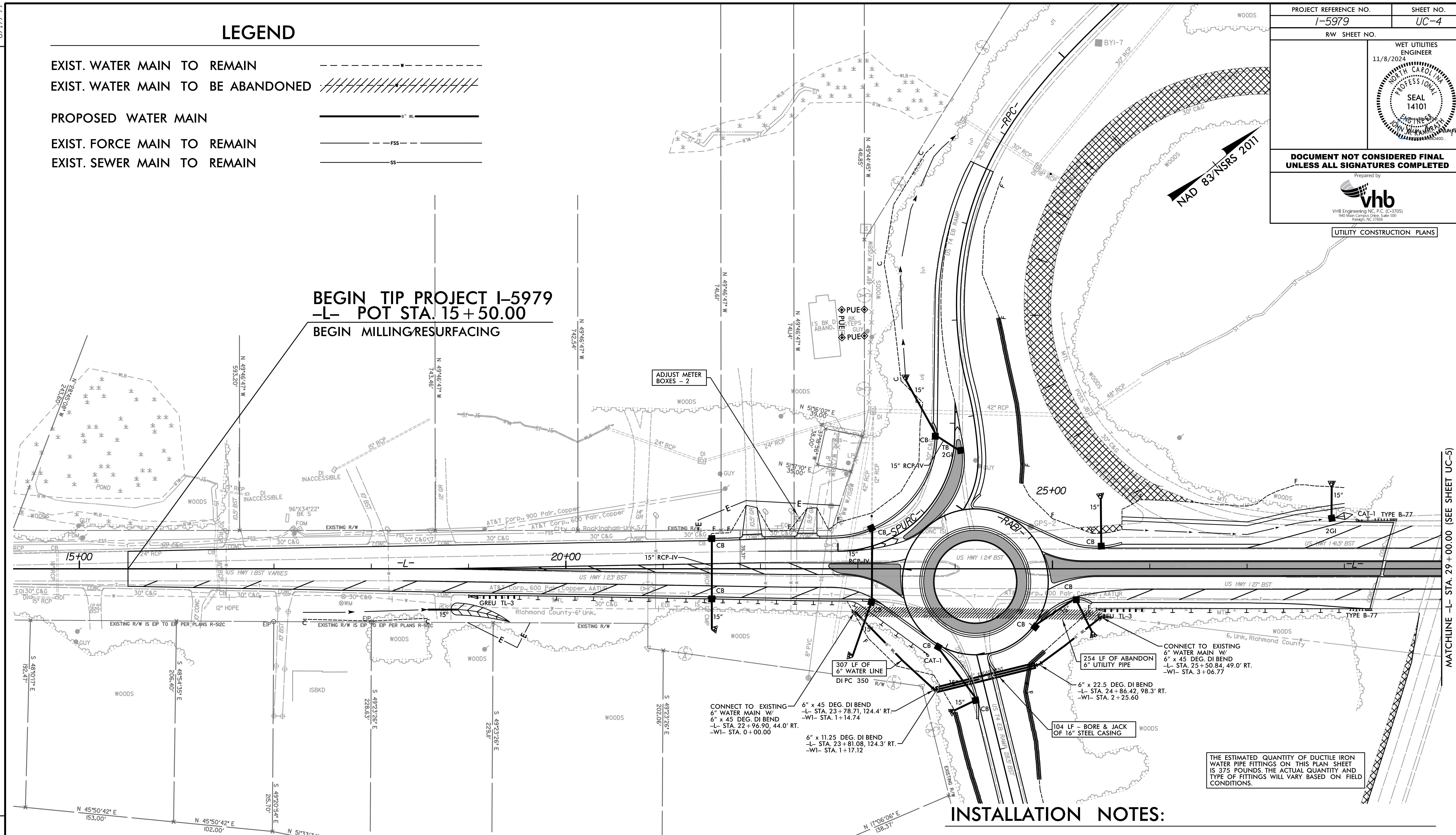
8/17/24

### LEGEND

- EXIST. WATER MAIN TO REMAIN
- EXIST. WATER MAIN TO BE ABANDONED
- PROPOSED WATER MAIN
- EXIST. FORCE MAIN TO REMAIN
- EXIST. SEWER MAIN TO REMAIN

<b>PROJECT REFERENCE NO.</b> I-5979	<b>SHEET NO.</b> UC-4
<b>RW SHEET NO.</b>	
	
<b>DOCUMENT NOT CONSIDERED FINAL UNLESS ALL SIGNATURES COMPLETED</b>	
	
<b>UTILITY CONSTRUCTION PLANS</b>	

**BEGIN TIP PROJECT I-5979**  
**-L- POT STA. 15+50.00**  
**BEGIN MILLING/RESURFACING**



REVISIONS

MATCHLINE -L- STA. 29+00.00 (SEE SHEET UC-5)

- CONNECT TO EXISTING 6" WATER MAIN W/ 6" x 45 DEG. DI BEND  
-L- STA. 22+96.90, 44.0' RT.  
-WI- STA. 0+00.00
- 307 LF OF 6" WATER LINE  
DI PC 350
- 6" x 45 DEG. DI BEND  
-L- STA. 23+91.08, 124.3' RT.  
-WI- STA. 1+17.12
- 6" x 11.25 DEG. DI BEND  
-L- STA. 23+91.08, 124.3' RT.  
-WI- STA. 1+17.12
- 104 LF - BORE & JACK OF 16" STEEL CASING
- 254 LF OF ABANDON 6" UTILITY PIPE
- CONNECT TO EXISTING 6" WATER MAIN W/ 6" x 45 DEG. DI BEND  
-L- STA. 24+86.42, 98.3' RT.  
-WI- STA. 2+25.60
- 6" x 22.5 DEG. DI BEND  
-L- STA. 24+86.42, 98.3' RT.  
-WI- STA. 2+25.60

THE ESTIMATED QUANTITY OF DUCTILE IRON WATER PIPE FITTINGS ON THIS PLAN SHEET IS 375 POUNDS. THE ACTUAL QUANTITY AND TYPE OF FITTINGS WILL VARY BASED ON FIELD CONDITIONS.

### INSTALLATION NOTES:

1. ALL WORK ASSOCIATED WITH THE RELOCATION OF WATER MAINS SHALL BE COMPLETED IN ACCORDANCE WITH THE RICHMOND COUNTY WATER SYSTEM STANDARD SPECIFICATIONS AS WELL AS NCDOT'S STANDARD SPECIFICATIONS FOR ROADS AND STRUCTURES DATED JANUARY 2024.
2. WATER MAINS UP TO 8 INCHES IN DIAMETER SHALL BE INSTALLED WITH A MINIMUM OF 36 INCHES OF COVER. WATER MAINS 10 INCHES IN DIAMETER AND LARGER SHALL BE INSTALLED WITH A MINIMUM OF 42 INCHES OF COVER.
3. WATER MAINS SHALL BE INSTALLED WITH A MINIMUM OF 24 INCHES HORIZONTAL AND 18 INCHES VERTICAL SEPARATION FROM STORM SEWERS AND OTHER DRY UTILITIES.
4. VERIFY ALL ILLUSTRATED UTILITY CROSSINGS PRIOR TO CONSTRUCTION AND NOTIFY THE ENGINEER IF CONFLICTS ARE ENCOUNTERED.
5. CONTRACTOR SHALL COORDINATE UTILITY RELOCATION OR ABANDONMENT WITH LOCAL UTILITY COMPANIES AS REQUIRED.
6. ALL CONNECTIONS TO EXISTING WATER MAINS SHALL BE MADE WITH A THRUST COLLAR IN ACCORDANCE WITH THE DETAILS OF THESE PLANS.

### GENERAL NOTES:

1. EXISTING TOPOGRAPHIC SURVEY AND SUE BY OTHERS. CONTRACTOR TO VERIFY ALL UTILITIES PRIOR TO CONSTRUCTION. CONTRACTOR TO CONFIRM FINAL CONNECTION POINTS IN FIELD.
2. EXISTING WATER MAIN DEPTHS SHOWN ARE APPROXIMATE BASED ON BEST AVAILABLE INFORMATION. ACTUAL DEPTHS ARE TO BE CONFIRMED IN FIELD.
3. EXISTING WATER MAIN MATERIALS SHOWN ARE BASED ON THE BEST AVAILABLE INFORMATION. CONTRACTOR SHALL PROVIDE PROPER PIPE MATERIAL TRANSITION AT ALL CONNECTIONS IN ACCORDANCE WITH THE REQUIREMENTS OF RICHMOND COUNTY.
4. PRIOR TO COMMENCING ANY WORK ON ANY TRENCHLESS INSTALLATION ON THIS PROJECT, PROVIDE A DESIGN FOR THE TRENCHLESS INSTALLATION CERTIFIED BY AN ENGINEER LICENSED IN THE STATE OF NORTH CAROLINA, AS REQUIRED BY SUBARTICLE 1550-3(B) OF THE STANDARD SPECIFICATIONS.

FOR UTILITY PROFILES SEE SHEET UC-7

7/4/24 AM  
 R:\Projects\I-5979\UC-4.dgn  
 mcm