

PROJECT REFERENCE NO.	SHEET NO.
I-5979	EC-06/CONST.06
RW SHEET NO.	HYDRAULICS ENGINEER
ROADWAY DESIGN ENGINEER	

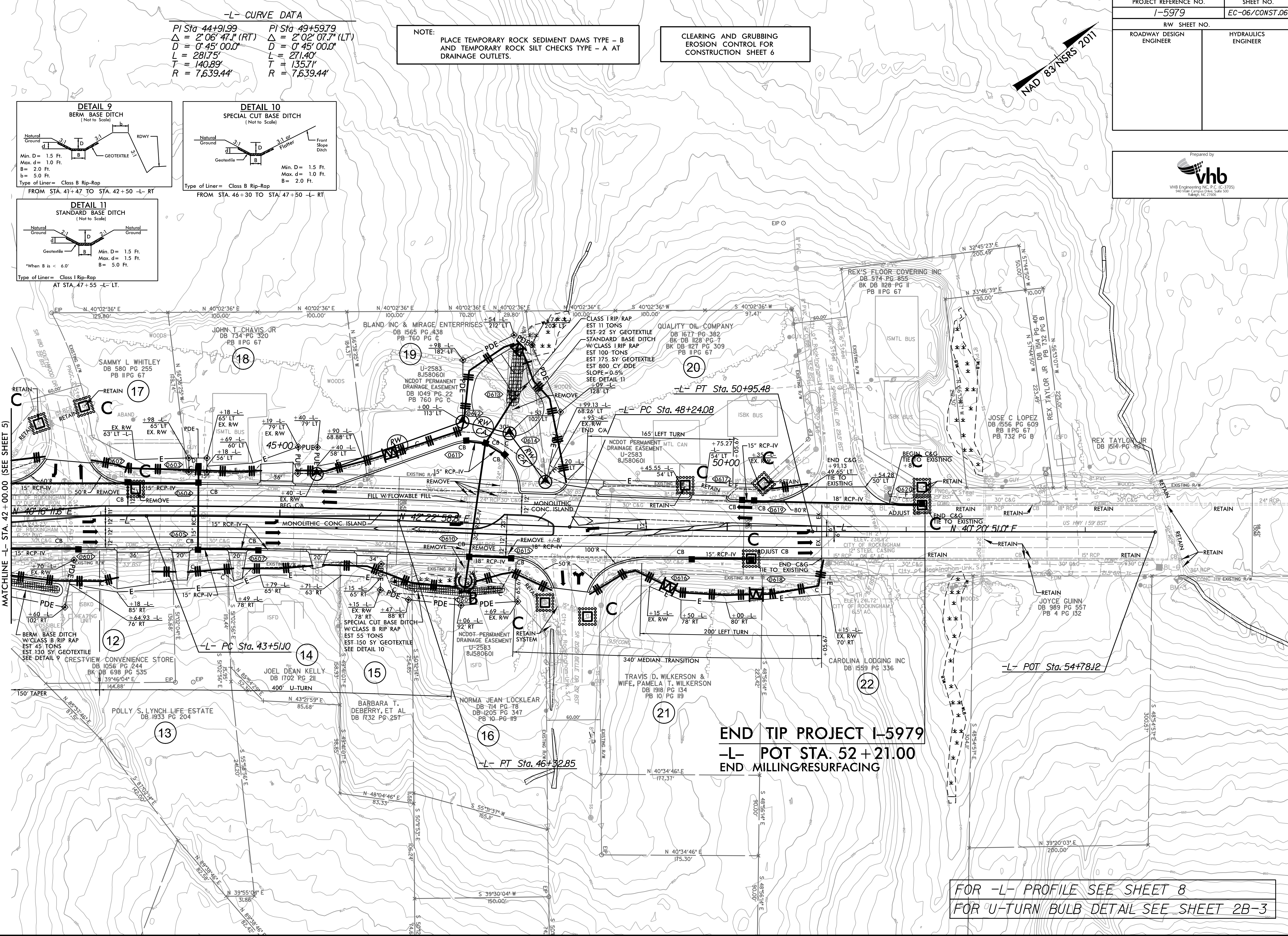
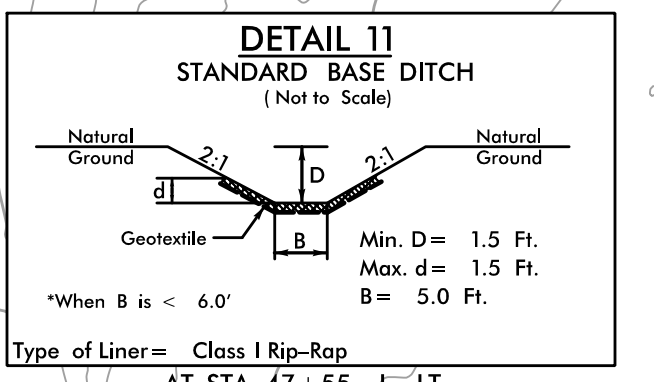
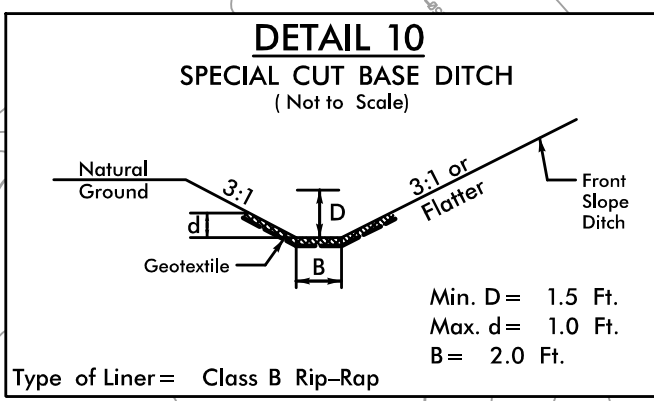
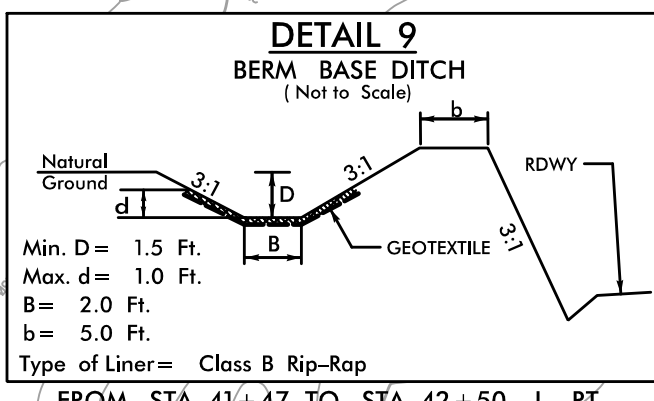


-L- CURVE DATA

PI Sta 44+91.99	PI Sta 49+59.79
$\Delta = 2^{\circ}06'47.1''$ (RT)	$\Delta = 2^{\circ}02'07.7''$ (LT)
$D = 0^{\circ}45'00.0''$	$D = 0^{\circ}45'00.0''$
$L = 281.75'$	$L = 271.40'$
$T = 140.89'$	$T = 135.71'$
$R = 7,639.44'$	$R = 7,639.44'$

NOTE: PLACE TEMPORARY ROCK SEDIMENT DAMS TYPE - B AND TEMPORARY ROCK SILT CHECKS TYPE - A AT DRAINAGE OUTLETS.

CLEARING AND GRUBBING EROSION CONTROL FOR CONSTRUCTION SHEET 6



END TIP PROJECT I-5979
 -L- POT STA. 52+21.00
 END MILLING/RESURFACING

FOR -L- PROFILE SEE SHEET 8
 FOR U-TURN BULB DETAIL SEE SHEET 2B-3

8/17/99
 2:59:59 PM
 R:\Environmental\Design\I5979\REU_EC_psh06_CG.dgn
 10/16/06