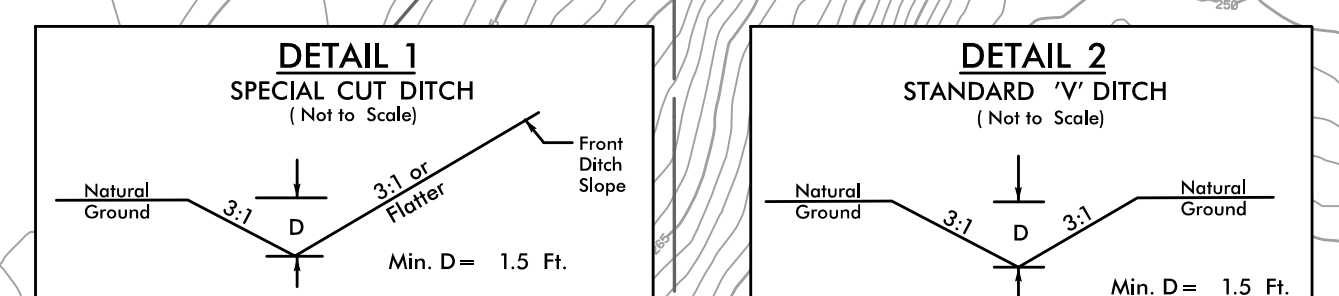
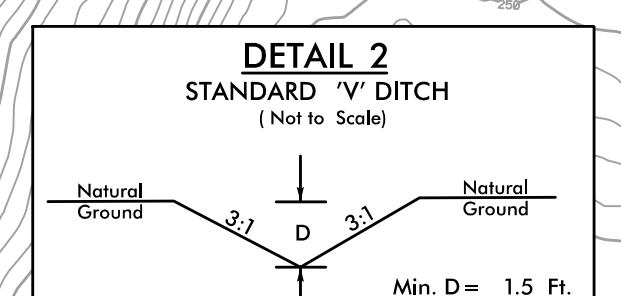


PROJECT REFERENCE NO. 1-5979	SHEET NO. EC-04/CONST.04
RW SHEET NO.	HYDRAULICS ENGINEER
ROADWAY DESIGN ENGINEER	

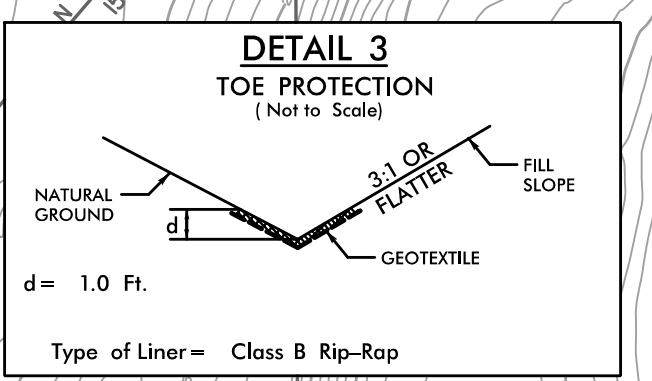
Prepared by  
**vhb**  
VHB Engineering, Inc. P.C. (C-3705)  
960 West Campus Drive, Suite 500  
Raleigh, NC 27606



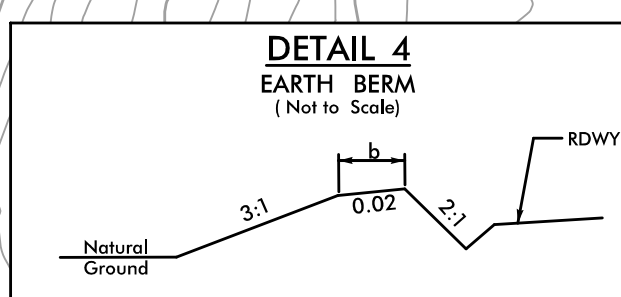
FROM STA. 17+30 TO STA. 18+59 -L- RT  
FROM STA. 11+50 TO STA. 13+77 -RPC- LT



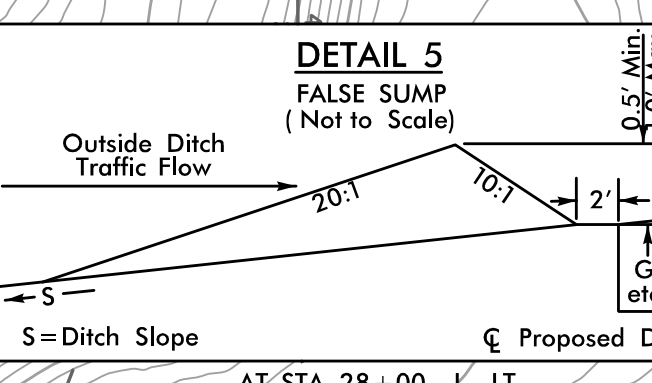
FROM STA. 18+89 TO STA. 19+42 -L- RT



FROM STA. 10+13 TO STA. 11+40 -RPD- LT  
FROM STA. 10+50 TO STA. 11+63 -RPD- RT  
FROM STA. 10+38 TO STA. 12+00 -RPC- RT



FROM STA. 25+71 TO STA. 28+00 -L- LT

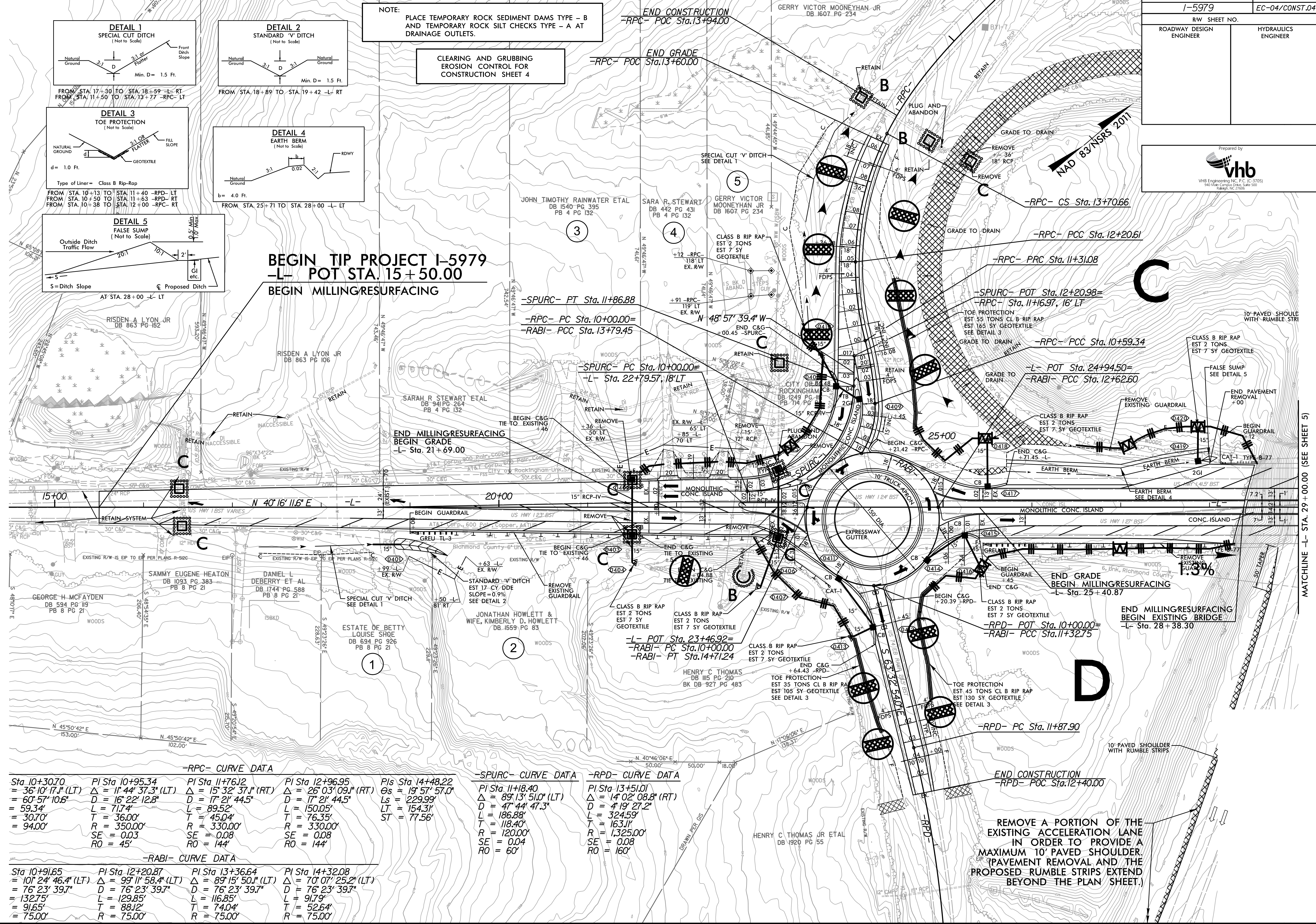


AT STA. 28+00 -L- LT

NOTE: PLACE TEMPORARY ROCK SEDIMENT DAMS TYPE - B AND TEMPORARY ROCK SILT CHECKS TYPE - A AT DRAINAGE OUTLETS.

CLEARING AND GRUBBING EROSION CONTROL FOR CONSTRUCTION SHEET 4

BEGIN TIP PROJECT I-5979  
-L- POT STA. 15+50.00  
BEGIN MILLING/RESURFACING



-RPC- CURVE DATA			
Sta 10+30.70	PI Sta 10+95.34	PI Sta 11+76.12	PI Sta 12+96.95
= 36° 10' 17.1" (LT)	Δ = 11° 44' 37.3" (LT)	Δ = 15° 32' 37.1" (RT)	Δ = 26° 03' 09.1" (RT)
= 60° 57' 10.6"	D = 16° 22' 12.8"	D = 17° 21' 44.5"	D = 17° 21' 44.5"
= 59.34'	L = 71.74'	L = 89.52'	L = 150.05'
= 30.70'	T = 36.00'	T = 45.04'	T = 76.35'
= 94.00'	R = 350.00'	R = 330.00'	R = 330.00'
	SE = 0.03	SE = 0.08	SE = 0.08
	RO = 45'	RO = 144'	RO = 144'

-RABI- CURVE DATA			
Sta 10+91.65	PI Sta 12+20.87	PI Sta 13+36.64	PI Sta 14+32.08
= 101° 24' 46.4" (LT)	Δ = 99° 11' 58.4" (LT)	Δ = 89° 15' 50.1" (LT)	Δ = 70° 07' 25.2" (LT)
= 76° 23' 39.7"	D = 76° 23' 39.7"	D = 76° 23' 39.7"	D = 76° 23' 39.7"
= 132.75'	L = 129.85'	L = 116.85'	L = 91.79'
= 91.65'	T = 88.12'	T = 74.04'	T = 52.64'
= 75.00'	R = 75.00'	R = 75.00'	R = 75.00'

-SPURC- CURVE DATA			
PI Sta 11+8.40	PI Sta 13+51.01	PI Sta 14+48.22	PI Sta 15+50.00
Δ = 89° 13' 51.0" (LT)	Δ = 14° 02' 08.8" (RT)	Δ = 19° 57' 57.0" (RT)	Δ = 17° 21' 44.5" (RT)
D = 47° 44' 47.3"	D = 4° 19' 27.2"	D = 154.31'	D = 154.31'
L = 186.88'	L = 324.59'	L = 154.31'	L = 154.31'
T = 118.40'	T = 163.11'	T = 77.56'	T = 77.56'
R = 120.00'	R = 1,325.00'	R = 330.00'	R = 330.00'
SE = 0.04	SE = 0.08	SE = 0.08	SE = 0.08
RO = 60'	RO = 160'	RO = 144'	RO = 144'