

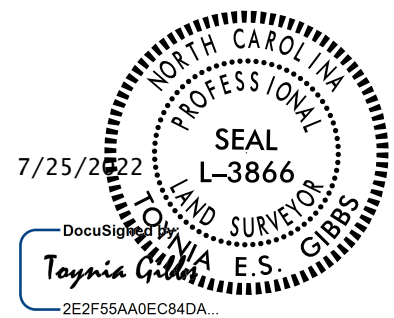
6/2/2019

I, Toynia E.S. Gibbs, PLS, certify that the right of way and permanent easement monumentation for this project shown herein was completed under my direct and responsible charge from an actual survey made under my supervision; that all horizontal closures had a minimum ratio of precision of 1:10,000 (Class A). Field work was performed from June 2022 to July 2022, and all coordinates are based on NAD83/2011; That this survey was performed to meet the requirements of 21NCAC 56.1600 as applicable.

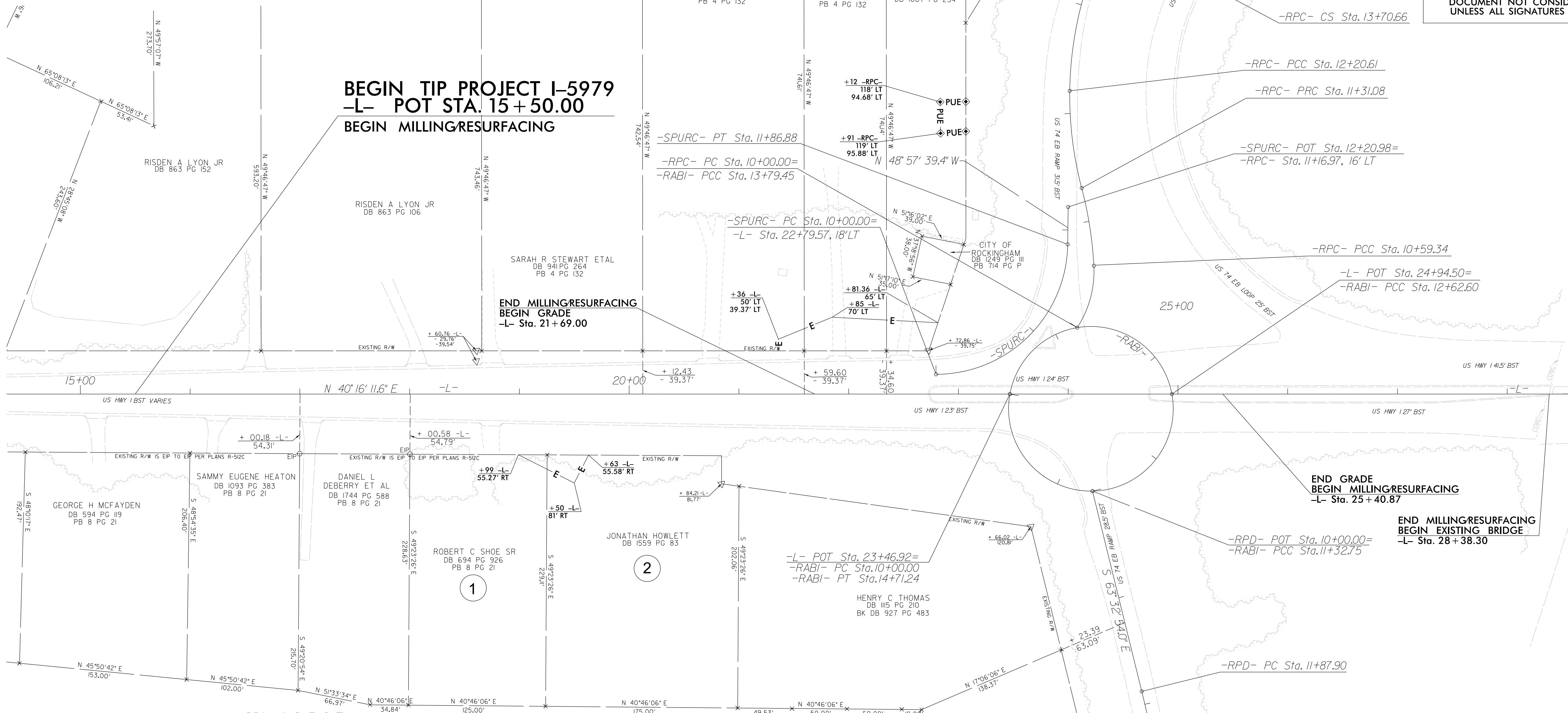
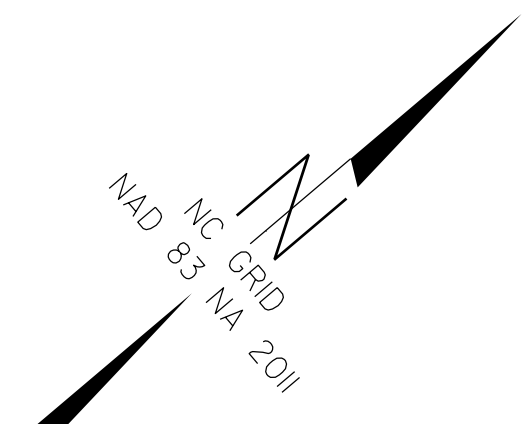
7/25/2022

Witness my original signature and seal this day _____

DocuSigned by:
Toynia Gibbs
2E2F55AA06C84DA
Professional Land Surveyor L-3866



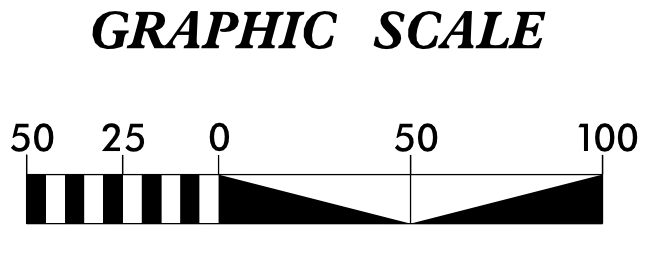
PROJECT REFERENCE NO.	SHEET NO.
I-5979	RW-04
Location and Surveys	
ESP ASSOCIATES, INC 2200 GATEWAY CENTRE BLVD., SUITE 216 MORRISVILLE, NC 27560 LICENSE NO. F-1407	
PROJECT SURVEYOR	
DOCUMENT NOT CONSIDERED FINAL UNLESS ALL SIGNATURES COMPLETED	



-RPC- CURVE DATA				
PI Sta 10+30.70	PI Sta 10+95.34	PI Sta 11+76.12	PI Sta 12+96.95	PIs Sta 14+48.22
$\Delta = 36^{\circ} 10' 17.1''$ (LT)	$\Delta = 11^{\circ} 44' 37.3''$ (LT)	$\Delta = 15^{\circ} 32' 37.1''$ (RT)	$\Delta = 26^{\circ} 03' 09.1''$ (RT)	$\Delta s = 19^{\circ} 57' 57.0''$
D = 60' 57' 10.6"	D = 16' 22' 12.8"	D = 17' 21' 44.5"	D = 17' 21' 44.5"	Ls = 229.99'
L = 59.34'	L = 71.74'	L = 89.52'	L = 150.05'	LT = 154.31'
T = 30.70'	T = 36.00'	T = 45.04'	T = 76.35'	ST = 77.56'
R = 94.00'	R = 350.00'	R = 330.00'	R = 330.00'	
	SE = 0.03	SE = 0.08	SE = 0.08	
	RO = 45'	RO = 144'	RO = 144'	

-SPURC- CURVE DATA		-RPD- CURVE DATA	
PI Sta 11+8.40	PI Sta 13+51.01	PI Sta 11+8.40	PI Sta 13+51.01
$\Delta = 89^{\circ} 13' 51.0''$ (LT)	$\Delta = 14^{\circ} 02' 08.8''$ (RT)	$\Delta = 89^{\circ} 13' 51.0''$ (LT)	$\Delta = 14^{\circ} 02' 08.8''$ (RT)
D = 47' 44' 47.3"	D = 4' 19' 27.2"	D = 47' 44' 47.3"	D = 4' 19' 27.2"
L = 186.88'	L = 324.59'	L = 186.88'	L = 324.59'
T = 118.40'	T = 163.11'	T = 118.40'	T = 163.11'
R = 120.00'	R = 1,325.00'	R = 120.00'	R = 1,325.00'
SE = 0.04	SE = 0.08	SE = 0.04	SE = 0.08
RO = 60'	RO = 160'	RO = 60'	RO = 160'

-RABI- CURVE DATA			
PI Sta 10+91.65	PI Sta 12+20.87	PI Sta 13+36.64	PI Sta 14+32.08
$\Delta = 101^{\circ} 24' 46.4''$ (LT)	$\Delta = 99^{\circ} 11' 58.4''$ (LT)	$\Delta = 89^{\circ} 15' 50.1''$ (LT)	$\Delta = 70^{\circ} 07' 25.2''$ (LT)
D = 76' 23' 39.7"	D = 76' 23' 39.7"	D = 76' 23' 39.7"	D = 76' 23' 39.7"
L = 132.75'	L = 129.85'	L = 116.85'	L = 91.79'
T = 91.65'	T = 88.12'	T = 74.04'	T = 52.64'
R = 75.00'	R = 75.00'	R = 75.00'	R = 75.00'



NOTES:

1. IF FURTHER INFORMATION REGARDING PROJECT CONTROL IS NEEDED PLEASE CONTACT THE LOCATION AND SURVEYS UNIT.
2. PROJECT CONTROL WAS ESTABLISHED USING GNSS, THE GLOBAL NAVIGATION SATELLITE SYSTEM.
3. RIGHT OF WAY MONUMENTATION ESTABLISHED JUNE 2022 TO JULY 2022 .

REVISIONS

MATCHLINE -L- STA. 29+00.00 (SEE SHEET 5)