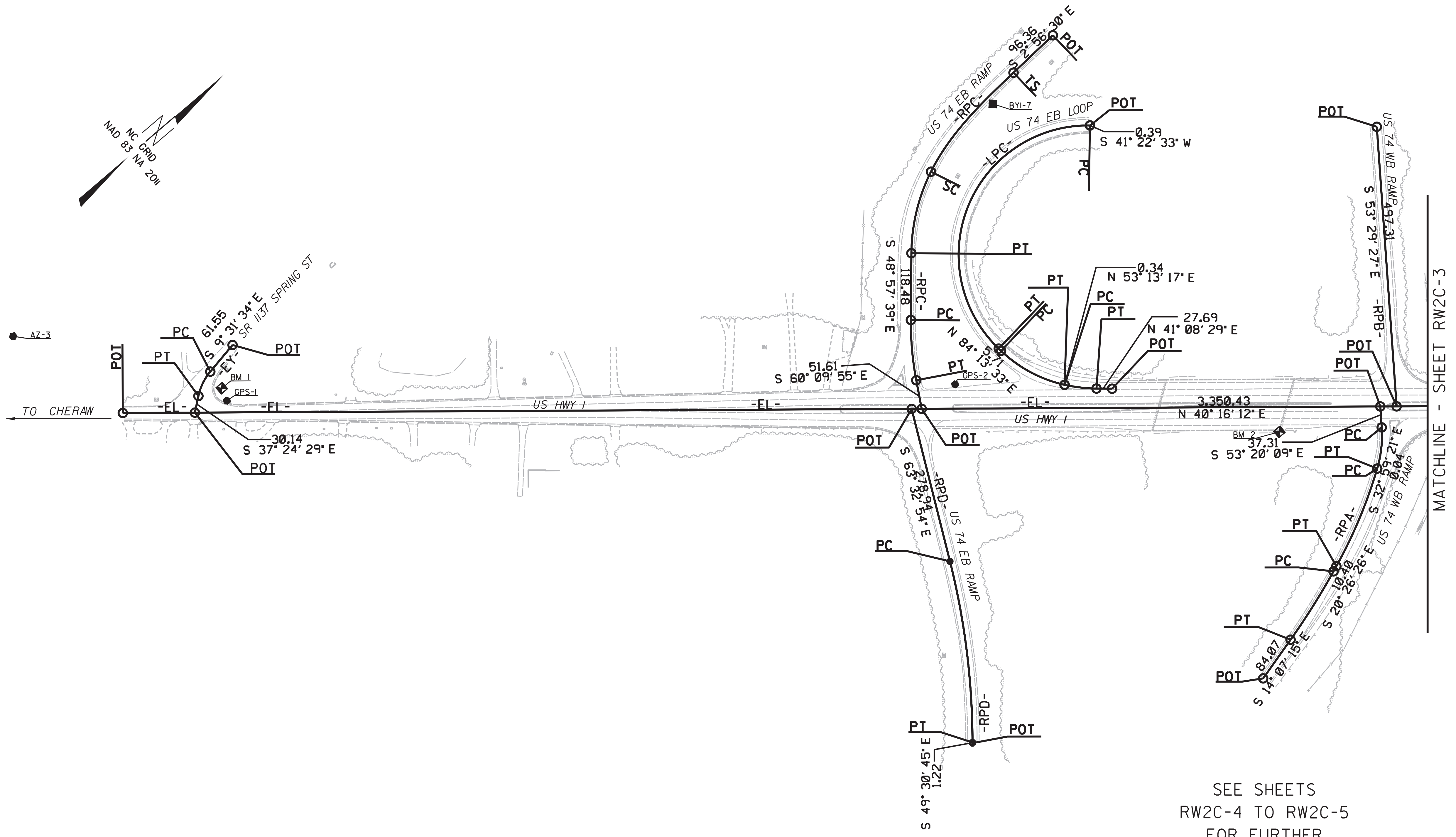


PROJECT REFERENCE NO.	SHEET NO.
I-5979	RW2C-2
Location and Surveys	
ESP ASSOCIATES, INC P.O. BOX 7030 CHARLOTTE, NC 28241	

# SURVEY CONTROL SHEET

W/ EXISTING CENTERLINE ALIGNMENTS PRIOR TO CONSTRUCTION



SEE SHEETS  
RW2C-4 TO RW2C-5  
FOR FURTHER  
ALIGNMENT DETAILS

**NOTES:**

1. PROJECT CONTROL WAS ESTABLISHED USING GNSS, THE GLOBAL NAVIGATION SATELLITE SYSTEM.
2. THE SURVEY CONTROL DATA FOR THIS PROJECT HAS BEEN COMPILED FROM VARIOUS SOURCES. IF FURTHER INFORMATION REGARDING PROJECT CONTROL IS NEEDED, PLEASE CONTACT THE LOCATION AND SURVEYS UNIT.

REVISIONS

6/2/99

D:\S\F\2018\_12\08\_1979\_esp\esp\Working\Survey Control Sheets\I5979\_1s\_rw2c-502.dgn  
12/20/18 10:52:04 AM