

09,08/99  
 20-NOV-2024 12:54  
 S:\DC\District 2\Iredell\I-5919\177 MM 53 to 57\Maps\_Typs\_Details\I-5919 CADD Files\I-5918\_Rdy\_tsh\_maps.dgn  
 \$\$\$USERNAME\$\$\$

**TIP PROJECT: I-5919**

**C204989**

See Sheet 1A for Index of Sheets

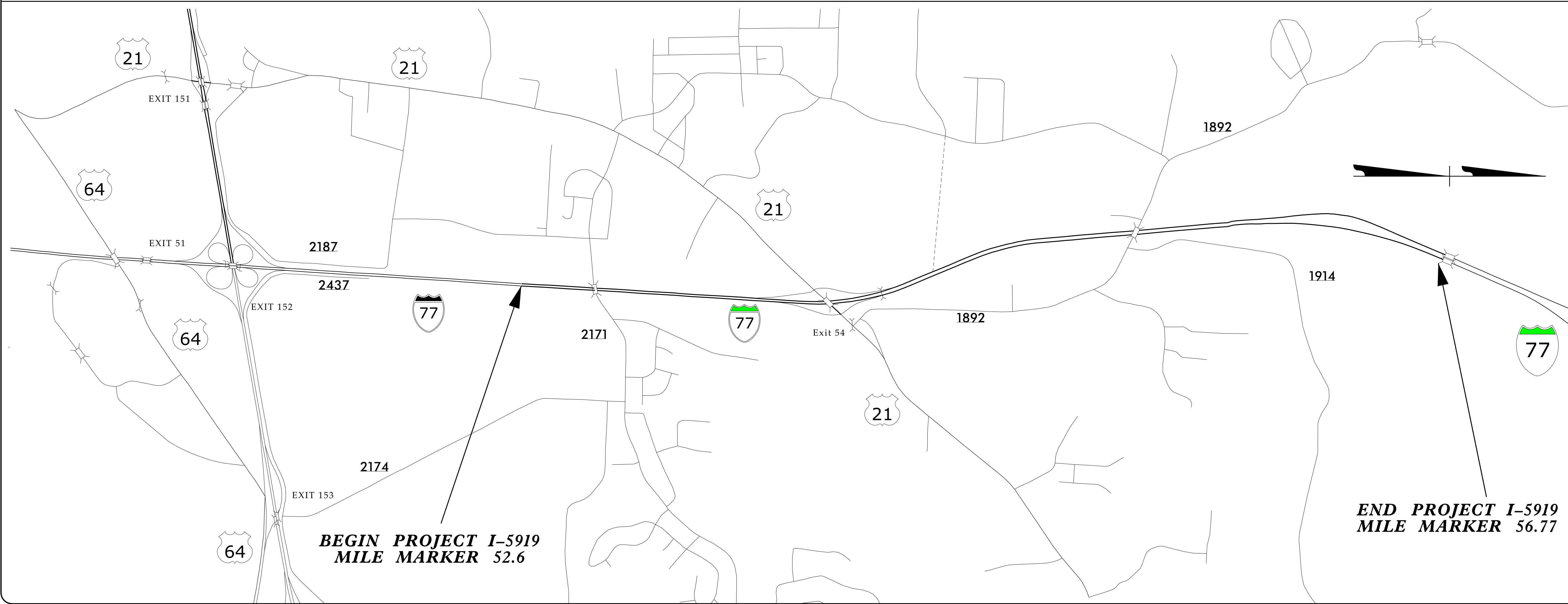
STATE OF NORTH CAROLINA  
 DIVISION OF HIGHWAYS

**IREDELL COUNTY**

**LOCATION: I-77 FROM MM 52.6 (I-3819 PROJ. LIMITS) TO MM. 56.77  
 (S. YADKIN RVR. BRIDGE) INCLUDING RAMPS.**

**WORK TYPE: PAVEMENT REHABILITATION, GUARDRAIL,  
 MILLING, SHOULDER RECONSTRUCTION.**

STATE	STATE PROJECT REFERENCE NO.	SHEET NO.	TOTAL SHEETS
N.C.	I-5919	1	
STATE PROJ. NO.	F.A. PROJ. NO.	DESCRIPTION	
45926.1.2		PE	
45926.3.1	4592601	CONST.	



**PROJECT LENGTH**

LENGTH ROADWAY TIP PROJECT I-5919 = 4.17 MI

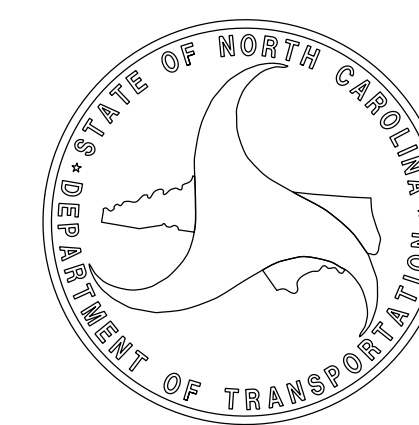
Prepared In the Office of:  
**DIVISION OF HIGHWAYS**  
 1710 EAST MARION ST., SHELBY NC 28151

2024 STANDARD SPECIFICATIONS

**LETTING DATE:**  
 FEBRUARY 18, 2025

**JASON WILLIS**  
 DIVISION MAINTENANCE ENGINEER

**BRYAN SOWELL, PE**  
 PROJECT DESIGN ENGINEER



EFF. 01-16-2024  
REV.

SHEET NUMBER	SHEET
1	TITLE SHEET
1A	INDEX OF SHEETS, GENERAL NOTES, AND STANDARD DRAWINGS
1B THRU 1C	MAPS
2A-1 THRU 2A-3	PAVEMENT SCHEDULE AND TYPICAL SECTIONS
2B-1 THRU 2B-3	ROADWAY DETAILS
2C-1	DETAILS IN LIEU OF STANDARDS
3B-1 THRU 3B-2	GUARDRAIL SUMMARY
3B-3 THRU 3B-6	SUMMARY OF QUANTITIES

GENERAL NOTES:

GUARDRAIL:  
 -RETAIN ALL EXISTING APPROACH GUARDRAIL END UNITS UNLESS DAMAGED OR AS OTHERWISE DIRECTED BY THE ENGINEER.  
 -REPLACE ALL DAMAGED TRAILING GUARDRAIL END UNITS (CAT-1).  
 -REMOVE AND REPLACE ALL GUARDRAIL ON THIS PROJECT IN ACCORDANCE WITH SECTION 862 OF THE STANDARD DRAWINGS.

THE FOLLOWING PAY ITEMS HAVE BEEN INCLUDED FOR MAINTENANCE OF EXISTING GUARDRAIL AND CABLE GUIDERAIL DURING THE PROJECT.  
 -GUARDRAIL END UNITS, TYPE TL-3  
 -GUARDRAIL END UNIT, TYPE CAT-1  
 -GUARDRAIL ANCHOR UNIT, TYPE TYPE III  
 -STEEL BEAM GUARDRAIL  
 -ADDITIONAL GUARDRAIL POSTS  
 -CABLE GUIDERAIL REPAIR  
 -CABLE GUIDERAIL ANCHOR UNIT

2024 SPECIFICATIONS

2024 ROADWAY ENGLISH STANDARD DRAWINGS

The following Roadway Standards as appear in "Roadway Standard Drawings" Contracts Standards and Development Unit - N. C. Department of Transportation - Raleigh, N. C., Dated January 16, 2024 are applicable to this project and by reference hereby are considered a part of these plans:

STD. NO.	TITLE
DIVISION 6 - ASPHALT BASES AND PAVEMENTS	
610.03	Guide for Paving Shoulders Under Bridges - Method III
665.01	Asphalt Shoulders - Milled Rumble Strips
665.02	Limits for Asphalt Shoulders - Milled Rumble Strips
DIVISION 8 - INCIDENTALS	
862.01	Guardrail Placement (Use Details in Lieu of Standards for Sheets 4, 6, 12, and 14 of 15)
862.02	Guardrail Installation
862.03	Structure Anchor Units (Use Detail in Lieu of Standard for Sheet 8 of 9)

DIVISION 11 - WORK ZONE TRAFFIC CONTROL

1101.02	TEMPORARY LANE CLOSURES
1101.11	TRAFFIC CONTROL DESIGN TABLES
1110.01	STATIONARY WORK ZONE SIGNS
1110.02	PORTABLE WORK ZONE SIGNS
1115.01	FLASHING ARROW BOARDS
1130.01	DRUMS
1135.01	CONES
1165.01	TRUCK MOUNTED ATTENUATORS
1180.01	SKINNY DRUMS

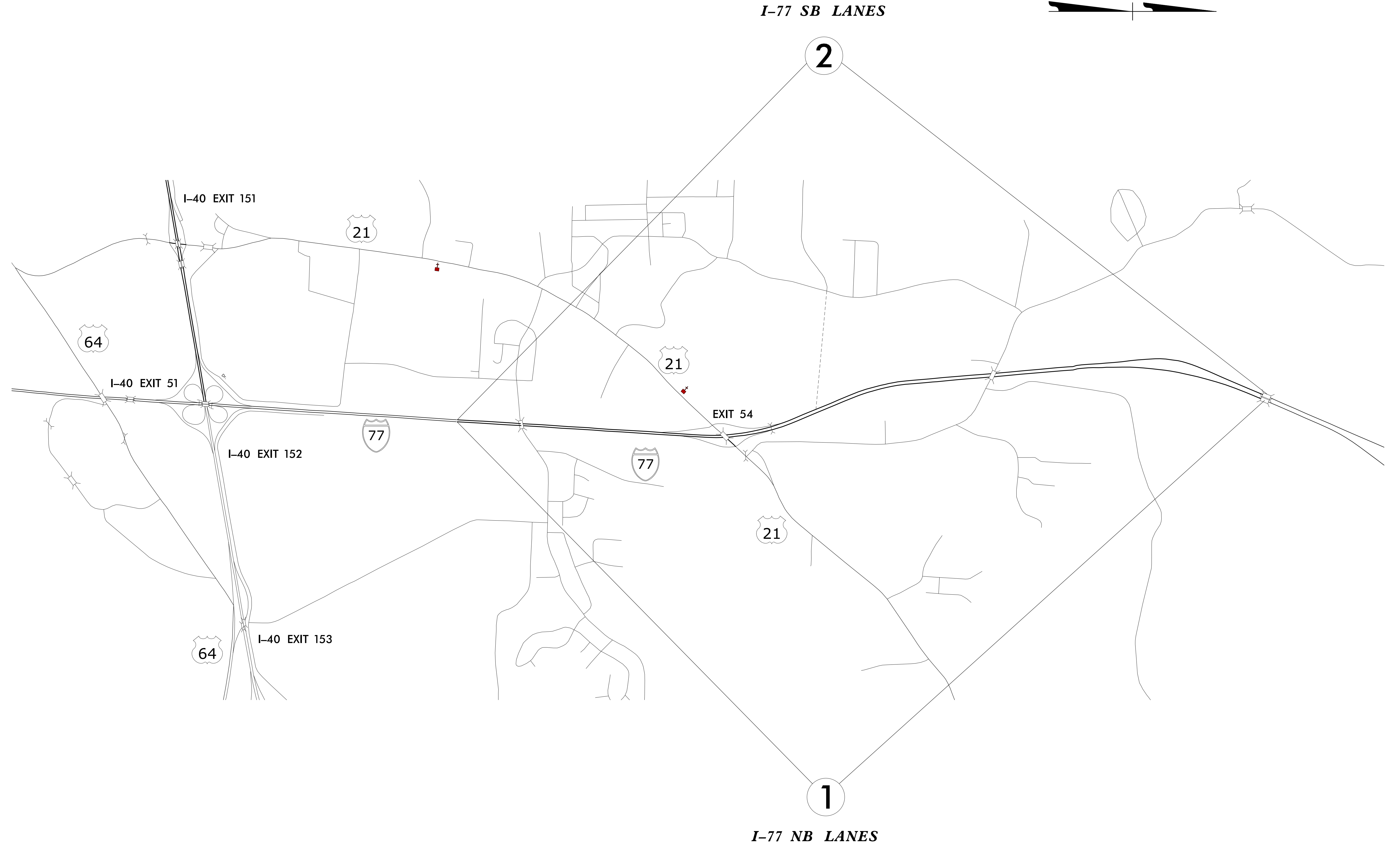
DIVISION 12 - PAVEMENT MARKINGS & MARKERS

1205.01	PAVEMENT MARKINGS - LINE TYPES AND OFFSETS
1205.02	PAVEMENT MARKINGS - TWO LANE AND MULTILANE ROADWAYS
1205.03	PAVEMENT MARKINGS - EXITS AND ENTRANCE RAMP
1205.04	PAVEMENT MARKINGS - INTERSECTIONS
1205.05	PAVEMENT MARKINGS - TURN LANES
1205.06	PAVEMENT MARKINGS - LANE DROPS
1205.08	PAVEMENT MARKINGS - SYMBOLS AND WORD MESSAGES
1205.09	PAVEMENT MARKINGS - PAINTED ISLANDS
1261.01	GUARDRAIL AND BARRIER DELINEATORS - INSTALLATION SPACING
1261.02	GUARDRAIL AND BARRIER DELINEATORS - TYPES AND MOUNTING
1262.01	GUARDRAIL END DELINEATION

**IREDELL COUNTY**

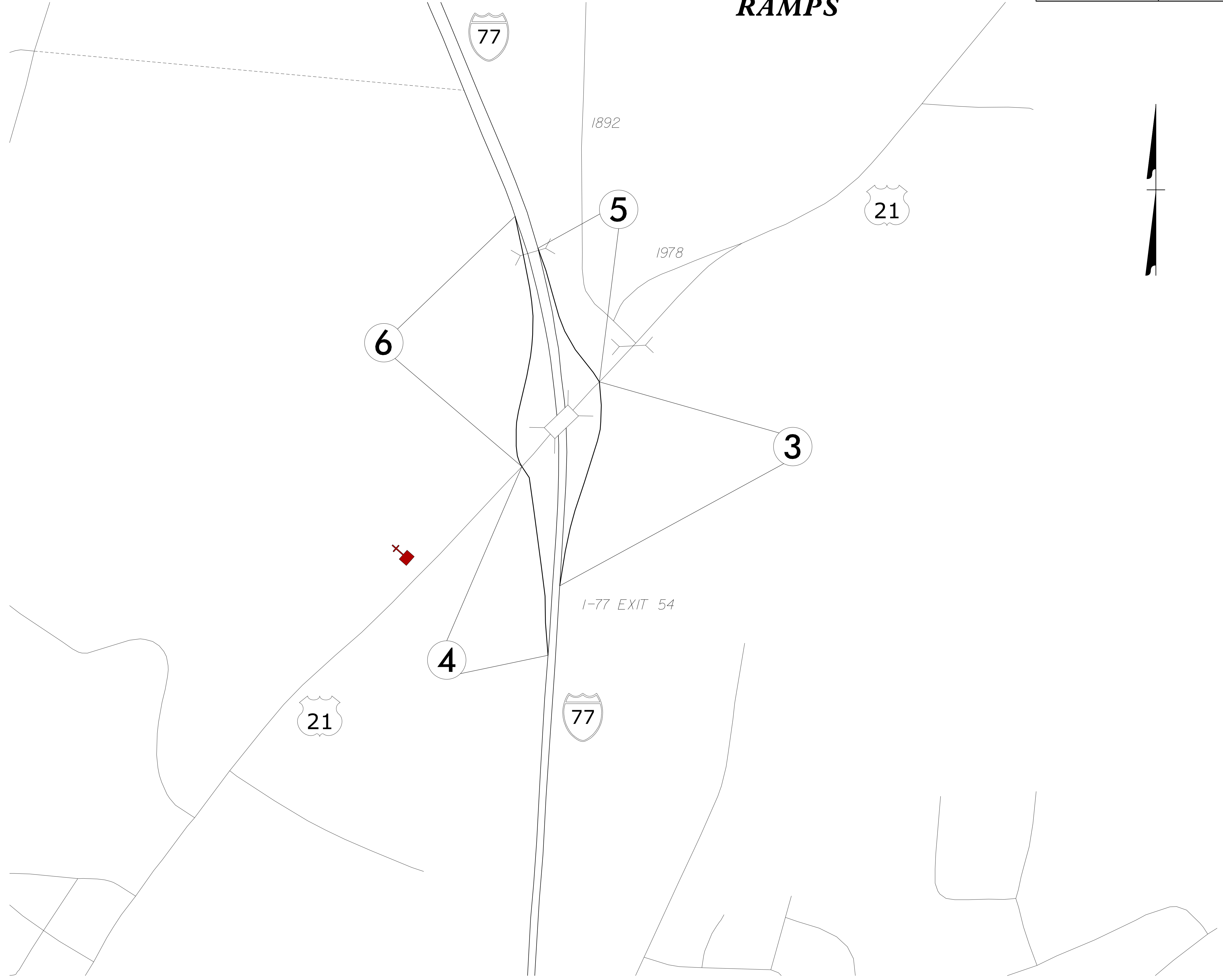
**45926.3.1**

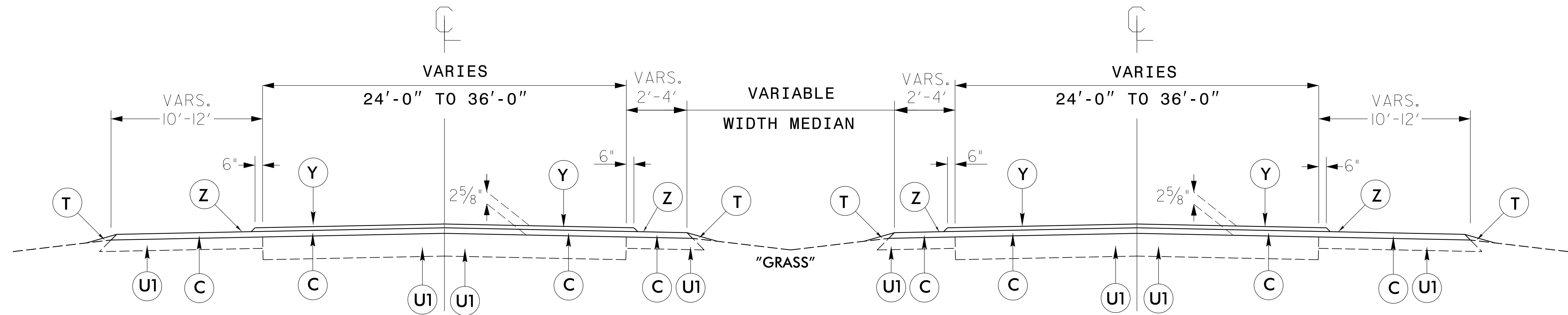
08-NOV-2024 16:42  
S:\DOK\_01\157157\Iredell\I-5919\177 MM 53 to 57\Maps\_Trips\Iredell\I-5919\I-5918\_Rdy\_teh\_maps.dgn  
USER:ME



PROJECT REFERENCE NO.	SHEET NO.
I-5919	I-C

**RAMPS**



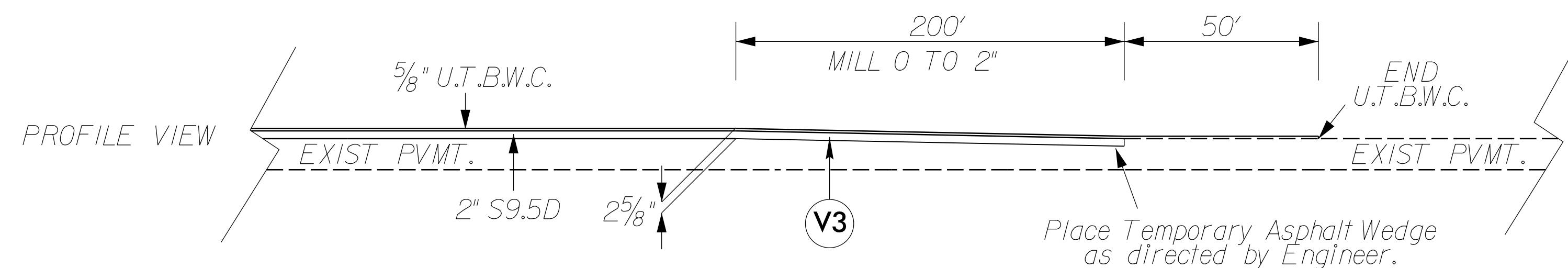


### TYPICAL SECTION NO. 1

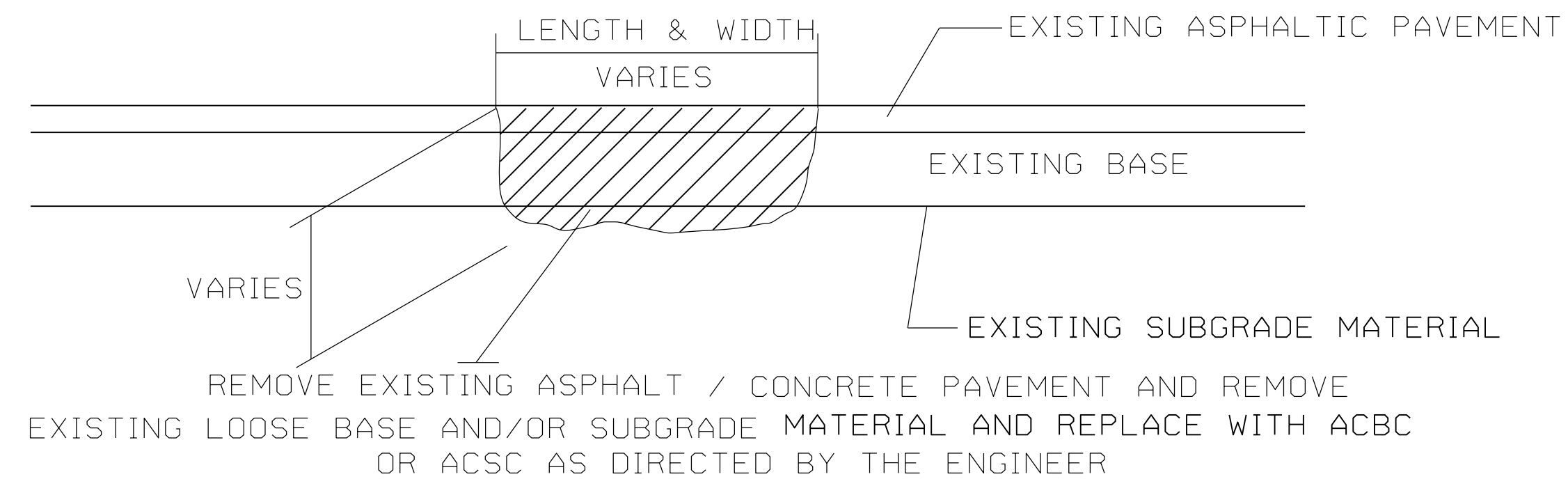
MAP 1 - FROM MM 53.74 TO MM 56.77  
 MAP 2 - FROM MM 53.74 TO MM 56.77

**\*NOTES FOR ALL TYPICALS:**

-SEE BRIDGE APPROACH AND DEPARTURE DETAIL FOR PAVEMENT TRANSITIONS AT BRIDGE UNDERPASSES & OVERPASSES.



### TIE-IN DETAIL AT MM 52.60 NB & SB



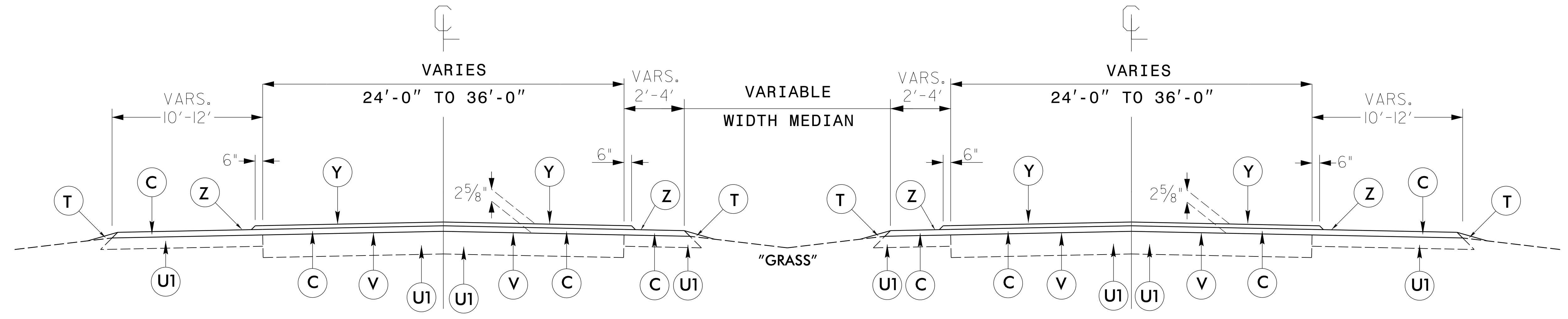
### PATCHING EXISTING ASPHALT PAVEMENT DETAIL

PAVEMENT SCHEDULE	
C	PROP. APPROX. 2" ASPHALT CONCRETE SURFACE COURSE, TYPE S9.5D, AT AN AVERAGE RATE OF 224 LBS. PER SQ. YD.
T	SHOULDER RECONSTRUCTION / AGGREGATE SHOULDER BORROW
U	EXISTING CONCRETE PAVEMENT.
U1	EXISTING ASPHALT PAVEMENT.
V	MILL ASPHALT PAVEMENT APPROX. 5/8" DEPTH
V1	MILL ASPHALT PAVEMENT APPROX 2" DEPTH
V2	MILL ASPHALT PAVEMENT APPROX 0 to 2" DEPTH
V3	INCIDENTAL MILLING
Y	PROP. APPROX. 5/8" ULTRA-THIN BONDED WEARING COURSE, AT AN AVERAGE RATE OF 70 LBS. PER SQ. YD. PER 5/8" DEPTH
Z	MILLED RUMBLE STRIPS

NOTE: PAVEMENT EDGE SLOPES ARE 1:1 UNLESS SHOWN OTHERWISE.

5/14/99  
 08-NOV-2024 09:34  
 \Users\lbrsowe\1\Desktop\I-5919\_RDY\_TYPS\101723.dgn

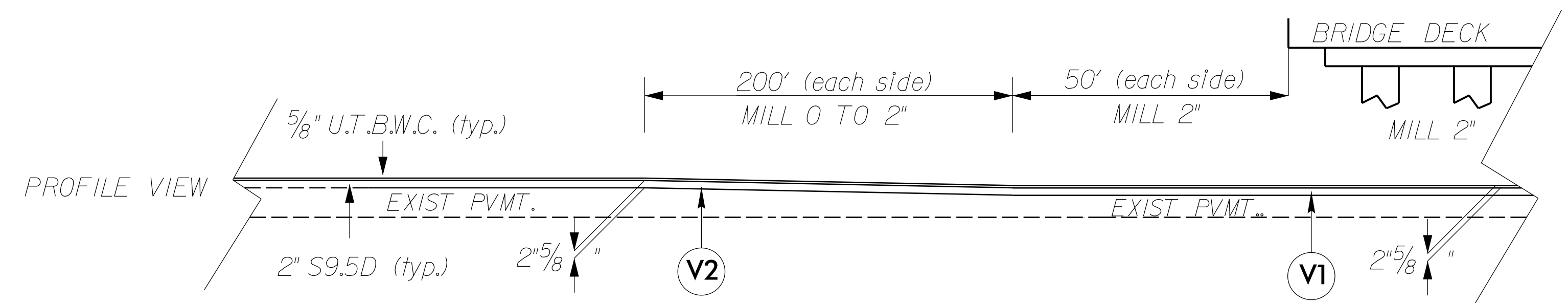




### TYPICAL SECTION NO. 2

MAP 1 - FROM MM 52.60 TO MM 53.74  
 MAP 2 - FROM MM 52.60 TO MM 53.74

## Bridge Underpass Approach And Departure Detail



USE DETAIL AT THE FOLLOWING LOCATIONS IN CONJUNCTION WITH TYPICAL NO. 1 & NO. 2  
 AT THE FOLLOWING UNDERPASS BRIDGES:

- BRIDGE #071 - US 21 (NB LANES ONLY)
- BRIDGE #190 - SR 1892 (NB & SB LANES)

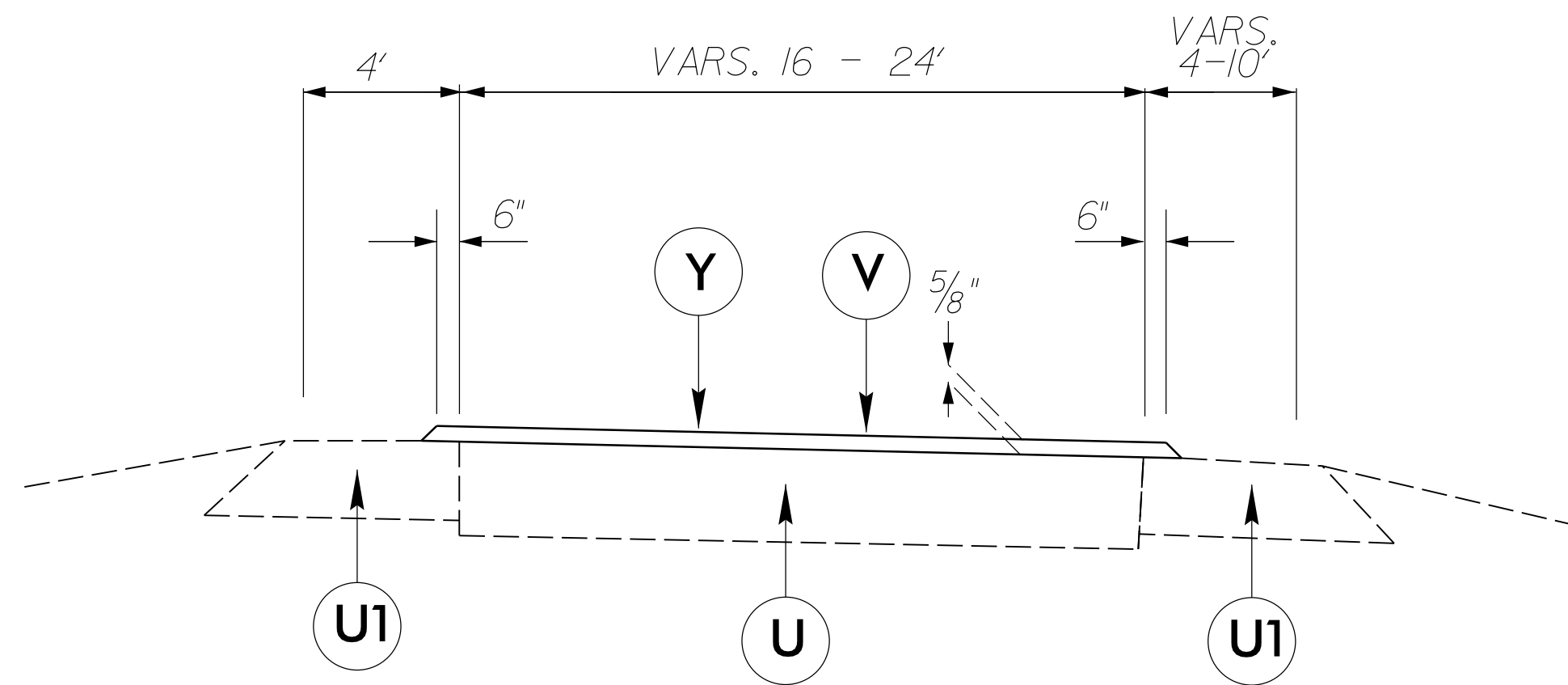
**\*\*Note:** Existing verticle clearances shall not be reduced at these locations.

PAVEMENT SCHEDULE	
C	PROP. APPROX. 2" ASPHALT CONCRETE SURFACE COURSE, TYPE S9.5D, AT AN AVERAGE RATE OF 224 LBS. PER SQ. YD.
T	SHOULDER RECONSTRUCTION / AGGREGATE SHOULDER BORROW
U	EXISTING CONCRETE PAVEMENT.
U1	EXISTING ASPHALT PAVEMENT.
V	MILL ASPHALT PAVEMENT APPROX. 5/8" DEPTH
V1	MILL ASPHALT PAVEMENT APPROX 2" DEPTH
V2	MILL ASPHALT PAVEMENT APPROX 0 TO 2" DEPTH
V3	INCIDENTAL MILLING
Y	PROP. APPROX. 5/8" ULTRA-THIN BONDED WEARING COURSE, AT AN AVERAGE RATE OF 70 LBS. PER SQ. YD. PER 5/8" DEPTH
Z	MILLED RUMBLE STRIPS

NOTE: PAVEMENT EDGE SLOPES ARE 1:1 UNLESS SHOWN OTHERWISE.

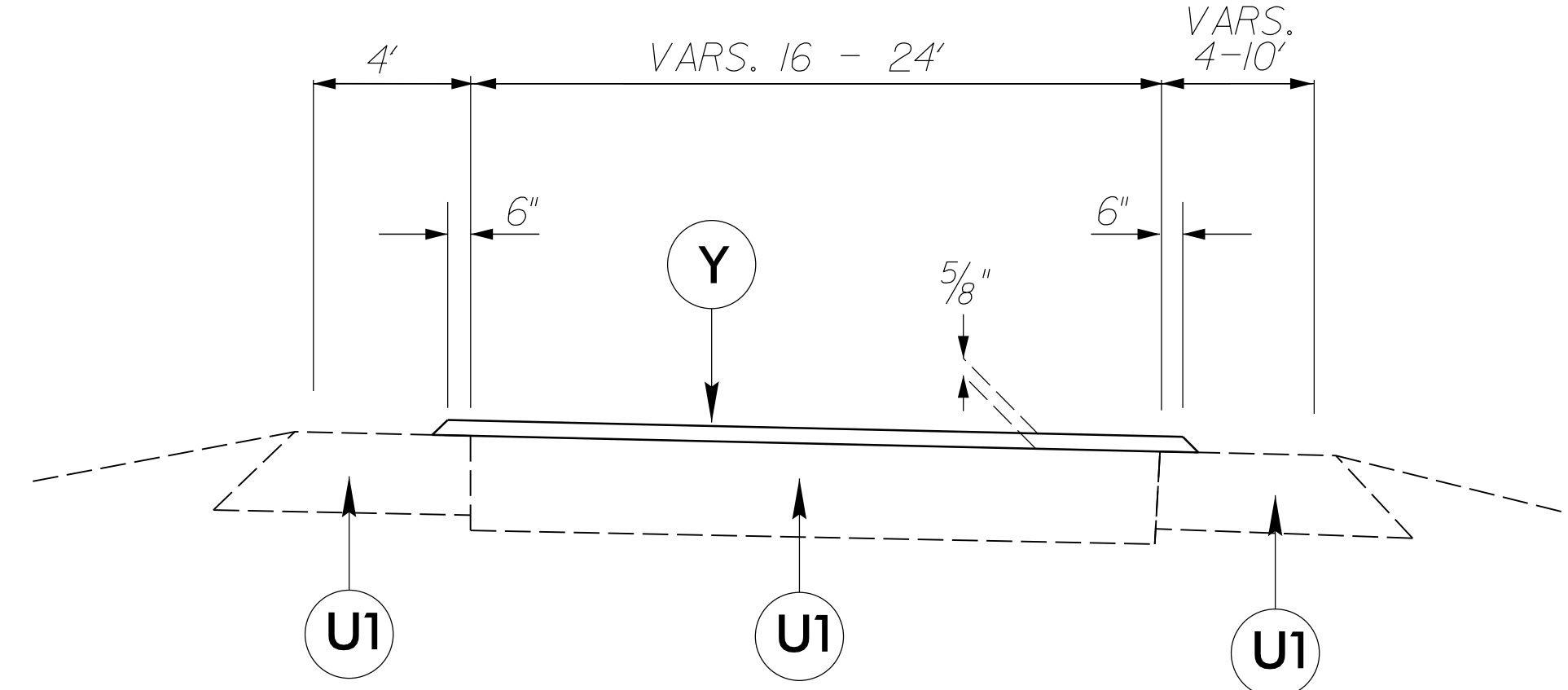
5/14/99

08-NOV-2024 09:37  
 \\Users\lbruce\1\desktop\1-5919\_RDY\_TYPS\_101723.dgn



### TYPICAL SECTION NO. 3

MAP 3 - EXIT 54 NB OFF-RAMP  
MAP 4 - EXIT 54 SB ON-RAMP



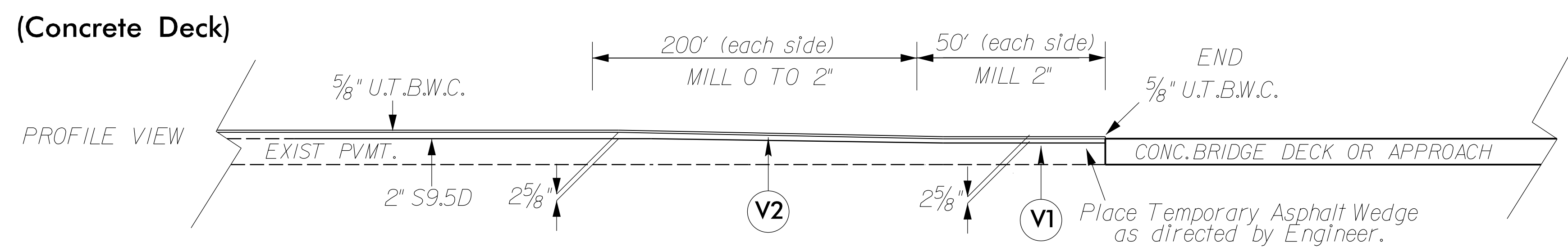
### TYPICAL SECTION NO. 4

MAP 5 - EXIT 54 NB ON-RAMP  
MAP 6 - EXIT 54 SB OFF-RAMP

\*NOTES FOR ALL TYPICALS:

-SEE BRIDGE APPROACH AND DEPARTURE DETAIL FOR PAVEMENT TRANSITIONS AT BRIDGE UNDERPASSES & OVERPASSES.

## Bridge Overpass Approach And Departure Details



USE DETAIL AT THE FOLLOWING LOCATIONS IN CONJUNCTION WITH TYPICAL NO. 1 & NO. 2 AT THE FOLLOWING OVERPASS BRIDGES:

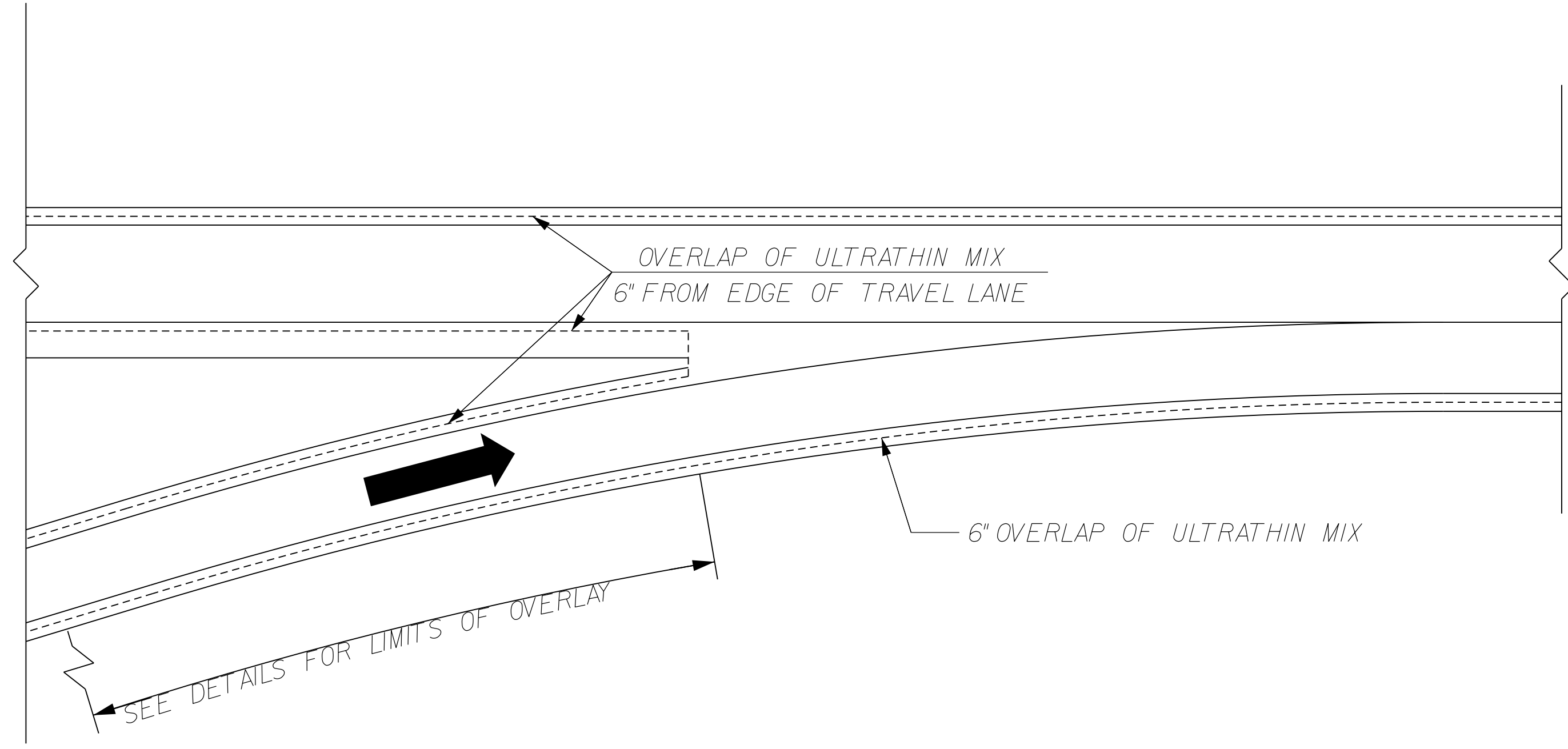
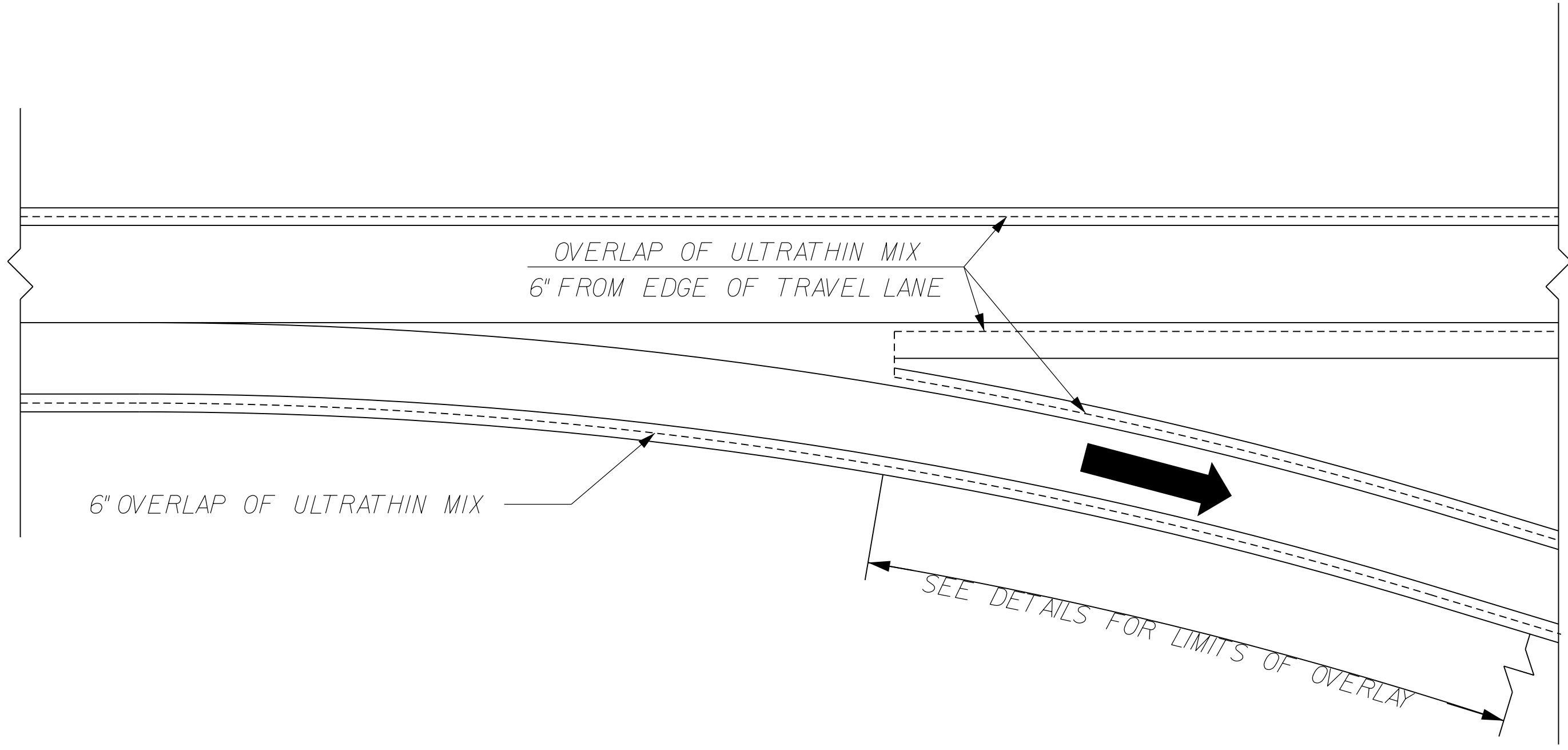
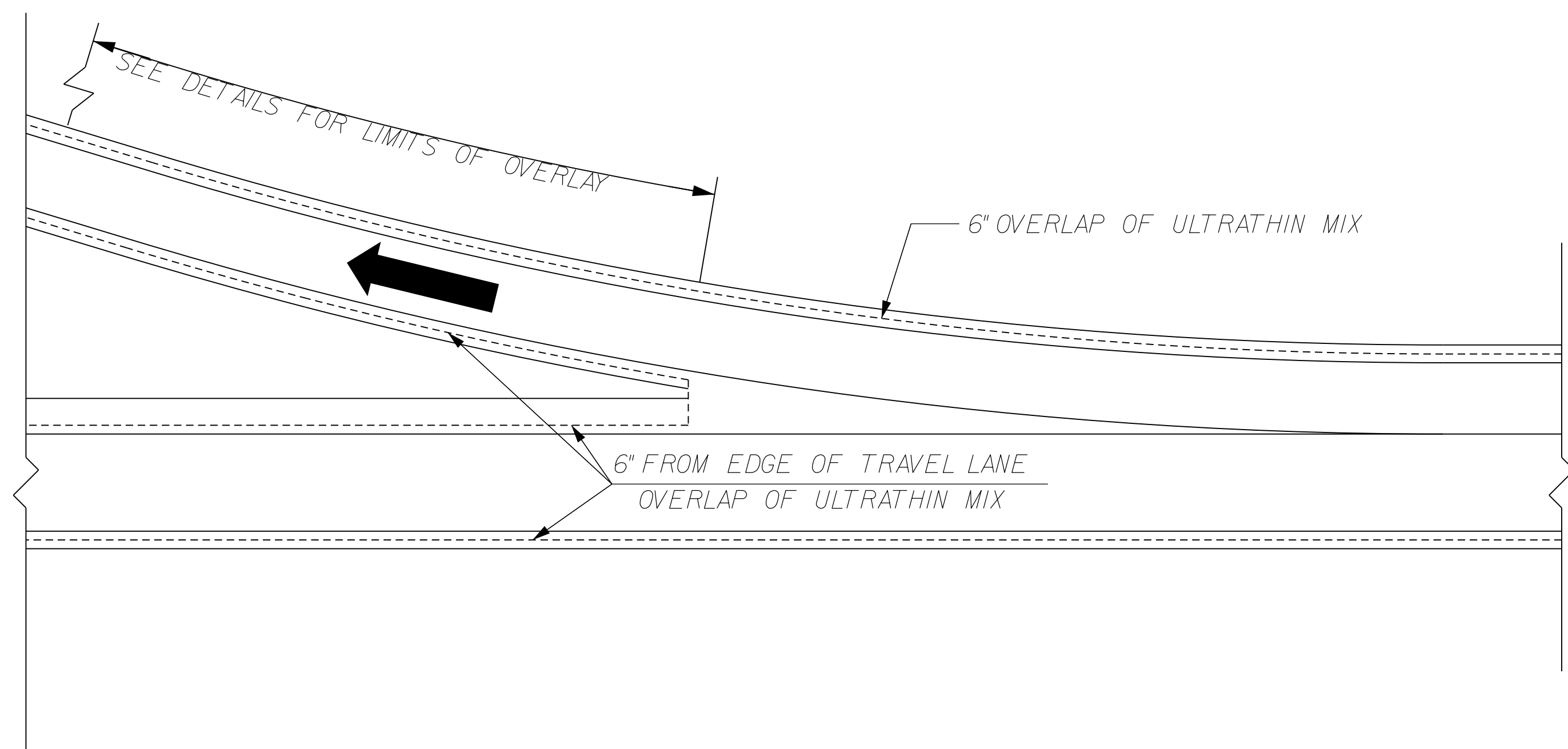
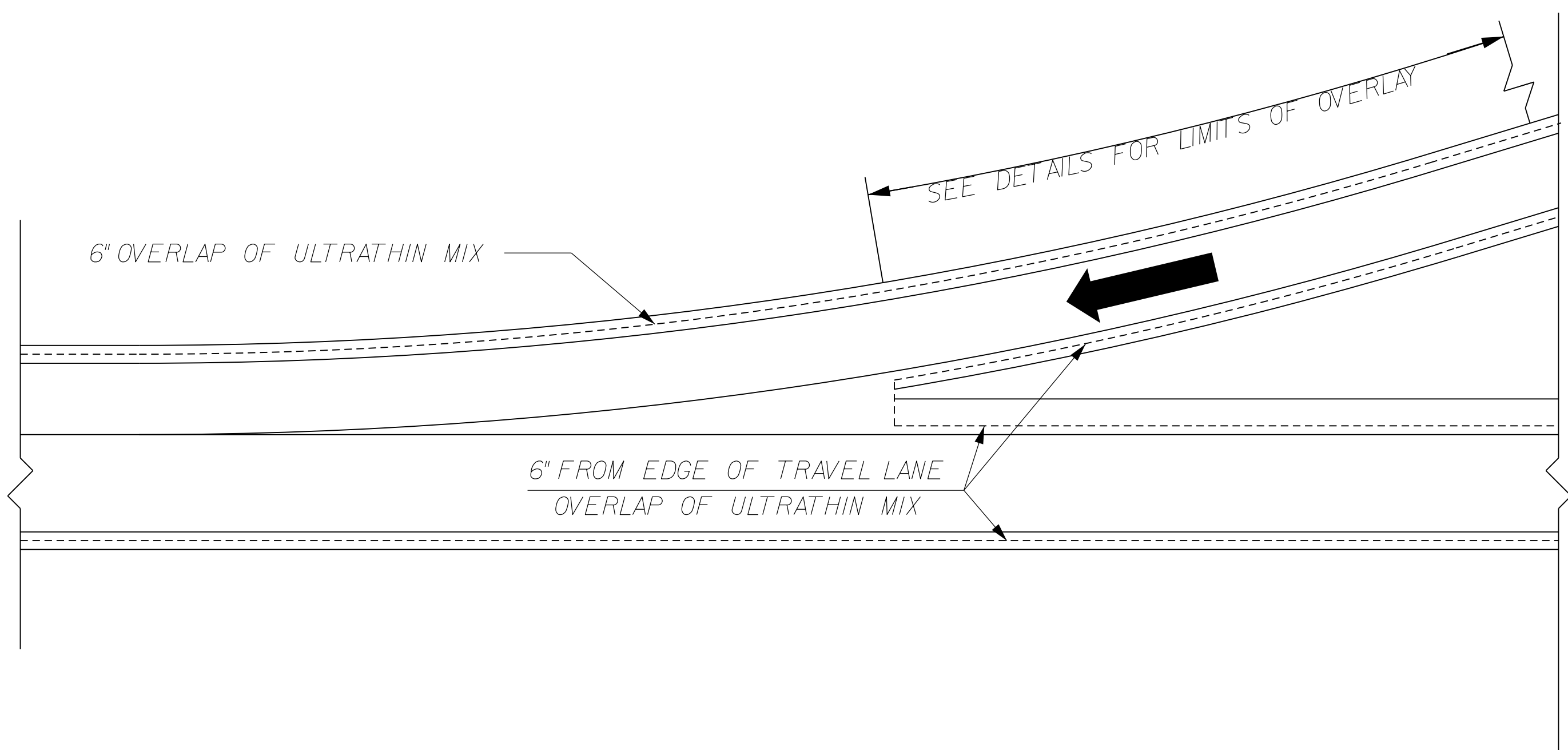
BRIDGE #193 - SOUTH END - S. YADKIN RIVER  
BRIDGE #194 - SOUTH END - S. YADKIN RIVER

### PAVEMENT SCHEDULE

C	PROP. APPROX. 2" ASPHALT CONCRETE SURFACE COURSE, TYPE S9.5D, AT AN AVERAGE RATE OF 224 LBS. PER SQ. YD.
T	SHOULDER RECONSTRUCTION / AGGREGATE SHOULDER BORROW
U	EXISTING CONCRETE PAVEMENT.
U1	EXISTING ASPHALT PAVEMENT.
V	MILL ASPHALT PAVEMENT APPROX. 5/8" DEPTH
V1	MILL ASPHALT PAVEMENT APPROX 2" DEPTH
V2	MILL ASPHALT PAVEMENT APPROX 0 to 2" DEPTH
V3	INCIDENTAL MILLING
Y	PROP. APPROX. 5/8" ULTRA-THIN BONDED WEARING COURSE, AT AN AVERAGE RATE OF 70 LBS. PER SQ. YD. PER 5/8" DEPTH
Z	MILLED RUMBLE STRIPS

NOTE: PAVEMENT EDGE SLOPES ARE 1:1 UNLESS SHOWN OTHERWISE.

5/14/99



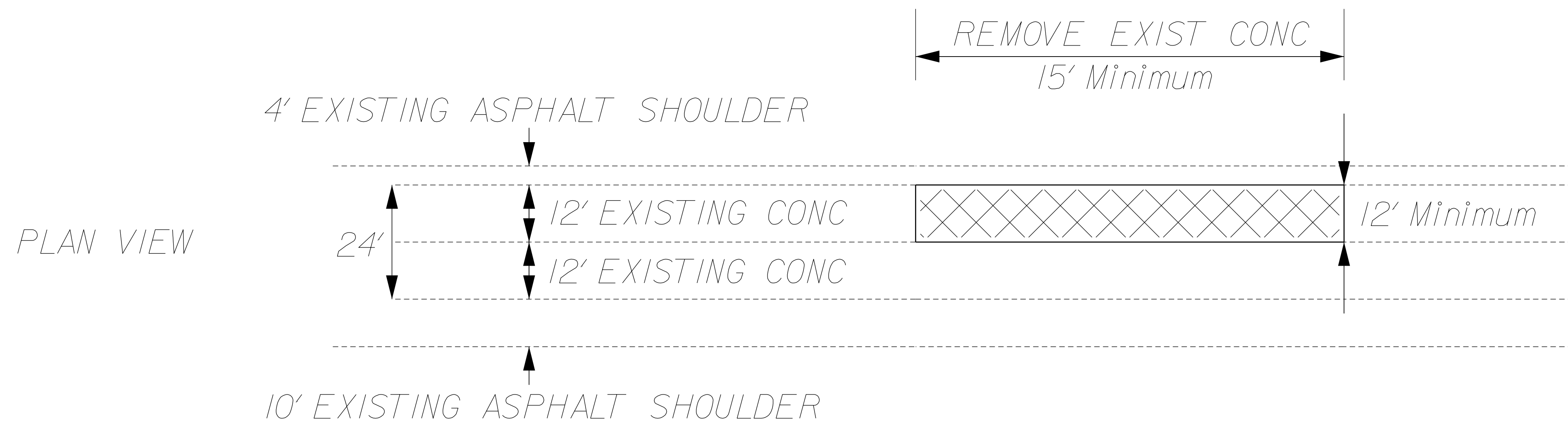
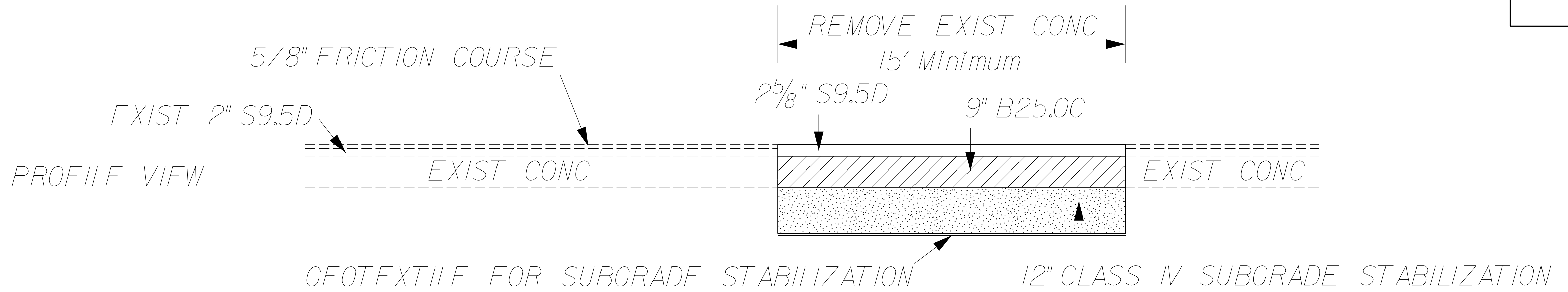
## GORE AND RAMP RESURFACING DETAIL

USE DETAIL IN CONJUNCTION WITH TYPICAL SECTIONS

C:\NOV-2004\_09-21\1-5919\_RDY\_TYPS.101723.dgn  
 User:V...



PROJECT REFERENCE NO.	SHEET NO.
1-5919	2B-2
RW SHEET NO.	
ROADWAY DESIGN ENGINEER	HYDRAULICS ENGINEER



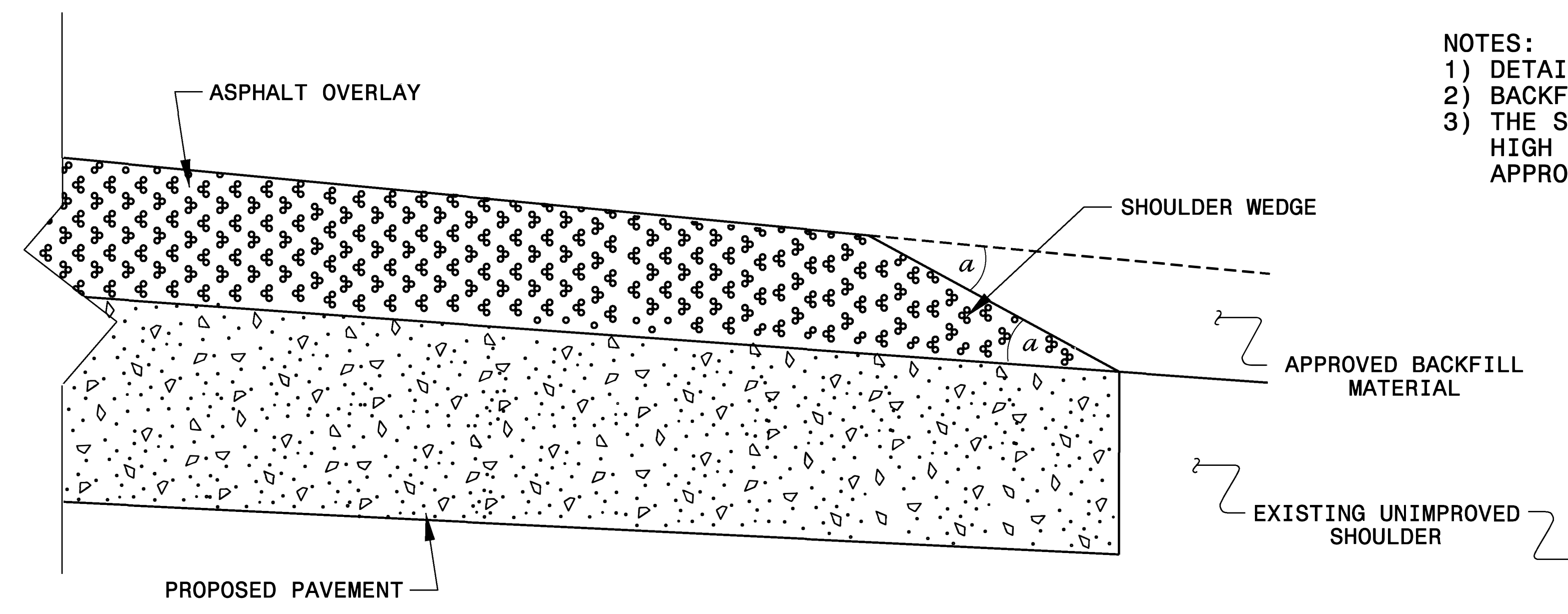
# Concrete Slab Removal and Asphalt Replacement Detail

Notes:

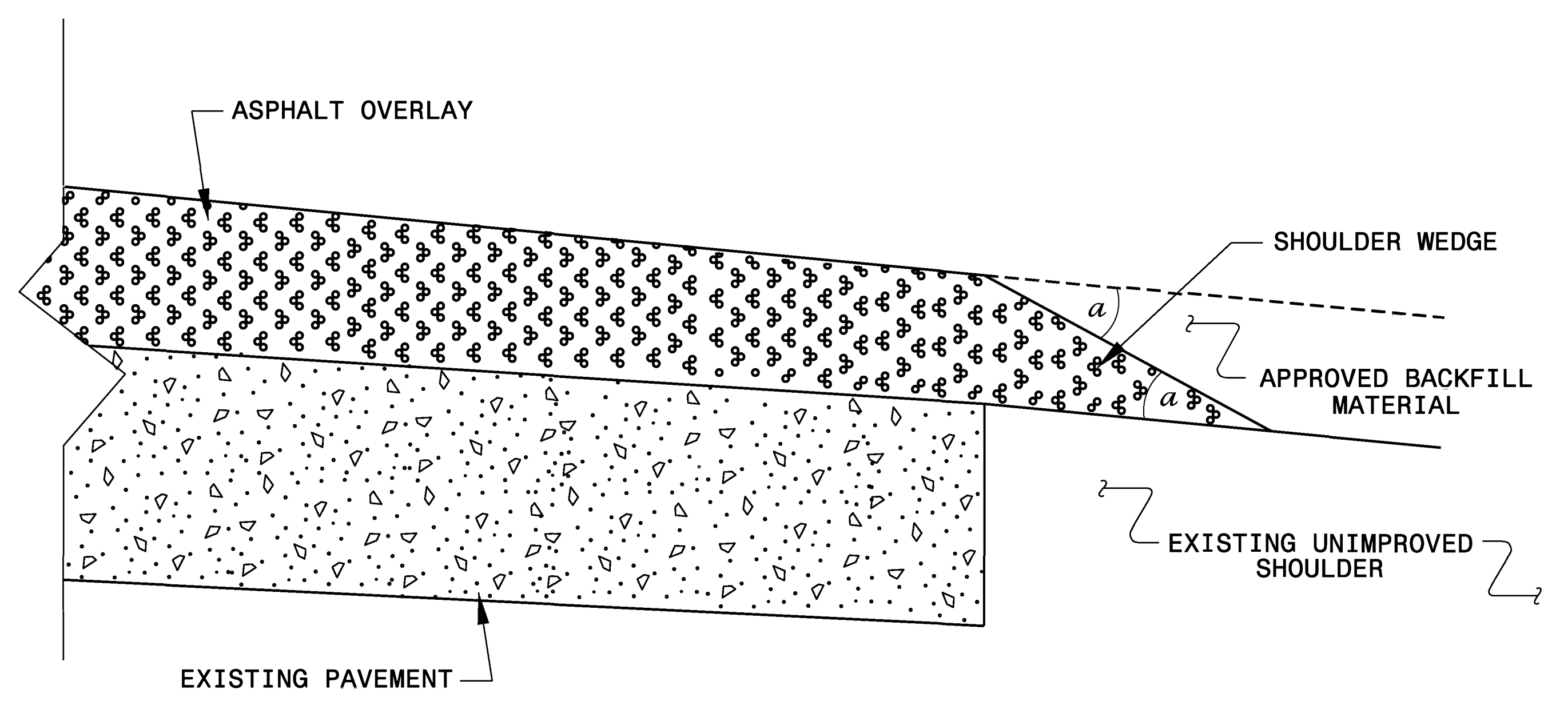
1. Breaking & Removal of Concrete Slabs will be paid as "Removal of Existing Concrete Pavement Slabs (SY)"
2. Asphalt placement will be paid for as "Patching Existing Pavement (Ton)."

18-NOV-2024 16:01  
 C:\Users\jfrank\OneDrive\Documents\1-5919 CAD\Files\1-5919\_Rdy\_dtl\_ConcSlabRemoval.dgn  
 53 to 57\Maps\_Tjps\_Details\1-5919 CAD\Files\1-5919\_Rdy\_dtl\_ConcSlabRemoval.dgn

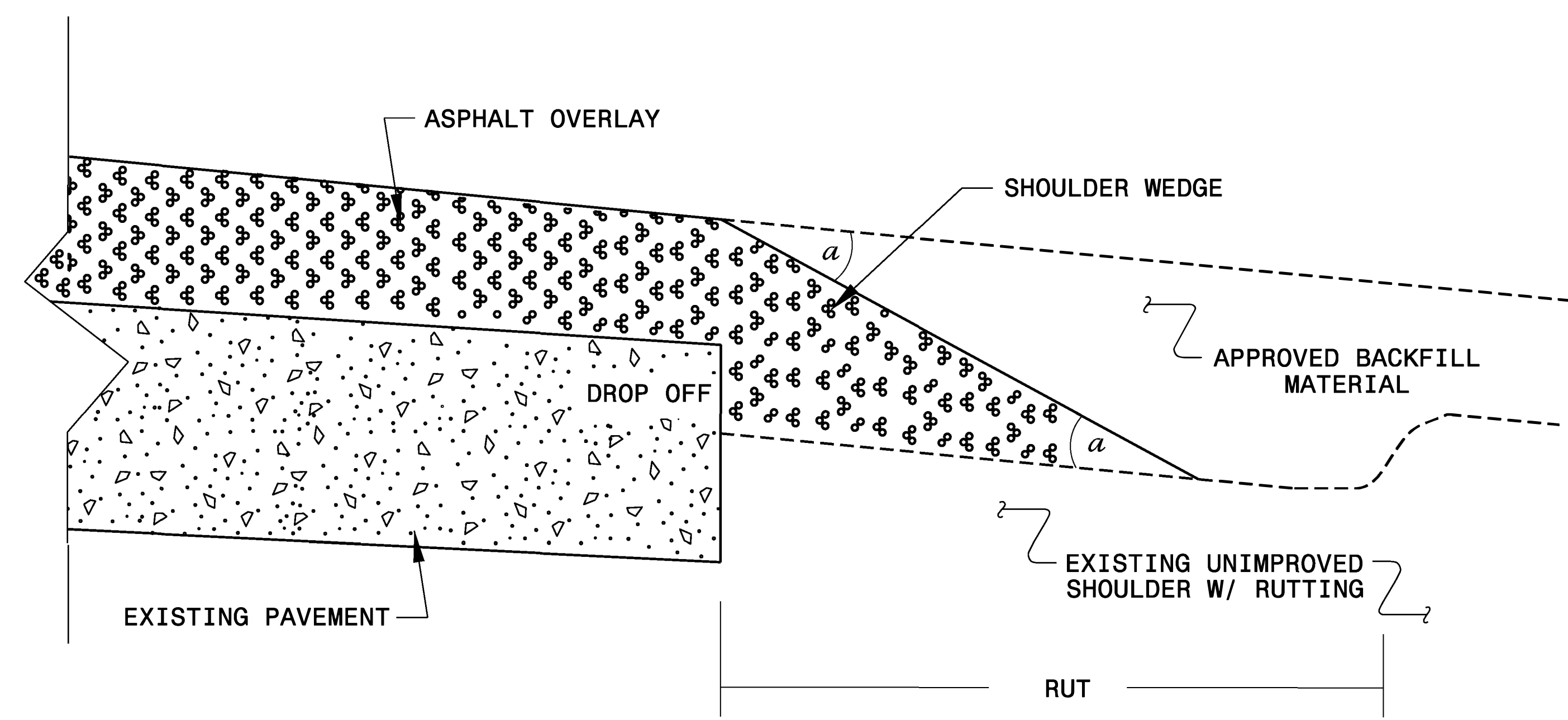
- NOTES:
- 1) DETAIL DOES NOT APPLY TO OGAFS AND ULTRA-THIN BONDED WEARING COURSE.
  - 2) BACKFILL SHOULDER WITH APPROVED MATERIAL.
  - 3) THE SHOULDER WEDGE DEVICE MAY BE DISENGAGED AT PAVED DRIVEWAYS, SIDE STREETS, HIGH SHOULDERS, AND OTHER LOCATIONS NOT FEASIBLE TO CONSTRUCT AS APPROVED BY THE ENGINEER.



**SHOULDER WEDGE DETAIL**  
(Resurfacing Projects w/ Widening or with Existing Paved Shoulder having no dropoffs)

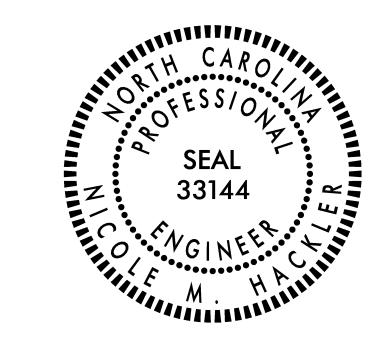


**SHOULDER WEDGE DETAIL**  
(Resurfacing Projects w/ NO Widening)



**SHOULDER WEDGE DETAIL**  
(Resurfacing Adjacent to Rutted Shoulder)

- SHOULDER WEDGE ANGLE = 30°



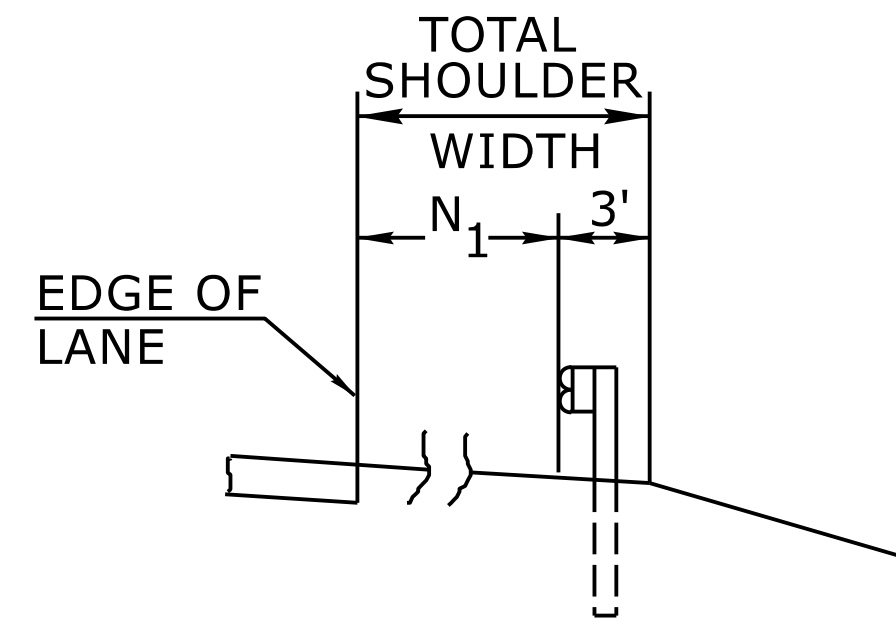
Signed by:  
*Nicole M. Heckler*  
5884323034164CS

12/06/2024

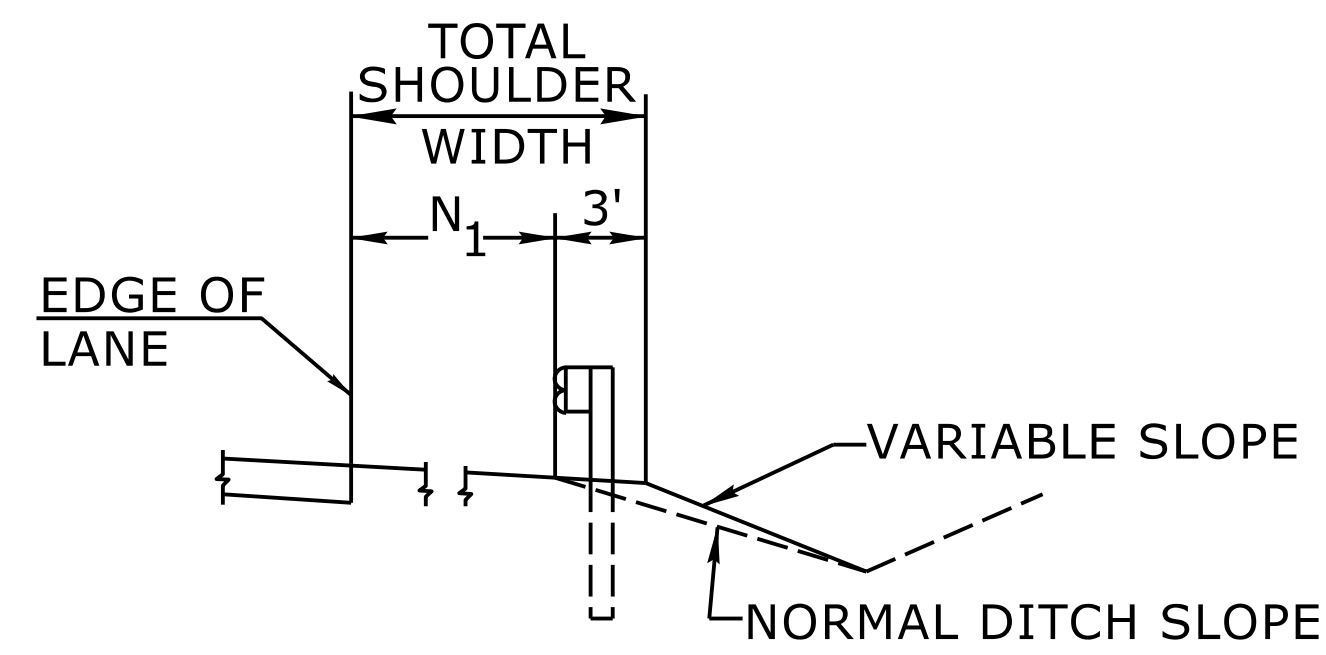
<b>CONTRACT STANDARDS AND DEVELOPMENT UNIT</b>	
Office 919-707-6950	FAX 919-250-4119
<b>SHOULDER WEDGE DETAILS</b>	
ORIGINAL BY: T.SPELL	DATE: 7-19-11
MODIFIED BY:	DATE: 2/2/16
CHECKED BY:	DATE:
FILE SPEC.: s:\usr\details\stand\shoulderwedgedetail.dgn	

DOCUMENT NOT CONSIDERED FINAL UNLESS ALL SIGNATURES COMPLETED

29-MAR-2017 07:24 S:\Contracts\Projects\Resurfacing\Projects\Shoulder-Wedge\Details\Revised Shoulder-Wedge-Detail.dgn J:\user\ton\_a\USD-292075

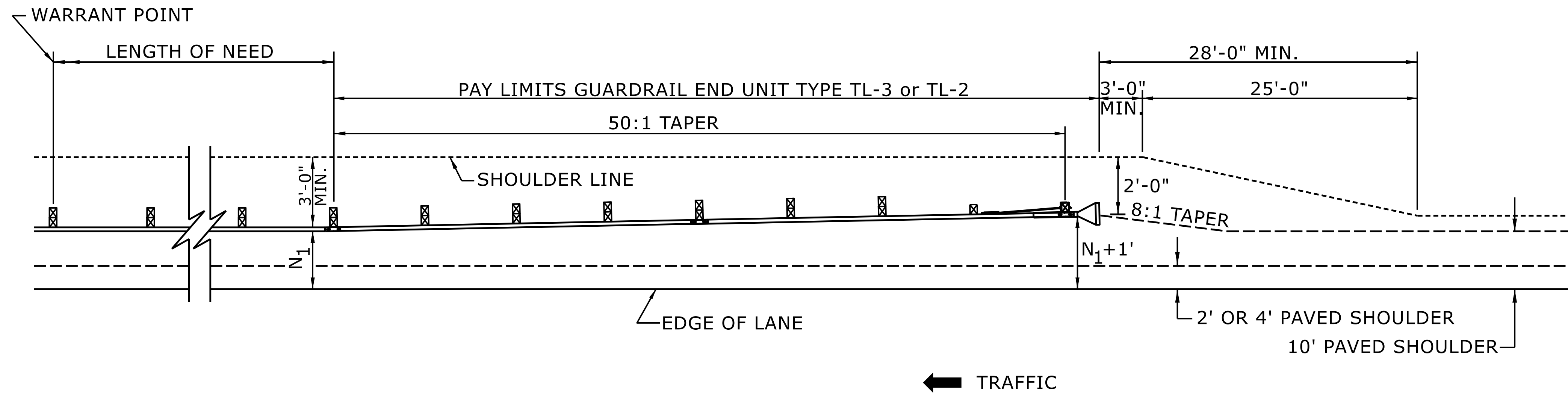


**FILL SECTION**



**CUT SECTION**

"N<sub>1</sub>" = DISTANCE FROM EDGE OF LANE TO FACE OF GUARDRAIL WHERE GUARDRAIL IS PARALLEL TO LANE.



FOR POSTED SPEEDS ≥ 45mph USE GREU TYPE TL-3  
 FOR POSTED SPEEDS < 45mph USE GREU TYPE TL-2

**DETAIL OF BEGINNING OF GUARDRAIL IN CUT OR FILL SECTION**

STATE OF  
 NORTH CAROLINA  
 DEPT. OF TRANSPORTATION  
 DIVISION OF HIGHWAYS  
 RALEIGH, N.C.

ROADWAY DETAIL DRAWING FOR  
**GUARDRAIL PLACEMENT**



Signed by:  
*Nicole M. Hackler*  
 588432303416405

SHEET 6 OF 15  
**862D01**

12/06/2024

DOCUMENT NOT CONSIDERED FINAL  
 UNLESS ALL SIGNATURES COMPLETED

**CONTRACTS STANDARDS  
 AND DEVELOPMENT UNIT**  
 Office 919-707-6950 FAX 919-250-4119

**SEE TITLE BLOCK**

ORIGINAL BY: S.CALHOUN DATE: 7-25-2024  
 MODIFIED BY: \_\_\_\_\_ DATE: \_\_\_\_\_  
 CHECKED BY: \_\_\_\_\_ DATE: \_\_\_\_\_  
 FILE SPEC.: \_\_\_\_\_







PROJECT NO.	SHEET NO.	TOTAL NO.
I-5919	3B-3	

### SUMMARY OF QUANTITIES

PROJECT NO	COUNTY	MAP NO	ROUTE	DESCRIPTION	TYP NO	LANES	LANE TYPE	FINAL SURFACE TESTING REQUIRED	WARM MIX ASPHALT REQUIRED	LENGTH	WIDTH	BEGIN MP	END MP	0170000000-E	1260000000-E	1099500000-E	1099700000-E	1112000000-E	1220000000-E	1245000000-E	1297000000-E		1308000000-E	1330000000-E	1491000000-E	1524200000-E	1575000000-E	1577000000-E	1704000000-E	
														REMOVAL OF EXST. CONC. PVMT. SLABS	AGGREGATE SHOULDER BORROW	SHALLOW UNDERCUT	CLASS IV SUBGRADE STABILIZATION	GEOTEXTILE FOR SUBGRADE STABILIZATION	INCIDENTAL STONE BASE	SHOULDER RECONSTRUCTION	5/8" MILLING	2" MILLING	0" TO 2" MILLING	INCIDENTAL MILLING	BASE COURSE, B25.0C	ASPHALT CONC SURFACE COURSE, TYPE S9.5D	ASPHALT BINDER FOR PLANT MIX	POLYMER MODIFIED ASPHALT BINDER	PATCHING EXISTING PAVEMENT	
														SY	TON	CY	TON	SY	TON	SMI	SY	SY	SY	SY	TON	TON	TON	TON	TON	
45926.3.1	Iredell	1	I-77 N	FROM MM 52.6 (END I-3819) TO MM 56.77 (S. YADKIN RVR BRIDGE)	1, 2	2	MD	NO	NO	4.17	40	52.6	56.77	334	1,000	75	250	334	100	8.34	17,500	1,200	4,500	900	175	12,270	70	845	1,200	
<b>TOTAL FOR MAP NO. 1</b>										<b>4.17</b>				<b>334</b>	<b>1,000</b>	<b>75</b>	<b>250</b>	<b>334</b>	<b>100</b>	<b>8.34</b>	<b>17,500</b>	<b>1,200</b>	<b>4,500</b>	<b>900</b>	<b>175</b>	<b>12,270</b>	<b>70</b>	<b>845</b>	<b>1,200</b>	
45926.3.1	Iredell	2	I-77 S	FROM MM 52.6 (END I-3819) TO MM 56.77 (S. YADKIN RVR BRIDGE)	1, 2	2	MD	NO	NO	4.17	40	52.6	56.77	334	1,000	75	250	334	100	8.34	17,500	750	2,700	900	175	12,291	70	846	1,200	
<b>TOTAL FOR MAP NO. 2</b>										<b>4.17</b>				<b>334</b>	<b>1,000</b>	<b>75</b>	<b>250</b>	<b>334</b>	<b>100</b>	<b>8.34</b>	<b>17,500</b>	<b>750</b>	<b>2,700</b>	<b>900</b>	<b>175</b>	<b>12,291</b>	<b>70</b>	<b>846</b>	<b>1,200</b>	
45926.3.1	Iredell	3	EXIT 54 - NB OFF RAMP	FROM I-77 NB TO US 21	3	1		NO	NO	0.27	30	0	0.27																7	
<b>TOTAL FOR MAP NO. 3</b>										<b>0.27</b>																				7
45926.3.1	Iredell	4	EXIT 54 - SB ON-RAMP	FROM US 21 TO I-77 SB	3	1		NO	NO	0.27	30	0	0.27																8	
<b>TOTAL FOR MAP NO. 4</b>										<b>0.27</b>																				8
45926.3.1	Iredell	5	EXIT 54 - NB ON-RAMP	FROM US 21 TO I-77 NB	4	1		NO	NO	0.19	30	0	0.19																7	
<b>TOTAL FOR MAP NO. 5</b>										<b>0.19</b>																				7
45926.3.1	Iredell	6	EXIT 54 - SB OFF-RAMP	FROM I-77 SB TO US 21	4	1		NO	NO	0.31	30	0	0.31																8	
<b>TOTAL FOR MAP NO. 6</b>										<b>0.31</b>																				8
<b>TOTAL FOR PROJ NO. 45926.3.1</b>										<b>9.38</b>				<b>668</b>	<b>2,000</b>	<b>150</b>	<b>500</b>	<b>668</b>	<b>200</b>	<b>16.68</b>	<b>41,750</b>	<b>1,950</b>	<b>7,200</b>	<b>1,800</b>	<b>350</b>	<b>24,561</b>	<b>140</b>	<b>1,721</b>	<b>2,400</b>	
<b>GRAND TOTAL</b>										<b>9.38</b>				<b>668.00</b>	<b>2,000</b>	<b>150</b>	<b>500</b>	<b>668</b>	<b>200</b>	<b>16.68</b>	<b>41,750</b>	<b>1,950</b>	<b>7,200</b>	<b>1,800</b>	<b>350</b>	<b>24,561</b>	<b>140</b>	<b>1,721</b>	<b>2,400</b>	



PROJECT NO.	SHEET NO.	TOTAL NO.
I-5919	3B-4	

### SUMMARY OF QUANTITIES

PROJECT NO	COUNTY	MAP NO	ROUTE	DESCRIPTION	TYP NO	LANES	LANE TYPE	FINAL SURFACE TESTING REQUIRED	WARM MIX ASPHALT REQUIRED	LENGTH	WIDTH	BEGIN MP	END MP	1839140000-E	1841000000-E	3030000000-E	3150000000-N	3210000000-N	3287000000-N	3215000000-N	3360000000-E	3420000000-E	3420000000-E	3435000000-N	5255000000-N															
														ULTRA-THIN BONDED WEARING COURSE	MILLED RUMBLE STRIPS (ASPHALT CONCRETE), 16"	STEEL BEAM GUARDRAIL	ADDITIONAL GUARDRAIL POSTS	GUARDRAIL END UNITS, TYPE CAT-1	GUARDRAIL END UNITS, TYPE TL-3	GUARDRAIL ANCHOR UNIT, TYPE III	REMOVE EXISTING GUARDRAIL	CABLE GUIDERAIL ANCHOR UNIT	CABLE GUIDERAIL REPAIR	REMOVE & RESET EXST. GDRAIL END UNIT	PORTABLE LIGHTING															
														MI	FT																									
														TON	LF	LF	EA	EA	EA	EA	LF	EA	LF	EA	LS															
45926.3.1	Iredell	1	I-77 N	FROM MM 52.6 (END I-3819) TO MM 56.77 (S. YADKIN RVR BRIDGE)	1, 2	2	MD	NO	NO	4.17	40	52.6	56.77	2,556	44,035	13,312.00	25.00	6.00	15.00	1.00	13,312.00	1	2,500.00	3	*															
<b>TOTAL FOR MAP NO. 1</b>														<b>4.17</b>							<b>2,556</b>	<b>44,035</b>	<b>13,312.00</b>	<b>25.00</b>	<b>6.00</b>	<b>15.00</b>	<b>1.00</b>	<b>13,312.00</b>	<b>1</b>	<b>2,500.00</b>	<b>3</b>	<b>*</b>								
45926.3.1	Iredell	2	I-77 S	FROM MM 52.6 (END I-3819) TO MM 56.77 (S. YADKIN RVR BRIDGE)	1, 2	2	MD	NO	NO	4.17	40	52.6	56.77	2,563	44,035	17,028.00	25.00	12.00	15.00	1.00	17,028.00			3	*															
<b>TOTAL FOR MAP NO. 2</b>														<b>4.17</b>							<b>2,563</b>	<b>44,035</b>	<b>17,028.00</b>	<b>25.00</b>	<b>12.00</b>	<b>15.00</b>	<b>1.00</b>	<b>17,028.00</b>	<b>0</b>		<b>3</b>	<b>*</b>								
45926.3.1	Iredell	3	EXIT 54 - NB OFF RAMP	FROM I-77 NB TO US 21	3	1		NO	NO	0.27	30	0	0.27	127										3	*															
<b>TOTAL FOR MAP NO. 3</b>														<b>0.27</b>							<b>127</b>								<b>0</b>		<b>3</b>	<b>*</b>								
45926.3.1	Iredell	4	EXIT 54 - SB ON-RAMP	FROM US 21 TO I-77 SB	3	1		NO	NO	0.27	30	0	0.27	153										0	*															
<b>TOTAL FOR MAP NO. 4</b>														<b>0.27</b>							<b>153</b>								<b>0</b>		<b>0</b>	<b>*</b>								
45926.3.1	Iredell	5	EXIT 54 - NB ON-RAMP	FROM US 21 TO I-77 NB	4	1		NO	NO	0.19	30	0	0.19	136										0	*															
<b>TOTAL FOR MAP NO. 5</b>														<b>0.19</b>							<b>136</b>								<b>0</b>		<b>0</b>	<b>*</b>								
45926.3.1	Iredell	6	EXIT 54- SB OFF-RAMP	FROM I-77 SB TO US 21	4	1		NO	NO	0.31	30	0	0.31	159										0	*															
<b>TOTAL FOR MAP NO. 6</b>														<b>0.31</b>							<b>159</b>								<b>0</b>		<b>0</b>	<b>*</b>								
<b>TOTAL FOR PROJ NO. 45926.3.1</b>														<b>9.38</b>							<b>5,694</b>	<b>88,070</b>	<b>30,340.00</b>	<b>50.00</b>	<b>18.00</b>	<b>30.00</b>	<b>2.00</b>	<b>30,340.00</b>	<b>1</b>	<b>2,500.00</b>	<b>6</b>	<b>*</b>								
<b>GRAND TOTAL</b>																					<b>9.38</b>								<b>5,694</b>	<b>88,070</b>	<b>30,340.00</b>	<b>50.00</b>	<b>18.00</b>	<b>30.00</b>	<b>2.00</b>	<b>30,340.00</b>	<b>1</b>	<b>2,500.00</b>	<b>6</b>	<b>1</b>

PROJECT NO.	SHEET NO.	TOTAL NO.
I-5919	3B-5	

### THERMOPLASTIC AND PAINT QUANTITIES

PROJECT NO	COUNTY	MAP NO	ROUTE	DESCRIPTION	TYP NO	LANES	LANE TYPE	LENGTH	WIDTH	BEGIN MP	END MP	4725000000-E	4725000000-E	4725000000-E	4815000000-E	4825000000-E	4845000000-N	4846000000-E			4855000000-E	4895000000-N	
												THERMO MERGE ARROW 90 M	THERMO LT ARROW 90 M	THERMO RT ARROW 90 M	6" WHITE PAINT	12" WHITE PAINT	PAINT MERGE ARROW	POLYUREA PAVEMENT MARKING LINES (6", 30 MILS) WHITE	POLYUREA PAVEMENT MARKING LINES (6", 30 MILS) YELLOW	POLYUREA PAVEMENT MARKING LINES (12", 30 MILS) WHITE	6" LINE REMOVAL	POLYCARBONATE H-SHAPED PAVEMENT MARKER	
												EA	EA	EA	LF	LF	EA	LF	LF	LF	LF	EA	
45926.3.1	Iredell	1	I-77 N	FROM MM 52.6 (END I-3819) TO MM 56.77 (S. YADKIN RVR BRIDGE)	1, 2	2	MD	4.17	40	52.6	56.77	3			52,750	1,400	3	30,250	22,500	1,400		350	
<b>TOTAL FOR MAP NO. 1</b>								<b>4.17</b>				<b>3</b>			<b>52,750</b>	<b>1,400</b>	<b>3</b>	<b>30,250</b>	<b>22,500</b>	<b>1,400</b>		<b>350</b>	
45926.3.1	Iredell	2	I-77 S	FROM MM 52.6 (END I-3819) TO MM 56.77 (S. YADKIN RVR BRIDGE)	1, 2	2	MD	4.17	40	52.6	56.77	3			52,750	1,400	3	30,250	22,500	1,400		350	
<b>TOTAL FOR MAP NO. 2</b>								<b>4.17</b>				<b>3</b>			<b>52,750</b>	<b>1,400</b>	<b>3</b>	<b>30,250</b>	<b>22,500</b>	<b>1,400</b>		<b>350</b>	
45926.3.1	Iredell	3	EXIT 54 - NB OFF RAMP	FROM I-77 NB TO US 21	3	1		0.27	30	0	0.27		1	1				1,300	1,200				
<b>TOTAL FOR MAP NO. 3</b>								<b>0.27</b>					<b>1</b>	<b>1</b>					<b>1,300</b>	<b>1,200</b>			
45926.3.1	Iredell	4	EXIT 54 - SB ON-RAMP	FROM US 21 TO I-77 SB	3	1		0.27	30	0	0.27							1,400	1,150				
<b>TOTAL FOR MAP NO. 4</b>								<b>0.27</b>											<b>1,400</b>	<b>1,150</b>			
45926.3.1	Iredell	5	EXIT 54 - NB ON-RAMP	FROM US 21 TO I-77 NB	4	1		0.19	30	0	0.19							1,100	1,000		1,350		
<b>TOTAL FOR MAP NO. 5</b>								<b>0.19</b>											<b>1,100</b>	<b>1,000</b>		<b>1,350</b>	
45926.3.1	Iredell	6	EXIT 54 - SB OFF-RAMP	FROM I-77 SB TO US 21	4	1		0.31	30	0	0.31		1	1				1,500	1,200		2,500		
<b>TOTAL FOR MAP NO. 6</b>								<b>0.31</b>					<b>1</b>	<b>1</b>					<b>1,500</b>	<b>1,200</b>		<b>2,500</b>	
<b>TOTAL FOR PROJ NO. 45926.3.1</b>								<b>9.38</b>					<b>6</b>	<b>2</b>	<b>2</b>	<b>105,500</b>	<b>2,800</b>	<b>6</b>	<b>65,800</b>	<b>49,550</b>	<b>2,800</b>	<b>3,850</b>	<b>700</b>
<b>TOTAL FOR PROJ NO. 45926.3.1</b>								<b>9.38</b>					<b>6</b>	<b>2</b>	<b>2</b>	<b>105,500</b>	<b>2,800</b>	<b>6</b>	<b>65,800</b>	<b>49,550</b>	<b>2,800</b>	<b>3,850</b>	<b>700</b>
<b>GRAND TOTAL</b>													<b>10</b>						<b>115,350</b>				

PROJECT NO.	SHEET NO.
I-5919	3B-6

**I-5919 - TEMPORARY TRAFFIC CONTROL QUANTITIES**

PROJECT NO	COUNTY	MAP NO	ROUTE	DESCRIPTION	4600000000-N				4400000000-E	4423000000-N	4424000000-N	4434000000-N	4510000000-N
					SINGLE LANE CLOSURE	DOUBLE LANE CLOSURE	RAMP/ LOOP CLOSURES	CONNECTED LANE CLOSURE SYSTEM	STATIONARY WORK ZONE SIGNS	WORK ZONE DIGITAL SPEED LIMIT SIGNS	WORK ZONE PRESENCE LIGHTING	SEQUENTIAL FLASHING WARNING LIGHTS	LAW ENFORCEMENT
					EA	EA	EA	EA	SF	EA	EA	EA	HR
45926.3.1	Iredell	1	I-77 N	FROM MM 52.6 (END I-3819) TO MM 56.77 (S. YADKIN RVR BRIDGE)	68	5		2	104	5	24	12	1,677
<b>TOTAL FOR MAP NO. 1</b>					<b>68</b>	<b>5</b>		<b>2</b>	<b>104</b>	<b>5</b>	<b>24</b>	<b>12</b>	<b>1,677</b>
45926.3.1	Iredell	2	I-77 S	FROM MM 52.6 (END I-3819) TO MM 56.77 (S. YADKIN RVR BRIDGE)	73			2	104	5	12	12	1,677
<b>TOTAL FOR MAP NO. 2</b>					<b>73</b>			<b>2</b>	<b>104</b>	<b>5</b>	<b>12</b>	<b>12</b>	<b>1,677</b>
45926.3.1	Iredell	3	EXIT 54 - NB OFF RAMP	FROM I-77 NB TO US 21			1		8				8
<b>TOTAL FOR MAP NO. 3</b>							<b>1</b>		<b>8</b>				<b>8</b>
45926.3.1	Iredell	4	EXIT 54 - SB ON-RAMP	FROM US 21 TO I-77 SB			1		16				8
<b>TOTAL FOR MAP NO. 4</b>							<b>1</b>		<b>16</b>				<b>8</b>
45926.3.1	Iredell	5	EXIT 54 - NB ON-RAMP	FROM US 21 TO I-77 NB			1		8				8
<b>TOTAL FOR MAP NO. 5</b>							<b>1</b>		<b>8</b>				<b>8</b>
45926.3.1	Iredell	6	EXIT 54- SB OFF-RAMP	FROM I-77 SB TO US 21			1		16				8
<b>TOTAL FOR MAP NO. 6</b>							<b>1</b>		<b>16</b>				<b>8</b>
<b>TOTAL FOR PROJECT 45926.3.1</b>					<b>141</b>	<b>5</b>	<b>4</b>	<b>4</b>	<b>256</b>	<b>10</b>	<b>36</b>	<b>24</b>	<b>3,386</b>