

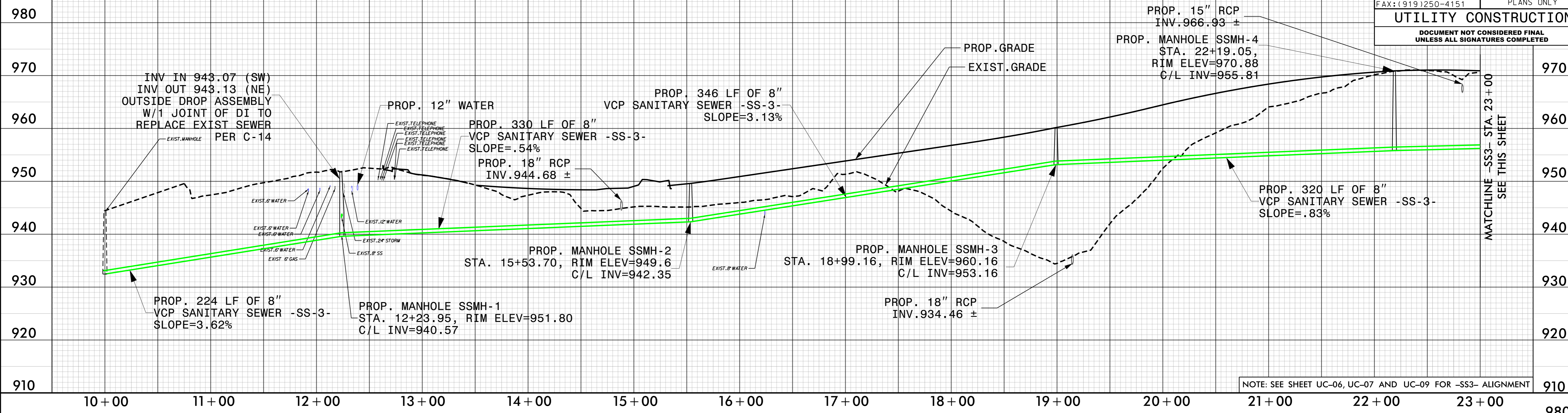
5/28/99

SCALE: 1" = 50' (HORZ.)  
1" = 5' (VERT.)

**-SS3-**

NOTE : ALL PROP. MANHOLES WILL BE 4' DIA. W/STD. RING AND COVER

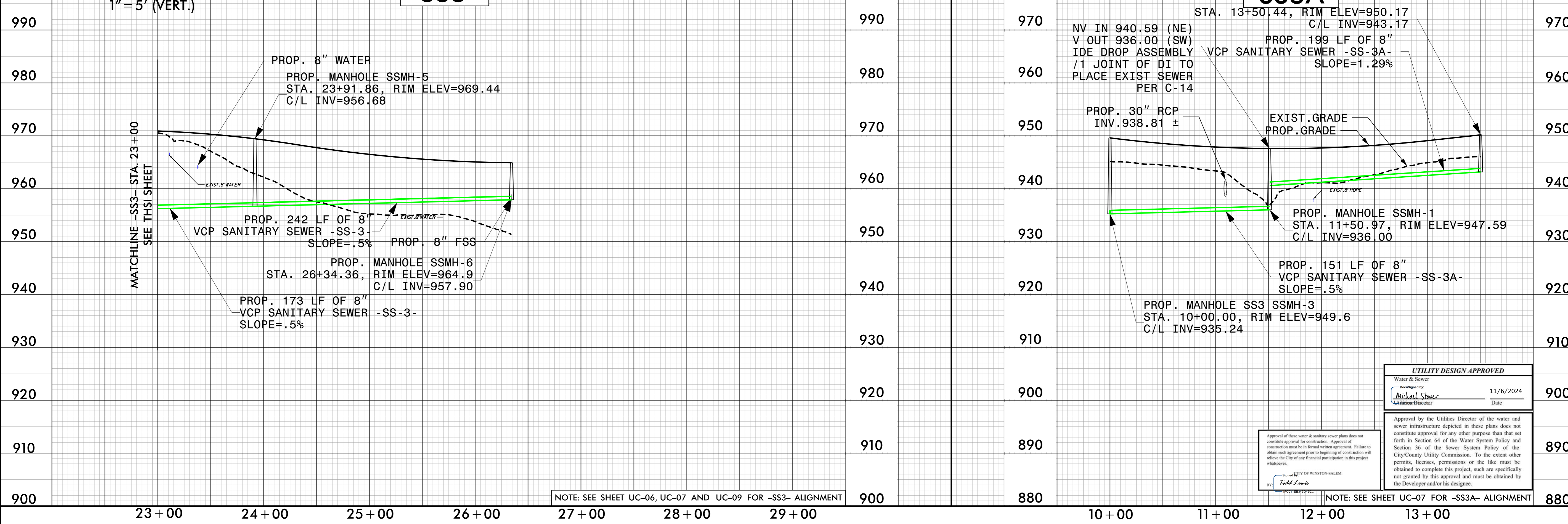
PROJECT REFERENCE NO.	U-5536	SHEET NO.	UC-20
DESIGNED BY:	PRJ		
DRAWN BY:	SSM		
CHECKED BY:	MAP		
APPROVED BY:			
REVISED:			
NORTH CAROLINA DEPARTMENT OF TRANSPORTATION		UTILITY CONSTRUCTION PLANS ONLY	
UTILITIES ENGINEERING SEC. PHONE: (919) 707-6690 FAX: (919) 250-4151			
<b>UTILITY CONSTRUCTION</b>			
DOCUMENT NOT CONSIDERED FINAL UNLESS ALL SIGNATURES COMPLETED			



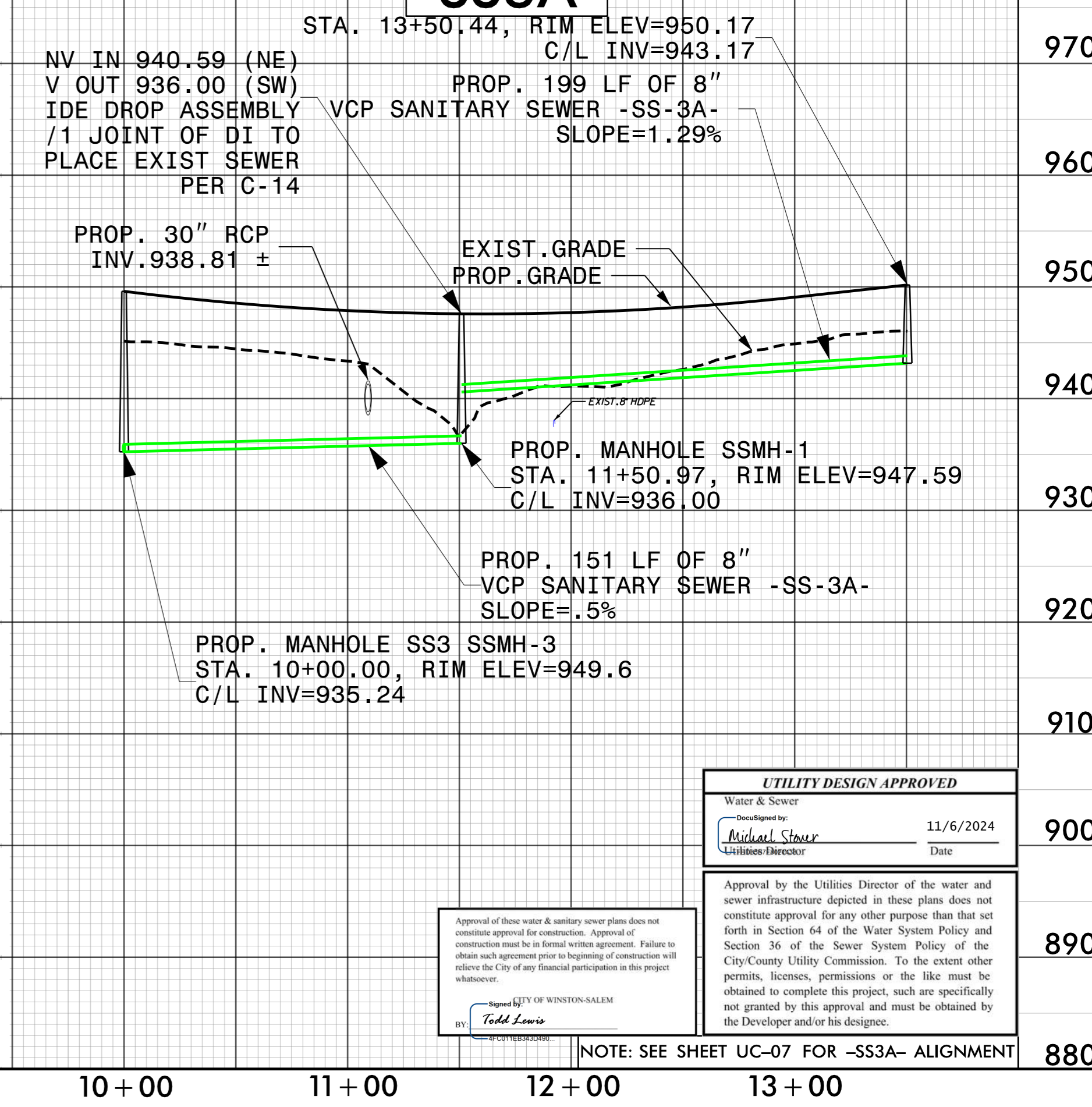
SCALE: 1" = 50' (HORZ.)  
1" = 5' (VERT.)

**-SS3-**

MATCHLINE -SS3- STA. 23+00  
SEE THIS SHEET



**-SS3A-**



**UTILITY DESIGN APPROVED**

Water & Sewer

Designed by: Michael Stover Date: 11/6/2024

Utilities Director

Approval of these water & sanitary sewer plans does not constitute approval for construction. Approval of construction must be in formal written agreement. Failure to obtain such agreement prior to beginning of construction will relieve the City of any financial participation in this project whatsoever.

BY: Todd Lewis

CITY OF WINSTON-SALEM

Approval by the Utilities Director of the water and sewer infrastructure depicted in these plans does not constitute approval for any other purpose than that set forth in Section 64 of the Water System Policy and Section 36 of the Sewer System Policy of the City/County Utility Commission. To the extent other permits, licenses, permissions or the like must be obtained to complete this project, such are specifically not granted by this approval and must be obtained by the Developer and/or his designee.

-SYSTEM-NUFE536-ut\_UC20.psh.dgn