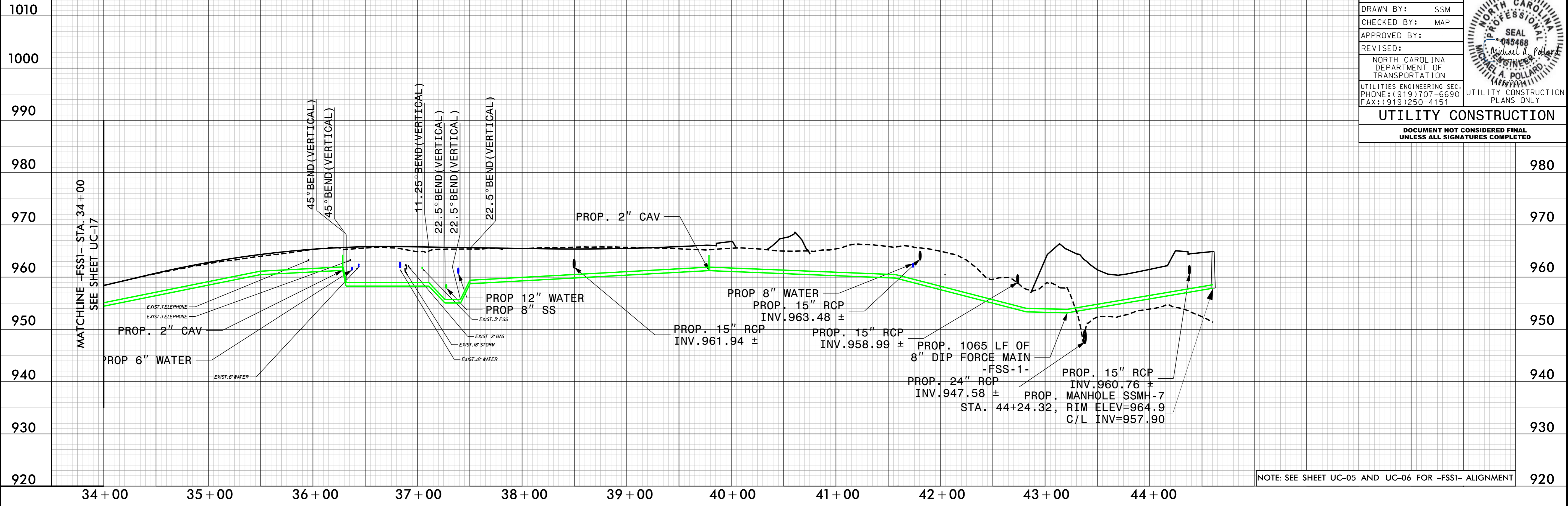


5/28/99

SCALE: 1" = 50' (HORZ.)
1" = 5' (VERT.)

-FSS1-

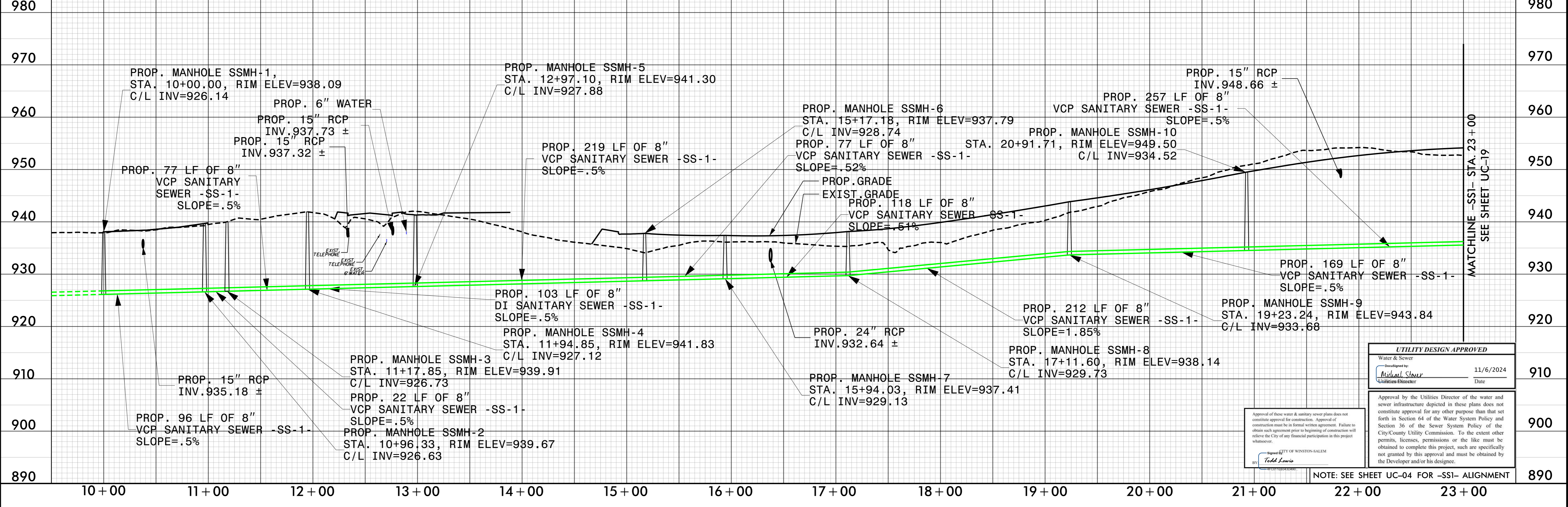
PROJECT REFERENCE NO.	U-5536	SHEET NO.	UC-18
DESIGNED BY:	PRJ		
DRAWN BY:	SSM		
CHECKED BY:	MAP		
APPROVED BY:			
REVISED:		NORTH CAROLINA DEPARTMENT OF TRANSPORTATION UTILITIES ENGINEERING SEC. PHONE: (919) 707-6690 FAX: (919) 250-4151	
UTILITY CONSTRUCTION			
DOCUMENT NOT CONSIDERED FINAL UNLESS ALL SIGNATURES COMPLETED			



NOTE: SEE SHEET UC-05 AND UC-06 FOR -FSS1- ALIGNMENT

SCALE: 1" = 50' (HORZ.)
1" = 5' (VERT.)

-SS1-



Approval of these water & sanitary sewer plans does not constitute approval for construction. Approval of construction must be in formal written agreement. Failure to obtain such agreement prior to beginning of construction will reflect the City of any financial participation in this project whatsoever.

Todd Lewis
 CITY OF WINSTON-SALEM
 UTILITIES DEPARTMENT

UTILITY DESIGN APPROVED

Water & Sewer
 Designed by: *Michael Stover*
 Qualified Designer
 Date: 11/6/2024

Approval by the Utilities Director of the water and sewer infrastructure depicted in these plans does not constitute approval for any other purpose than that set forth in Section 64 of the Water System Policy and Section 36 of the Sewer System Policy of the City/County Utility Commission. To the extent other permits, licenses, permissions or the like must be obtained to complete this project, such are specifically not granted by this approval and must be obtained by the Developer and/or his designee.

NOTE: SEE SHEET UC-04 FOR -SS1- ALIGNMENT

-SYSTEM-NUVE536-ut-UC18_psh.dgn