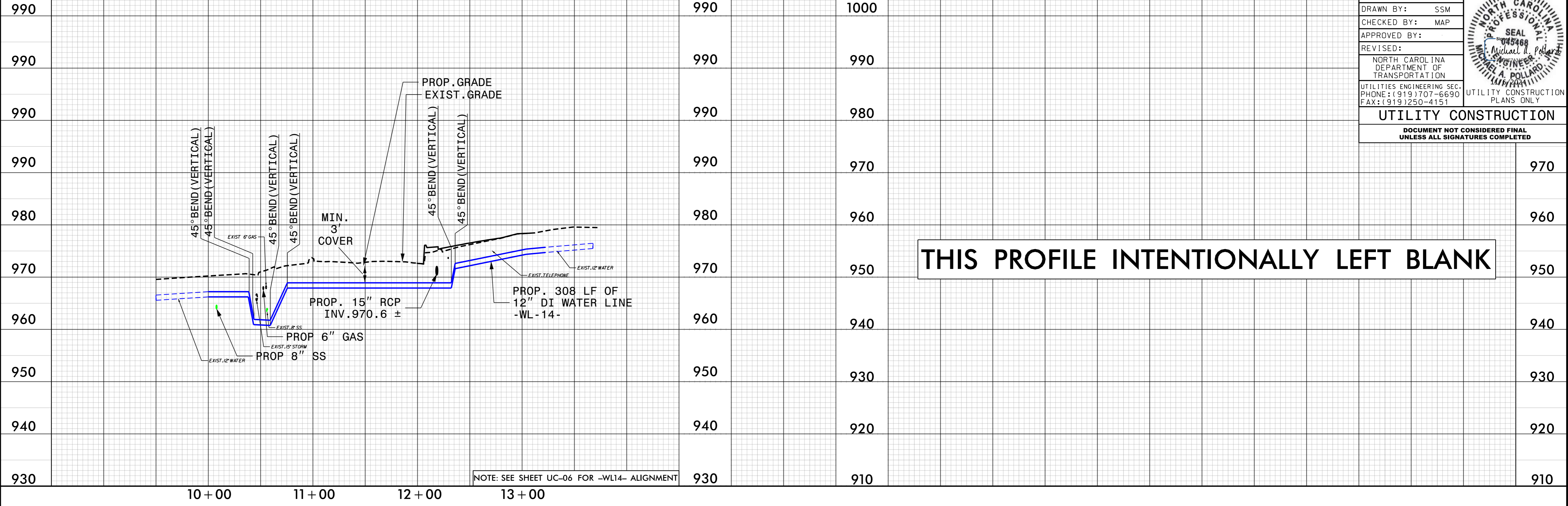


5/28/99

SCALE: 1" = 50' (HORZ.)  
1" = 5' (VERT.)

**-WL14-**



PROJECT REFERENCE NO. U-5536 SHEET NO. UC-16

DESIGNED BY: PRJ  
DRAWN BY: SSM  
CHECKED BY: MAP  
APPROVED BY:

REVISED:

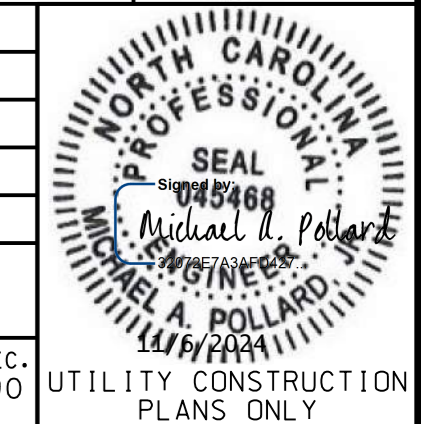
NORTH CAROLINA DEPARTMENT OF TRANSPORTATION

UTILITIES ENGINEERING SEC. PHONE: (919) 707-6690 FAX: (919) 250-4151

UTILITY CONSTRUCTION PLANS ONLY

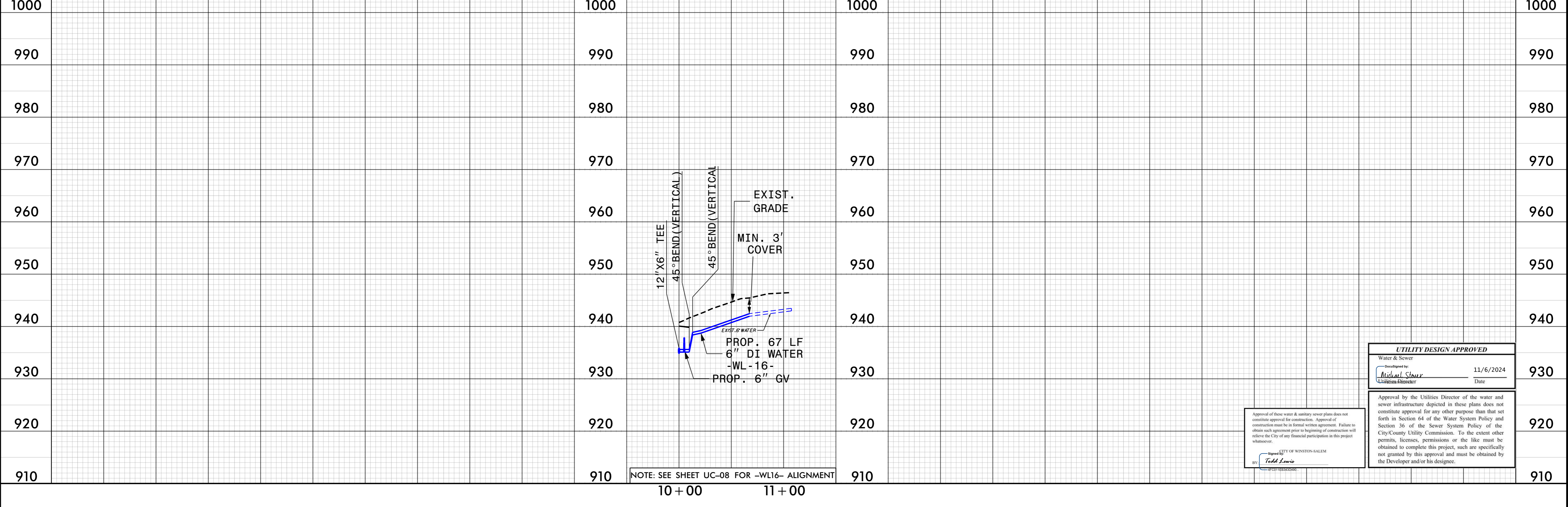
**UTILITY DESIGN APPROVED**

DOCUMENT NOT CONSIDERED FINAL UNLESS ALL SIGNATURES COMPLETED



SCALE: 1" = 50' (HORZ.)  
1" = 5' (VERT.)

**-WL16-**



**UTILITY DESIGN APPROVED**

Water & Sewer

Designed by: Michael Stover  
Checked by: [Signature]

Date: 11/6/2024

Approval of these water & sanitary sewer plans does not constitute approval for construction. Approval of construction must be in formal written agreement. Failure to obtain such agreement prior to beginning of construction will relieve the City of any financial participation in this project whatsoever.

CITY OF WINSTON-SALEM  
By: Todd Lewis

Approval by the Utilities Director of the water and sewer infrastructure depicted in these plans does not constitute approval for any other purpose than that set forth in Section 64 of the Water System Policy and Section 36 of the Sewer System Policy of the City/County Utility Commission. To the extent other permits, licenses, permissions or the like must be obtained to complete this project, such are specifically not granted by this approval and must be obtained by the Developer and/or his designee.

-SYSTEM- U:\E536-ut-UC16.psh.dgn