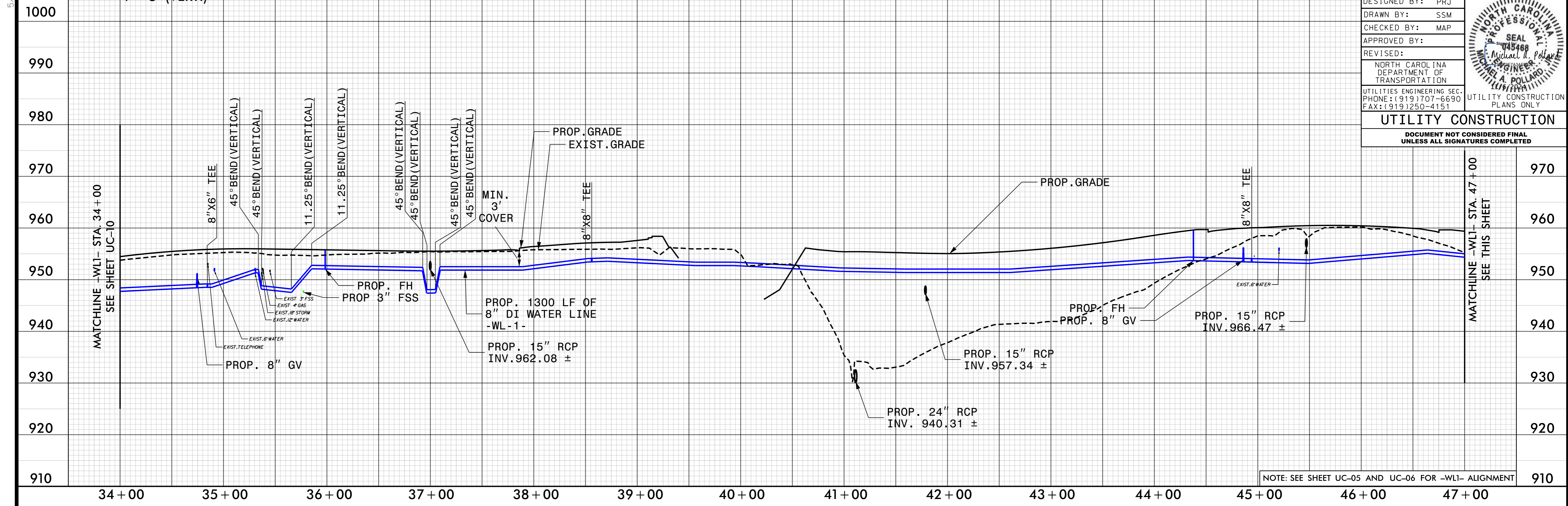


5/28/99

SCALE: 1" = 50' (HORZ.)
1" = 5' (VERT.)

-WL1-

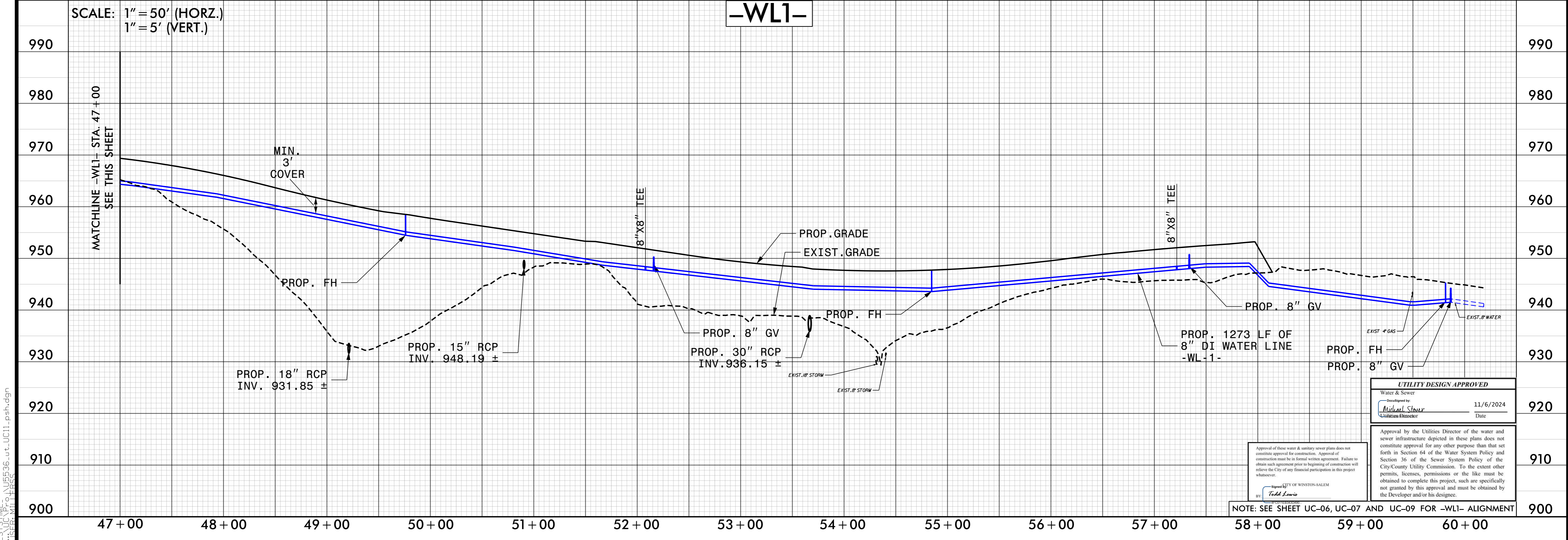
PROJECT REFERENCE NO.	UC-11
DESIGNED BY:	PRJ
DRAWN BY:	SSM
CHECKED BY:	MAP
APPROVED BY:	
REVISED:	
NORTH CAROLINA DEPARTMENT OF TRANSPORTATION	
UTILITIES ENGINEERING SEC. PHONE: (919) 707-6690 FAX: (919) 250-4151	
UTILITY CONSTRUCTION PLANS ONLY	
UTILITY CONSTRUCTION	
DOCUMENT NOT CONSIDERED FINAL UNLESS ALL SIGNATURES COMPLETED	



NOTE: SEE SHEET UC-05 AND UC-06 FOR -WL1- ALIGNMENT

SCALE: 1" = 50' (HORZ.)
1" = 5' (VERT.)

-WL1-



NOTE: SEE SHEET UC-06, UC-07 AND UC-09 FOR -WL1- ALIGNMENT

UTILITY DESIGN APPROVED

Water & Sewer

Designed by: Michael Stover 11/6/2024
Date

Approval by the Utilities Director of the water and sewer infrastructure depicted in these plans does not constitute approval for any other purpose than that set forth in Section 64 of the Water System Policy and Section 36 of the Sewer System Policy of the City/County Utility Commission. To the extent other permits, licenses, permissions or the like must be obtained to complete this project, such as specifically not granted by this approval and must be obtained by the Developer and/or his designee.

Approval of these water & sanitary sewer plans does not constitute approval for construction. Approval of construction must be in formal written agreement. Failure to obtain such agreement prior to beginning of construction will reflect the City of any financial participation in this project whatsoever.

BY: Todd Lewis CITY OF WINSTON-SALEM

-SYSTEM-NU5536-ut_UC11_psh.dgn