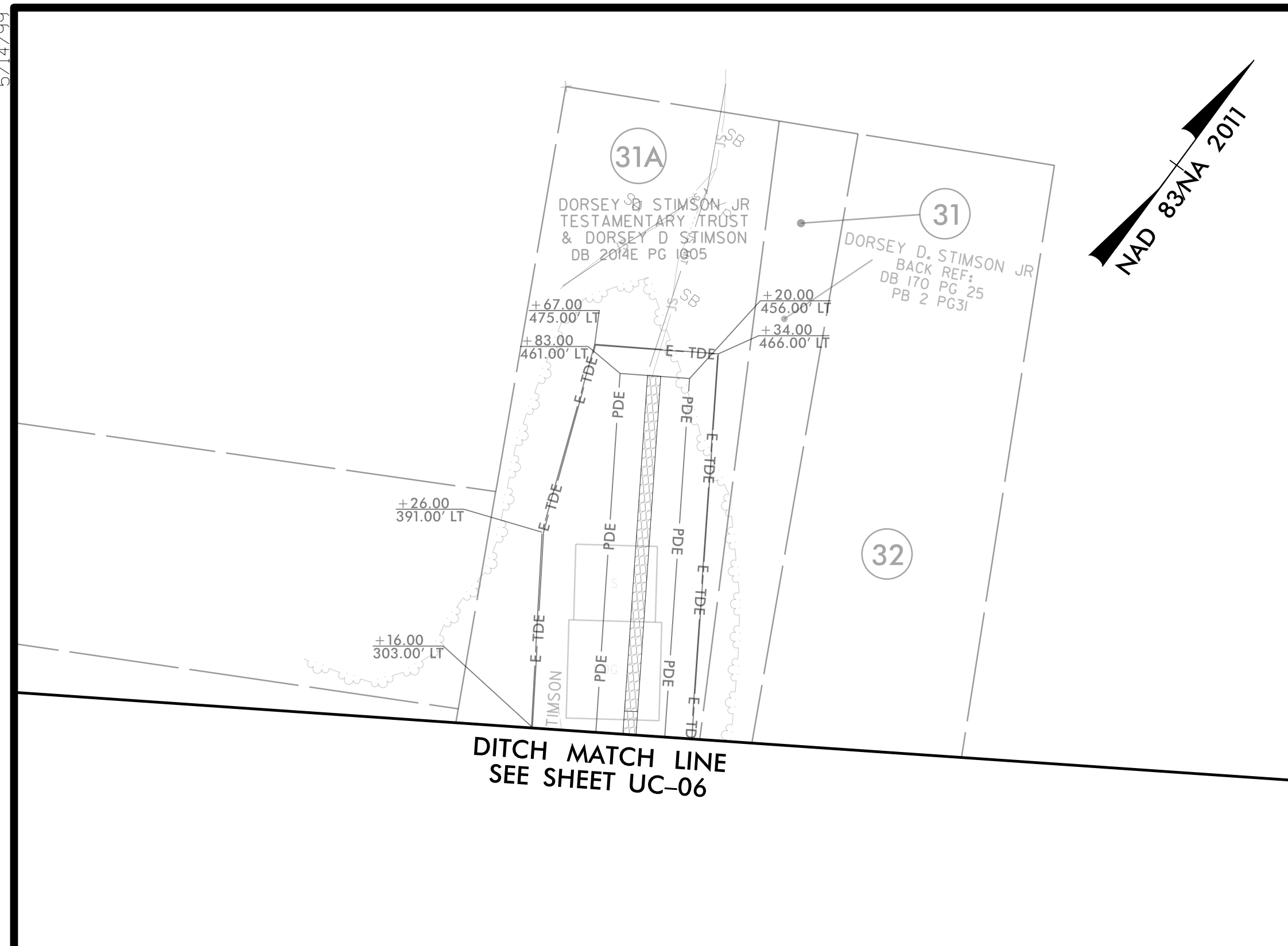


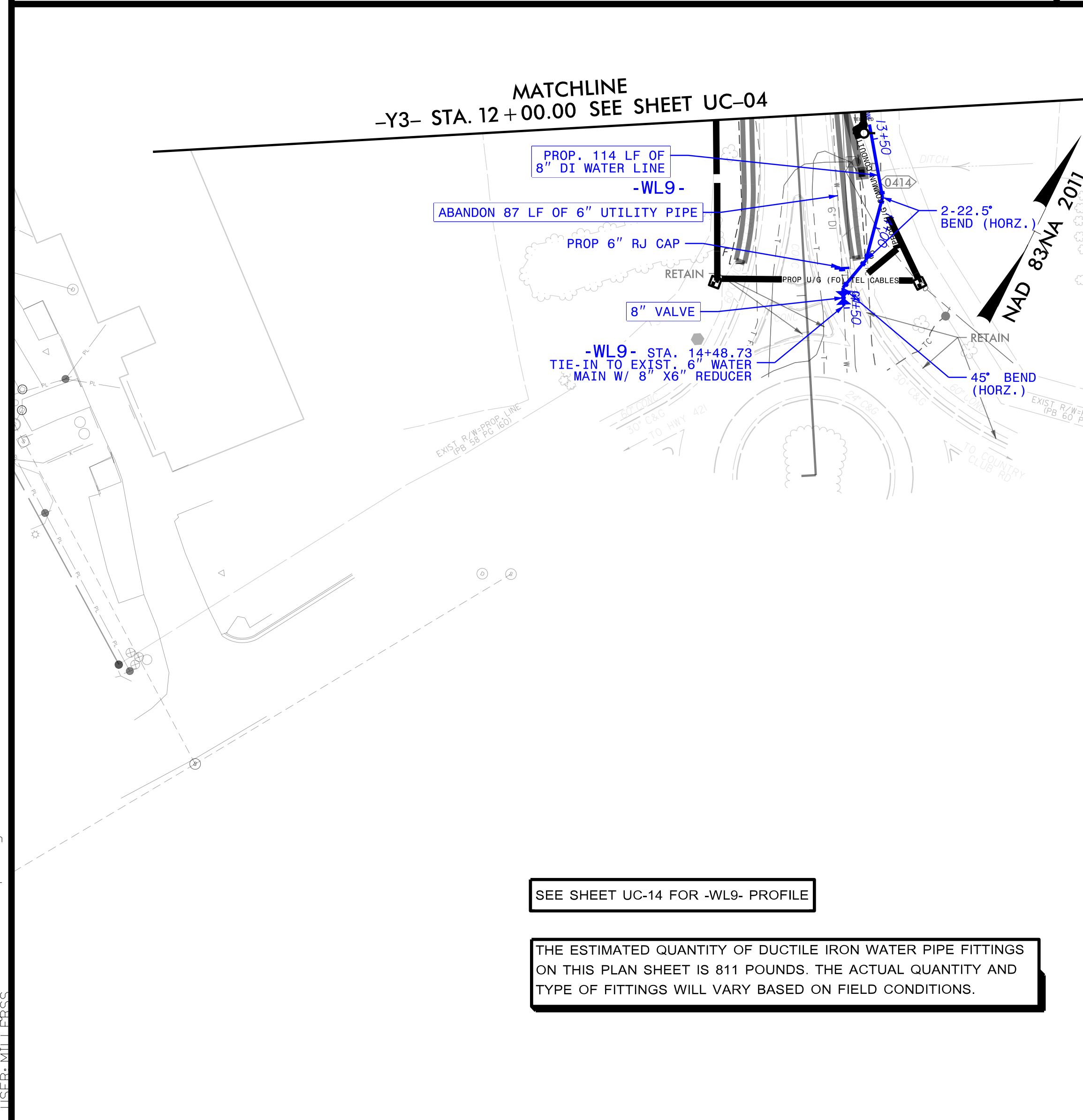
PROJECT REFERENCE NO.	SHEET NO.
U-5536	UC-09
DESIGNED BY: PRJ	
DRAWN BY: SSM	
CHECKED BY: MAP	
APPROVED BY:	
REVISED:	NORTH CAROLINA DEPARTMENT OF TRANSPORTATION
UTILITIES ENGINEERING SEC. PHONE: (919) 707-6690 FAX: (919) 250-4151	UTILITY CONSTRUCTION PLANS ONLY

UTILITY CONSTRUCTION

DOCUMENT NOT CONSIDERED FINAL UNLESS ALL SIGNATURES COMPLETED

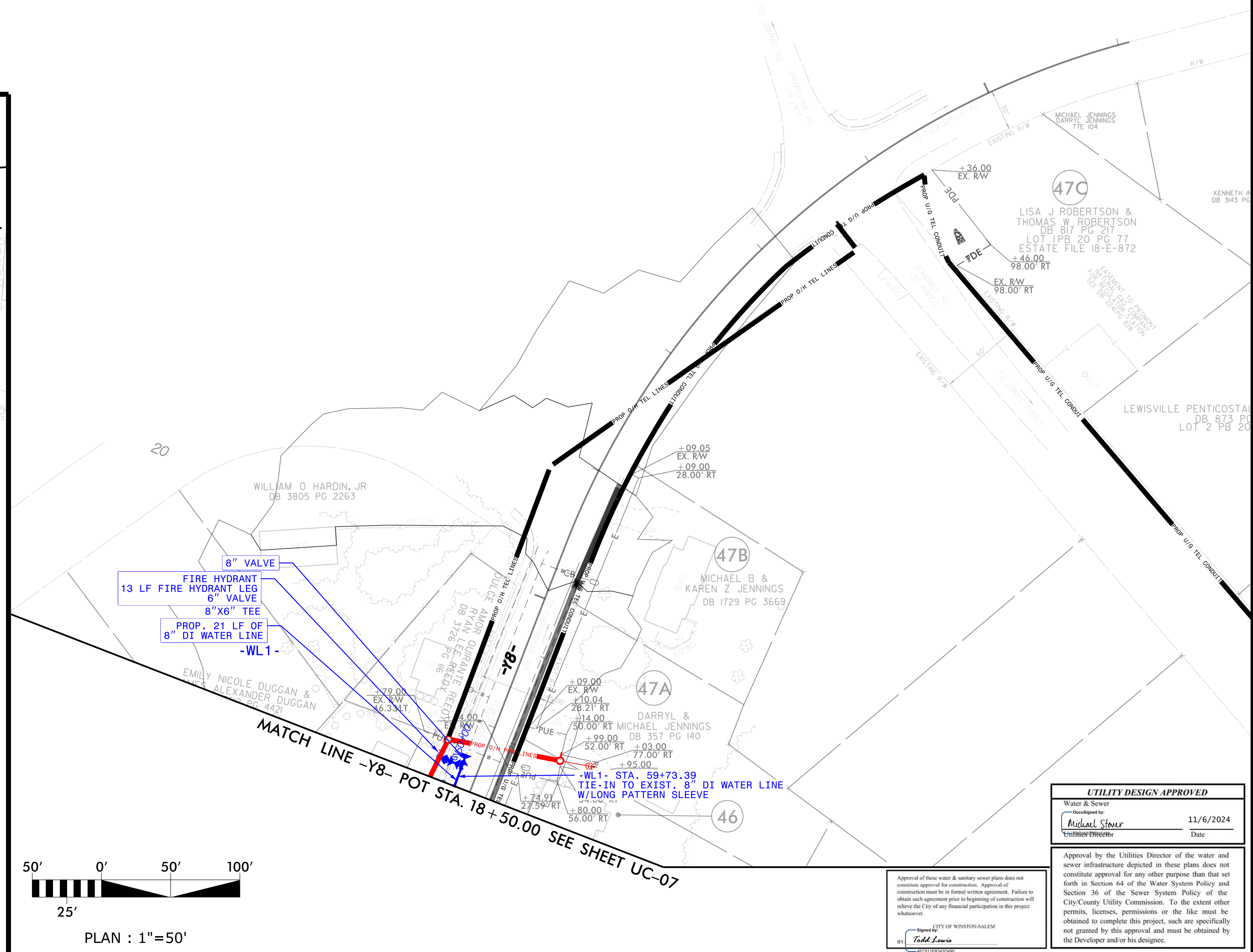
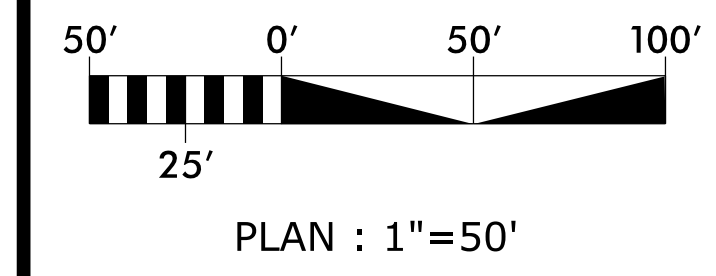


SEE SHEET UC-11 FOR -WL1- PROFILE



SEE SHEET UC-14 FOR -WL9- PROFILE

THE ESTIMATED QUANTITY OF DUCTILE IRON WATER PIPE FITTINGS ON THIS PLAN SHEET IS 811 POUNDS. THE ACTUAL QUANTITY AND TYPE OF FITTINGS WILL VARY BASED ON FIELD CONDITIONS.



UTILITY DESIGN APPROVED

Water & Sewer
 Designed by: Michael Stover
 Engineer/Designer
 Date: 11/6/2024

Approval by the Utilities Director of the water and sewer infrastructure depicted in these plans does not constitute approval for any other purpose than that set forth in Section 64 of the Water System Policy and Section 36 of the Sewer System Policy of the City/County Utility Commission. To the extent other permits, licenses, permissions or the like must be obtained to complete this project, such are specifically not granted by this approval and must be obtained by the Developer and/or his designee.

CITY OF WINSTON-SALEM
 Utilities Director
Todd Lewis

Approval of these water & sanitary sewer plans does not constitute approval for construction. Approval of construction must be in formal written agreement. Failure to obtain such agreement prior to beginning of construction will relieve the City of any financial participation in this project whatsoever.

SYSTEM: SUBE536.ut-UC09.psh.dgn