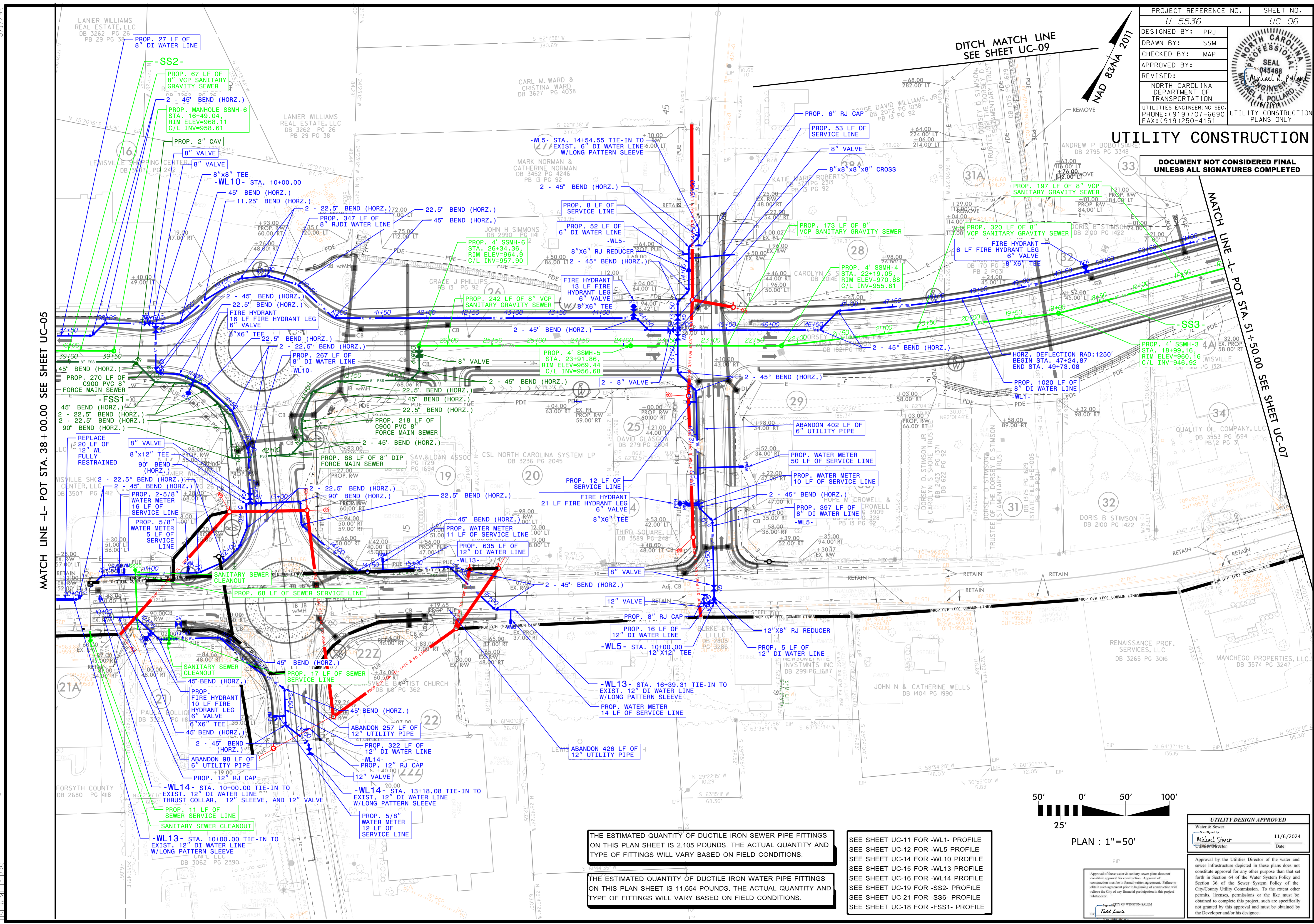


| | |
|--|-----------|
| PROJECT REFERENCE NO. | SHEET NO. |
| U-5536 | UC-06 |
| DESIGNED BY: PRJ | |
| DRAWN BY: SSM | |
| CHECKED BY: MAP | |
| APPROVED BY: | |
| REVISED: | |
| NORTH CAROLINA DEPARTMENT OF TRANSPORTATION UTILITIES ENGINEERING SEC. PHONE: (919) 707-6690 FAX: (919) 250-4151 UTILITY CONSTRUCTION PLANS ONLY | |

UTILITY CONSTRUCTION

DOCUMENT NOT CONSIDERED FINAL UNLESS ALL SIGNATURES COMPLETED

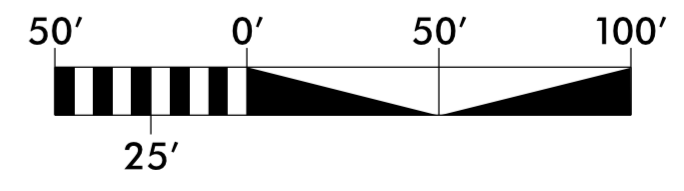


MATCH LINE -L- POT STA. 38 + 00.00 SEE SHEET UC-05

MATCH LINE 1 - POT STA. 51 + 50.00 SEE SHEET UC-07

DITCH MATCH LINE SEE SHEET UC-09

NAD 83 NA 2011



PLAN : 1"=50'

THE ESTIMATED QUANTITY OF DUCTILE IRON SEWER PIPE FITTINGS ON THIS PLAN SHEET IS 2,105 POUNDS. THE ACTUAL QUANTITY AND TYPE OF FITTINGS WILL VARY BASED ON FIELD CONDITIONS.

THE ESTIMATED QUANTITY OF DUCTILE IRON WATER PIPE FITTINGS ON THIS PLAN SHEET IS 11,654 POUNDS. THE ACTUAL QUANTITY AND TYPE OF FITTINGS WILL VARY BASED ON FIELD CONDITIONS.

SEE SHEET UC-11 FOR -WL1- PROFILE
 SEE SHEET UC-12 FOR -WL5 PROFILE
 SEE SHEET UC-14 FOR -WL10 PROFILE
 SEE SHEET UC-15 FOR -WL13 PROFILE
 SEE SHEET UC-16 FOR -WL14 PROFILE
 SEE SHEET UC-19 FOR -SS2- PROFILE
 SEE SHEET UC-21 FOR -SS6- PROFILE
 SEE SHEET UC-18 FOR -FSS1- PROFILE

UTILITY DESIGN APPROVED

Water & Sewer
 Michael Stover
 Utilities Director
 11/6/2024
 Date

Approval of these water & sanitary sewer plans does not constitute approval for construction. Approval of construction must be in formal written agreement. Failure to obtain such agreement prior to beginning of construction will relieve the City of any financial participation in this project whatsoever.

Approved by the City of Winston-Salem
 Todd Lewis
 City Engineer

8/17/19
S:\TME\5536-ut-UC06.esb.dgn
RELEASER: MTP/EGS