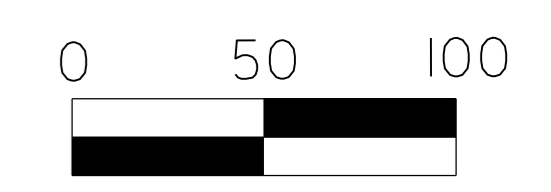


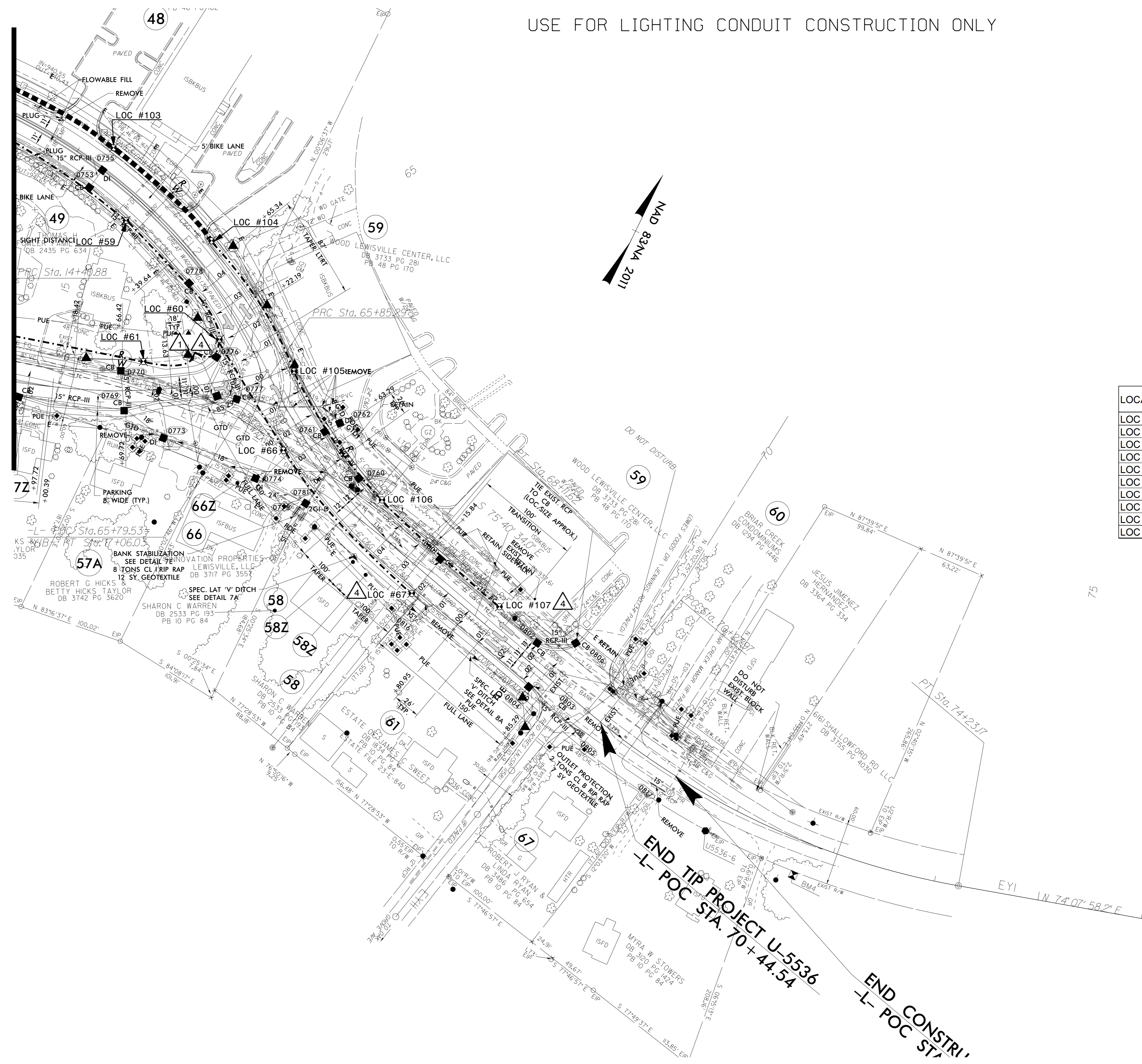
DOCUMENT NOT CONSIDERED FINAL
UNLESS ALL SIGNATURES COMPLETED



SEE SHEET "E-1" FOR
LEGEND & Δ NOTES

USE FOR LIGHTING CONDUIT CONSTRUCTION ONLY

MATCHLINE -L- STA. 62+30
SEE SHEET E-5



LOCATION	STATION	OFFSET
LOC #59	-L- STA. 63+79	22' RT
LOC #60	-L- STA. 65+30	25' RT
LOC #61	-Y1B- STA. 15+88	27' LT
LOC #66	-L- STA. 66+51	23' RT
LOC #67	-L- STA. 68+28	23' RT
LOC #103	-L- STA. 61+58	24' LT
LOC #104	-L- STA. 64+49	23' LT
LOC #105	-L- STA. 65+91	23' LT
LOC #106	-L- STA. 67+46	23' LT
LOC #107	-L- STA. 69+00	22' LT

2			
1			
Rev.	Date	Description	Approved
NORTH CAROLINA DEPARTMENT OF TRANSPORTATION ROADWAY DESIGN LIGHTING/ELECTRICAL SECTION CONDUIT LAYOUT GREAT WAGON ROAD SHEET 5 OF 5 FORSYTH COUNTY Drawn By: RGH Approved By: <i>[Signature]</i> Dwg No.:			

I4-NOV-2024 17:28 Projects\U5536 - Great Wagon Rd\U5536_LE.conduit.psh_E6.dgn
rghall