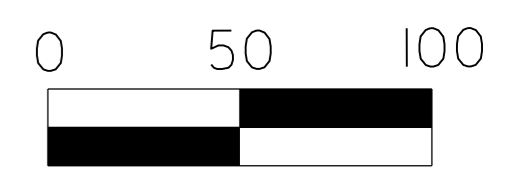




DocuSign by Nathan Dominguez 11/14/2024

DOCUMENT NOT CONSIDERED FINAL UNLESS ALL SIGNATURES COMPLETED



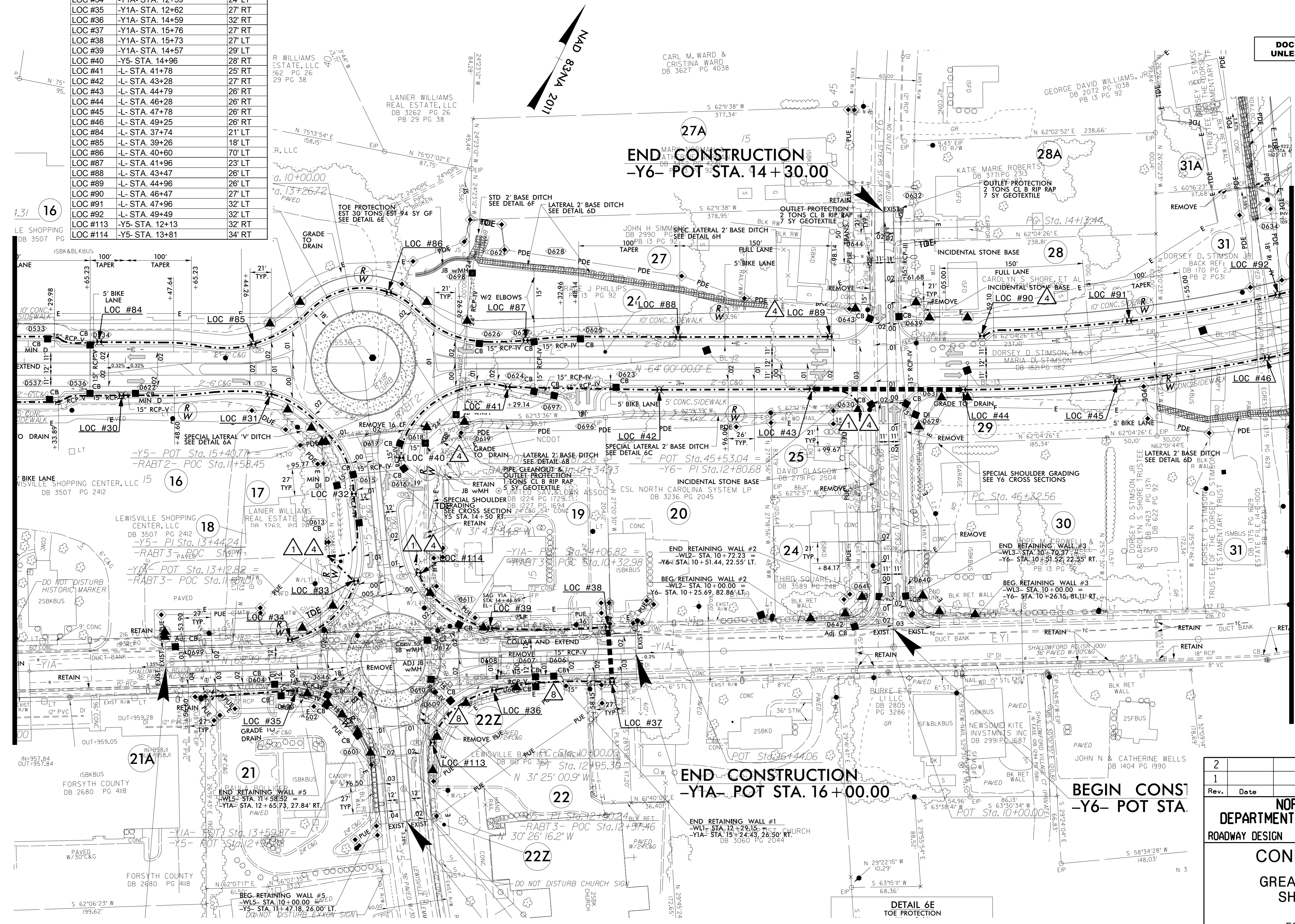
SEE SHEET "E-1" FOR LEGEND & Δ NOTES

USE FOR LIGHTING CONDUIT CONSTRUCTION ONLY

LOCATION	STATION	OFFSET
LOC #30	-L- STA. 37+96	32' RT
LOC #31	-L- STA. 39+42	31' RT
LOC #32	-Y5- STA. 14+65	22' LT
LOC #33	-Y5- STA. 13+79	29' LT
LOC #34	-Y1A- STA. 12+59	24' LT
LOC #35	-Y1A- STA. 12+62	27' RT
LOC #36	-Y1A- STA. 14+59	32' RT
LOC #37	-Y1A- STA. 15+76	27' RT
LOC #38	-Y1A- STA. 15+73	27' LT
LOC #39	-Y1A- STA. 14+57	29' LT
LOC #40	-Y5- STA. 14+96	28' RT
LOC #41	-L- STA. 41+78	25' RT
LOC #42	-L- STA. 43+28	27' RT
LOC #43	-L- STA. 44+79	26' RT
LOC #44	-L- STA. 46+28	26' RT
LOC #45	-L- STA. 47+78	26' RT
LOC #46	-L- STA. 49+25	26' RT
LOC #84	-L- STA. 37+74	21' LT
LOC #85	-L- STA. 39+26	18' LT
LOC #86	-L- STA. 40+60	70' LT
LOC #87	-L- STA. 41+96	23' LT
LOC #88	-L- STA. 43+47	26' LT
LOC #89	-L- STA. 44+96	26' LT
LOC #90	-L- STA. 46+47	27' LT
LOC #91	-L- STA. 47+96	32' LT
LOC #92	-L- STA. 49+49	32' LT
LOC #113	-Y5- STA. 12+13	32' RT
LOC #114	-Y5- STA. 13+81	34' RT

MATCHLINE -L- STA. 36+90 SEE SHEET E-3

MATCHLINE -L- STA. 49+56 SEE SHEET E-5



I:\Projects\2024\17125 Projects\U5536 - Great Wagon Rd\U5536\_LE\_conduit.psh.E4.dgn  
11/14/2024 11:25 AM  
rg

Rev.	Date	Description	Approved
2			
1			

**NORTH CAROLINA DEPARTMENT OF TRANSPORTATION**  
ROADWAY DESIGN LIGHTING/ELECTRICAL SECTION

**CONDUIT LAYOUT**  
GREAT WAGON ROAD  
SHEET 3 OF 5

FORSYTH COUNTY

Drawn By: RGH	Approved By: [Signature]	Dwg No.:
---------------	--------------------------	----------

DETAIL 6E TOE PROTECTION