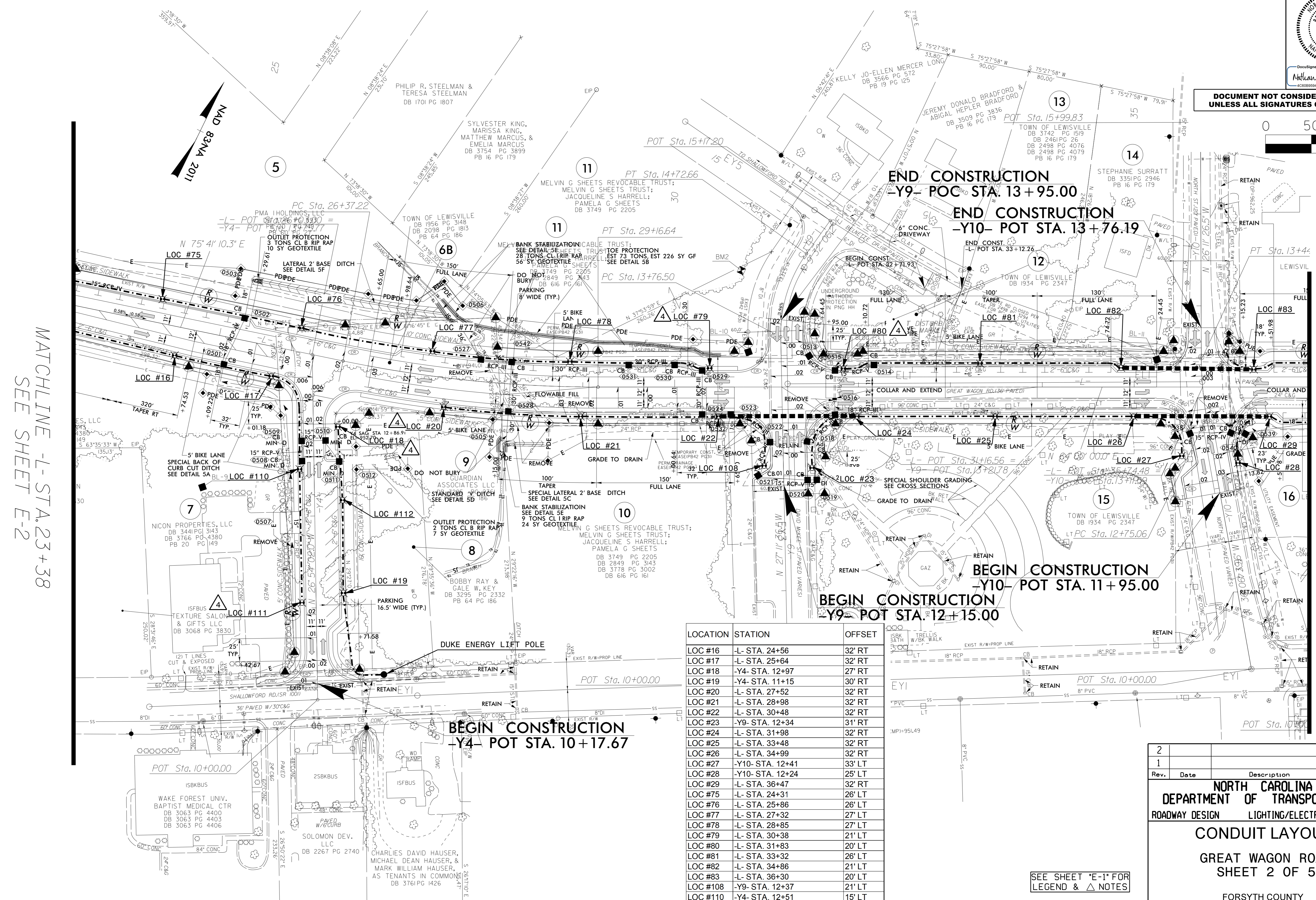
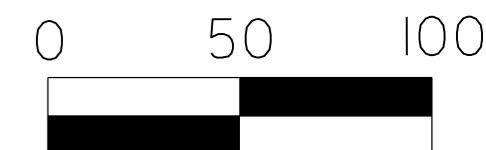


USE FOR LIGHTING CONDUIT CONSTRUCTION ONLY



DocuSigned by:
Nathan Dominguez 04/2024
K020898A2844

DOCUMENT NOT CONSIDERED FINAL
UNLESS ALL SIGNATURES COMPLETED



MATCHLINE -L- STA. 23+38
SEE SHEET E-2

MATCHLINE -L- STA. 36+90
SEE SHEET E-4

LOCATION	STATION	OFFSET
LOC #16	-L- STA. 24+56	32' RT
LOC #17	-L- STA. 25+64	32' RT
LOC #18	-Y4- STA. 12+97	27' RT
LOC #19	-Y4- STA. 11+15	30' RT
LOC #20	-L- STA. 27+52	32' RT
LOC #21	-L- STA. 28+98	32' RT
LOC #22	-L- STA. 30+48	32' RT
LOC #23	-Y9- STA. 12+34	31' RT
LOC #24	-L- STA. 31+98	32' RT
LOC #25	-L- STA. 33+48	32' RT
LOC #26	-L- STA. 34+99	32' RT
LOC #27	-Y10- STA. 12+41	33' LT
LOC #28	-Y10- STA. 12+24	25' LT
LOC #29	-L- STA. 36+47	32' RT
LOC #75	-L- STA. 24+31	26' LT
LOC #76	-L- STA. 25+86	26' LT
LOC #77	-L- STA. 27+32	27' LT
LOC #78	-L- STA. 28+85	27' LT
LOC #79	-L- STA. 30+38	21' LT
LOC #80	-L- STA. 31+83	20' LT
LOC #81	-L- STA. 33+32	26' LT
LOC #82	-L- STA. 34+86	21' LT
LOC #83	-L- STA. 36+30	20' LT
LOC #108	-Y9- STA. 12+37	21' LT
LOC #110	-Y4- STA. 12+51	15' LT
LOC #111	-Y4- STA. 11+06	15' LT
LOC #112	-Y4- STA. 12+17	31' RT

SEE SHEET "E-1" FOR
LEGEND & △ NOTES

2			
1			
Rev.	Date	Description	Approved
NORTH CAROLINA DEPARTMENT OF TRANSPORTATION ROADWAY DESIGN LIGHTING/ELECTRICAL SECTION CONDUIT LAYOUT GREAT WAGON ROAD SHEET 2 OF 5 FORSYTH COUNTY			
Drawn By:	RGH	Approved By:	<i>MD</i>
Dwg No.:			

14-NOV-2024 17:30 Projects\U5536 - Great Wagon Rd\U5536_LE_conduit.psh.E3.dgn
T:\Projects\U5536 - Great Wagon Rd\U5536_LE_conduit.psh.E3.dgn
rgHall