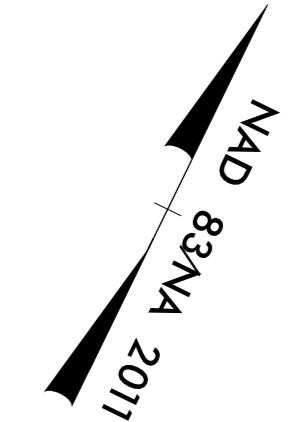
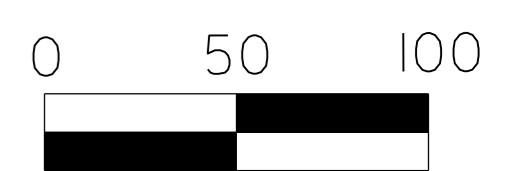


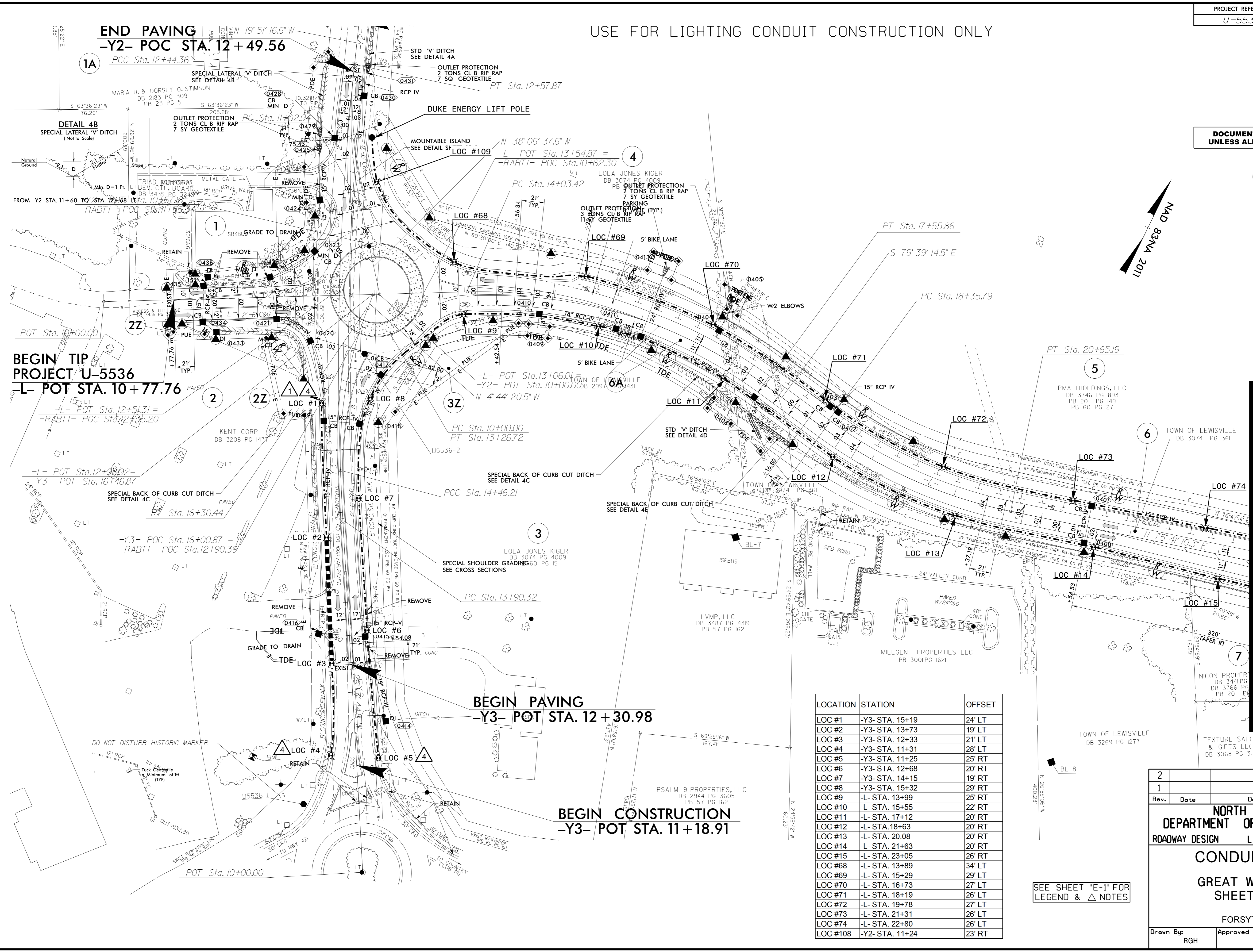


DocuSigned by:
Nathan Dominguez 04/20/24
4208868A264A

**DOCUMENT NOT CONSIDERED FINAL
UNLESS ALL SIGNATURES COMPLETED**



USE FOR LIGHTING CONDUIT CONSTRUCTION ONLY



MATCHLINE - L- STA. 23+38
SEE SHEET E-3

LOCATION	STATION	OFFSET
LOC #1	-Y3- STA. 15+19	24' LT
LOC #2	-Y3- STA. 13+73	19' LT
LOC #3	-Y3- STA. 12+33	21' LT
LOC #4	-Y3- STA. 11+31	28' LT
LOC #5	-Y3- STA. 11+25	25' RT
LOC #6	-Y3- STA. 12+68	20' RT
LOC #7	-Y3- STA. 14+15	19' RT
LOC #8	-Y3- STA. 15+32	29' RT
LOC #9	-L- STA. 13+99	25' RT
LOC #10	-L- STA. 15+55	22' RT
LOC #11	-L- STA. 17+12	20' RT
LOC #12	-L- STA. 18+63	20' RT
LOC #13	-L- STA. 20.08	20' RT
LOC #14	-L- STA. 21+63	20' RT
LOC #15	-L- STA. 23+05	26' RT
LOC #68	-L- STA. 13+89	34' LT
LOC #69	-L- STA. 15+29	29' LT
LOC #70	-L- STA. 16+73	27' LT
LOC #71	-L- STA. 18+19	26' LT
LOC #72	-L- STA. 19+78	27' LT
LOC #73	-L- STA. 21+31	26' LT
LOC #74	-L- STA. 22+80	26' LT
LOC #108	-Y2- STA. 11+24	23' RT

SEE SHEET "E-1" FOR
LEGEND & △ NOTES

2			
1			
Rev.	Date	Description	Approved
NORTH CAROLINA DEPARTMENT OF TRANSPORTATION ROADWAY DESIGN LIGHTING/ELECTRICAL SECTION CONDUIT LAYOUT GREAT WAGON ROAD SHEET 1 OF 5 FORSYTH COUNTY			
Drawn By:	RGH	Approved By:	[Signature]
Dwg No.:			

I4-NOV-2024 17:26 Projects\U5536 - Great Wagon Rd\U5536_LE_conduit.psh_E2.dgn
T:\Projects\U5536 - Great Wagon Rd\U5536_LE_conduit.psh_E2.dgn