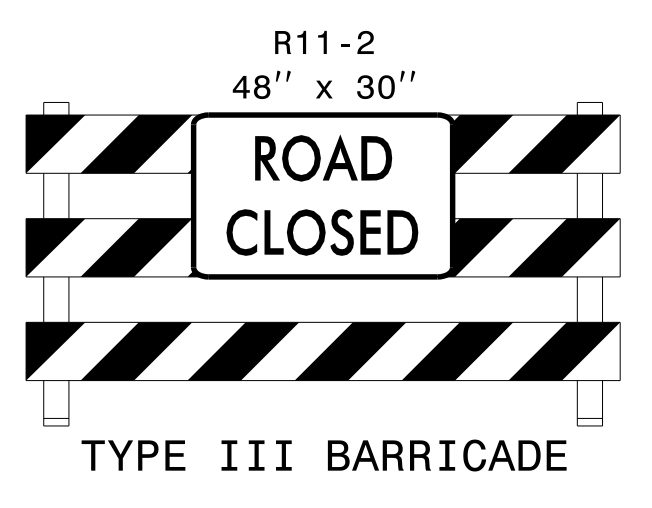
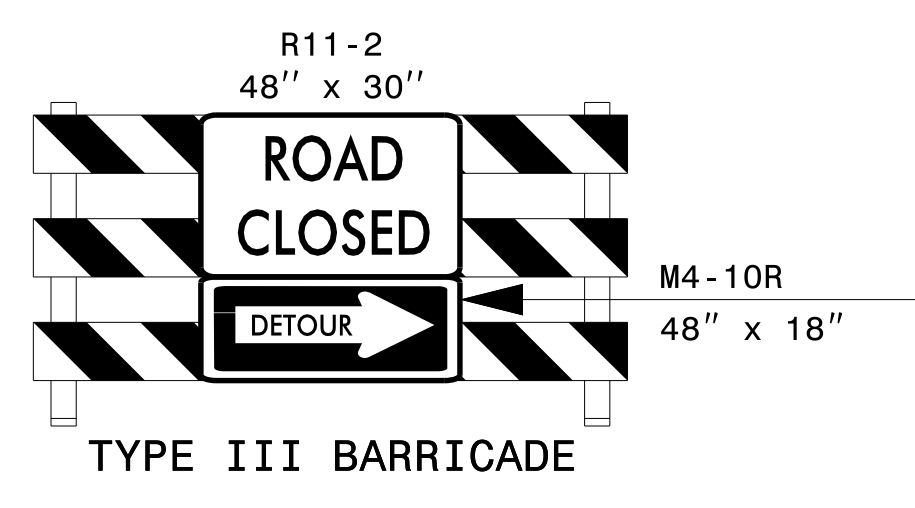


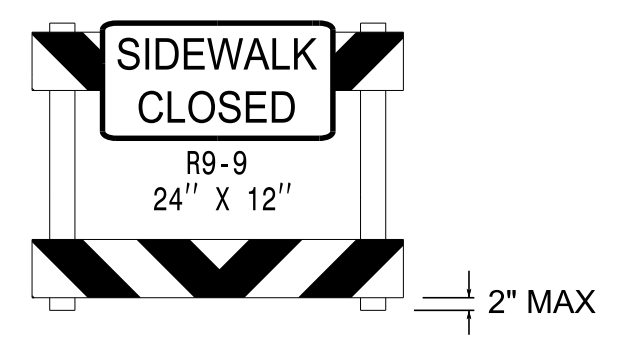
A



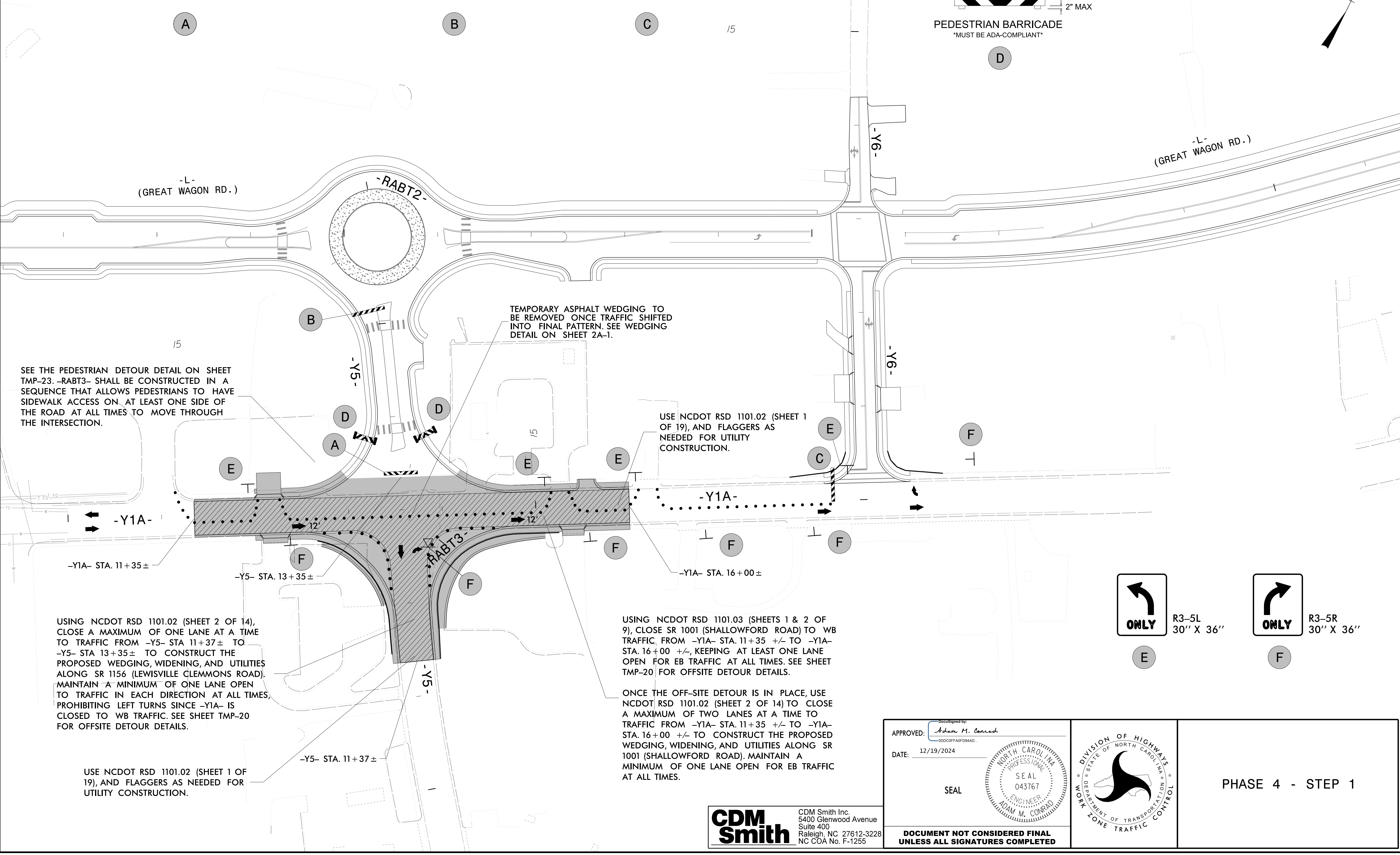
B



C



D



SEE THE PEDESTRIAN DETOUR DETAIL ON SHEET TMP-23. -RABT3- SHALL BE CONSTRUCTED IN A SEQUENCE THAT ALLOWS PEDESTRIANS TO HAVE SIDEWALK ACCESS ON AT LEAST ONE SIDE OF THE ROAD AT ALL TIMES TO MOVE THROUGH THE INTERSECTION.

TEMPORARY ASPHALT WEDGING TO BE REMOVED ONCE TRAFFIC SHIFTED INTO FINAL PATTERN. SEE WEDGING DETAIL ON SHEET 2A-1.

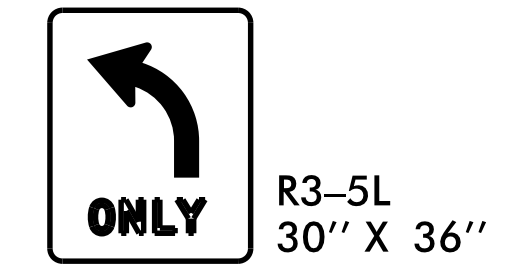
USE NCDOT RSD 1101.02 (SHEET 1 OF 19), AND FLAGGERS AS NEEDED FOR UTILITY CONSTRUCTION.

USING NCDOT RSD 1101.02 (SHEET 2 OF 14), CLOSE A MAXIMUM OF ONE LANE AT A TIME TO TRAFFIC FROM -Y5- STA 11+37± TO -Y5- STA 13+35± TO CONSTRUCT THE PROPOSED WEDGING, WIDENING, AND UTILITIES ALONG SR 1156 (LEWISVILLE CLEMMONS ROAD). MAINTAIN A MINIMUM OF ONE LANE OPEN TO TRAFFIC IN EACH DIRECTION AT ALL TIMES, PROHIBITING LEFT TURNS SINCE -Y1A- IS CLOSED TO WB TRAFFIC. SEE SHEET TMP-20 FOR OFFSITE DETOUR DETAILS.

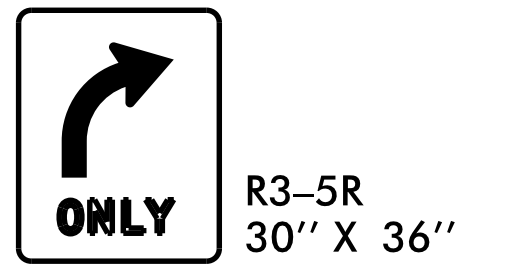
USING NCDOT RSD 1101.03 (SHEETS 1 & 2 OF 9), CLOSE SR 1001 (SHALLOWFORD ROAD) TO WB TRAFFIC FROM -Y1A- STA. 11+35 ±/- TO -Y1A- STA. 16+00 ±/-, KEEPING AT LEAST ONE LANE OPEN FOR EB TRAFFIC AT ALL TIMES. SEE SHEET TMP-20 FOR OFFSITE DETOUR DETAILS.

ONCE THE OFF-SITE DETOUR IS IN PLACE, USE NCDOT RSD 1101.02 (SHEET 2 OF 14) TO CLOSE A MAXIMUM OF TWO LANES AT A TIME TO TRAFFIC FROM -Y1A- STA. 11+35 ±/- TO -Y1A- STA. 16+00 ±/- TO CONSTRUCT THE PROPOSED WEDGING, WIDENING, AND UTILITIES ALONG SR 1001 (SHALLOWFORD ROAD). MAINTAIN A MINIMUM OF ONE LANE OPEN FOR EB TRAFFIC AT ALL TIMES.

USE NCDOT RSD 1101.02 (SHEET 1 OF 19), AND FLAGGERS AS NEEDED FOR UTILITY CONSTRUCTION.



E



F

12/5/2024  
pw:\cdmsmith\az02-pw.bentley.com\pw-p\in\Documents\117240\23192\10 Transportation\04 Client Folder Structure\U5536\TrafficControl\TCP\U5536\_TC\_TMP19.dgn  
User:ICNRADAM

CDM Smith Inc.  
5400 Glenwood Avenue  
Suite 400  
Raleigh, NC 27612-3228  
NC COA No. F-1255

APPROVED: *Adam M. Conrad*  
DATE: 12/19/2024

SEAL

DIVISION OF HIGHWAYS  
STATE OF NORTH CAROLINA  
DEPARTMENT OF TRANSPORTATION  
WORK ZONE TRAFFIC CONTROL

PHASE 4 - STEP 1

DOCUMENT NOT CONSIDERED FINAL  
UNLESS ALL SIGNATURES COMPLETED