

Location and Surveys

PROJECT SURVEYOR

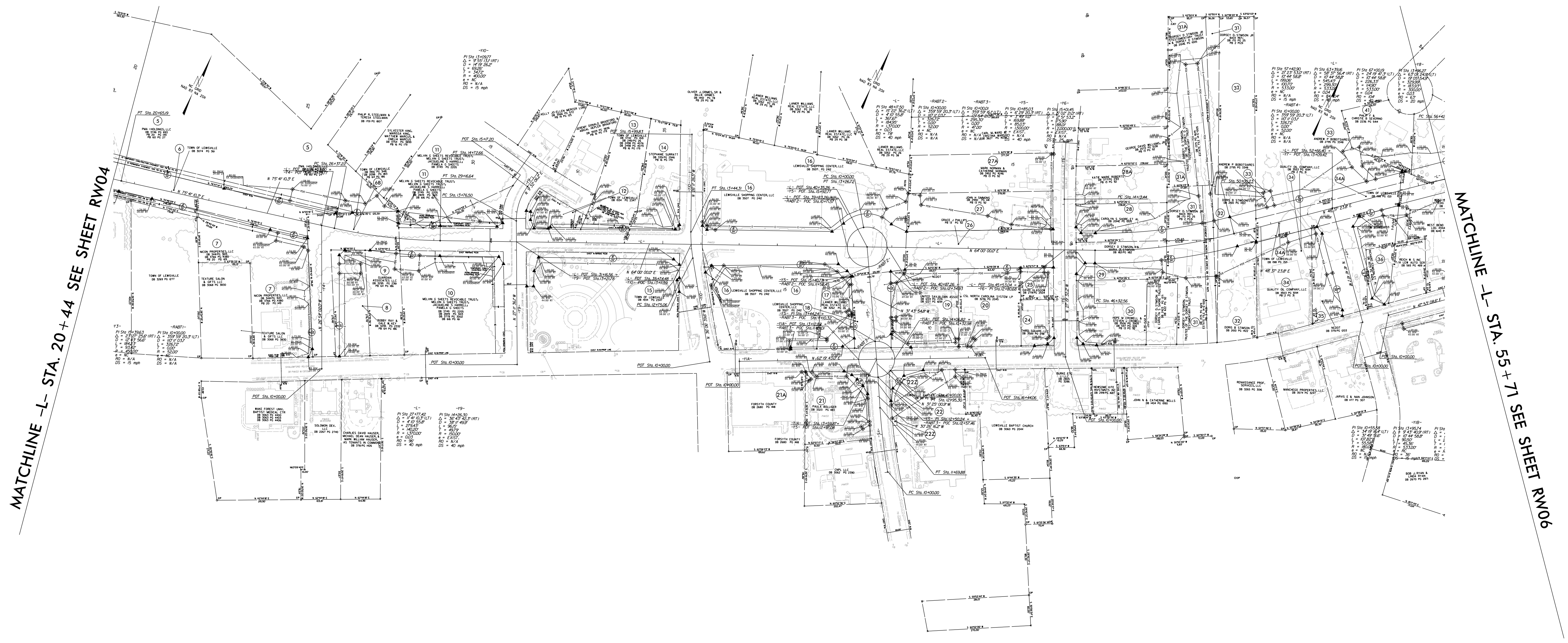
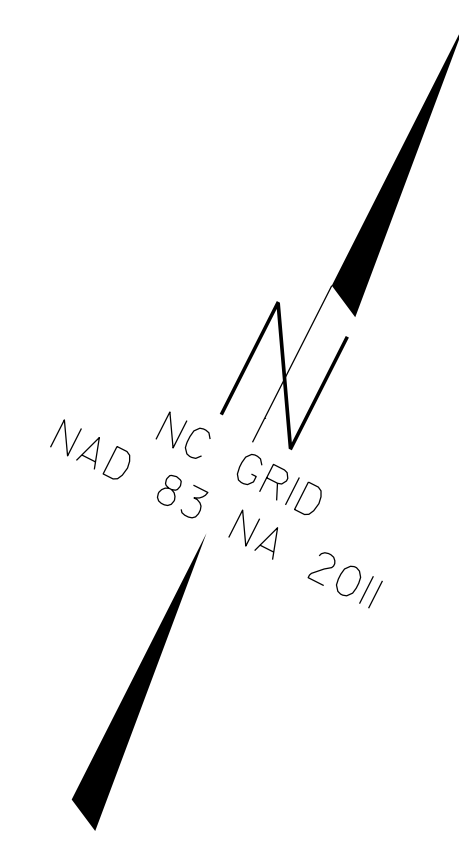


DOCUMENT NOT CONSIDERED FINAL UNLESS ALL SIGNATURES COMPLETED

I, Michael L. Motsinger, certify that the right of way and permanent easement monumentation for this project shown herein was completed under my direct and responsible charge from an actual survey made under my supervision; that all horizontal closures had a minimum ratio of precision of 1:10,000 (Class A). Field work was performed from April 2023 to October 2024, and all coordinates are based on NAD83/2011; That this survey was performed to meet the requirements of 21NCAC 56.1600 as applicable.

This 7th day of November, 2024.

DocuSigned by:
Michael L. Motsinger
 FDB8F7E23C40E
 Professional Land Surveyor L-3877



REVISIONS

MATCHLINE -L- STA. 20 + 44 SEE SHEET RW04

MATCHLINE -L- STA. 55 + 71 SEE SHEET RW06

NOTES:

1. IF FURTHER INFORMATION REGARDING PROJECT CONTROL IS NEEDED PLEASE CONTACT THE LOCATION AND SURVEYS UNIT.
2. PROJECT CONTROL WAS ESTABLISHED USING GNSS, THE GLOBAL NAVIGATION SATELLITE SYSTEM.
3. RIGHT OF WAY MONUMENTATION ESTABLISHED _____ TO _____.