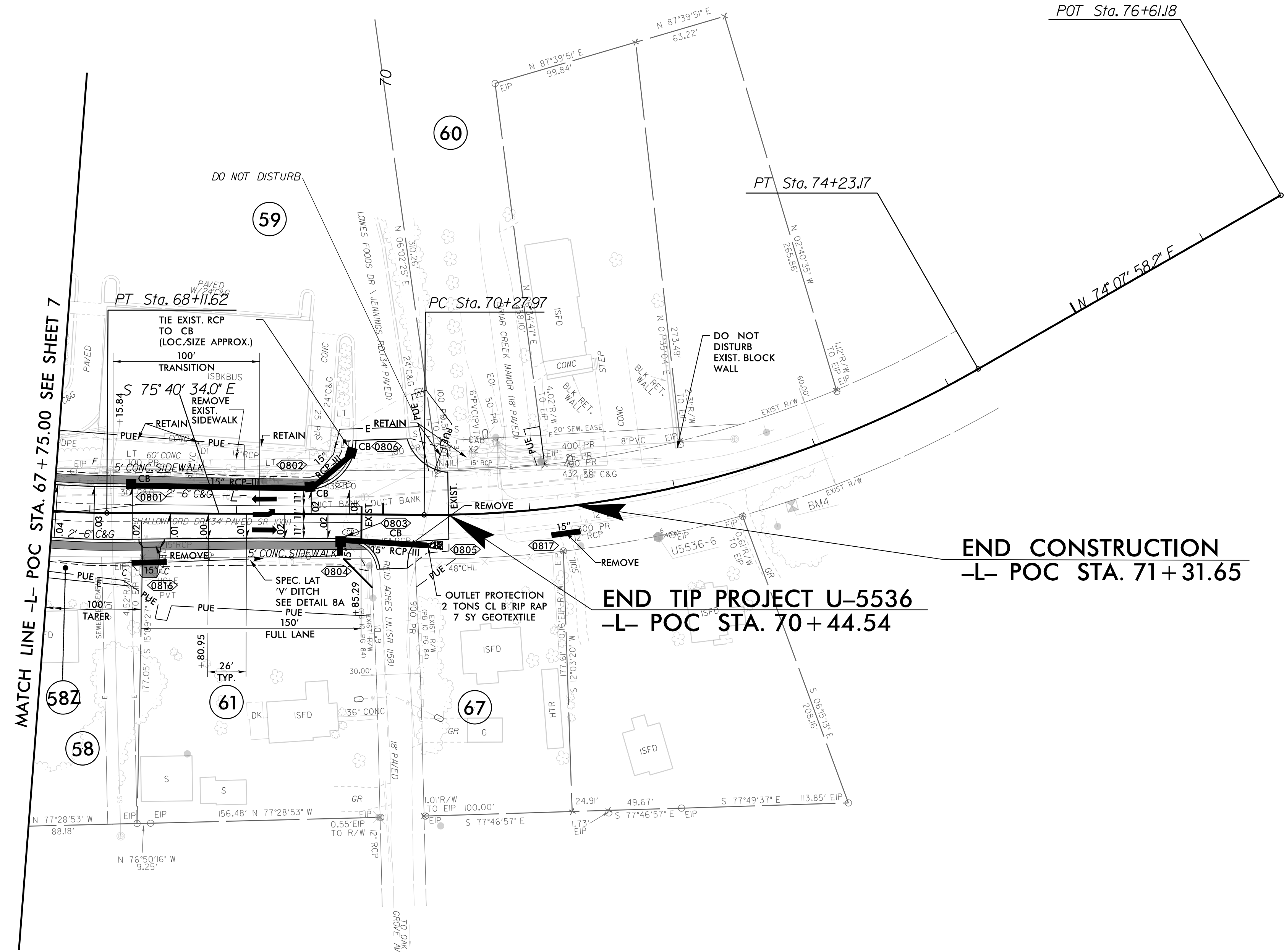
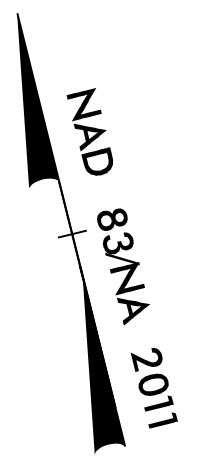


5/14/2019

PROJECT REFERENCE NO. <i>U-5536</i>		SHEET NO. <i>8</i>	
RW SHEET NO.			
ROADWAY DESIGN ENGINEER		HYDRAULICS ENGINEER	
<p>CONSTRUCTION NOT CONSIDERED FINAL UNLESS ALL SIGNATURES COMPLETED</p>			



MATCH LINE -L- POC STA. 67 + 75.00 SEE SHEET 7

END CONSTRUCTION
-L- POC STA. 71 + 31.65

END TIP PROJECT U-5536
-L- POC STA. 70 + 44.54

-L-	
PI Sta 67+00.19	PI Sta 72+30.27
$\Delta = 24'19" 47.3" (LT)$	$\Delta = 30'11" 27.7" (LT)$
$D = 10' 44' 58.8"$	$D = 7' 38' 22.0"$
$L = 226.33'$	$L = 395.20'$
$T = 114.90'$	$T = 202.30'$
$R = 533.00'$	$R = 750.00'$
$e = 0.04$	$e = EXIST.$
$RO = 104'$	$RO = N/A$
$DS = 40 \text{ mph}$	$DS = 40 \text{ mph}$

- NOTES:
1. REPLACE ALL EXISTING DRIVEWAYS WITH LIKE MATERIAL.
 2. PROPOSED DRIVEWAY WIDTHS SHALL MATCH EXISTING DRIVEWAY WIDTH.

LEGEND

CONCRETE SW/DRWY/ISLAND

SEE SHEET 2D-1 FOR DRAINAGE DETAILS
SEE SHEET 12 FOR -L- PROFILE

-SYTIME U5536_Rdy_psh_08.dgn
LISTED: 10/10/2019