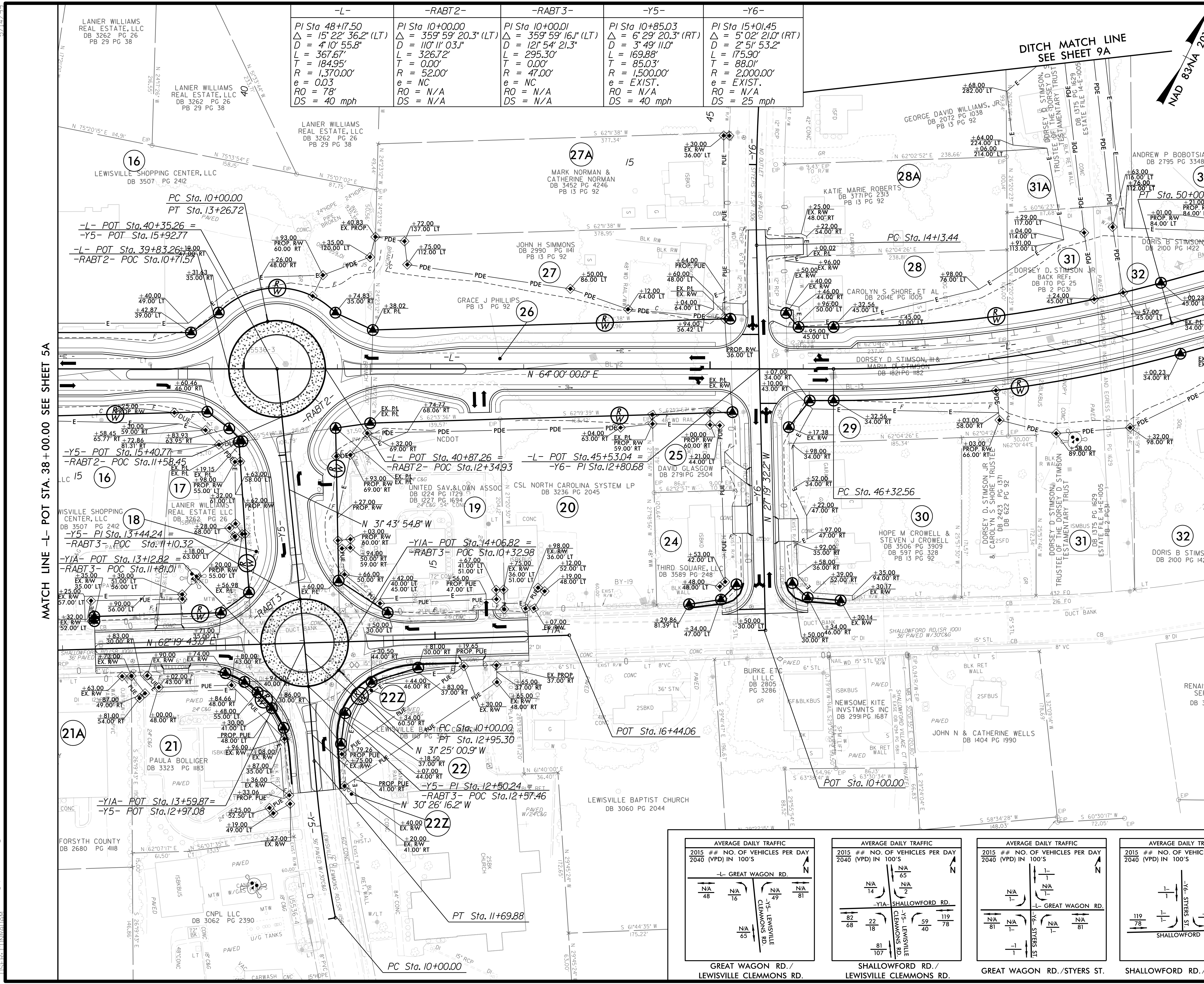


5/14/2019



-L-	-RABT2-	-RABT3-	-Y5-	-Y6-
PI Sta 48+17.50 Δ = 15° 22' 36.2" (LT) D = 4' 10" 55.8" L = 367.67' T = 184.95' R = 1,370.00' e = 0.03 RO = 78' DS = 40 mph	PI Sta 10+00.00 Δ = 359° 59' 20.3" (LT) D = 110' 11" 03.1" L = 326.72' T = 0.00' R = 52.00' e = NC RO = N/A DS = N/A	PI Sta 10+00.01 Δ = 359° 59' 16.1" (LT) D = 121' 54" 21.3" L = 295.30' T = 0.00' R = 52.00' e = NC RO = N/A DS = N/A	PI Sta 10+85.03 Δ = 6° 29' 20.3" (RT) D = 3' 49" 11.0" L = 169.88' T = 85.03' R = 1,500.00' e = EXIST. RO = N/A DS = 40 mph	PI Sta 15+01.45 Δ = 5° 02' 21.0" (RT) D = 2' 51" 53.2" L = 175.90' T = 88.01' R = 2,000.00' e = EXIST. RO = N/A DS = 25 mph

PROJECT REFERENCE NO. U-5536  
SHEET NO. 6A

ROADWAY DESIGN ENGINEER

SEAL 033400

CDM Smith  
27612-3228  
NC CDA No. F-1256

DOCUMENT NOT CONSIDERED FINAL UNLESS ALL SIGNATURES COMPLETED

MATCH LINE -L- POT STA. 38 + 00.00 SEE SHEET 5A

MATCH LINE -L- POT STA. 51 + 500.00 SEE SHEET 7A

SYSTEM: 15536\_Rdy\_psh\_06A.dgn  
USER: JTB

AVERAGE DAILY TRAFFIC  
2015 ## NO. OF VEHICLES PER DAY 2040 (VPD) IN 100'S

-L- GREAT WAGON RD.		-Y5- LEWISVILLE RD.	
NA/48	NA/16	NA/49	NA/81
GREAT WAGON RD. / LEWISVILLE CLEMMONS RD.			

AVERAGE DAILY TRAFFIC  
2015 ## NO. OF VEHICLES PER DAY 2040 (VPD) IN 100'S

-Y6- SHALLOWFORD RD.		-Y5- LEWISVILLE RD.	
NA/14	NA/2	59/40	119/78
SHALLOWFORD RD. / LEWISVILLE CLEMMONS RD.			

AVERAGE DAILY TRAFFIC  
2015 ## NO. OF VEHICLES PER DAY 2040 (VPD) IN 100'S

-L- GREAT WAGON RD.		-Y6- STYERS ST.	
NA/81	NA/1	NA/81	NA/1
GREAT WAGON RD. / STYERS ST.			

AVERAGE DAILY TRAFFIC  
2015 ## NO. OF VEHICLES PER DAY 2040 (VPD) IN 100'S

-Y6- SHALLOWFORD RD.		-Y6- STYERS ST.	
119/78	1/1	1/1	119/79
SHALLOWFORD RD. / STYERS ST.			

SEE SHEETS 2B-2, 2B-3 & 2B-6 FOR INTERSECTION DETAILS.  
SEE SHEET 11 FOR -L- PROFILE  
SEE SHEET 12 FOR -Y1A- PROFILE  
SEE SHEET 13 FOR -Y5- PROFILE  
SEE SHEET 14 FOR -Y6- PROFILE  
SEE SHEET 15 FOR -RABT2- PROFILE  
SEE SHEET 15 FOR -RABT3- PROFILE