

5/21/2017 10:53:36 AM Rdy_psh_06.dgn

-L-	-RABT2-	-RABT3-	-Y5-	-Y6-
PI Sta 48+17.50 Δ = 15° 22' 36.2" (LT) D = 4' 10" 55.8" L = 367.67' T = 184.95' R = 1,370.00' e = 0.03 RO = 78' DS = 40 mph	PI Sta 10+00.00 Δ = 359° 59' 20.3" (LT) D = 110' 11" 03.1" L = 0.00' T = 0.00' R = 52.00' e = NC RO = N/A DS = N/A	PI Sta 10+00.01 Δ = 359° 59' 16.1" (LT) D = 121' 54' 21.3" L = 295.30' T = 0.00' R = 47.00' e = NC RO = N/A DS = N/A	PI Sta 10+85.03 Δ = 6° 29' 20.3" (RT) D = 3' 49' 11.0" L = 169.88' T = 85.03' R = 1,500.00' e = EXIST. RO = N/A DS = 40 mph	PI Sta 15+01.45 Δ = 5° 02' 21.0" (RT) D = 2' 51' 53.2" L = 175.90' T = 88.01' R = 2,000.00' e = EXIST. RO = N/A DS = 25 mph

PROJECT REFERENCE NO. U-5536 SHEET NO. 6

RW SHEET NO.

ROADWAY DESIGN ENGINEER

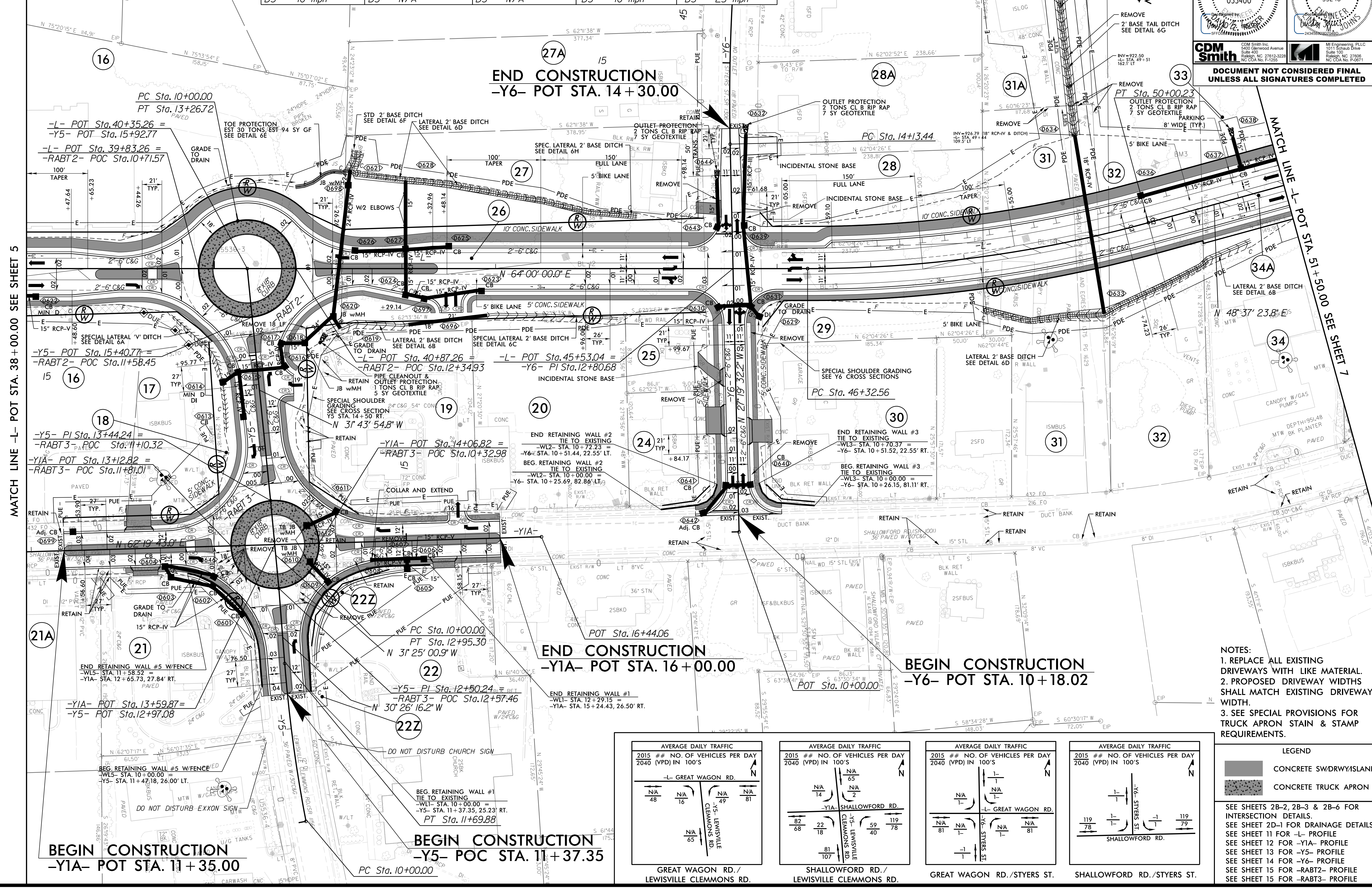
HYDRAULICS ENGINEER

SEAL 033400

SEAL 33246

CDM Smith

DOCUMENT NOT CONSIDERED FINAL UNLESS ALL SIGNATURES COMPLETED



MATCH LINE -L- POT STA. 38+00.00 SEE SHEET 5

MATCH LINE -L- POT STA. 51+50.00 SEE SHEET 7

BEGIN CONSTRUCTION -Y1A- POT STA. 11+35.00

BEGIN CONSTRUCTION -Y5- POC STA. 11+37.35

END CONSTRUCTION -Y1A- POT STA. 16+00.00

BEGIN CONSTRUCTION -Y6- POT STA. 10+18.02

AVERAGE DAILY TRAFFIC		AVERAGE DAILY TRAFFIC		AVERAGE DAILY TRAFFIC		AVERAGE DAILY TRAFFIC	
2015 ## NO. OF VEHICLES PER DAY 2040 (VPD) IN 100'S		2015 ## NO. OF VEHICLES PER DAY 2040 (VPD) IN 100'S		2015 ## NO. OF VEHICLES PER DAY 2040 (VPD) IN 100'S		2015 ## NO. OF VEHICLES PER DAY 2040 (VPD) IN 100'S	
-L- GREAT WAGON RD. / LEWISVILLE CLEMONS RD.		-Y1A- SHALLOWFORD RD. / LEWISVILLE CLEMONS RD.		-L- GREAT WAGON RD. / STYERS ST.		-Y6- SHALLOWFORD RD. / STYERS ST.	
NA/48	NA/16	NA/14	NA/2	NA/81	NA/81	119/78	119/79
NA/65	NA/49	82/68	22/18	NA/107	NA/81		

- NOTES:
1. REPLACE ALL EXISTING DRIVEWAYS WITH LIKE MATERIAL.
 2. PROPOSED DRIVEWAY WIDTHS SHALL MATCH EXISTING DRIVEWAY WIDTH.
 3. SEE SPECIAL PROVISIONS FOR TRUCK APRON STAIN & STAMP REQUIREMENTS.

LEGEND

CONCRETE SWDRWYISLAND

CONCRETE TRUCK APRON

SEE SHEETS 2B-2, 2B-3 & 2B-6 FOR INTERSECTION DETAILS.

SEE SHEET 2D-1 FOR DRAINAGE DETAILS

SEE SHEET 11 FOR -L- PROFILE

SEE SHEET 12 FOR -Y1A- PROFILE

SEE SHEET 13 FOR -Y5- PROFILE

SEE SHEET 14 FOR -Y6- PROFILE

SEE SHEET 15 FOR -RABT2- PROFILE

SEE SHEET 15 FOR -RABT3- PROFILE