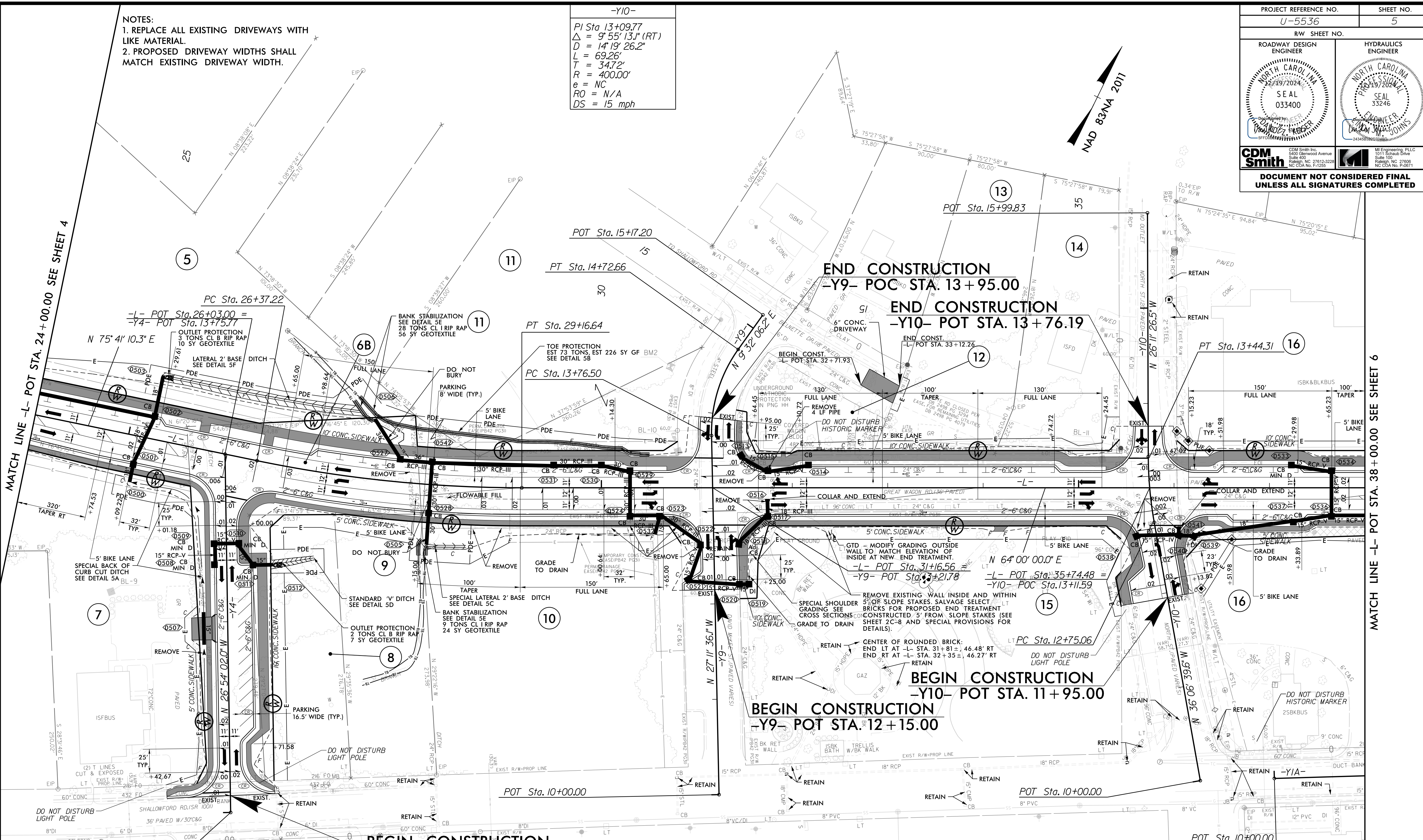


PROJECT REFERENCE NO. U-5536		SHEET NO. 5	
RW SHEET NO.		HYDRAULICS ENGINEER	
ROADWAY DESIGN ENGINEER		SEAL 33246	
DOCUMENT NOT CONSIDERED FINAL UNLESS ALL SIGNATURES COMPLETED			

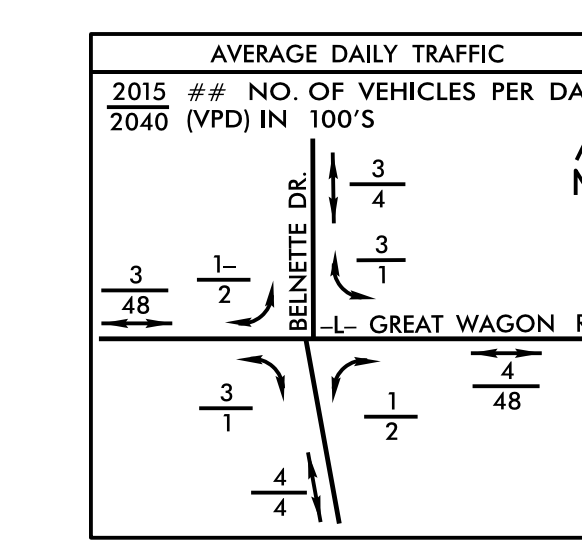
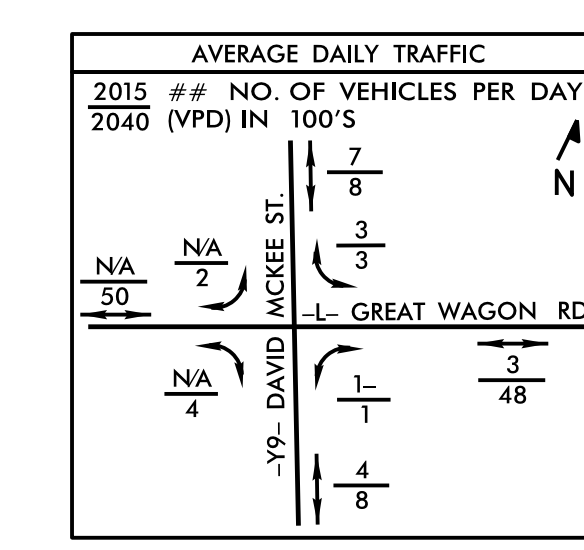
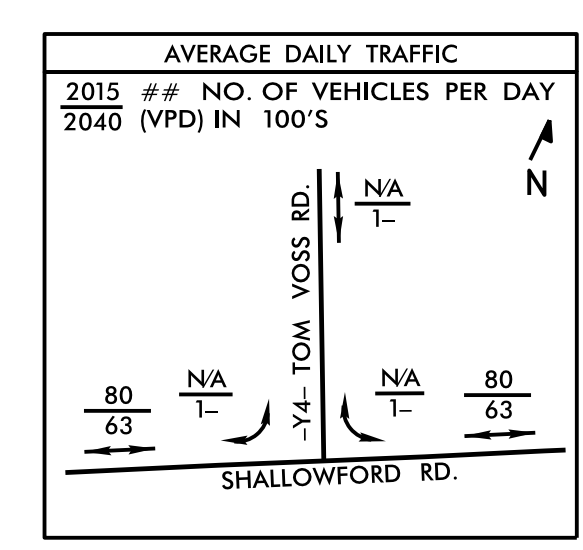
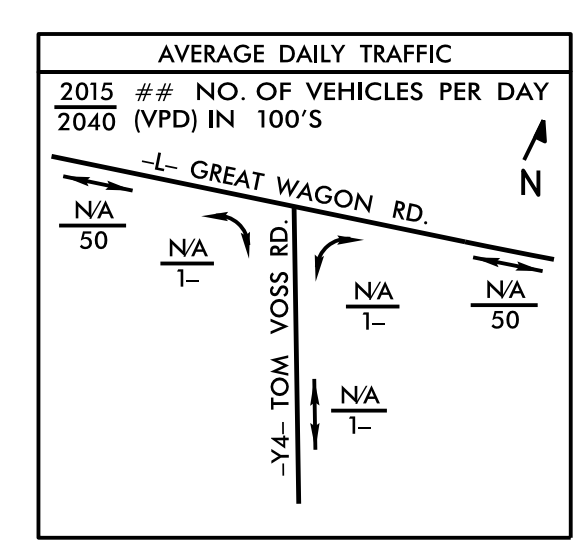
-Y10-
 PI Sta 13+09.77
 $\Delta = 9' 55' 13.1''$ (RT)
 $D = 14' 19' 26.2''$
 $L = 69.26'$
 $T = 34.72'$
 $R = 400.00'$
 $e = NC$
 $RO = N/A$
 $DS = 15$ mph

- NOTES:
 1. REPLACE ALL EXISTING DRIVEWAYS WITH LIKE MATERIAL.
 2. PROPOSED DRIVEWAY WIDTHS SHALL MATCH EXISTING DRIVEWAY WIDTH.



BEGIN CONSTRUCTION
 -Y4- POT STA. 10+17.67

-L-	-Y9-
PI Sta 27+77.42 $\Delta = 11' 41' 10.3''$ (LT) $D = 4' 10' 55.8''$ $L = 279.43'$ $T = 140.20'$ $R = 1,370.00'$ $e = 0.03$ $RO = 96'$ $DS = 40$ mph	PI Sta 14+26.30 $\Delta = 36' 43' 42.3''$ (RT) $D = 38' 11' 49.9''$ $L = 96.15'$ $T = 49.79'$ $R = 150.00'$ $e = EXIST.$ $RO = N/A$ $DS = 40$ mph



LEGEND
 CONCRETE SWDRWY/ISLAND

SEE SHEETS 2B-5 & 2B-6 FOR INTERSECTION DETAILS
 SEE SHEET 2D-1 FOR DRAINAGE DETAILS
 SEE SHEET 10 FOR -L- PROFILE
 SEE SHEET 13 FOR -Y4- PROFILE
 SEE SHEET 14 FOR -Y9- PROFILE
 SEE SHEET 15 FOR -Y10- PROFILE

5/14/19
 -SYSTEM: D:\036_Rdy_psh_05.dgn
 USER: C:\ORACLE\ADMIN\ADMIN

MATCH LINE -L- POT STA. 38+00.00 SEE SHEET 6