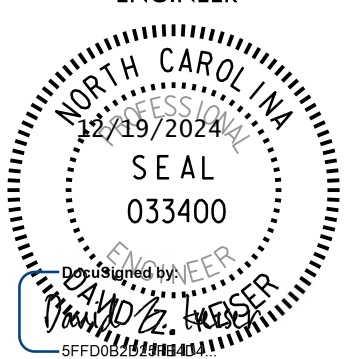
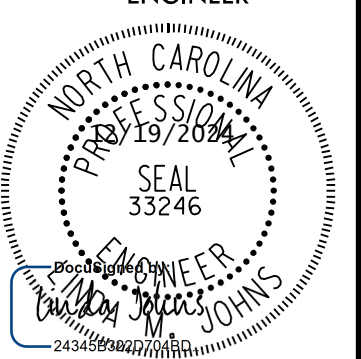
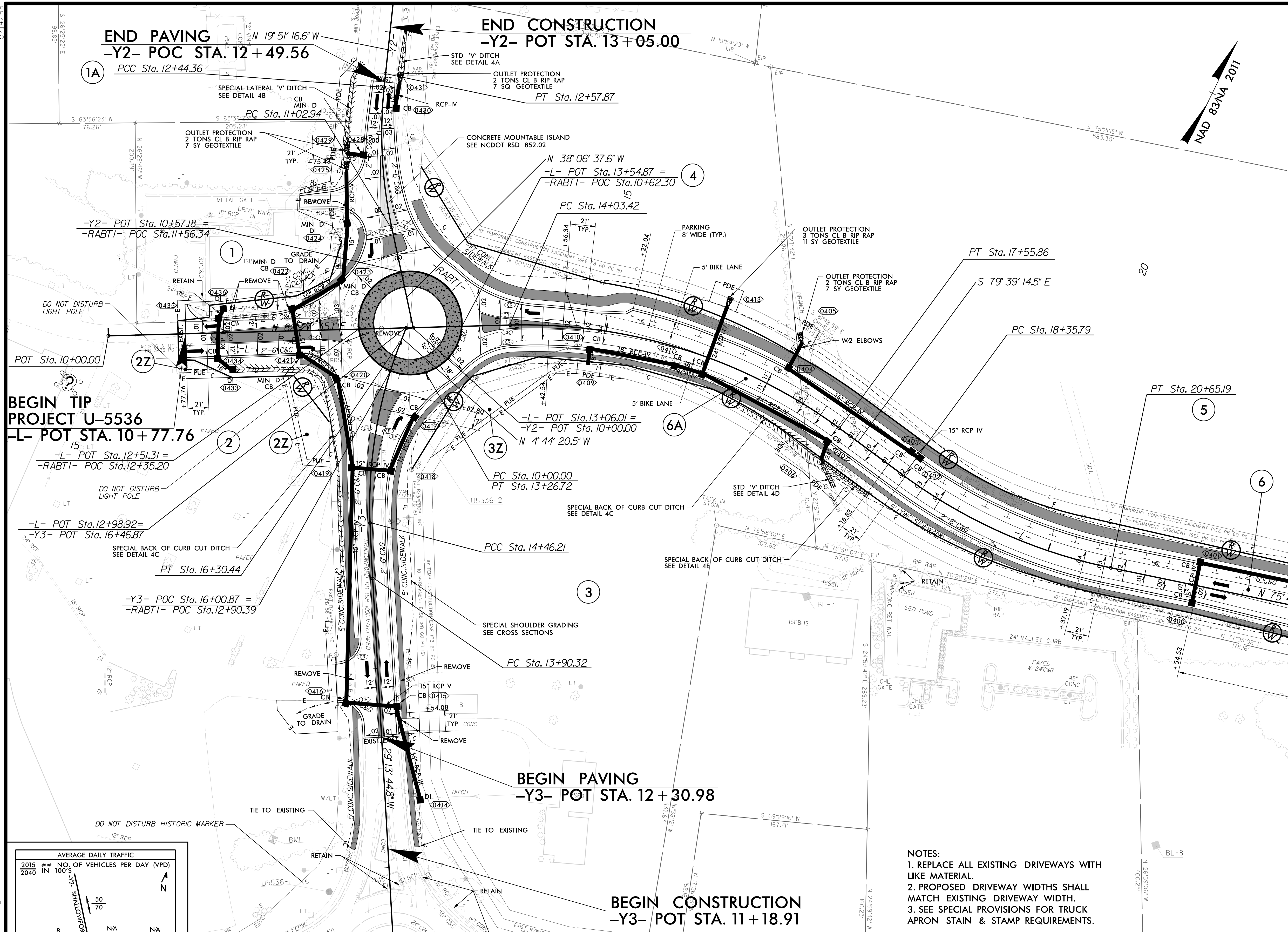


PROJECT REFERENCE NO. U-5536		SHEET NO. 4	
RW SHEET NO.			
ROADWAY DESIGN ENGINEER		HYDRAULICS ENGINEER	
 NORTH CAROLINA PROFESSIONAL SEAL 033400 ROADWAY DESIGN ENGINEER CDM SMITH INC.		 NORTH CAROLINA PROFESSIONAL SEAL 33246 HYDRAULICS ENGINEER CDM SMITH INC.	
<b>CDM Smith</b> CDM Smith Inc. 8400 Glenwood Avenue Suite 400 Raleigh, NC 27612-3229 NC CDA No. F-1255			
<b>Document NOT CONSIDERED FINAL UNLESS ALL SIGNATURES COMPLETED</b>			



**AVERAGE DAILY TRAFFIC**

Year	# of Vehicles per Day (VPD)
2015	50
2020	70

Map showing intersection of GREAT WAGON RD. / SHALLOWFORD RD. with stationing: 12, 13, 11, 50, 33, 46, 82.

- NOTES:**
1. REPLACE ALL EXISTING DRIVEWAYS WITH LIKE MATERIAL.
  2. PROPOSED DRIVEWAY WIDTHS SHALL MATCH EXISTING DRIVEWAY WIDTH.
  3. SEE SPECIAL PROVISIONS FOR TRUCK APRON STAIN & STAMP REQUIREMENTS.

-L-		-Y2-		-Y3-		-RABT1-	
PI Sta 15+86.35	PI Sta 19+52.30	PI Sta 11+74.23	PI Sta 12+51.12	PI Sta 14+18.26	PI Sta 15+39.63	PI Sta 10+00.00	PI Sta 10+00.00
$\Delta = 37^\circ 53' 10.4''$ (RT)	$\Delta = 24^\circ 39' 35.2''$ (LT)	$\Delta = 18^\circ 00' 21.5''$ (RT)	$\Delta = 0^\circ 14' 59.4''$ (RT)	$\Delta = 1^\circ 01' 58.7''$ (RT)	$\Delta = 23^\circ 27' 25.6''$ (RT)	$\Delta = 359^\circ 59' 20.3''$ (LT)	$\Delta = 359^\circ 59' 20.3''$ (LT)
D = 10' 44' 58.8"	D = 10' 44' 58.8"	D = 12' 43' 56.6"	D = 1' 50' 53.7"	D = 12' 43' 56.6"	D = 12' 43' 56.6"	D = 110' 11' 03.1"	D = 110' 11' 03.1"
L = 352.44'	L = 229.40'	L = 141.42'	L = 13.52'	L = 55.89'	L = 184.23'	L = 326.72'	L = 326.72'
T = 182.93'	T = 116.50'	T = 71.30'	T = 6.76'	T = 27.95'	T = 93.42'	T = 0.00'	T = 0.00'
R = 533.00'	R = 533.00'	R = 450.00'	R = 3,100.00'	R = 3,100.00'	R = 450.00'	R = 52.00'	R = 52.00'
e = 0.04	e = 0.04	e = NC	e = EXIST.	e = NC	e = NC	e = NC	e = NC
RO = 84'	RO = 84'	RO = N/A	RO = N/A	RO = N/A	RO = N/A	RO = N/A	RO = N/A
DS = 40 mph	DS = 40 mph	DS = 15 mph	DS = 40 mph	DS = 30 mph	DS = 15 mph	DS = N/A	DS = N/A

**LEGEND**

- CONCRETE SWDRWY/ISLAND
- CONCRETE TRUCK APRON

SEE SHEET 2B-1 FOR INTERSECTION DETAILS  
 SEE SHEET 2D-1 FOR DRAINAGE DETAILS  
 SEE SHEET 10 FOR -L- PROFILE  
 SEE SHEET 13 FOR -Y2- PROFILE  
 SEE SHEET 13 FOR -Y3- PROFILE  
 SEE SHEET 15 FOR -RABT1- PROFILE

-SYSTEM: U5536\_Rdy\_psh\_04.dgn  
 -USER: C:\ORACLE\

MATCH LINE -L- POT STA. 24+00.00 SEE SHEET 5