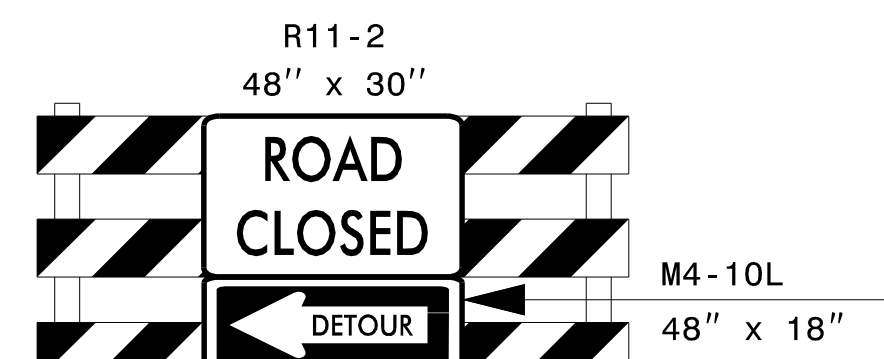
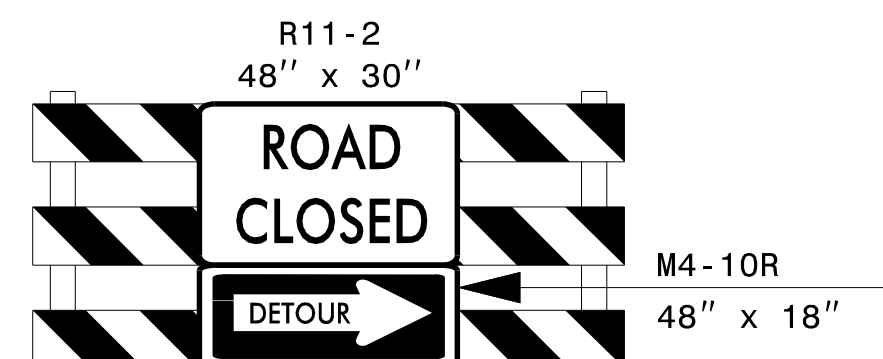


E1	MESSAGE NO. 1 I-40 EB DETOUR -----<	MESSAGE NO. 2 I-40 EB DETOUR -----<	W1	MESSAGE NO. 1 I-40 WB DETOUR -----<	MESSAGE NO. 2 I-40 WB DETOUR -----<
	CHANGEABLE MESSAGE SIGN (SHORT TERM)			CHANGEABLE MESSAGE SIGN (SHORT TERM)	
E2	MESSAGE NO. 1 I-40 EB DETOUR ----->	MESSAGE NO. 2 KEEP STRAIGHT	W2	MESSAGE NO. 1 I-40 WB DETOUR ----->	MESSAGE NO. 2 I-40 WB DETOUR ----->
	CHANGEABLE MESSAGE SIGN (SHORT TERM)			CHANGEABLE MESSAGE SIGN (SHORT TERM)	
W3	MESSAGE NO. 1 I-40 WB DETOUR ----->	MESSAGE NO. 2 KEEP STRAIGHT	CHANGEABLE MESSAGE SIGN (SHORT TERM)		

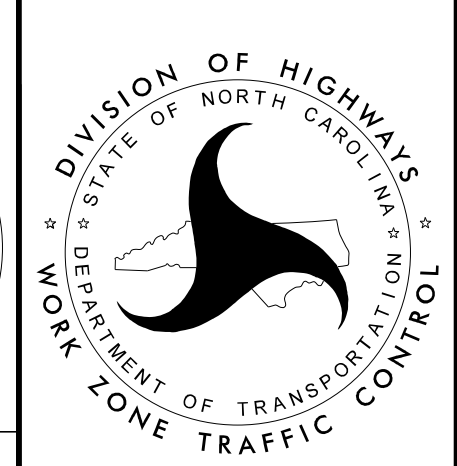
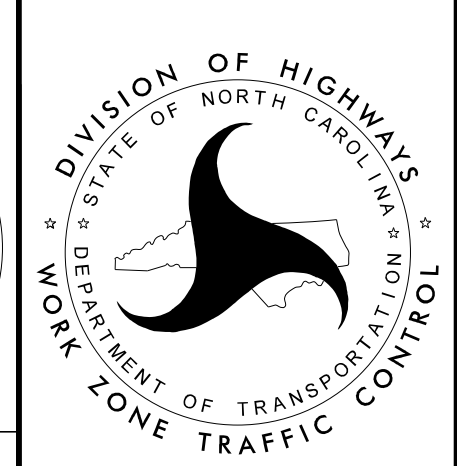


NOTES:
 SEE LOCAL NOTES FOR COORDINATING WITH NCDOT.
 ROAD CLOSURE IS AT PROJECT SITE LOCATION, SEE INSET A DETAIL SHEET FOR WORKZONE.
 DETOUR: ● ● ● ●

11/7/2024
 R:\New_Raleigh_Data\PROJECTS\Engineering Projects\119308.000 BR-0152 TMP, PMP, Signing Plans (Volker+)\TMP_BR-0152 Davie 76_V6.0 TMP, PMP, Signing Plans (Volker+)\TMP_05_(I-40)_Detour_Map.dgn
 User: zachary.thornton

VOLKERT
 5430 Wade Park Blvd., Suite 410
 Raleigh, NC 27607
 Tel: 919-854-0344 Fax: 919-854-0355
 NC License No. F-0765

DocuSigned by:
 APPROVED: *Zachary Thornton*
 E4D10EEB0CBB48A
 DATE: 12/21/2024
 SEAL



**I-40
 DETOUR ROUTE**