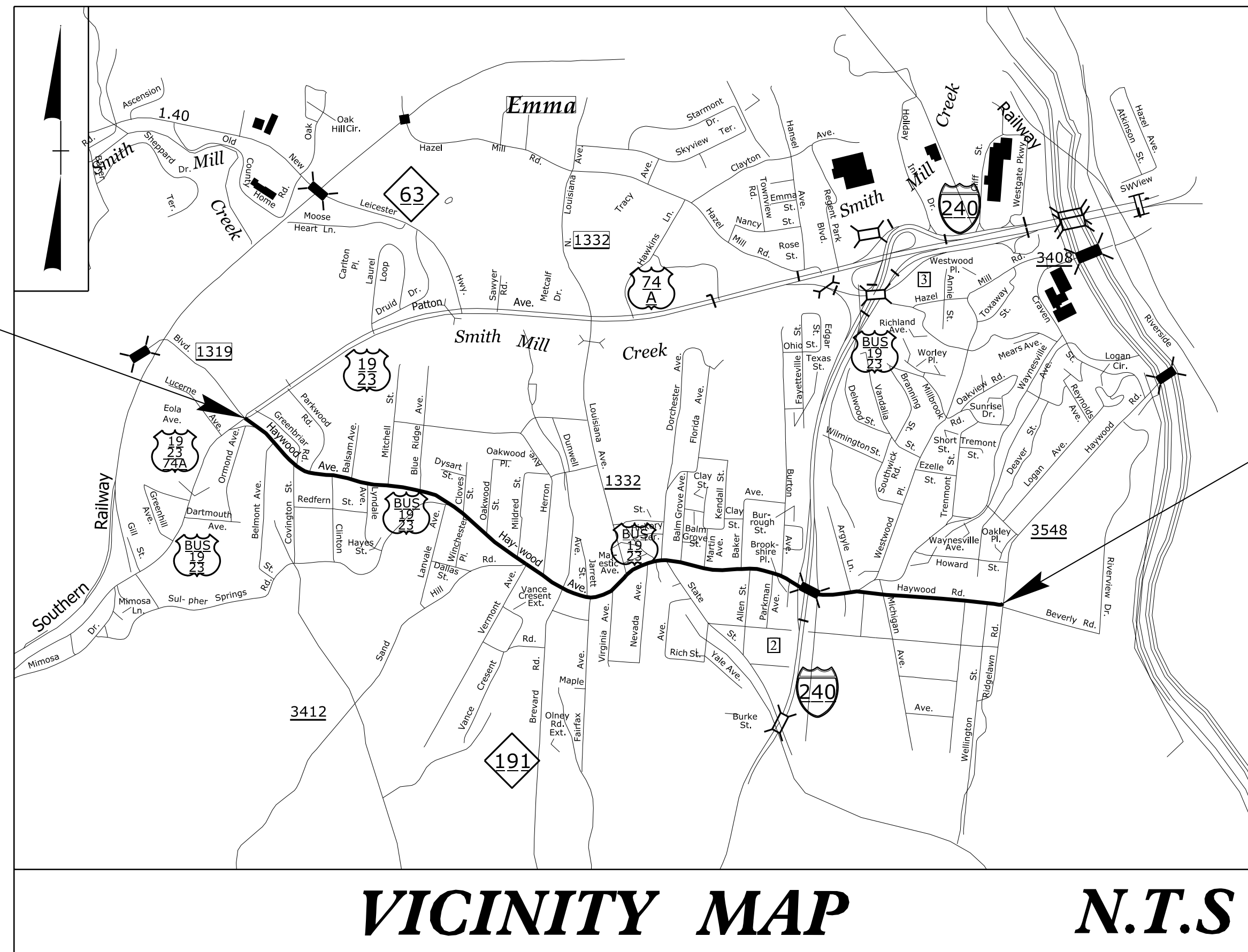


STATE OF NORTH CAROLINA
DIVISION OF HIGHWAYS

TRANSPORTATION MANAGEMENT PLAN

BUNCOMBE COUNTY



BEGIN TIP PROJECT HL-0003

END TIP PROJECT HL-0003

VICINITY MAP N.T.S

LOCATION: US 19 /23 BUSINESS (HAYWOOD RD)
FROM US 1923/74 (PATTON AVE.) TO RIDGELAWN RD.

TYPE OF WORK: DRAINAGE, PAVING, AND SIGNALS

INDEX OF SHEETS

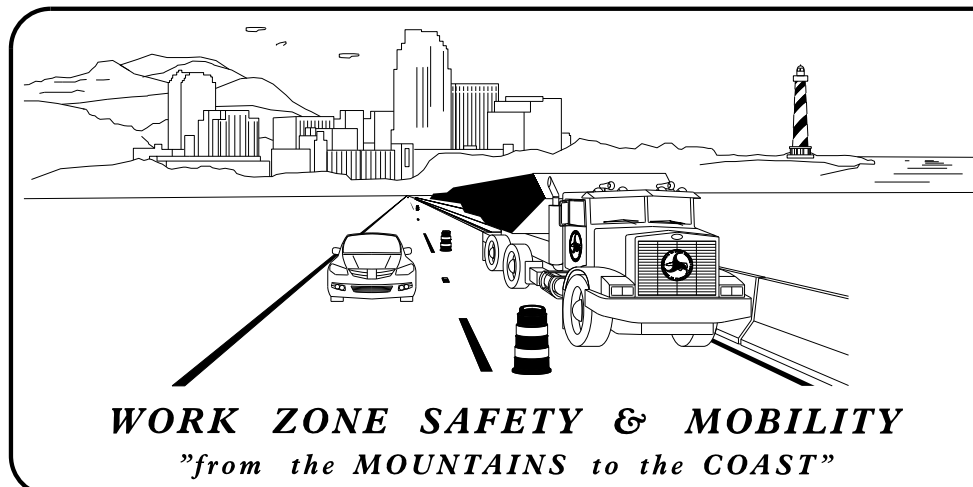
SHEET NO.	TITLE
TMP-1	TITLE SHEET, VICINITY MAP, AND INDEX OF SHEETS
TMP-1A	LIST OF APPLICABLE ROADWAY STANDARD DRAWINGS, AND LEGEND
TMP-1B	TRANSPORTATION OPERATIONS PLAN: (MANAGEMENT STRATEGIES, GENERAL NOTES, AND LOCAL NOTES)
TMP-2	SIDEWALK CLOSURE DETAILS

SHEET NO.
TMP-1

HL-0003

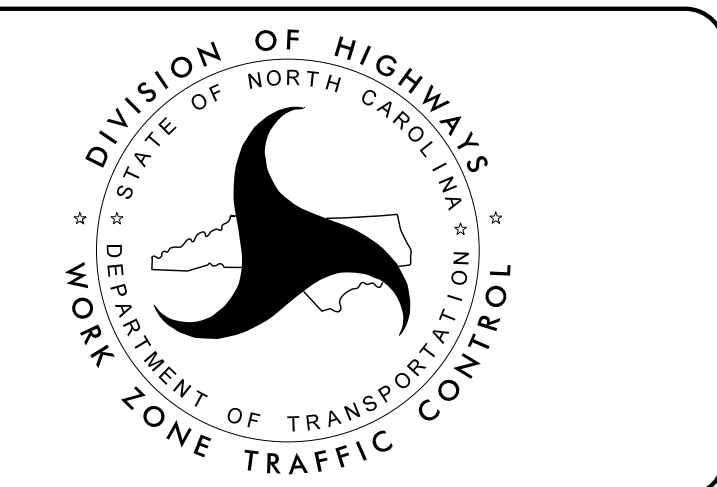
TIP PROJECT:

30-JUL-2024 09:25
S:\DDC\Projects\Buncombe\SR_3548_Haywood_Road\TrafficControl\TP\SR_3548_Haywood_Rd.ddc_TC_TMP.dgn
\$\$\$\$\$USERNAME\$\$\$\$\$



PLANS PREPARED BY:
DIVISION 13 DDC
55 ORANGE STREET ASHEVILLE, NC 28801

NCDOT CONTACTS:
WILLIAM C. CARVER P.E.
PROJECT ENGINEER
EVAN WELLS
PROJECT DESIGN ENGINEER



DOCUMENT NOT CONSIDERED FINAL
UNLESS ALL SIGNATURES COMPLETED

APPROVED: *William C. Carver*
DATE: 07/30/2024

SEAL
NORTH CAROLINA
PROFESSIONAL
SEAL
041993
ENGINEER
WILLIAM C. CARVER

ROADWAY STANDARD DRAWINGS

THE FOLLOWING ROADWAY STANDARDS AS SHOWN IN "ROADWAY STANDARD DRAWINGS" - N.C. DEPARTMENT OF TRANSPORTATION - RALEIGH, N.C., DATED JANUARY 2024 ARE APPLICABLE TO THIS PROJECT AND BY REFERENCE HEREBY ARE CONSIDERED A PART OF THESE PLANS:

STD. NO.	TITLE
1101.01	WORK ZONE WARNING SIGNS
1101.02	TEMPORARY LANE CLOSURES
1101.04	TEMPORARY SHOULDER CLOSURES
1101.11	TRAFFIC CONTROL DESIGN TABLES
1110.01	STATIONARY WORK ZONE SIGNS
1110.02	PORTABLE WORK ZONE SIGNS
1115.01	FLASHING ARROW BOARDS
1130.01	DRUMS
1135.01	CONES
1145.01	BARRICADES
1150.01	FLAGGERS
1160.01	TEMPORARY CRASH CUSHION
1165.01	TRUCK MOUNTED ATTENUATOR
1180.01	SKINNY DRUMS
1205.01	PAVEMENT MARKINGS - LINE TYPES AND OFFSETS
1205.02	PAVEMENT MARKINGS - TWO LANE AND MULTILANE ROADWAYS
1205.05	PAVEMENT MARKINGS - TURN LANES

LEGEND

GENERAL

- DIRECTION OF TRAFFIC FLOW
- DIRECTION OF PEDESTRIAN TRAFFIC FLOW
- EXIST. PVMT.
- NORTH ARROW
- PROPOSED PVMT.
- TEMP. SHORING (LOCATION PURPOSES ONLY)

- WORK AREA
- REMOVAL
- TEMPORARY PAVEMENT

SIGNALS

- EXISTING
- PROPOSED
- TEMPORARY
- PORTABLE TRAFFIC SIGNAL

PAVEMENT MARKINGS

- EXISTING LINES
- TEMPORARY LINES

TRAFFIC CONTROL DEVICES

- BARRICADE (TYPE III)
- CONE
- DRUM
- SKINNY DRUM
- TUBULAR MARKER
- TEMPORARY CRASH CUSHION
- FLASHING ARROW BOARD
- FLAGGER
- LAW ENFORCEMENT
- TRUCK MOUNTED ATTENUATOR (TMA)
- CHANGEABLE MESSAGE SIGN

TEMPORARY SIGNING

- PORTABLE SIGN
- STATIONARY SIGN
- STATIONARY OR PORTABLE SIGN

PAVEMENT MARKERS

- CRYSTAL/CRYSTAL
- CRYSTAL/RED
- YELLOW/YELLOW

PAVEMENT MARKING SYMBOLS

- PAVEMENT MARKING SYMBOLS

30-JUL-2024 09:26
 S:\DDC\Projects\Buncombe\SR_3548_Haywood_Road\TrafficControl\TCP\SR_3548_Haywood_Rd.dwg...
 \$\$\$USERNAME\$\$\$

APPROVED: DATE: 07/30/2024 SEAL 		ROADWAY STANDARD DRAWINGS & LEGEND
DOCUMENT NOT CONSIDERED FINAL UNLESS ALL SIGNATURES COMPLETED		

MANAGEMENT STRATEGIES

LOCAL TRAFFIC WILL BE MAINTAINED USING A TWO-WAY, TWO-LANE PATTERN DURING CONSTRUCTION.

- A. USE ROADWAY STANDARD DRAWING 1101.02 FOR LANE CLOSURES.
- B. DO NOT WORK ON MORE THAN 2 CROSSINGS SIMULTANEOUSLY.
- C. WHEN CLOSING A CROSSING, "SIDEWALK CLOSED AHEAD" SIGNS SHALL BE PLACED AT THE NEXT ADJACENT CROSSING IN BOTH DIRECTIONS. SEE TMP-2. THE RAMP ON BOTH SIDES OF THE ROAD CANNOT BE CLOSED SIMULTANEOUSLY. ACCESS TO ONE OF THE RAMPS MUST BE MAINTAINED TO ACCOMMODATE DETOURED PEDESTRIAN TRAFFIC.
- D. WHEN CLOSING A CROSSING, DO NOT CLOSE THE NEXT ADJACENT CROSSING IN EITHER DIRECTION.

GENERAL NOTES

CHANGES MAY BE REQUIRED WHEN PHYSICAL DIMENSIONS IN THE DETAIL DRAWINGS, STANDARD DETAILS, AND ROADWAY DETAILS ARE NOT ATTAINABLE TO MEET FIELD CONDITIONS OR RESULT IN DUPLICATE OR UNDESIRED OVERLAPPING OF DEVICES. MODIFICATION MAY INCLUDE: MOVING, SUPPLEMENTING, COVERING, OR REMOVAL OF DEVICES AS DIRECTED BY THE ENGINEER.

THE FOLLOWING GENERAL NOTES APPLY AT ALL TIMES FOR THE DURATION OF THE CONSTRUCTION PROJECT EXCEPT WHEN OTHERWISE NOTED IN THE PLAN OR DIRECTED BY THE ENGINEER.

TIME RESTRICTIONS

- A) DO NOT CLOSE OR NARROW TRAVEL LANES AS FOLLOWS:

ROAD_NAME	DAY AND TIME RESTRICTIONS
SR 3548 (HAYWOOD RD)	MONDAY - SUNDAY 7AM-8PM

- B) DO NOT CLOSE OR NARROW TRAVEL LANES DURING HOLIDAYS OR SPECIAL EVENTS AS FOLLOWS:

ROAD_NAME
SR 3548 (HAYWOOD RD)

HOLIDAY

1. FOR ANY UNEXPECTED OCCURENCE THAT CREATES UNUSUALLY HIGH TRAFFIC VOLUMES, AS DIRECTED BY THE ENGINEER.
2. FOR NEW YEAR'S BETWEEN THE HOURS OF 7:00 A.M. DECEMBER 31ST TO 8:00 P.M. JANUARY 2ND. IF NEW YEAR'S DAY IS ON A FRIDAY, SATURDAY, SUNDAY, OR MONDAY THEN UNTIL 8:00 P.M. THE FOLLOWING TUESDAY.
3. FOR EASTER, BETWEEN THE HOURS OF 7:00 A.M. FRIDAY TO 8:00 P.M. MONDAY.
4. FOR MEMORIAL DAY, BETWEEN THE HOURS OF 7:00 A.M. FRIDAY TO 8:00 P.M. TUESDAY.
5. FOR INDEPENDENCE DAY, BETWEEN THE HOURS OF 7:00 A.M. THE DAY BEFORE INDEPENDENCE DAY AND 8:00 P.M. THE DAY AFTER INDEPENDENCE DAY. IF INDEPENDENCE DAY IS ON FRIDAY, SATURDAY, SUNDAY OR MONDAY THEN BETWEEN THE HOURS OF 7:00 A.M. THE THURSDAY BEFORE INDEPENDENCE DAY AND 8:00 P.M. THE TUESDAY AFTER INDEPENDENCE DAY.
6. FOR LABOR DAY, BETWEEN THE HOURS OF 7:00 A.M. FRIDAY AND 8:00 P.M. TUESDAY.
7. FOR THANKSGIVING DAY, BETWEEN THE HOURS OF 7:00 A.M. TUESDAY TO 8:00 P.M. MONDAY.
8. FOR CHRISTMAS, BETWEEN THE HOURS OF 7:00 A.M. THE FRIDAY BEFORE THE WEEK OF CHRISTMAS DAY AND 8:00 P.M. THE FOLLOWING TUESDAY AFTER THE WEEK OF CHRISTMAS.

LAND AND SHOULDER CLOSURE REQUIREMENTS

- C) REMOVE LANE CLOSURE DEVICES FROM THE LANE WHEN WORK IS NOT BEING PERFORMED BEHIND THE LANE CLOSURE OR WHEN A LANE CLOSURE IS NO LONGER NEEDED OR AS DIRECTED BY THE ENGINEER.
- D) WHEN PERSONNEL AND/OR EQUIPMENT ARE WORKING ON THE SHOULDER ADJACENT TO AN UNDIVIDED FACILITY AND WITHIN 5 FT OF AN OPEN TRAVEL LANE, CLOSE THE NEAREST OPEN TRAVEL LANE USING ROADWAY STANDARD DRAWING NO. 1101.02 UNLESS THE WORK AREA IS PROTECTED BY BARRIER OR GUARDRAIL.
- E) WHEN PERSONNEL AND/OR EQUIPMENT ARE WORKING WITHIN A LANE OF TRAVEL OF AN UNDIVIDED OR DIVIDED FACILITY, CLOSE THE LANE ACCORDING TO THE TRAFFIC CONTROL PLANS, ROADWAY STANDARD DRAWINGS, OR AS DIRECTED BY THE ENGINEER. CONDUCT THE WORK SO THAT ALL PERSONNEL AND/OR EQUIPMENT REMAIN WITHIN THE CLOSED TRAVEL LANE.
- F) DO NOT WORK SIMULTANEOUSLY WITHIN 15FT ON BOTH SIDES OF AN OPEN TRAVELWAY, RAMP, OR LOOP WITHIN THE SAME LOCATION UNLESS PROTECTED WITH GUARDRAIL OR BARRIER.
- G) DO NOT INSTALL MORE THAN 2 SIMULTANEOUS LANE CLOSURES IN ANY ONE DIRECTION ON SR 3548 (HAYWOOD RD).
- H) PROVIDE A MINIMUM OF 1 MILE BETWEEN LANE CLOSURES, MEASURED FROM THE END OF ONE CLOSURE TO THE FIRST SIGN OF THE NEXT LANE CLOSURE.

PAVEMENT EDGE DROP OFF REQUIREMENTS

- I) BACKFILL AT A 6:1 SLOPE UP TO THE EDGE AND ELEVATION OF EXISTING PAVEMENT IN AREAS ADJACENT TO AN OPENED TRAVEL LANE THAT HAS AN EDGE OF PAVEMENT DROP-OFF AS FOLLOWS:

BACKFILL DROP-OFFS THAT EXCEED 2 INCHES ON ROADWAYS WITH POSTED SPEED LIMITS OF 45 MPH OR GREATER.

BACKFILL DROP-OFFS THAT EXCEED 3 INCHES ON ROADWAYS WITH POSTED SPEED LIMITS LESS THAN 45 MPH.

BACKFILL WITH SUITABLE COMPACTED MATERIAL, AS APPROVED BY THE ENGINEER, AT NO EXPENSE TO THE DEPARTMENT.

- J) DO NOT EXCEED A DIFFERENCE OF 2 INCHES IN ELEVATION BETWEEN OPEN LANES OF TRAFFIC FOR NOMINAL LIFTS OF 1.5 INCHES. INSTALL ADVANCE WARNING "UNEVEN LANES" SIGNS (W8-11) 300 FT. IN ADVANCE AND A MINIMUM OF EVERY HALF MILE THROUGHOUT THE UNEVEN AREA.

TRAFFIC PATTERN ALTERATIONS

- K) NOTIFY THE ENGINEER THIRTY (30) CALENDAR DAYS PRIOR TO ANY TRAFFIC PATTERN ALTERATION.

SIGNING

- L) INSTALL BLACK ON ORANGE "DIP" SIGNS (W8-2) AND/OR "BUMP" SIGNS (W8-1) 300 FT. IN ADVANCE OF THE UNEVEN AREA, OR AS DIRECTED BY THE ENGINEER.

TRAFFIC CONTROL DEVICES

- M) WHEN LANE CLOSURES ARE NOT IN EFFECT, SPACE CHANNELIZING DEVICES IN WORK AREAS NO GREATER IN FEET THAN TWICE THE POSTED SPEED LIMIT (MPH) EXCEPT 10 FT ON-CENTER IN RADIUS AND 3 FT OFF THE EDGE OF AN OPEN TRAVELWAY. REFER TO STANDARD SPECIFICATIONS FOR ROADS AND STRUCTURES SECTIONS 1130 (DRUMS), 1135 (CONES) AND 1180 (SKINNY DRUMS) FOR ADDITIONAL REQUIREMENTS.

PEDESTRIAN ACCESS

- N) CONTRACTOR SHALL MAINTAIN SIDEWALK ACCESS AT ALL TIMES. CONTRACTOR SHALL BE RESPONSIBLE TO PROVIDE TEMPORARY SIDEWALKS (CONCRETE, ASPHALT, OR OTHER SUITABLE MATERIAL AS APPROVED BY THE ENGINEER) AT ALL LOCATIONS WHERE THE OPEN PEDESTRIAN TRAVELWAY (INCLUDING RAMPS) HAS BEEN REMOVED FOR CONSTRUCTION OPERATIONS. ALL TEMPORARY CROSSINGS SHALL MEET ADA REQUIREMENTS.

MISCELLANEOUS

- O) LAW ENFORCEMENT MAY BE USED TO MAINTAIN TRAFFIC THROUGH THE WORK AREA AND/OR INTERSECTIONS AS DIRECTED BY THE ENGINEER. THE DEPARTMENT WILL PROVIDE POLICE CONTROL AT INTERSECTIONS WHEN REQUIRED. PROVIDE PORTABLE LIGHTING FOR LAW ENFORCEMENT WHEN THEY ARE CONTROLLING TRAFFIC AT INTERSECTIONS AT NIGHTTIME.
- P) CONTRACTOR SHALL MAINTAIN ACCESS TO BUS STOPS AND BUSINESSES AT ALL TIMES.
- Q) CONTRACTOR SHALL COORDINATE WITH CITY OF ASHEVILLE REGARDING THE LEVEL OF ON STREET PARKING TO BE MAINTAINED DURING CONSTRUCTION OPERATIONS.

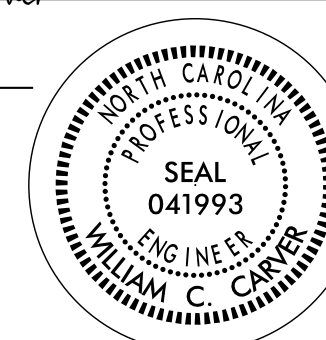
LOCAL NOTES:

- 1) EMERGENCY VEHICLE ACCESS MUST BE MAINTAINED AT ALL TIMES.
- 2) DRIVEWAYS MUST MAINTAIN ACCESS AT ALL TIMES.

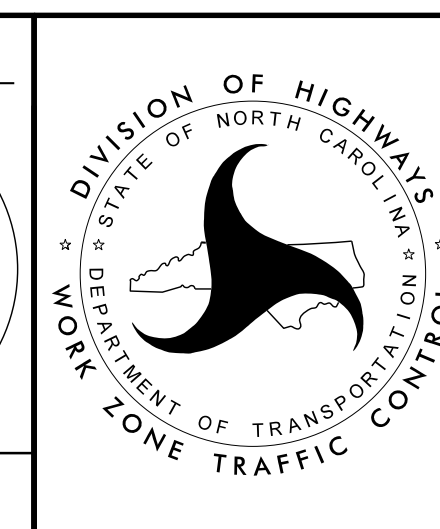
30-JUL-2024 09:27 S:\DDC\Projects\Buncombe\SR_3548_Haywood_Road\TrafficControl\TCP\SR_3548_Haywood_Rd.ddc_TC_TMP_TMP1B.dgn \$\$\$USERNAME\$\$\$

APPROVED: *William C. Carver*
DocuSigned by: William C. Carver 163025A8519349F...
 DATE: 07/30/2024

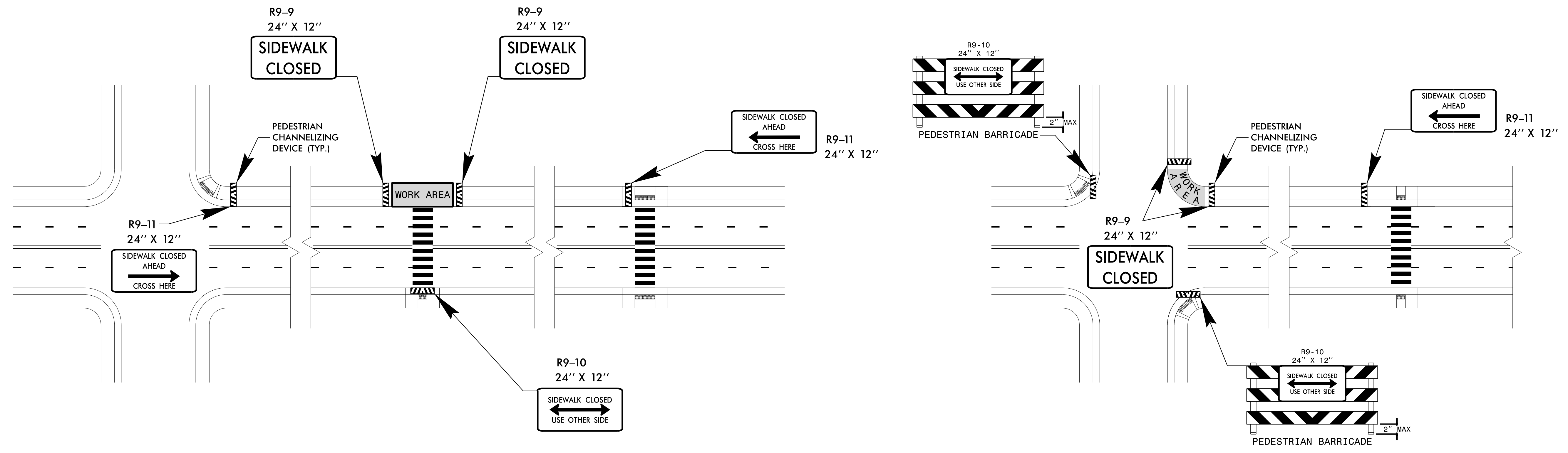
SEAL



**DOCUMENT NOT CONSIDERED FINAL
UNLESS ALL SIGNATURES COMPLETED**

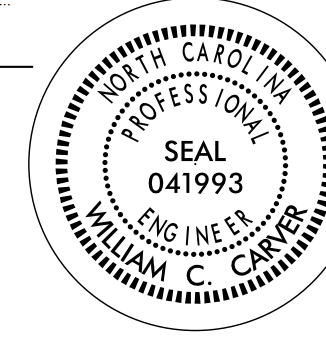



**TRANSPORTATION
OPERATIONS
PLAN**



SIDEWALK CLOSURES

30-JUL-2024 09:27
 S:\DDC\Projects\Buncombe\SR_3548_Haywood_Road\TrafficControl\TCP\SR_3548_Haywood_Rd\ddc_TC_TMP_TMP2.dgn
 \$\$\$USERNAME\$\$\$

APPROVED: <i>William C. Carver</i> DATE: 07/30/2024 SEAL 		TRANSPORTATION OPERATIONS PLAN
DOCUMENT NOT CONSIDERED FINAL UNLESS ALL SIGNATURES COMPLETED		