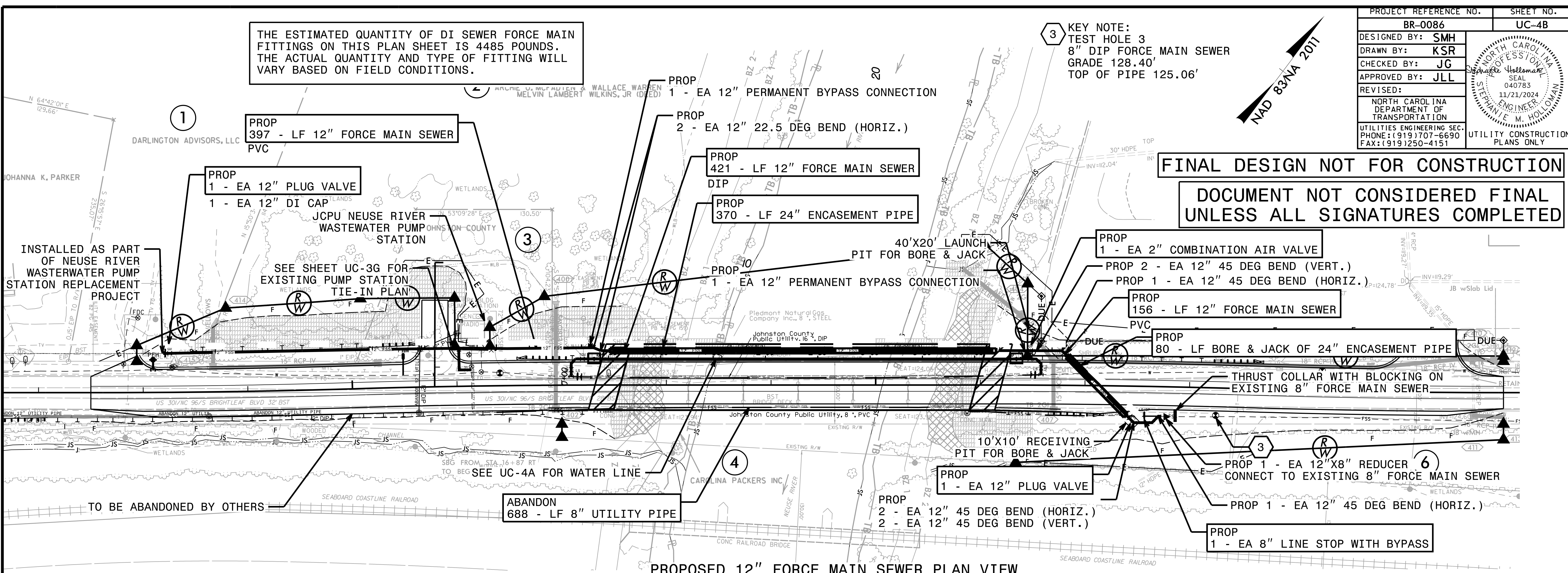
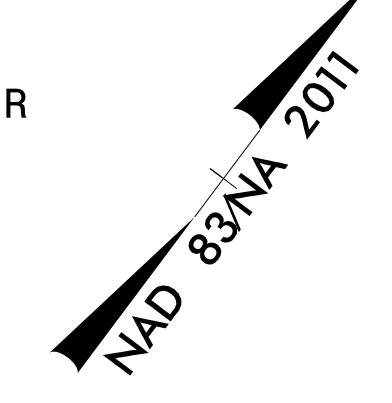


8/17/2024

PROJECT REFERENCE NO.	SHEET NO.
BR-0086	UC-4B
DESIGNED BY: SMH	
DRAWN BY: KSR	
CHECKED BY: JG	
APPROVED BY: JLL	
REVISED:	
NORTH CAROLINA DEPARTMENT OF TRANSPORTATION	
UTILITIES ENGINEERING SEC. PHONE: (919) 707-6690 FAX: (919) 250-4151	
UTILITY CONSTRUCTION PLANS ONLY	

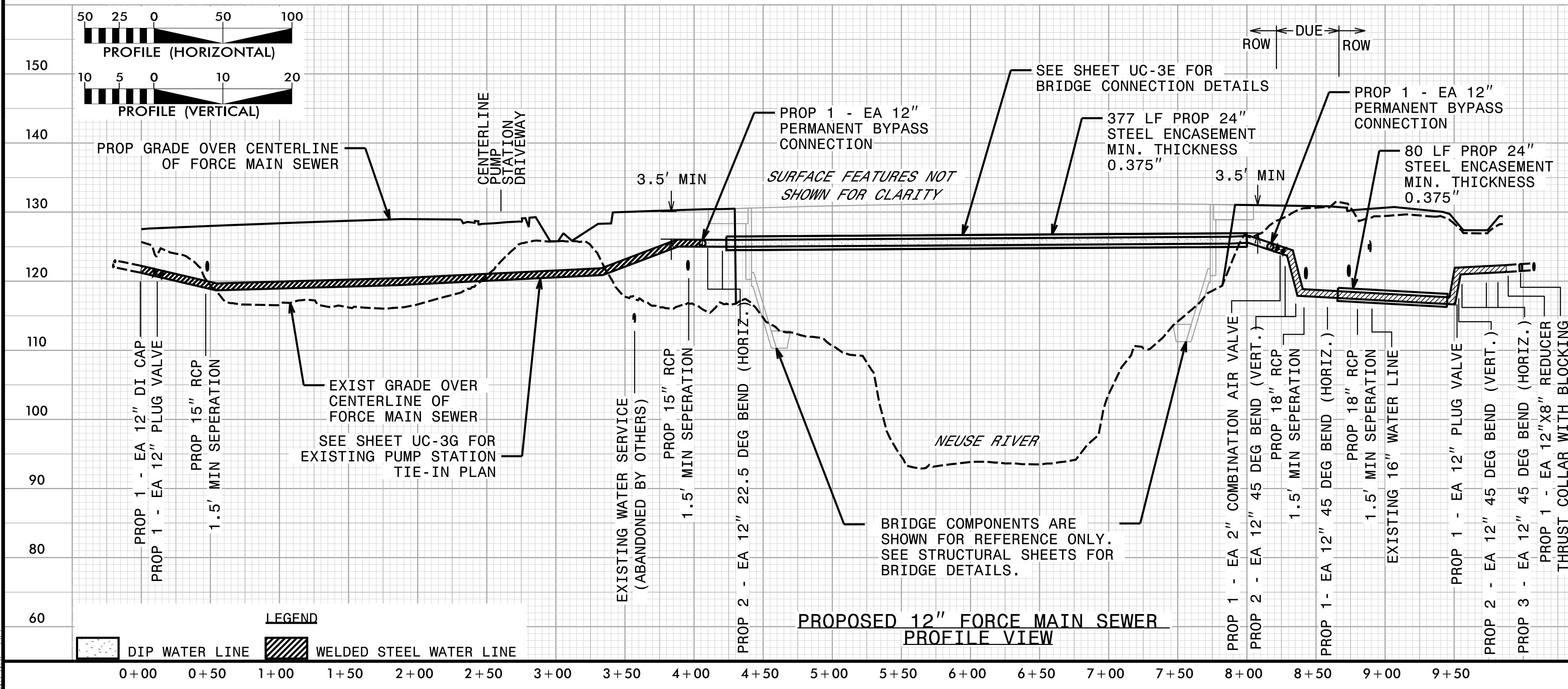
THE ESTIMATED QUANTITY OF DI SEWER FORCE MAIN FITTINGS ON THIS PLAN SHEET IS 4485 POUNDS. THE ACTUAL QUANTITY AND TYPE OF FITTING WILL VARY BASED ON FIELD CONDITIONS.

KEY NOTE:  
 3 TEST HOLE 3  
 8" DIP FORCE MAIN SEWER  
 GRADE 128.40'  
 TOP OF PIPE 125.06'



**FINAL DESIGN NOT FOR CONSTRUCTION**  
**DOCUMENT NOT CONSIDERED FINAL UNLESS ALL SIGNATURES COMPLETED**

PROPOSED 12" FORCE MAIN SEWER PLAN VIEW



- NOTES
- DIP FORCE MAIN SEWER SHALL BE CLASS 350 RESTRAINED JOINT TR FLEX PIPE.
  - DIP IN SEWER SERVICE SHALL HAVE AN INTERIOR LINING OF PROTECTO 401 OR APPROVED EQUAL.
  - PROVIDE POLYETHYLENE ENCASEMENT ON DIP. TR FLEX PIPE SHALL BE INSTALLED PER THE MANUFACTURER'S RECOMMENDATIONS TO PROVIDE REQUIRED EXPANSION AND CONTRACTION OF PIPE.
  - ALL BENDS, FITTINGS, AND SPECIALS SHALL BE RESTRAINED JOINT TYPE. BLOCKING AND BRACING SHALL BE USED IN CONJUNCTION WITH RESTRAINED JOINT PIPE. PIPE CROSSINGS WITH LESS THAN 18" OF CLEARANCE SHALL REQUIRE A CONCRETE SADDLE TO BE PROVIDED.
  - DEFLECT PIPE JOINTS HORIZONTALLY AND/OR VERTICALLY AS NECESSARY IN ACCORDANCE WITH MANUFACTURER'S RECOMMENDATIONS TO MATCH ALIGNMENTS SHOWN.
  - PRIOR TO COMMENCING ANY WORK ON ANY TRENCHLESS INSTALLATION ON THIS PROJECT, PROVIDE A DESIGN FOR THE TRENCHLESS INSTALLATION CERTIFIED BY AN ENGINEERING LICENSED BY THE STATE OF NORTH CAROLINA, AS REQUIRED BY SUBARTICLE 1550-3(B) OF THE STANDARD SPECIFICATIONS.
  - SEQUENCE PROPOSED FILL GRADING WITH UTILITY WORK TO PROVIDE MINIMUM COVER REQUIRED FOR SEWER LINES.
  - PROVIDE MAINTENANCE AND ABANDONMENT OF 8" FORCE MAIN SEWER INSIDE PUMP STATION FENCE LINE AND 12" GRAVITY SEWER ALONG US 301 TO BE COMPLETED BY OTHERS AS PART OF NEUSE RIVER WASTEWATER PUMP STATION REPLACEMENT PROJECT.
  - CONTRACTOR SHALL MAINTAIN SEWER SERVICE TO THE NEUSE RIVER WASTEWATER PUMP STATION. COORDINATE WITH NEUSE RIVER WASTEWATER PUMP STATION REPLACEMENT PROJECT CONTRACTOR BEFORE ABANDONMENT OF EXISTING 8" FORCE MAIN SEWER.
  - CONTRACTOR SHALL KEEP EXISTING 8" FORCE MAIN SEWER OPERATIONAL UNTIL NEW 12" FORCE MAIN SEWER IS INSTALLED, TESTED, AND ACCEPTED INTO SERVICE. EXISTING 8" FORCE MAIN SEWER SHALL BE REMOVED AND DISPOSED OF WITH BRIDGE DEMOLITION.
  - CONSTRUCT FORCE MAIN SEWER FROM STA. 0+00 TO STA. 3+00 AND GRADE TO MEET COVER DURING PHASE 1 STEP 3A (SEE TRAFFIC MANAGEMENT PLANS SHEET TMP-4) COMPLETE WORK PRIOR TO DECEMBER 1, 2025. SEE INTERMEDIATE CONTRACT TIME.

11/21/2024  
 3:54:32 PM  
 S:\0086\ut\_rdy4\_uc4a\_psh\_PP