

8/17/19

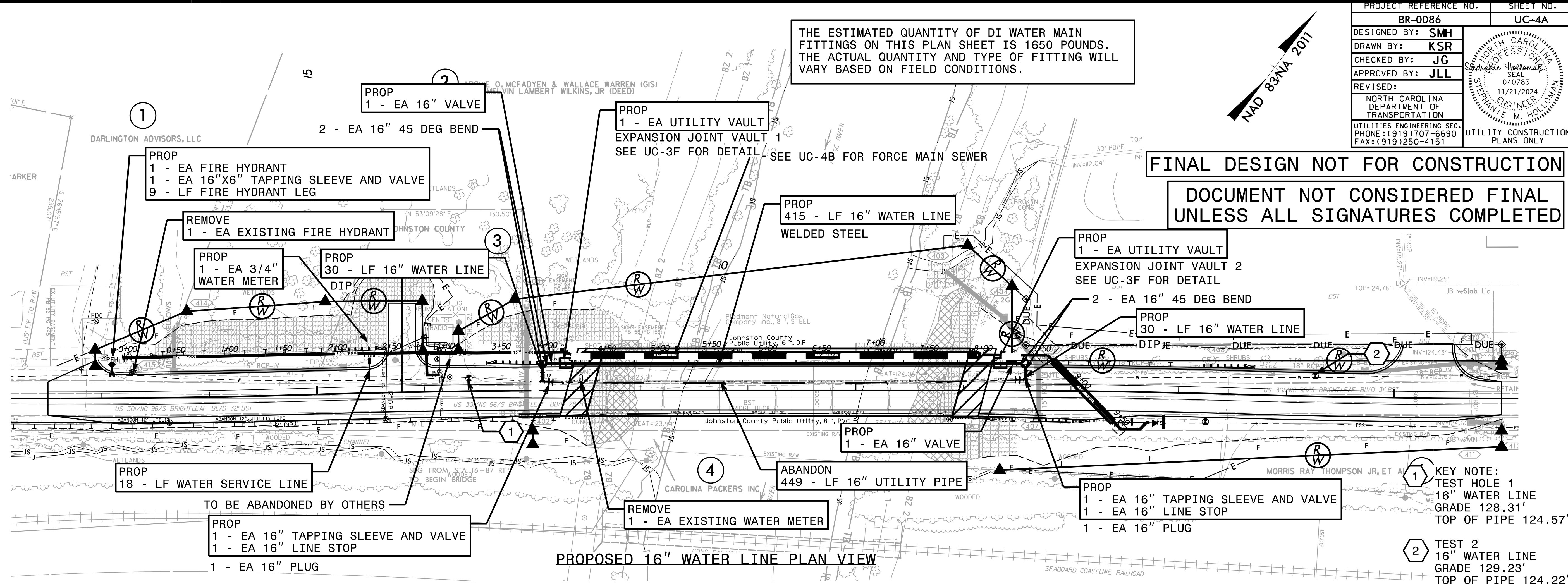
PROJECT REFERENCE NO.	SHEET NO.
BR-0086	UC-4A
DESIGNED BY: SMH	
DRAWN BY: KSR	
CHECKED BY: JG	
APPROVED BY: JLL	
REVISED:	
NORTH CAROLINA DEPARTMENT OF TRANSPORTATION	UTILITY CONSTRUCTION PLANS ONLY
UTILITIES ENGINEERING SEC. PHONE: (919) 707-6690 FAX: (919) 250-4151	



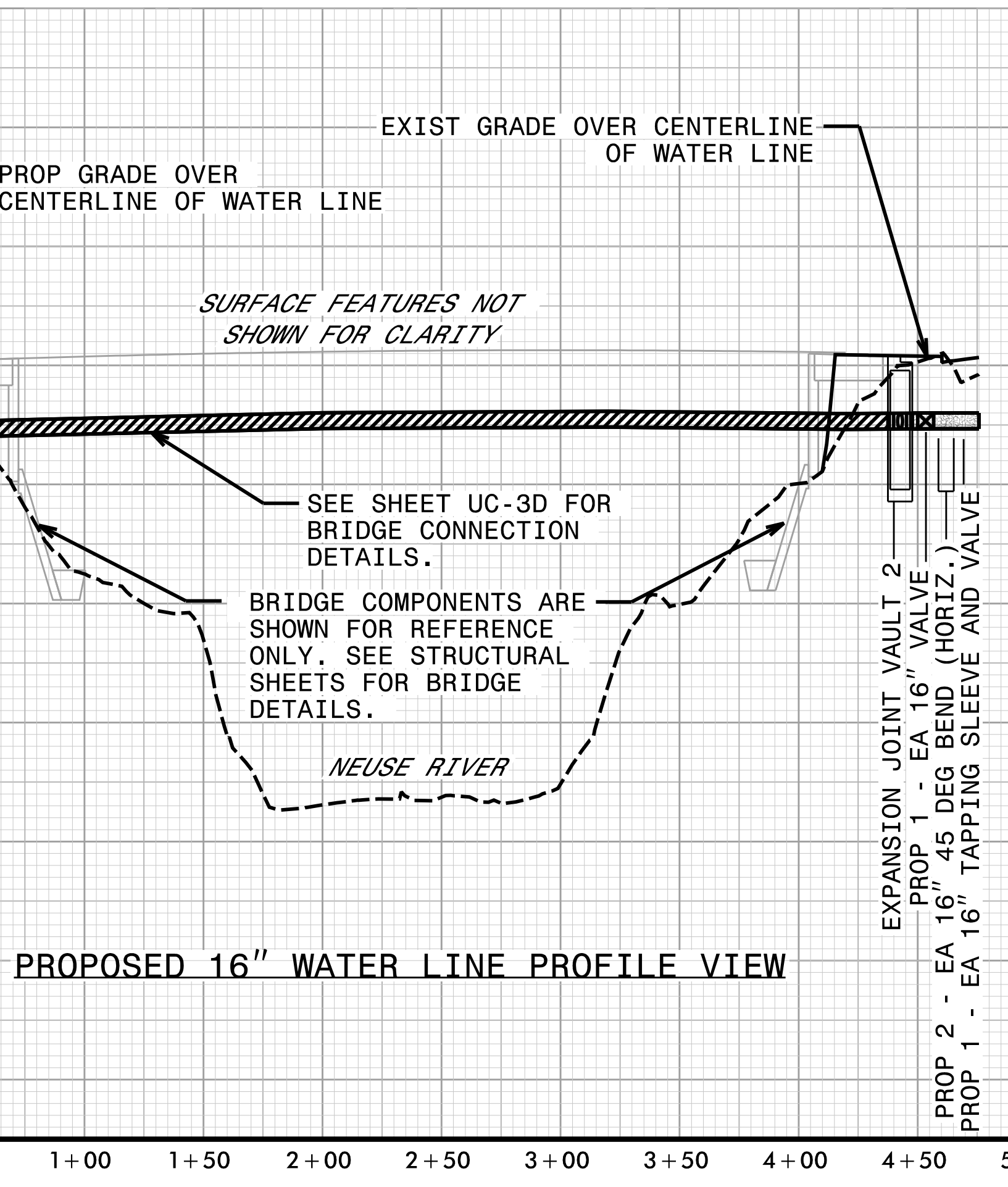
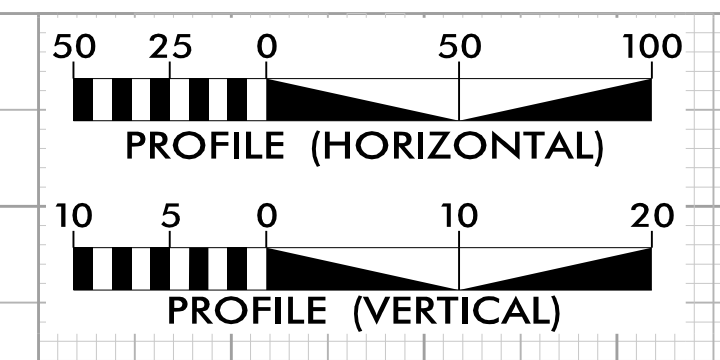
THE ESTIMATED QUANTITY OF DI WATER MAIN FITTINGS ON THIS PLAN SHEET IS 1650 POUNDS. THE ACTUAL QUANTITY AND TYPE OF FITTING WILL VARY BASED ON FIELD CONDITIONS.

**FINAL DESIGN NOT FOR CONSTRUCTION**

**DOCUMENT NOT CONSIDERED FINAL UNLESS ALL SIGNATURES COMPLETED**



PROPOSED 16" WATER LINE PLAN VIEW



PROPOSED 16" WATER LINE PROFILE VIEW

- NOTES
- DIP WATER LINE SHALL BE CLASS 350.
  - DIP WATER LINE SHALL BE CEMENT LINED IN ACCORDANCE WITH ANSI 21.4, WITH MINIMUM THICKNESS OF 3/32-INCH.
  - DIP WATER LINE SHALL BE COATED ON THE OUTSIDE WITH STANDARD BITUMINOUS COATING OF EITHER COAL TAR OR ASPHALT BASE APPROXIMATELY ONE MIL THICK. THE COATING SHALL BE CONTINUOUS, SMOOTH, AND STRONGLY ADHERENT TO THE PIPE AND SHALL NOT BECOME BRITTLE FROM COLD OR STICKY FROM HEAT.
  - ALL BENDS, FITTINGS, AND SPECIALS SHALL BE RESTRAINED JOINT TYPE.
  - BLOCKING AND BRACING SHALL BE USED IN CONJUNCTION WITH RESTRAINED JOINT PIPE.
  - PIPE CROSSINGS WITH LESS THAN 18" OF CLEARANCE SHALL REQUIRE A CONCRETE SADDLE TO BE PROVIDED.
  - DEFLECT PIPE JOINTS HORIZONTALLY AND/OR VERTICALLY AS NECESSARY IN ACCORDANCE WITH MANUFACTURER'S RECOMMENDATIONS TO MATCH ALIGNMENTS SHOWN.
  - SEQUENCE PROPOSED FILL GRADING WITH UTILITY WORK TO PROVIDE MINIMUM COVER REQUIRED FOR WATER LINES.
  - CONTRACTOR SHALL MAINTAIN WATER SERVICE TO THE NEUSE RIVER WASTEWATER PUMP STATION. COORDINATE WITH NEUSE RIVER WASTEWATER PUMP STATION REPLACEMENT PROJECT CONTRACTOR FOR ABANDONMENT OF EXISTING SERVICE AND METER.
  - CONTRACTOR SHALL KEEP EXISTING 16" WATER LINE OPERATIONAL UNTIL NEW 16" WATER LINE IS INSTALLED, TESTED, AND ACCEPTED INTO SERVICE. EXISTING 16" WATER LINE SHALL BE REMOVED AND DISPOSED OF WITH BRIDGE DEMOLITION.

REVISIONS

11/21/2024  
 S:\Projects\BR0086.ut.rd\4\_uc4\_psh.ppt  
 8/17/19