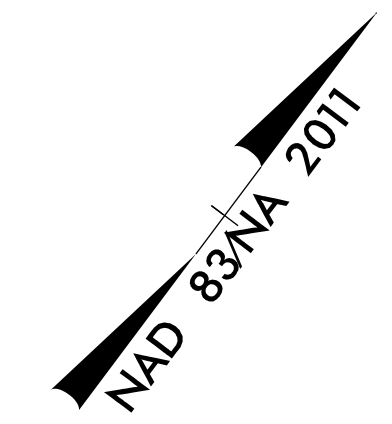
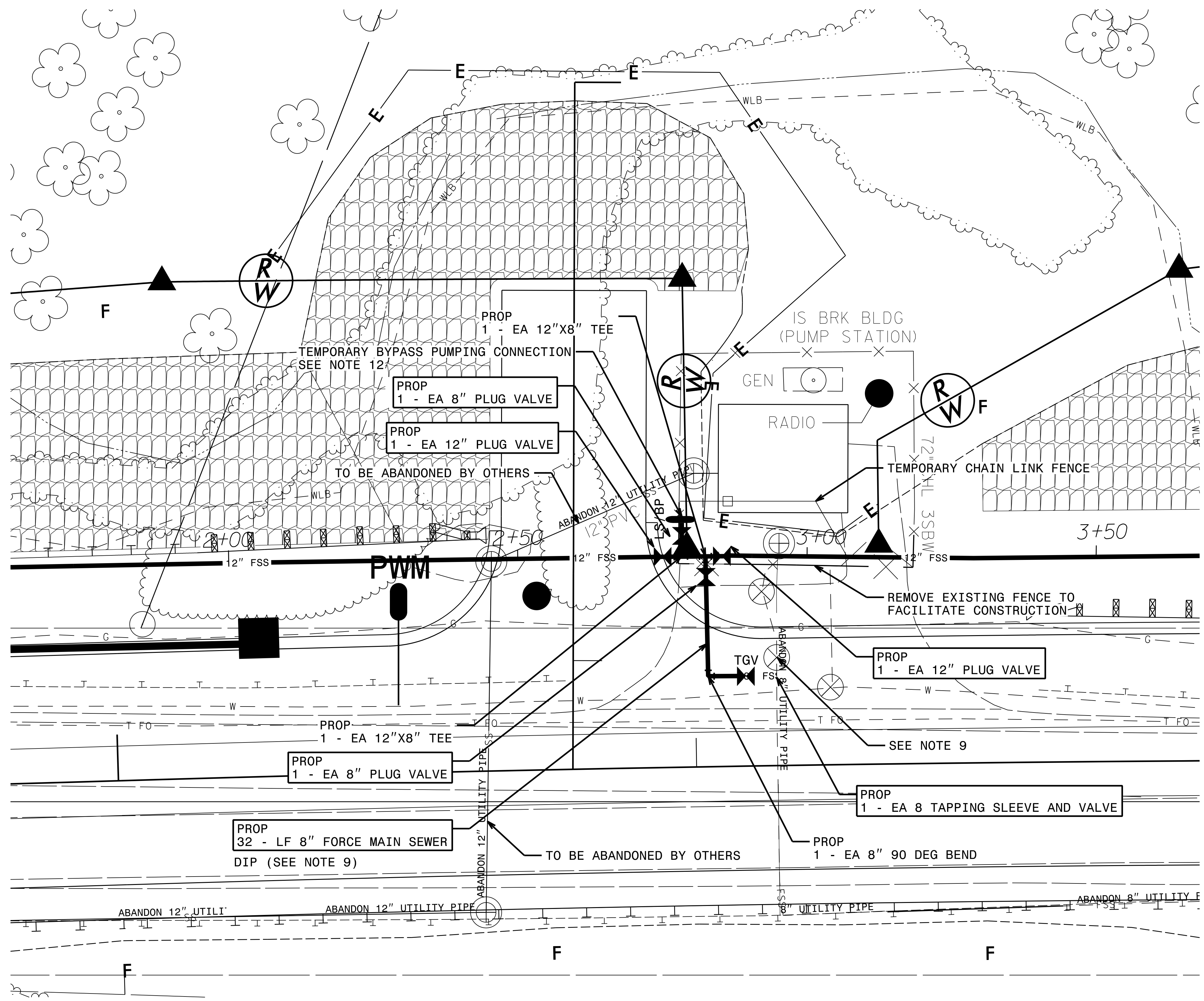


PROJECT REFERENCE NO.	SHEET NO.
BR-0086	UC-3G
DESIGNED BY: SMH	
DRAWN BY: KSR	
CHECKED BY: JG	
APPROVED BY: JLL	
REVISED:	
NORTH CAROLINA DEPARTMENT OF TRANSPORTATION UTILITIES ENGINEERING SEC. PHONE: (919) 707-6690 FAX: (919) 250-4151	
UTILITY CONSTRUCTION PLANS ONLY	



FINAL DESIGN NOT FOR CONSTRUCTION

DOCUMENT NOT CONSIDERED FINAL UNLESS ALL SIGNATURES COMPLETED



NOTES

- 8" FORCE MAIN SEWER SHALL BE CLASS 350 DIP.
- DIP IN SEWER SERVICE SHALL HAVE AN INTERIOR LINING OF PROTECTO 401 OR APPROVED EQUAL.
- PROVIDE POLYETHYLENE ENCASMENT ON DIP.
- 12" FORCE MAIN SEWER SHALL BE DR-25 PVC.
- ALL PIPING JOINTS, BENDS, FITTINGS, AND SPECIALS SHALL BE RESTRAINED JOINT TYPE.
- BLOCKING AND BRACING SHALL BE USED IN CONJUNCTION WITH RESTRAINED JOINT PIPE.
- PIPE CROSSINGS WITH LESS THAN 18" OF CLEARANCE SHALL REQUIRE A CONCRETE SADDLE TO BE PROVIDED.
- DEFLECT PIPE JOINTS HORIZONTALLY AND/OR VERTICALLY AS NECESSARY IN ACCORDANCE WITH MANUFACTURER'S RECOMMENDATIONS TO MATCH ALIGNMENTS SHOWN.
- CLOSE EXISTING VALVE. THIS SEGMENT OF PIPE WILL SERVE AS A TEMPORARY CONNECTION TO THE EXISTING 8-INCH FORCE MAIN UNTIL THE 12-INCH FORCE MAIN ACROSS THE BRIDGE IS READY FOR SERVICE.
- DEMOLITION AND ABANDONMENT OF 8" FORCE MAIN SEWER INSIDE PUMP STATION FENCE LINE AND 12" GRAVITY SEWER ALONG US 301 TO BE COMPLETED BY OTHERS AS PART OF NEUSE RIVER WASTEWATER PUMP STATION REPLACEMENT PROJECT.
- CONTRACTOR SHALL MAINTAIN SEWER SERVICE TO THE NEUSE RIVER WASTEWATER PUMP STATION. COORDINATE WITH NEUSE RIVER WASTEWATER PUMP STATION REPLACEMENT PROJECT CONTRACTOR BEFORE ABANDONMENT OF EXISTING 8" FORCE MAIN SEWER. UPON COMPLETION OF CONSTRUCTION, CLOSE BURIED VALVE, REMOVE VALVE BOX, AND PROVIDE RJ PLUG ON VALVE.

EXISTING PUMP STATION AND FORCE MAIN TIE-IN PLAN