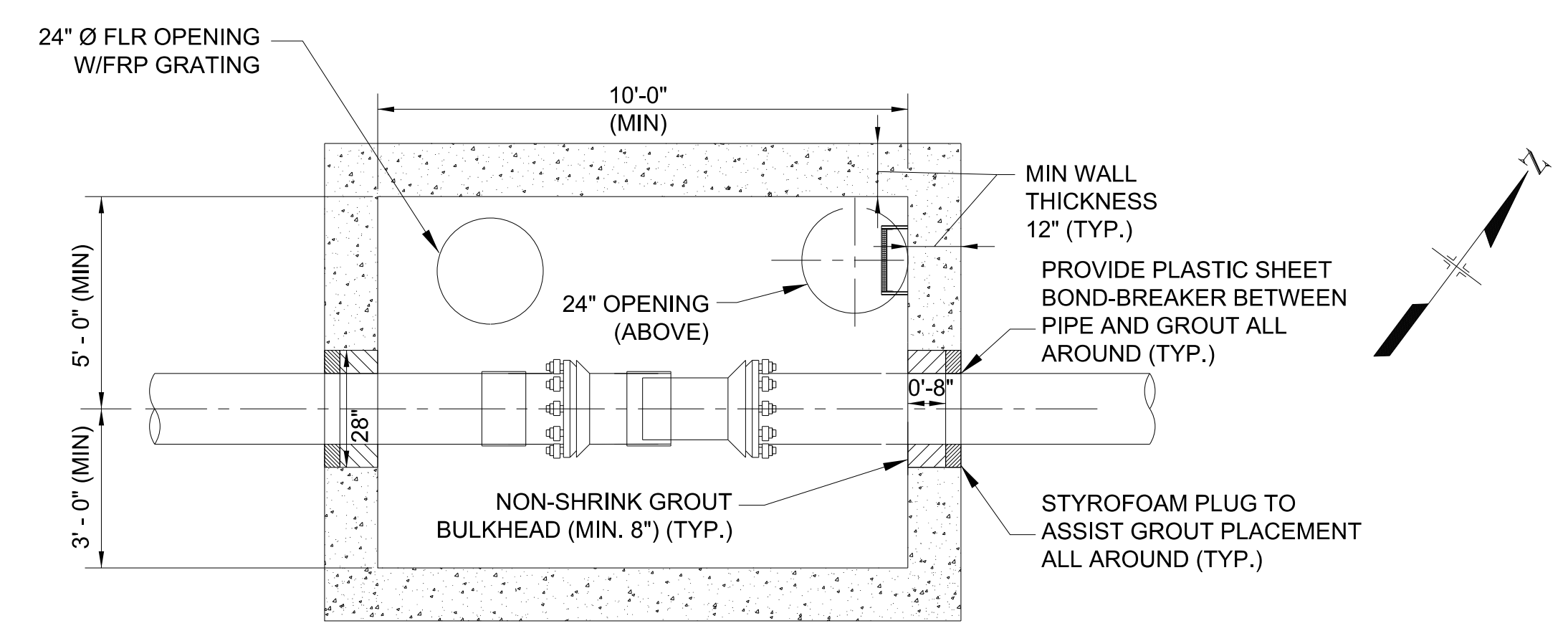


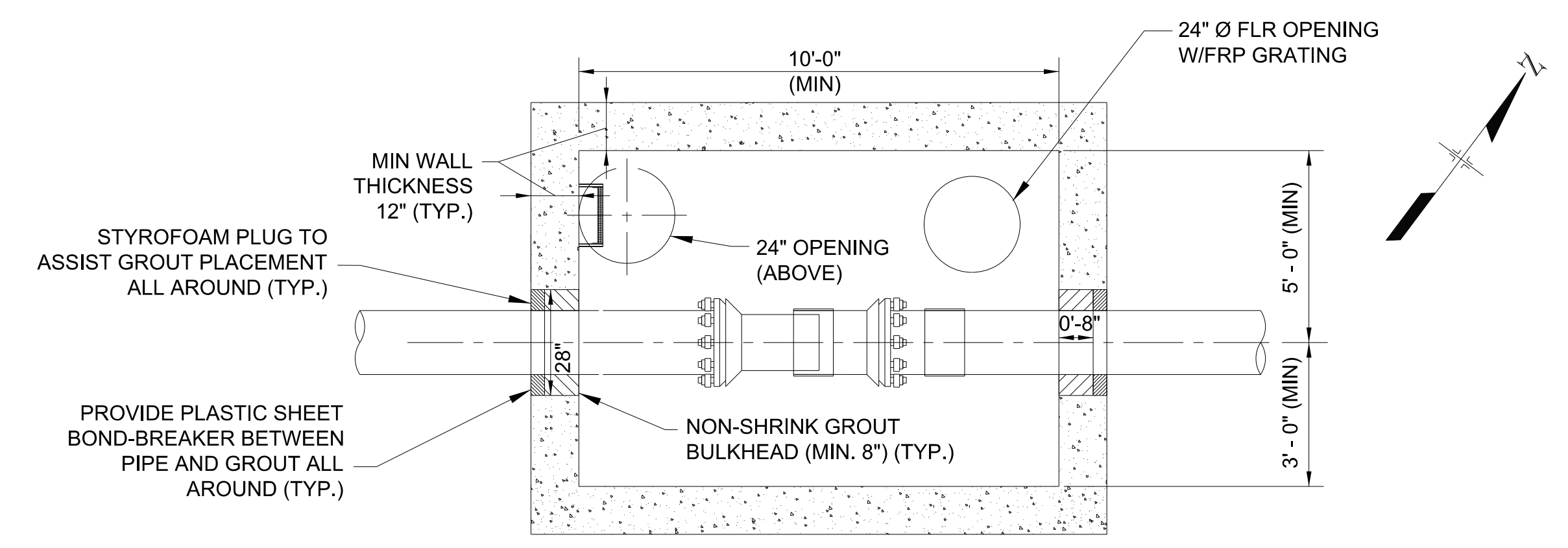
PROJECT REFERENCE NO.	SHEET NO.
BR-0086	UC-3F
DESIGNED BY: SMH	
DRAWN BY: KSR	
CHECKED BY: JG	
APPROVED BY: JLL	
REVISED:	
NORTH CAROLINA DEPARTMENT OF TRANSPORTATION UTILITIES ENGINEERING SEC. PHONE: (919) 707-6690 FAX: (919) 250-4151	
UTILITY CONSTRUCTION PLANS ONLY	

**FINAL DESIGN NOT FOR CONSTRUCTION**

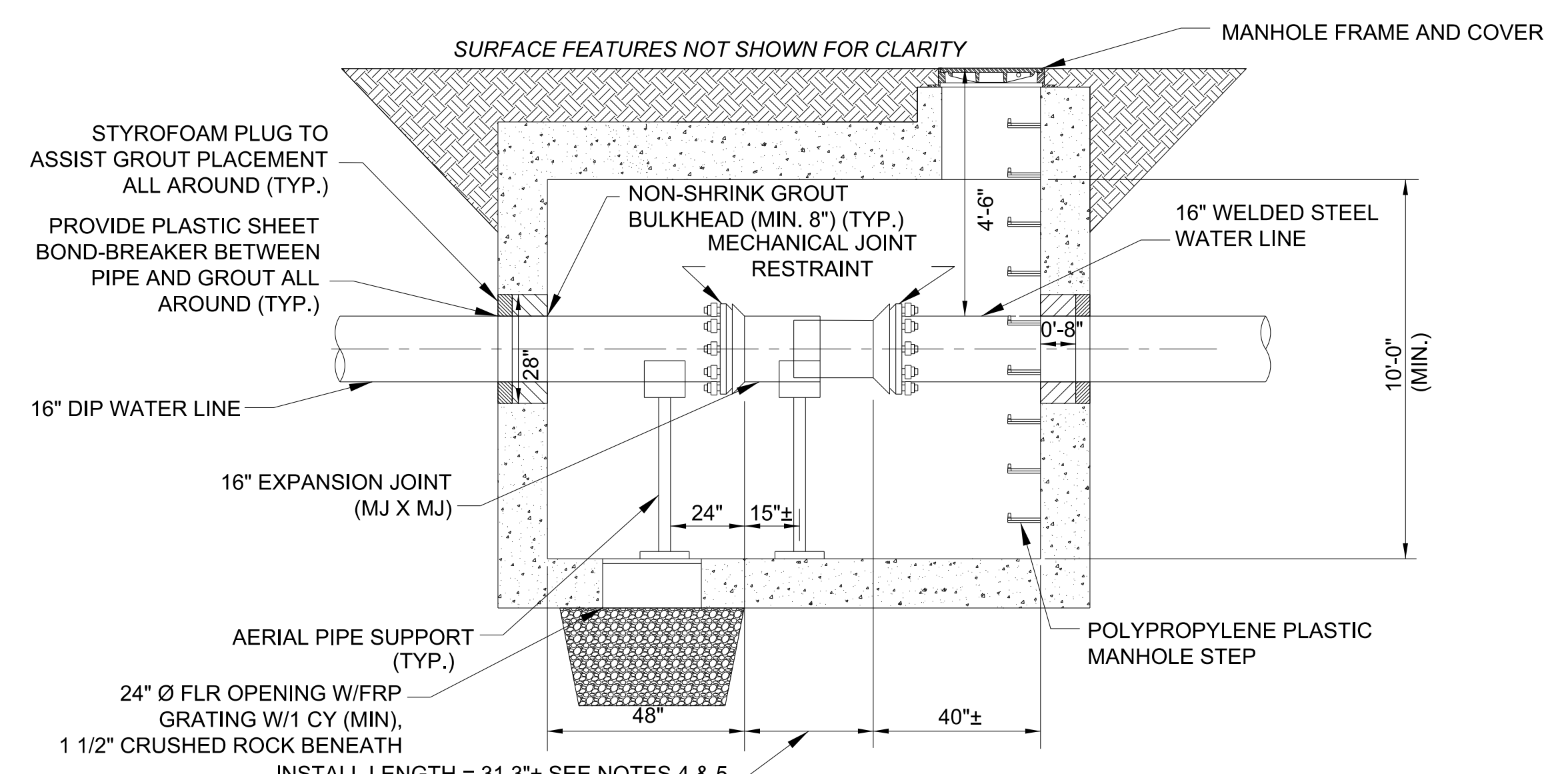
**DOCUMENT NOT CONSIDERED FINAL UNLESS ALL SIGNATURES COMPLETED**



**PLAN**  
NOT TO SCALE

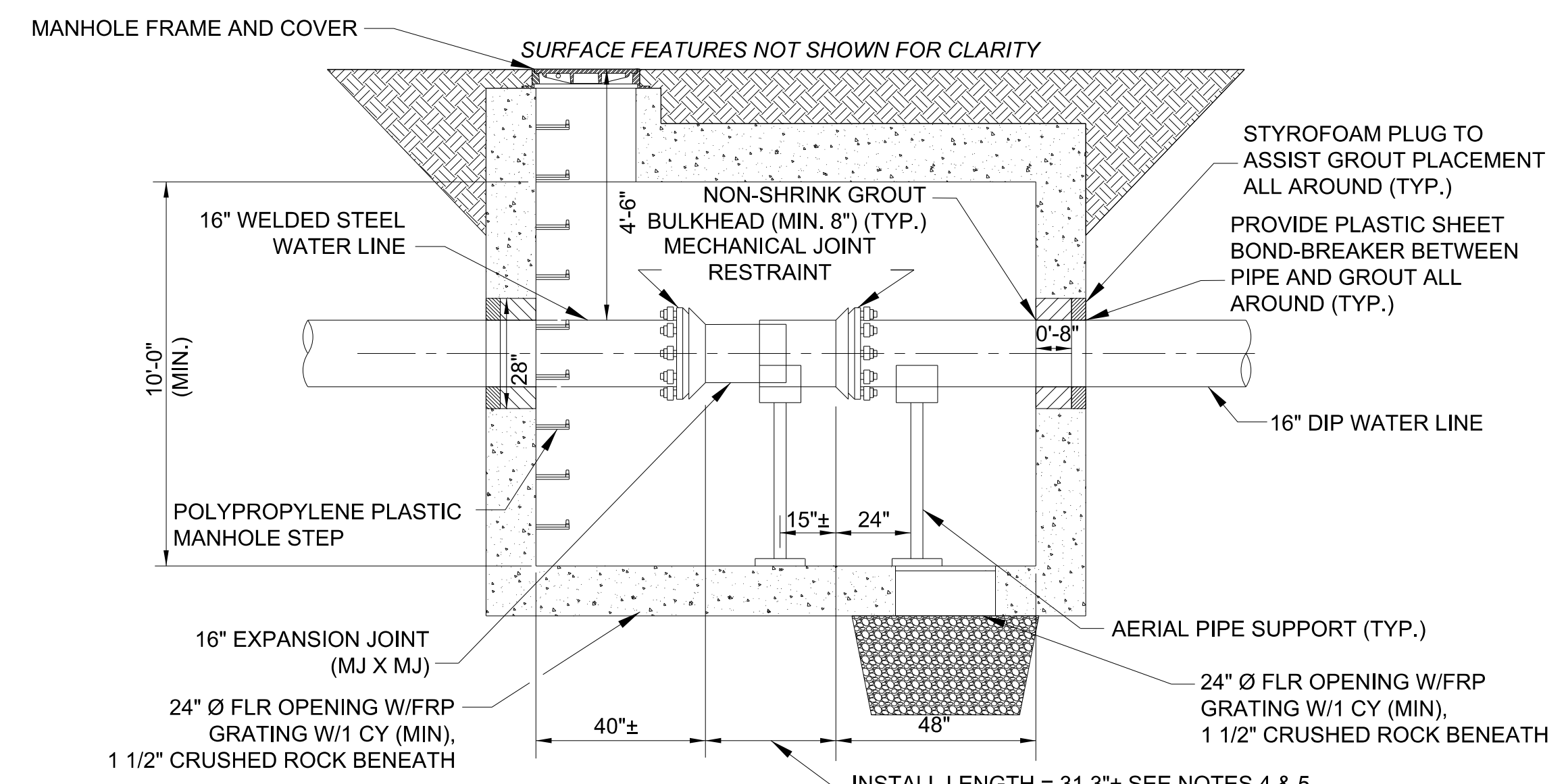


**PLAN**  
NOT TO SCALE



**SECTION**  
NOT TO SCALE

**EXPANSION JOINT VAULT 1**



**SECTION**  
NOT TO SCALE

**EXPANSION JOINT VAULT 2**

**NOTES**

- FINAL POSITION OF THE EXPANSION JOINT VAULT SHALL BE FIELD ADJUSTED SUCH THAT IT MINIMIZES IMPACT TO THE ROADWAY AND SURROUNDING FEATURES.
- EXPANSION JOINT VAULTS SHALL BE PRECAST, RATED FOR AASHTO HS-20 LIVE LOAD WITH TRAFFIC -BEARING MANHOLE FRAMES OR RINGS WITH COVERS, FOR DELIBERATE HEAVY VEHICULAR TRAFFIC APPLICATIONS.
- THE TOP AND SIDES OF THE VAULT EXTERIOR SHALL BE COATED WITH TNEMEC COAL TAR SERIES 46-465.
- EXPANSION JOINT SHALL BE EBAA SERIES 200 EX-TEND (MODEL 216M0); OR APPROVED EQUAL. CONTRACTOR SHALL VERIFY THE DIMENSIONS OF THE EXPANSION JOINT COUPLING AND MODIFY THE VAULT DIMENSIONS AS NEEDED TO ACCOMMODATE THE EXPANSION JOINT.
- EXPANSION JOINT MANUFACTURER'S REP SHALL BE ONSITE DURING FIELD INSTALLATION OF EXPANSION JOINT. EXPANSION JOINT INSTALLED LENGTH AND PIPE PIPE PENETRATION INTO VAULT SHALL BE ADJUSTED BASED ON TEMPERATURE CONDITIONS. EXPANSION JOINT SHALL BE INSTALLED PER MANUFACTURER INSTRUCTION.
- EXPANSION JOINT VAULT ROOF SLAB SHALL BE REMOVABLE.
- WRAP ALL DI PIPE AND FITTINGS IN POLYETHYLENE (EXCEPT THE EXPANSION JOINT).