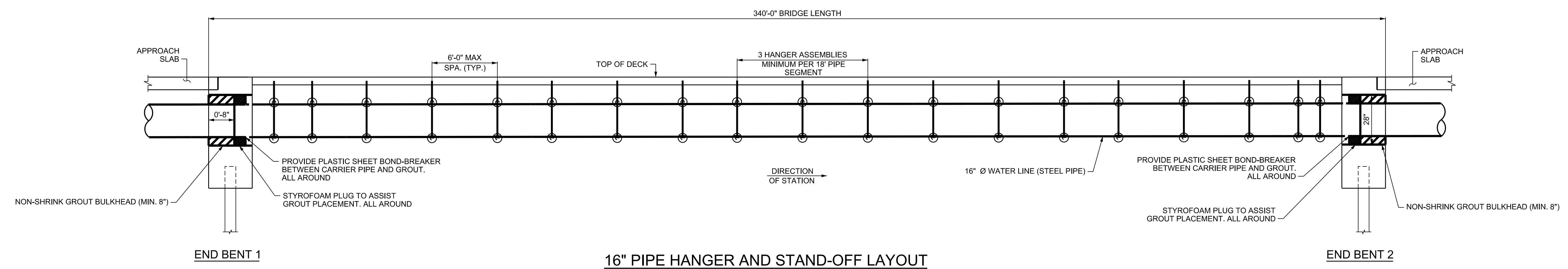


PROJECT REFERENCE NO.	SHEET NO.
BR-0086	UC-3D
DESIGNED BY: SMH	
DRAWN BY: KSR	
CHECKED BY: JG	
APPROVED BY: JLL	
REVISED:	
NORTH CAROLINA DEPARTMENT OF TRANSPORTATION UTILITIES ENGINEERING SEC. PHONE: (919) 707-6690 FAX: (919) 250-4151	
UTILITY CONSTRUCTION PLANS ONLY	

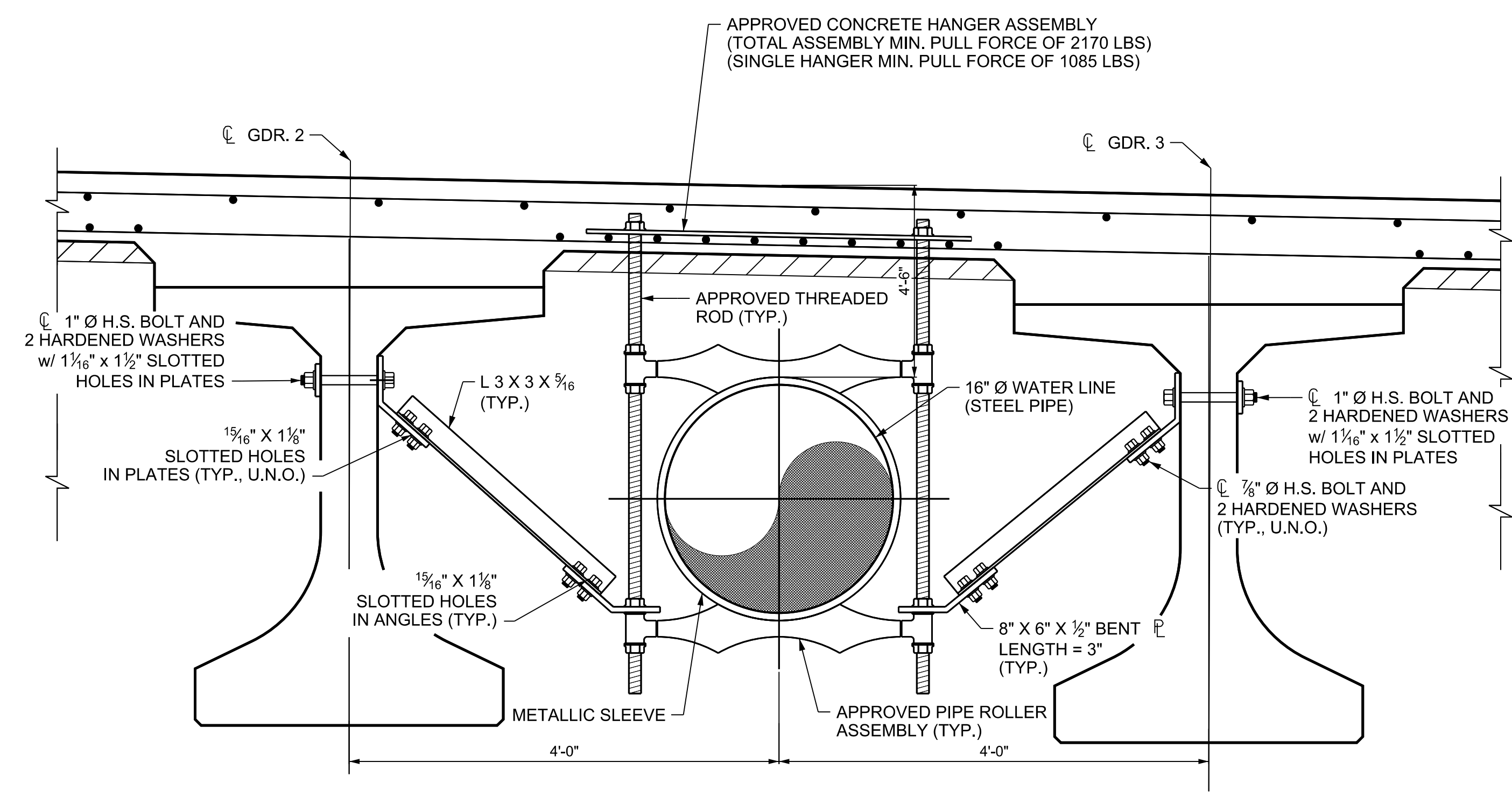
**FINAL DESIGN NOT FOR CONSTRUCTION**

**DOCUMENT NOT CONSIDERED FINAL  
UNLESS ALL SIGNATURES COMPLETED**



**16" PIPE HANGER AND STAND-OFF LAYOUT**

NOT TO SCALE  
(GIRDERS AND INTERIOR BENTS NOT SHOWN FOR CLARITY)



**16" PIPE HANGER AND STAND-OFF DETAIL**

NOT TO SCALE

**NOTES**

1. THE PLATES, BENT PLATES, ANGLES, HIGH STRENGTH BOLTS, NUTS, WASHERS, THREADED RODS, AND ROLLER ASSEMBLIES SHALL BE 304 STAINLESS STEEL.
2. THE METALLIC SLEEVE AROUND THE PIPE THAT COMES INTO CONTACT WITH THE ROLLER SHALL BE 304 STAINLESS STEEL WITH NYLON BACKING FOR ADDITIONAL CORROSION PROTECTION.
3. APPROVED STRUCTURAL INSERTS SHALL NOT BE PLACED IN THE VALLEYS OF THE METAL SIP FORMS.
4. BRIDGE COMPONENTS ARE SHOWN FOR REFERENCE ONLY. SEE STRUCTURAL SHEETS FOR BRIDGE DETAILS.