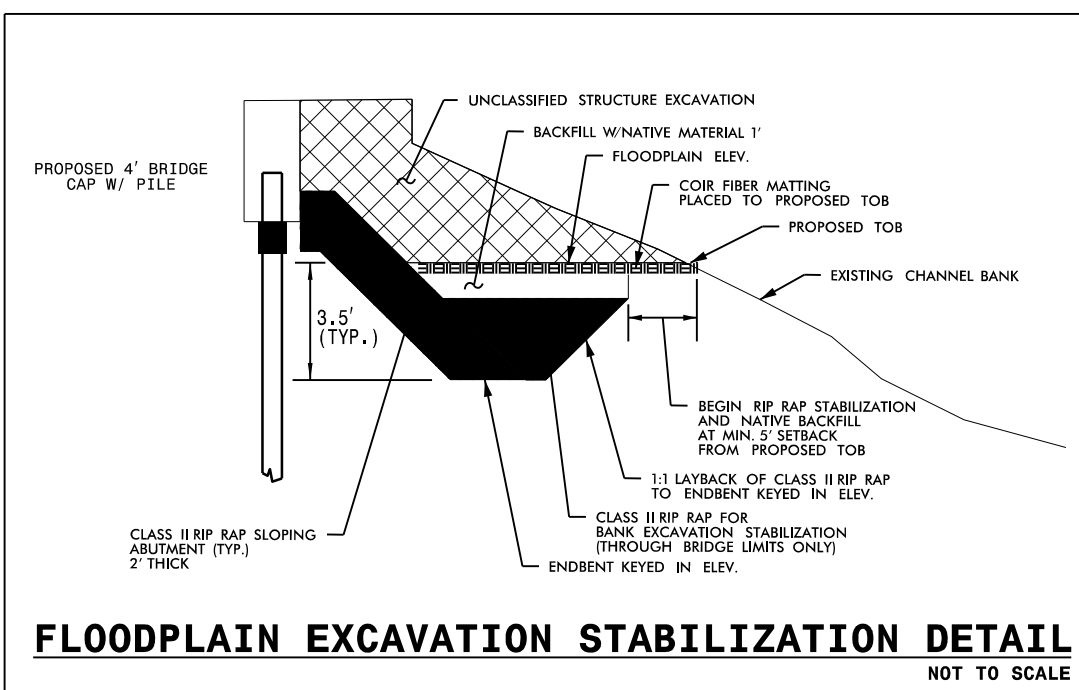
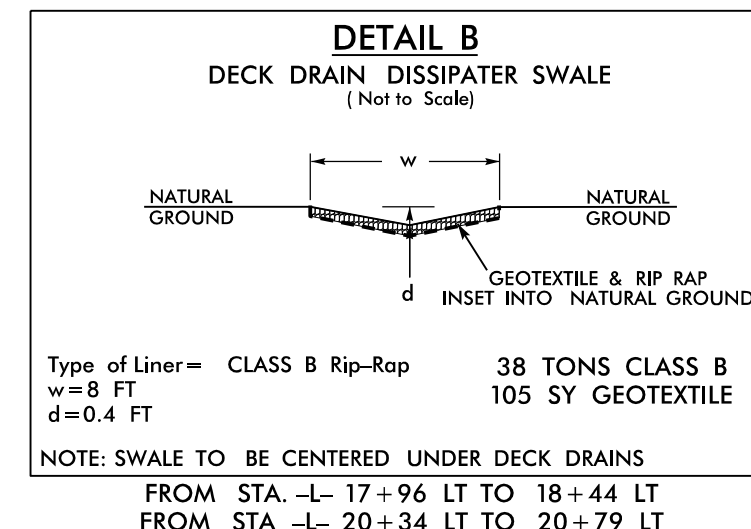
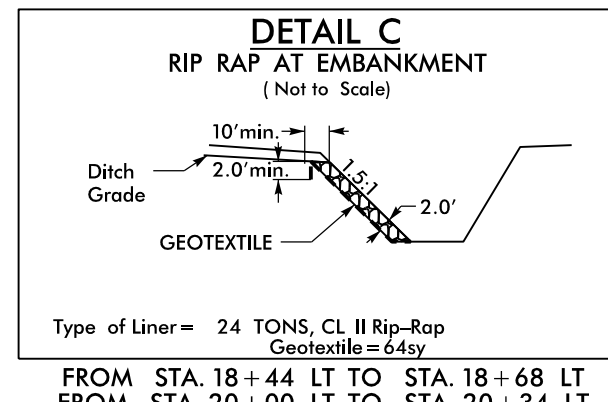
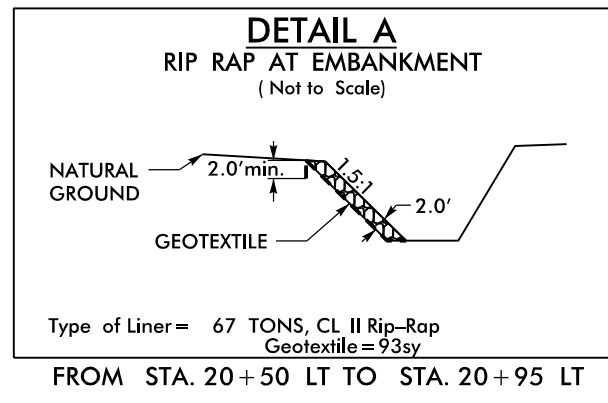


Place Matting for Erosion Control on Slopes Adjacent to Permitted Wetlands as Work Allows.

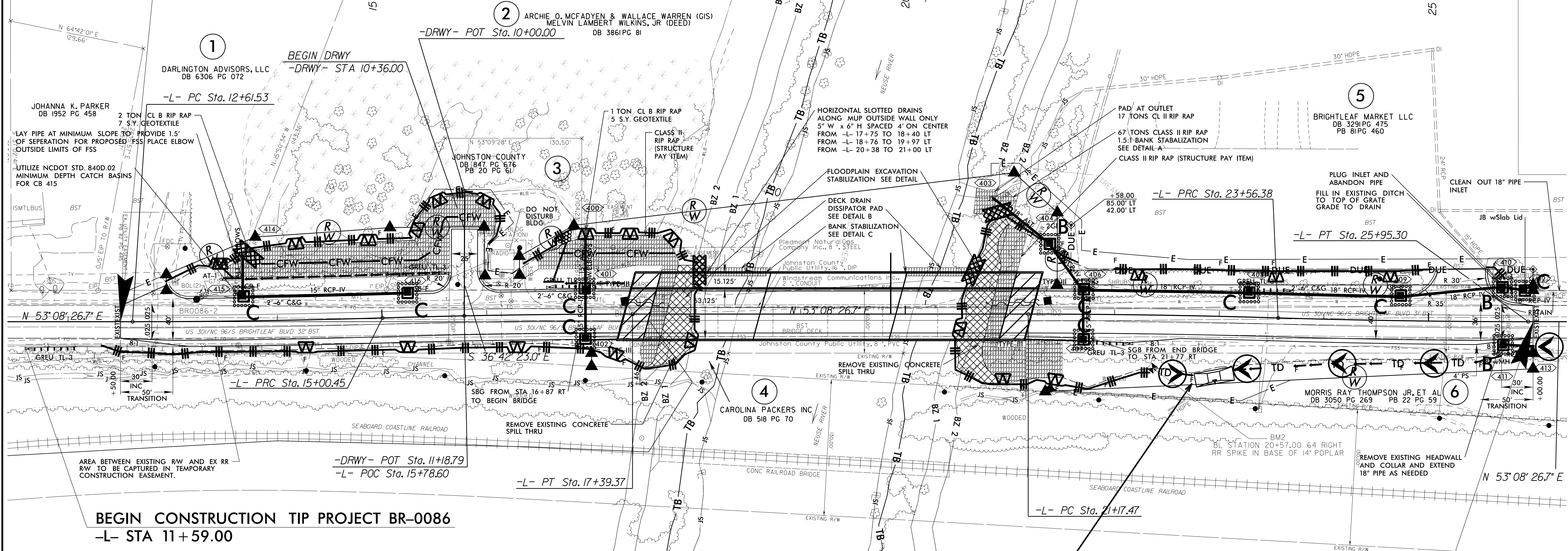


- DETAIL NOTES:**
1. FOR USE WHERE EXISTING ABUTMENTS AND BULKHEADS ARE TO BE COMPLETELY REMOVED
 2. EXCAVATE TO FLOODPLAIN ELEVATION AS SPECIFIED ON PRELIMINARY GENERAL DRAWINGS
 3. FLOODPLAIN STABILIZATION TO BEGIN WITH A 5' MINIMUM SETBACK FROM PROPOSED TOB
 4. FOR ALL LOCATIONS OF CLASS II RIPRAP, FILL VOIDS WITH CLASS B RIP RAP
 5. COIR FIBER MATTING TO BE INSTALLED OVER LIMITS OF FLOODPLAIN EXCAVATION AND AREAS BACKFILLED WITH NATIVE MATERIAL



Place Matting for Erosion Control on Slope as Work Allows. Sta. 21+00 to Sta. 25+00 LT if fill is too close to existing pavement to install silt fence

BEGIN TIP PROJECT BR-0086 -L- STA 12+50.00



BEGIN CONSTRUCTION TIP PROJECT BR-0086 -L- STA 11+59.00

Place Matting for Erosion Control on Slope as Work Allows. Sta. 12+50 to Sta. 15+50

END TIP PROJECT BR-0086 -L- STA 26+00.00

Place Matting for Erosion Control on Slope as Work Allows. Sta. 21+00 to Sta. 25+00 RT

13 x 37 x 3 1.5 inch Skimmer with 0.5 inch Orifice Diameter 4 ft. weir ID 4.1

NOTE: UTILIZE TEMPORARY SEDIMENT BASIN OR SPECIAL STILLING BASIN(S) AS STILLING BASIN WHERE APPLICABLE.