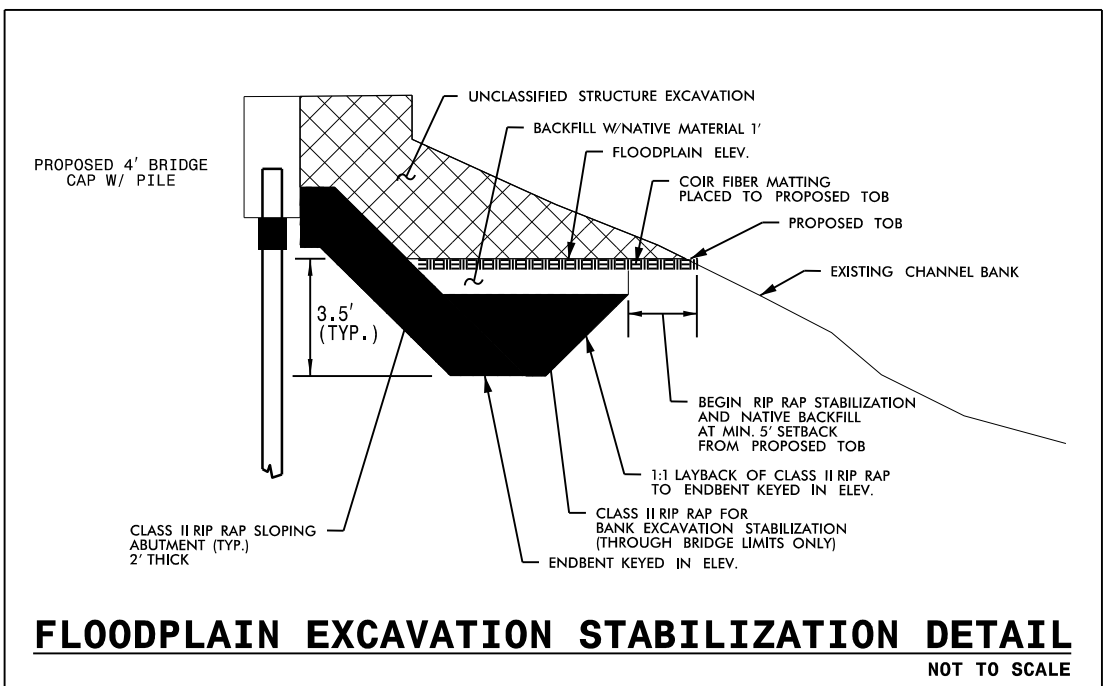
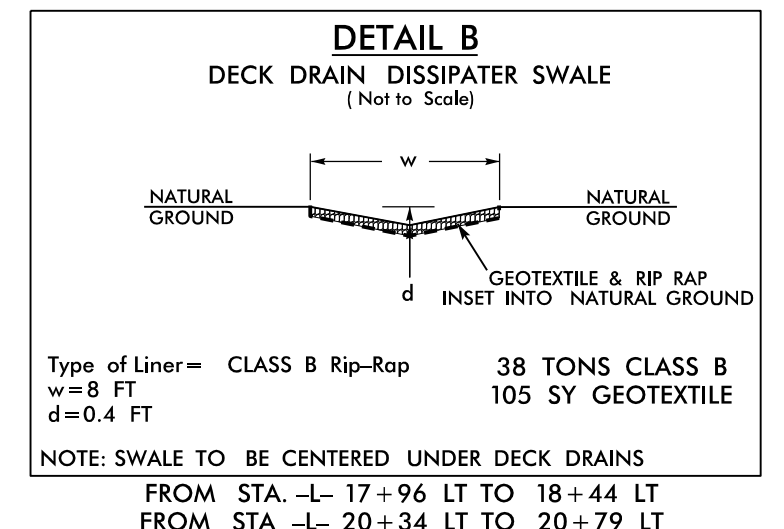
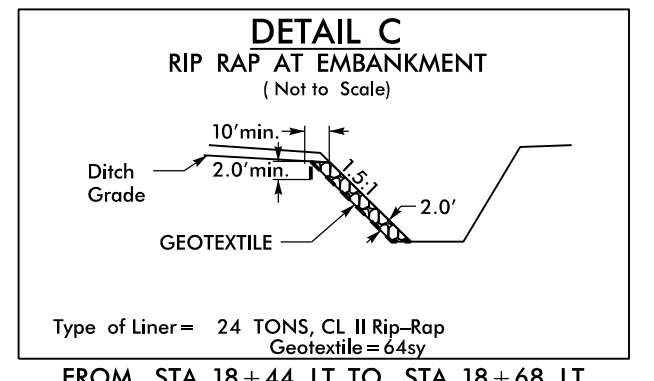
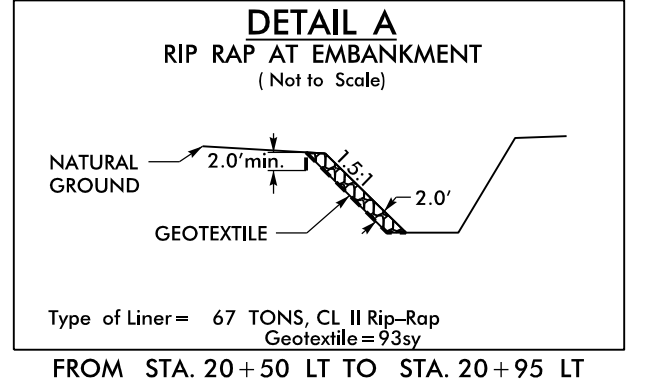


PROJECT REFERENCE NO.	SHEET NO.
BR-0086	EC-04/CONST.04
RW SHEET NO.	
ROADWAY DESIGN ENGINEER	HYDRAULICS ENGINEER



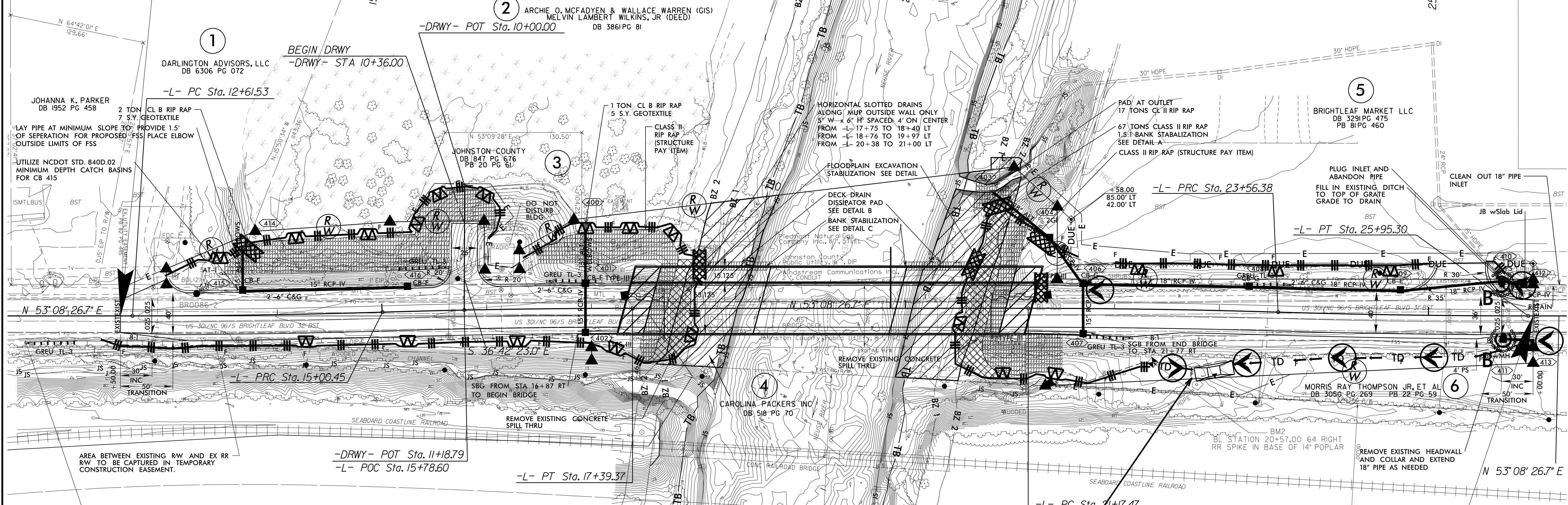
- DETAIL NOTES:**
- FOR USE WHERE EXISTING ABUTMENTS AND BULKHEADS ARE TO BE COMPLETELY REMOVED
  - EXCAVATE TO FLOODPLAIN ELEVATION AS SPECIFIED ON PRELIMINARY GENERAL DRAWINGS
  - FLOODPLAIN STABILIZATION TO BEGIN WITH A 5' MINIMUM SETBACK FROM PROPOSED TOB
  - FOR ALL LOCATIONS OF CLASS II RIPRAP, FILL VOIDS WITH CLASS B RIP RAP
  - COIR FIBER MATTING TO BE INSTALLED OVER LIMITS OF FLOODPLAIN EXCAVATION AND AREAS BACKFILLED WITH NATIVE MATERIAL



**NAD 83/NA 2011**

**CLEARING AND GRUBBING EROSION CONTROL FOR CONSTRUCTION SHEET 4**

**BEGIN TIP PROJECT BR-0086**  
-L- STA 12+50.00



**BEGIN CONSTRUCTION TIP PROJECT BR-0086**  
-L- STA 11+59.00

**END TIP PROJECT BR-0086**  
-L- STA 26+00.00

**NOTE:**  
PLACE TEMPORARY ROCK SEDIMENT DAMS TYPE - B AND TEMPORARY ROCK SILT CHECKS TYPE - A AT DRAINAGE OUTLETS.

ENVIRONMENTALLY SENSITIVE AREA  
SEE PROJECT SPECIAL PROVISIONS

**NOTE:**  
UTILIZE TEMPORARY SEDIMENT BASIN OR SPECIAL STILLING BASIN(S) AS STILLING BASIN WHERE APPLICABLE.

**13 x 37 x 3**  
**1.5 inch Skimmer**  
**with 0.5 inch**  
**Orifice Diameter**  
**4 ft. weir**  
**ID 4.1**

27-SEP-2024 17:52 R:\Environment\1\Design\BR0086\_EC\_psh4.dgn