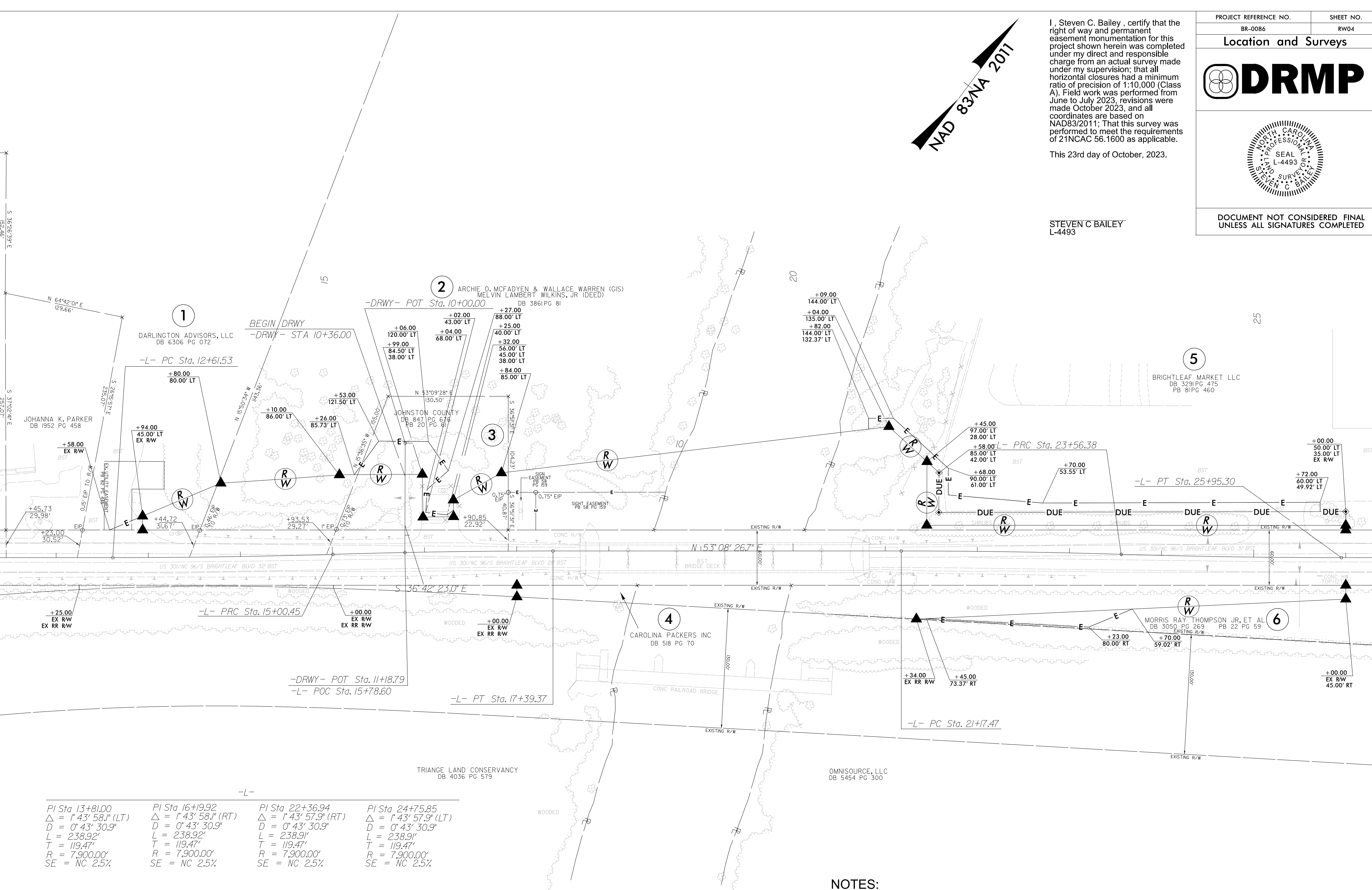


6/2/2019

REVISIONS  
P:\PROJECTS\2023\07\25\00107\016\_BR0086.con\_drm2\Surveying\_and\_Mapping\Working\_NewSheets\BR0086\_rw04.dgn  
SBAILEY



**NAD 83/NA 2011**

I, Steven C. Bailey, certify that the right of way and permanent easement monumentation for this project shown herein was completed under my direct and responsible charge from an actual survey made under my supervision; that all horizontal closures had a minimum ratio of precision of 1:10,000 (Class A). Field work was performed from June to July 2023, revisions were made October 2023, and all coordinates are based on NAD83/2011; That this survey was performed to meet the requirements of 21NCAC 56.1600 as applicable.

This 23rd day of October, 2023.

STEVEN C. BAILEY  
L-4493

PROJECT REFERENCE NO. BR-0086	SHEET NO. RW04
<b>Location and Surveys</b>	
DOCUMENT NOT CONSIDERED FINAL UNLESS ALL SIGNATURES COMPLETED	

PI Sta 13+81.00 Δ = 1° 43' 58.1" (LT) D = 0° 43' 30.9" L = 238.92' T = 119.47' R = 7,900.00' SE = NC 2.5%	PI Sta 16+19.92 Δ = 1° 43' 58.1" (RT) D = 0° 43' 30.9" L = 238.92' T = 119.47' R = 7,900.00' SE = NC 2.5%	PI Sta 22+36.94 Δ = 1° 43' 57.9" (RT) D = 0° 43' 30.9" L = 238.91' T = 119.47' R = 7,900.00' SE = NC 2.5%	PI Sta 24+75.85 Δ = 1° 43' 57.9" (LT) D = 0° 43' 30.9" L = 238.91' T = 119.47' R = 7,900.00' SE = NC 2.5%
---	---	---	---

**NOTES:**

1. IF FURTHER INFORMATION REGARDING PROJECT CONTROL IS NEEDED PLEASE CONTACT THE LOCATION AND SURVEYS UNIT.
2. PROJECT CONTROL WAS ESTABLISHED USING GNSS, THE GLOBAL NAVIGATION SATELLITE SYSTEM.
3. RIGHT OF WAY MONUMENTATION ESTABLISHED JUNE 2023 TO JULY 2023. REVISIONS MADE OCTOBER 2023.