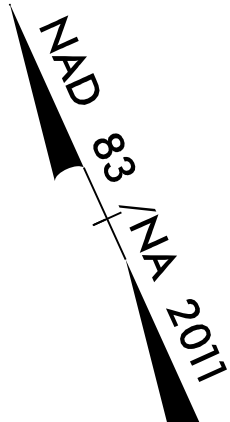
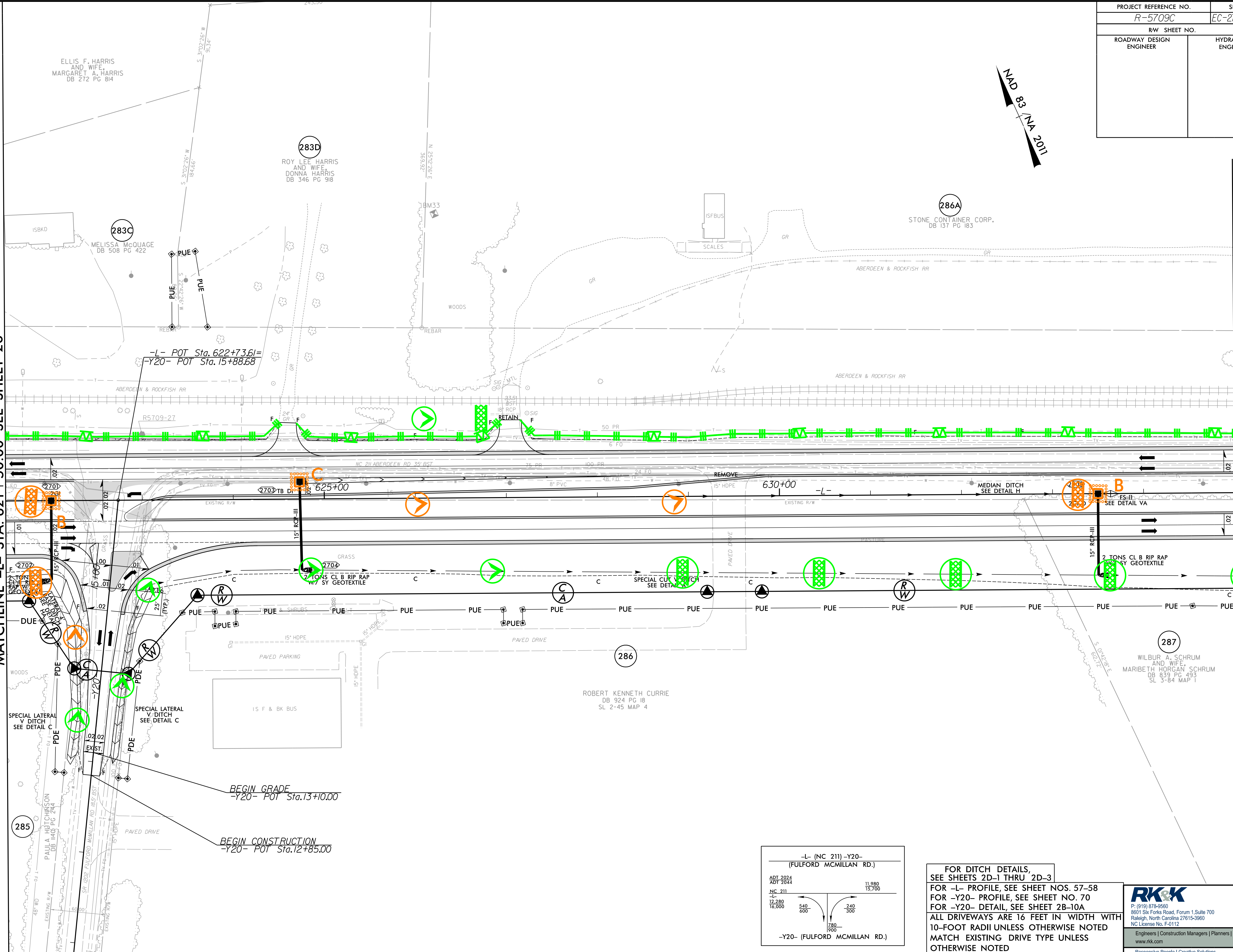


PROJECT REFERENCE NO. R-5709C	SHEET NO. EC-27/CONST.27
RW SHEET NO.	
ROADWAY DESIGN ENGINEER	HYDRAULICS ENGINEER



MATCHLINE -L- STA. 621 + 50.00 SEE SHEET 26

MATCHLINE -L- STA. 635 + 00.00 SEE SHEET 28



ELLIS F. HARRIS AND WIFE
MARGARET A. HARRIS
DB 272 PG 814

283D
ROY LEE HARRIS AND WIFE
DONNA HARRIS
DB 346 PG 918

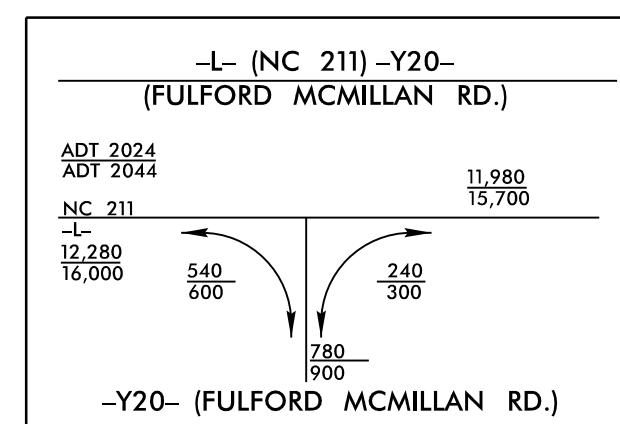
283C
MELISSA McQUAGE
DB 508 PG 422

286A
STONE CONTAINER CORP.
DB 137 PG 183

287
WILBUR A. SCHRUM AND WIFE
MARIBETH HORGAN SCHRUM
DB 839 PG 493
SL 3-84 MAP 1

286
ROBERT KENNETH CURRIE
DB 924 PG 18
SL 2-45 MAP 4

285
PAULA HITCHCOXSON
DB 140 PG 214

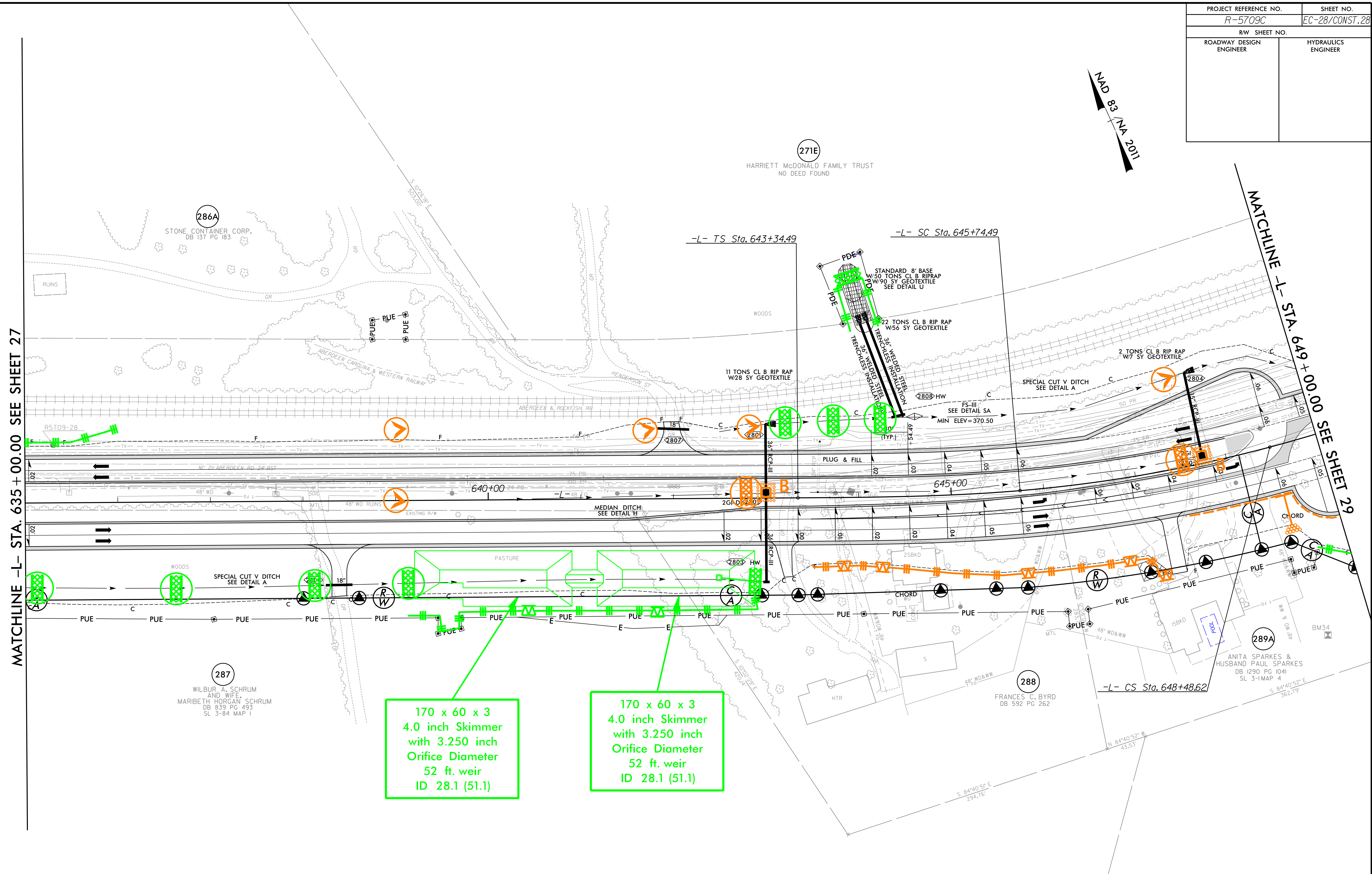
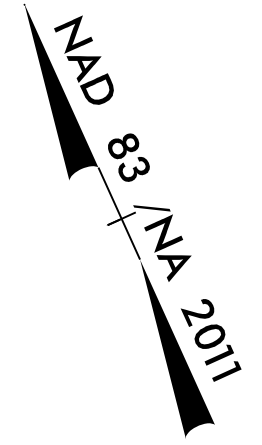


FOR DITCH DETAILS, SEE SHEETS 2D-1 THRU 2D-3
 FOR -L- PROFILE, SEE SHEET NOS. 57-58
 FOR -Y20- PROFILE, SEE SHEET NO. 70
 FOR -Y20- DETAIL, SEE SHEET 2B-10A
 ALL DRIVEWAYS ARE 16 FEET IN WIDTH WITH 10-FOOT RADII UNLESS OTHERWISE NOTED
 MATCH EXISTING DRIVE TYPE UNLESS OTHERWISE NOTED

RK&K
 P: (919) 978-9560
 8601 Six Forks Road, Forum 1, Suite 700
 Raleigh, North Carolina 27615-3960
 NC License No. F-0112
 Engineers | Construction Managers | Planners | Scientists
 www.rkk.com
 Responsive People | Creative Solutions

8/17/199
 R:\2024\2024\CADD\PSH\EC-R-5709C\R5709C_EC_psh27.dgn
 chofman

PROJECT REFERENCE NO. R-5709C	SHEET NO. EC-28/CONST.28
RW SHEET NO.	
ROADWAY DESIGN ENGINEER	HYDRAULICS ENGINEER



MATCHLINE -L- STA. 635 + 00.00 SEE SHEET 27

MATCHLINE -L- STA. 649 + 00.00 SEE SHEET 29

170 x 60 x 3
4.0 inch Skimmer
with 3.250 inch
Orifice Diameter
52 ft. weir
ID 28.1 (51.1)

170 x 60 x 3
4.0 inch Skimmer
with 3.250 inch
Orifice Diameter
52 ft. weir
ID 28.1 (51.1)

-L-	-L-
PIs Sta 644+94.55	PI Sta 647+11.91
Os = 4' 26' 08.9"	Δ = 10' 07' 58.5" (LT)
Ls = 240.00'	D = 3' 4' 47.4"
LT = 160.05'	L = 274.12'
ST = 80.05'	T = 137.42'
	R = 1,550.00'
	SE = 0.06
	V = 60MPH

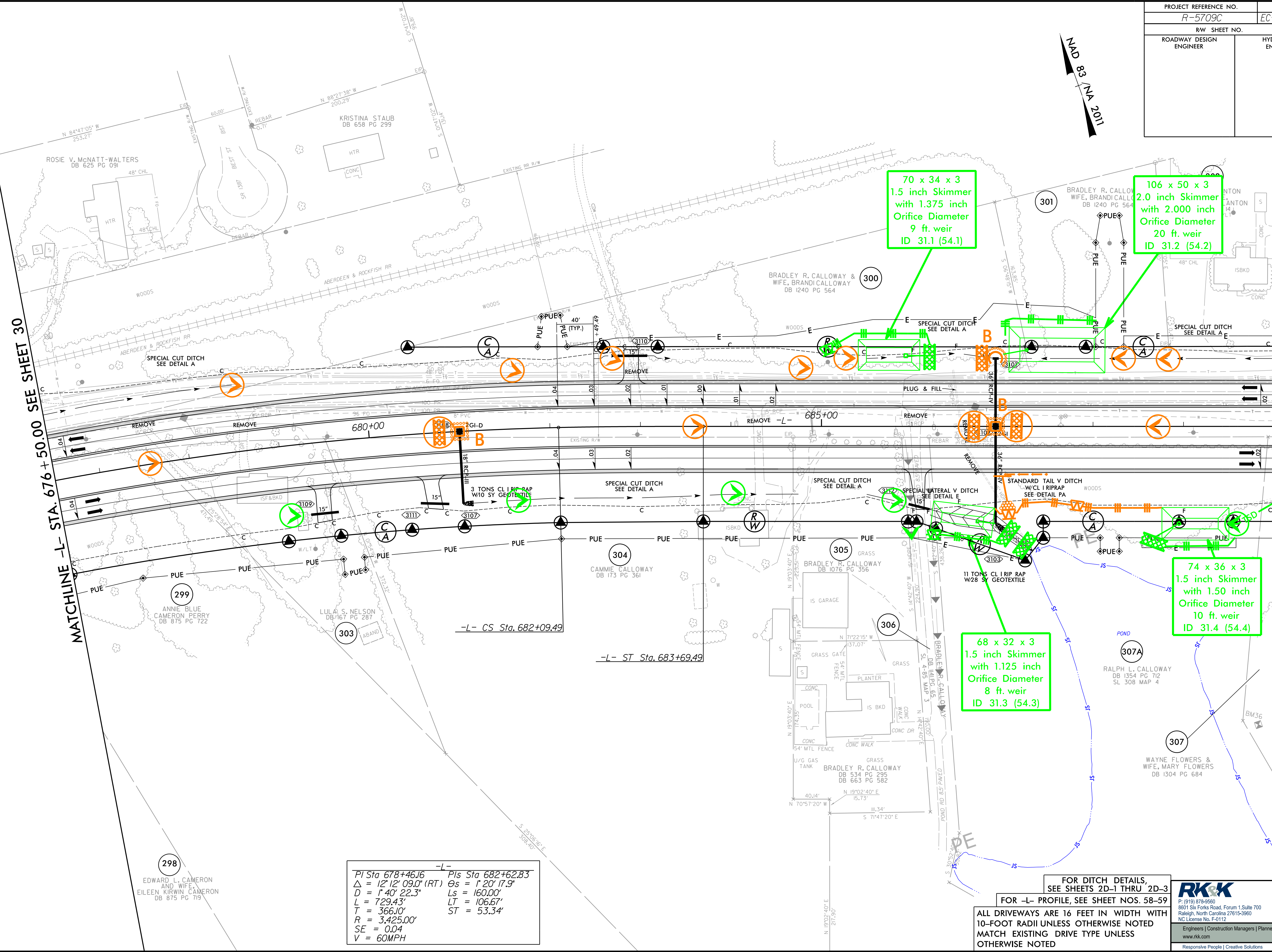
FOR DITCH DETAILS,
SEE SHEETS 2D-1 THRU 2D-3
FOR -L- PROFILE, SEE SHEET NO. 58

ALL DRIVEWAYS ARE 16 FEET IN WIDTH WITH
10-FOOT RADII UNLESS OTHERWISE NOTED
MATCH EXISTING DRIVE TYPE UNLESS
OTHERWISE NOTED

8/17/199
R:\2024\2024\103\CADDD\PSH\EC-R-5709C\R5709C.EC.psh28.dgn
chris

PROJECT REFERENCE NO. R-5709C	SHEET NO. EC-31/CONST. 31
RW SHEET NO.	
ROADWAY DESIGN ENGINEER	HYDRAULICS ENGINEER

NAD 83 / NA 2011



MATCHLINE -L- STA. 676+50.00 SEE SHEET 30

MATCHLINE -L- STA. 690+00.00 SEE SHEET 32

70 x 34 x 3
1.5 inch Skimmer
with 1.375 inch
Orifice Diameter
9 ft. weir
ID 31.1 (54.1)

106 x 50 x 3
2.0 inch Skimmer
with 2.000 inch
Orifice Diameter
20 ft. weir
ID 31.2 (54.2)

74 x 36 x 3
1.5 inch Skimmer
with 1.50 inch
Orifice Diameter
10 ft. weir
ID 31.4 (54.4)

68 x 32 x 3
1.5 inch Skimmer
with 1.125 inch
Orifice Diameter
8 ft. weir
ID 31.3 (54.3)

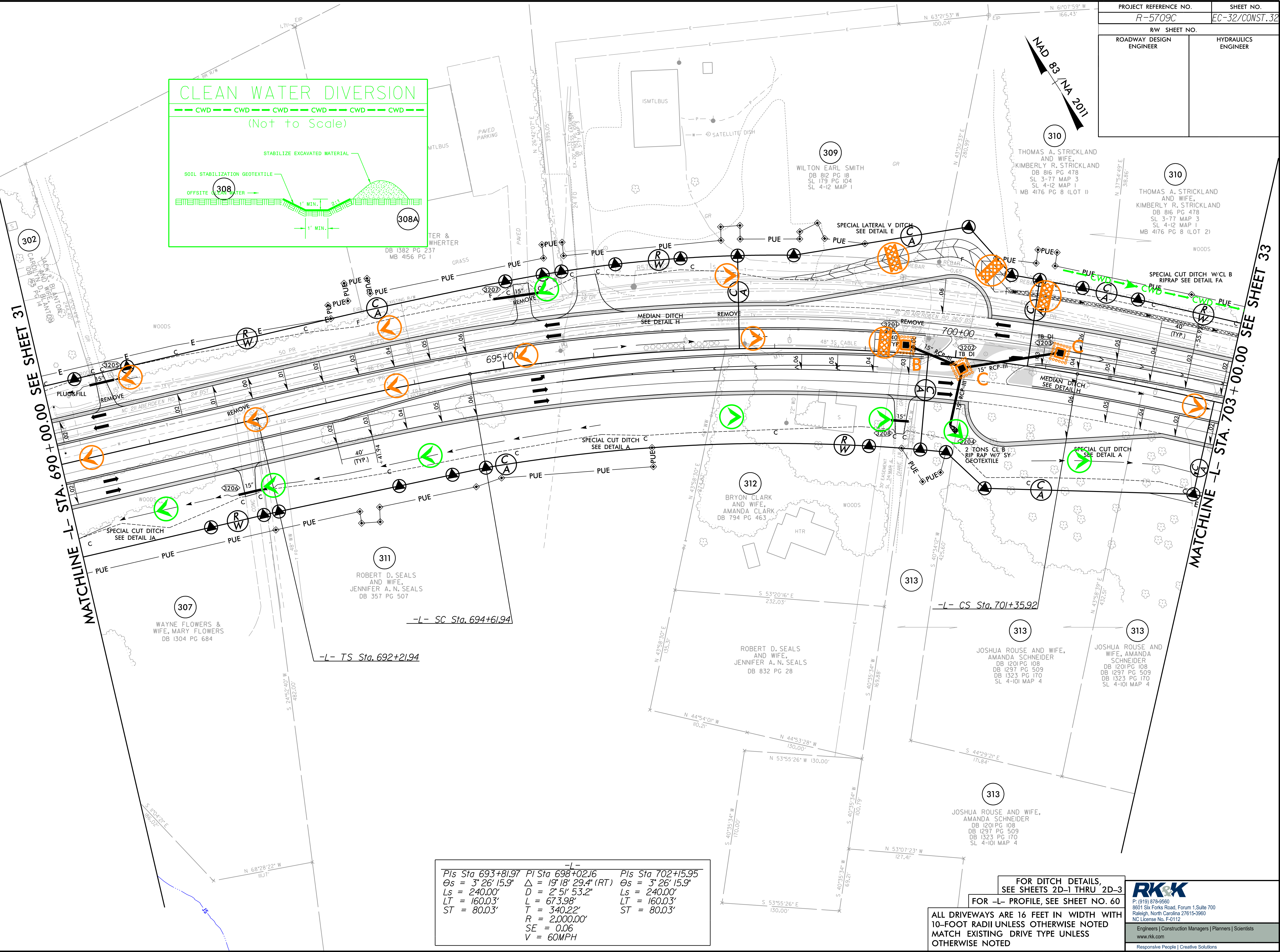
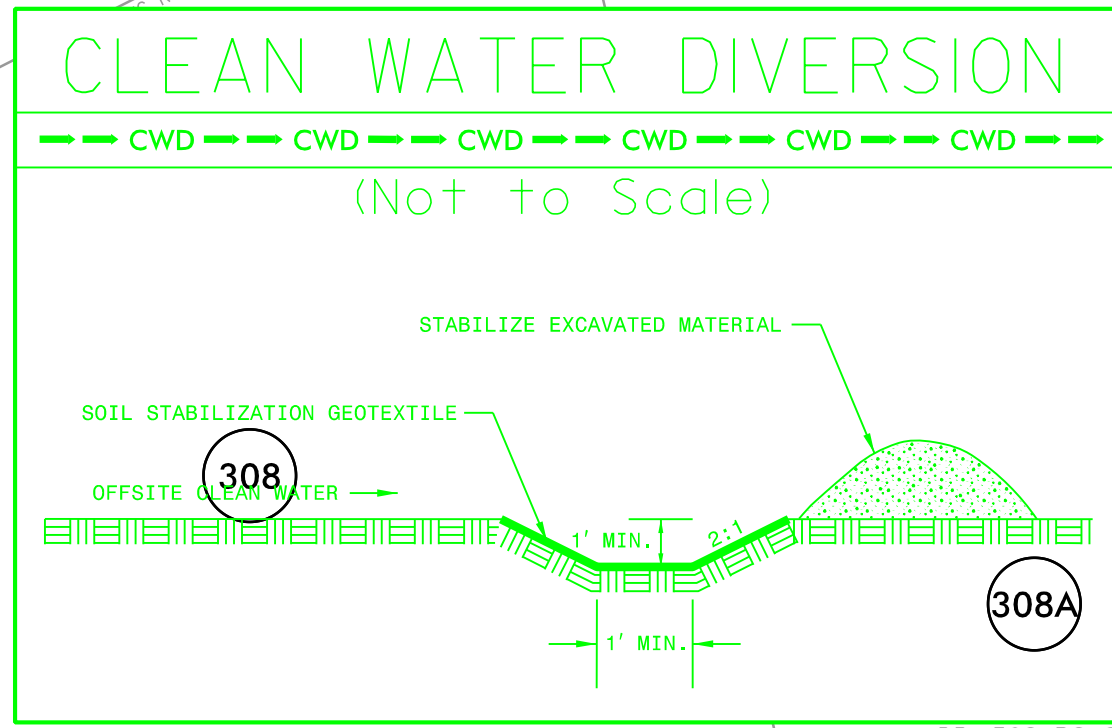
PI Sta 678+46.16	-L-	PIs Sta 682+62.83
$\Delta = 12^{\circ} 12' 09.0''$ (RT)		$\Theta_s = 1^{\circ} 20' 17.9''$
$D = 1^{\circ} 40' 22.3''$		$L_s = 160.00'$
$L = 729.43'$		$LT = 106.67'$
$T = 366.10'$		$ST = 53.34'$
$R = 3,425.00'$		
$SE = 0.04$		
$V = 60MPH$		

FOR DITCH DETAILS,
SEE SHEETS 2D-1 THRU 2D-3
FOR -L- PROFILE, SEE SHEET NOS. 58-59
ALL DRIVEWAYS ARE 16 FEET IN WIDTH WITH
10-FOOT RADII UNLESS OTHERWISE NOTED
MATCH EXISTING DRIVE TYPE UNLESS
OTHERWISE NOTED

RK&K
P: (919) 978-9560
8601 Six Forks Road, Forum 1, Suite 700
Raleigh, North Carolina 27615-3960
NC License No. F-0112
Engineers | Construction Managers | Planners | Scientists
www.rkk.com
Responsive People | Creative Solutions

8/17/199
R:\03\2024\1\cadd\PSH\EC-R-5709C\R5709C_EC_psh31.dgn

PROJECT REFERENCE NO. R-5709C	SHEET NO. EC-32/CONST. 32
RW SHEET NO.	
ROADWAY DESIGN ENGINEER	HYDRAULICS ENGINEER



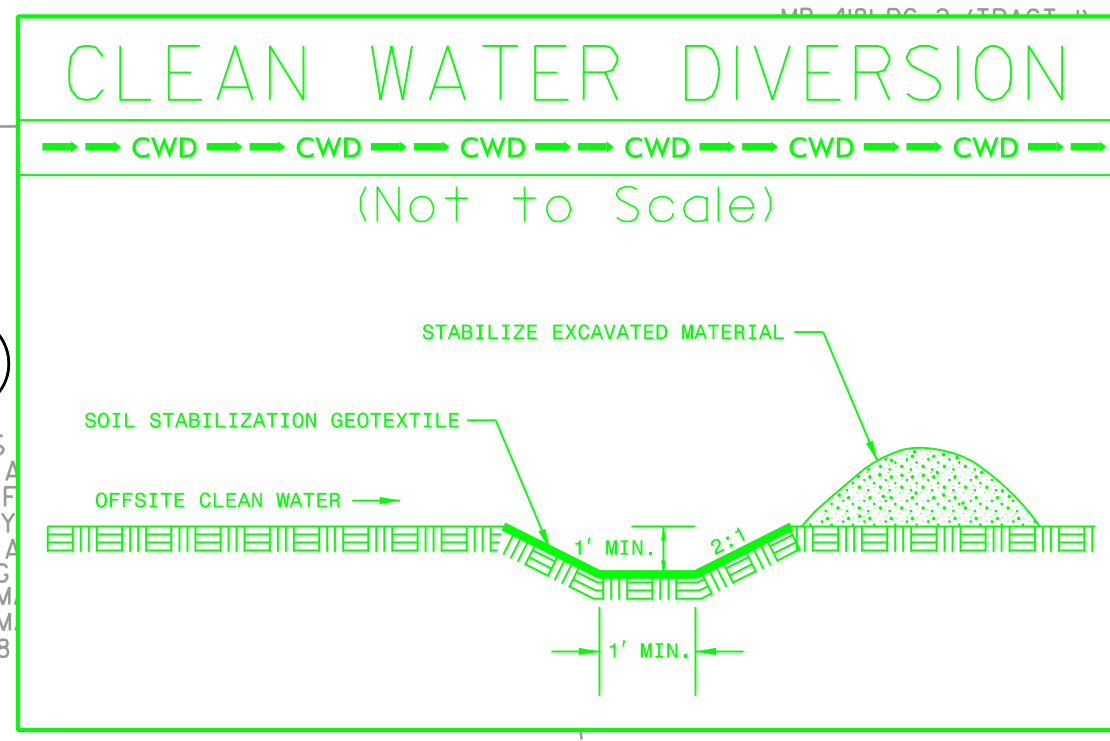
Pls Sta 693+81.97	PI Sta 698+02.16	Pls Sta 702+15.95
Os = 3' 26' 15.9"	Δ = 19' 18' 29.4" (RT)	Os = 3' 26' 15.9"
Ls = 240.00'	D = 2' 51' 53.2"	Ls = 240.00'
LT = 160.03'	L = 67.398'	LT = 160.03'
ST = 80.03'	T = 340.22'	ST = 80.03'
	R = 2,000.00'	
	SE = 0.06	
	V = 60MPH	

FOR DITCH DETAILS,
SEE SHEETS 2D-1 THRU 2D-3
FOR -L- PROFILE, SEE SHEET NO. 80
ALL DRIVEWAYS ARE 16 FEET IN WIDTH WITH
10-FOOT RADII UNLESS OTHERWISE NOTED
MATCH EXISTING DRIVE TYPE UNLESS
OTHERWISE NOTED

RK&K
P: (919) 978-8560
8601 Six Forks Road, Forum 1, Suite 700
Raleigh, North Carolina 27615-3960
NC License No. F-0112
Engineers | Construction Managers | Planners | Scientists
www.rkk.com
Responsive People | Creative Solutions

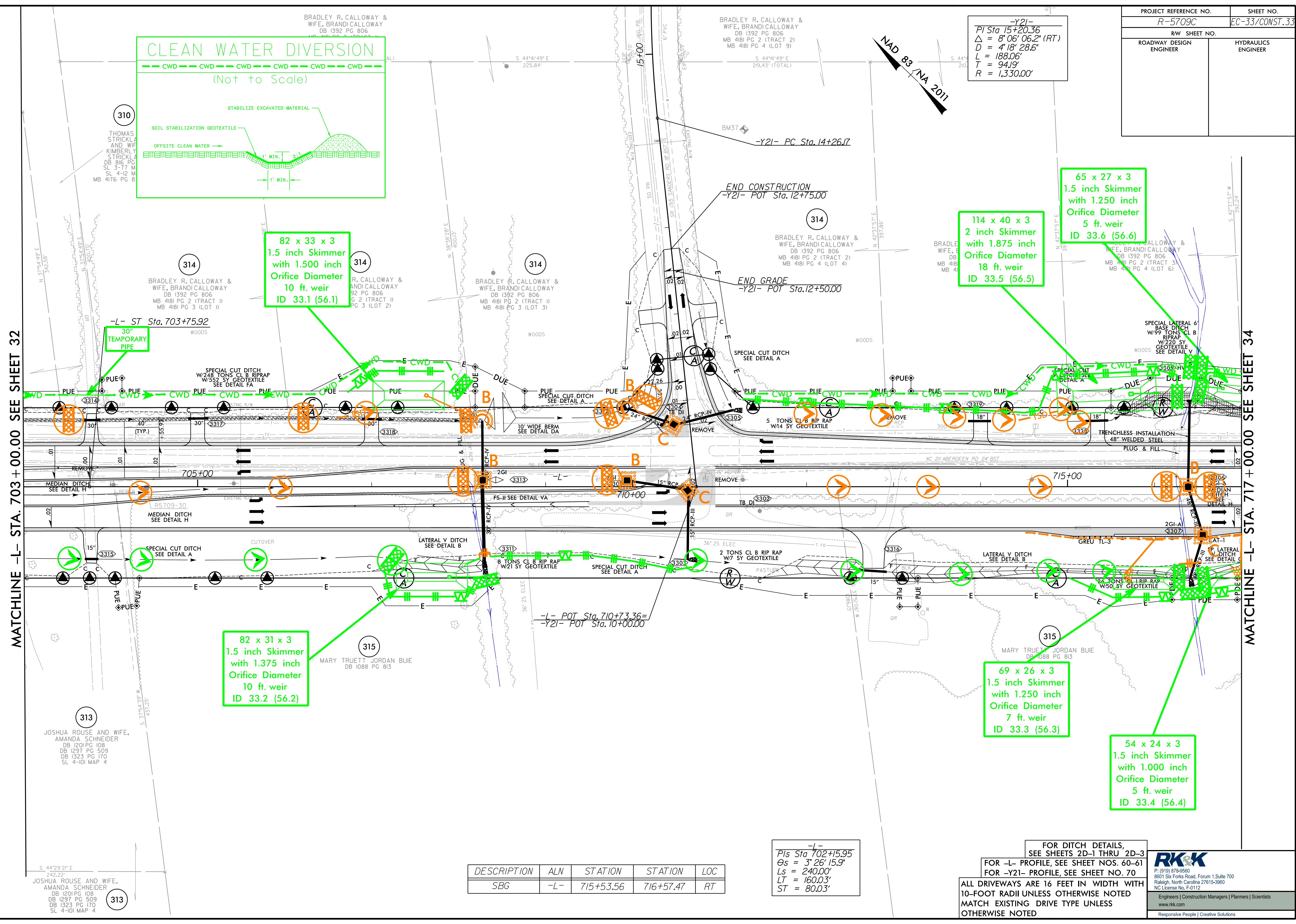
8/17/199
R:\2024\2024\CADD\PSH\EC-NR-5709C\R5709C_EC_psh32.dgn
chh

-Y21-
 PI Sta 15+20.36
 $\Delta = 8' 06' 06.2''$ (RT)
 $D = 4' 18' 28.6''$
 $L = 188.06'$
 $T = 94.19'$
 $R = 1,330.00'$



MATCHLINE -L- STA. 703 + 00.00 SEE SHEET 32

MATCHLINE -L- STA. 717 + 00.00 SEE SHEET 34



82 x 33 x 3
 1.5 inch Skimmer
 with 1.500 inch
 Orifice Diameter
 10 ft. weir
 ID 33.1 (56.1)

114 x 40 x 3
 2 inch Skimmer
 with 1.875 inch
 Orifice Diameter
 18 ft. weir
 ID 33.5 (56.5)

65 x 27 x 3
 1.5 inch Skimmer
 with 1.250 inch
 Orifice Diameter
 5 ft. weir
 ID 33.6 (56.6)

82 x 31 x 3
 1.5 inch Skimmer
 with 1.375 inch
 Orifice Diameter
 10 ft. weir
 ID 33.2 (56.2)

69 x 26 x 3
 1.5 inch Skimmer
 with 1.250 inch
 Orifice Diameter
 7 ft. weir
 ID 33.3 (56.3)

54 x 24 x 3
 1.5 inch Skimmer
 with 1.000 inch
 Orifice Diameter
 5 ft. weir
 ID 33.4 (56.4)

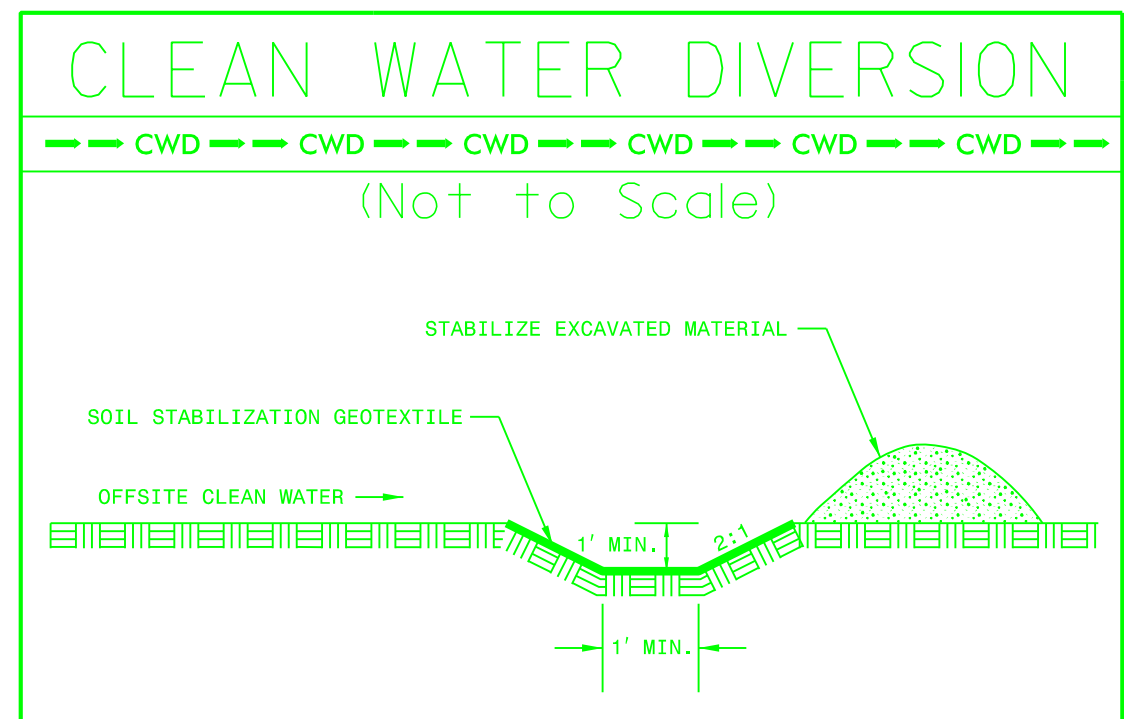
DESCRIPTION	ALN	STATION	STATION	LOC
SBG	-L-	715+53.56	716+57.47	RT

-L-
 PIs Sta 702+15.95
 $\Delta s = 3' 26' 15.9''$
 $Ls = 240.00'$
 $LT = 160.03'$
 $ST = 80.03'$

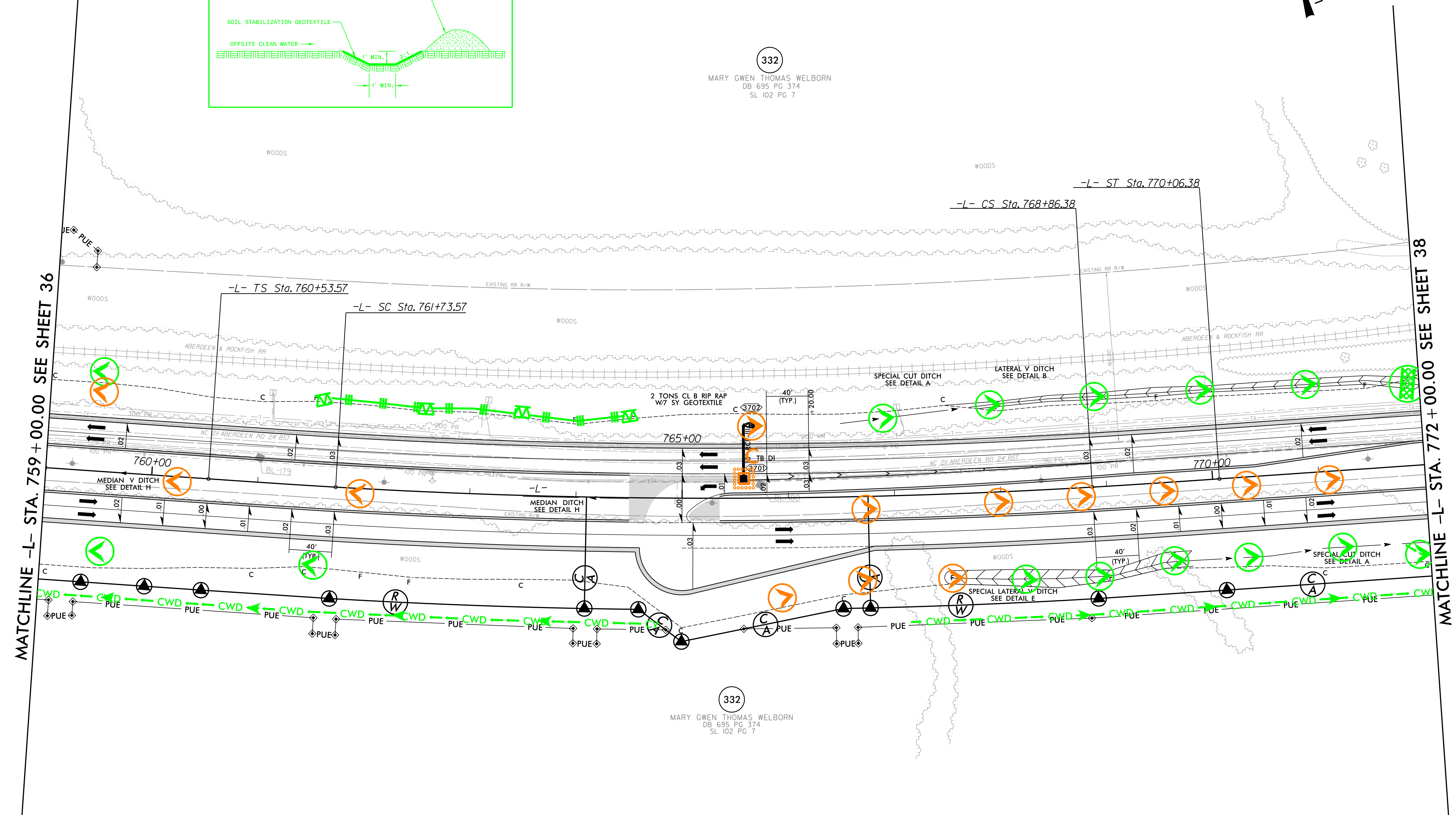
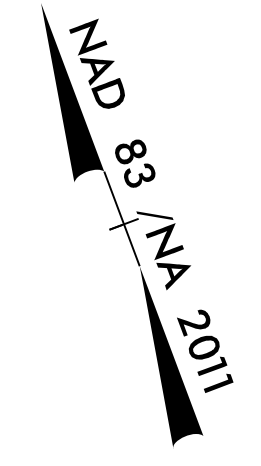
FOR DITCH DETAILS,
 SEE SHEETS 2D-1 THRU 2D-3
 FOR -L- PROFILE, SEE SHEET NOS. 60-61
 FOR -Y21- PROFILE, SEE SHEET NO. 70
 ALL DRIVEWAYS ARE 16 FEET IN WIDTH WITH
 10-FOOT RADII UNLESS OTHERWISE NOTED
 MATCH EXISTING DRIVE TYPE UNLESS
 OTHERWISE NOTED

8/17/199 8/23/2024 \\cs\CADD\PSH\EC-R-5709C\R5709C_EC_psh33.dgn

PROJECT REFERENCE NO. R-5709C	SHEET NO. EC-37/CONST. 37
RW SHEET NO.	
ROADWAY DESIGN ENGINEER	HYDRAULICS ENGINEER



332
MARY GWEN THOMAS WELBORN
DB 695 PG 374
SL 102 PG 7



<i>PIs Sta 761+33.57</i>	<i>PI Sta 765+30.38</i>	<i>PIs Sta 769+26.38</i>
$\theta_s = 0^\circ 33' 57.2''$	$\Delta = 6^\circ 43' 21.9'' (LT)$	$\theta_s = 0^\circ 33' 57.2''$
$L_s = 120.00'$	$D = 0^\circ 56' 35.3''$	$L_s = 120.00'$
$LT = 80.00'$	$L = 712.80'$	$LT = 80.00'$
$ST = 40.00'$	$T = 356.81'$	$ST = 40.00'$
	$R = 6,075.00'$	
	$SE = 0.03$	
	$V = 60MPH$	

FOR DITCH DETAILS, SEE SHEETS 2D-1 THRU 2D-3
FOR -L- PROFILE, SEE SHEET NOS. 62-63

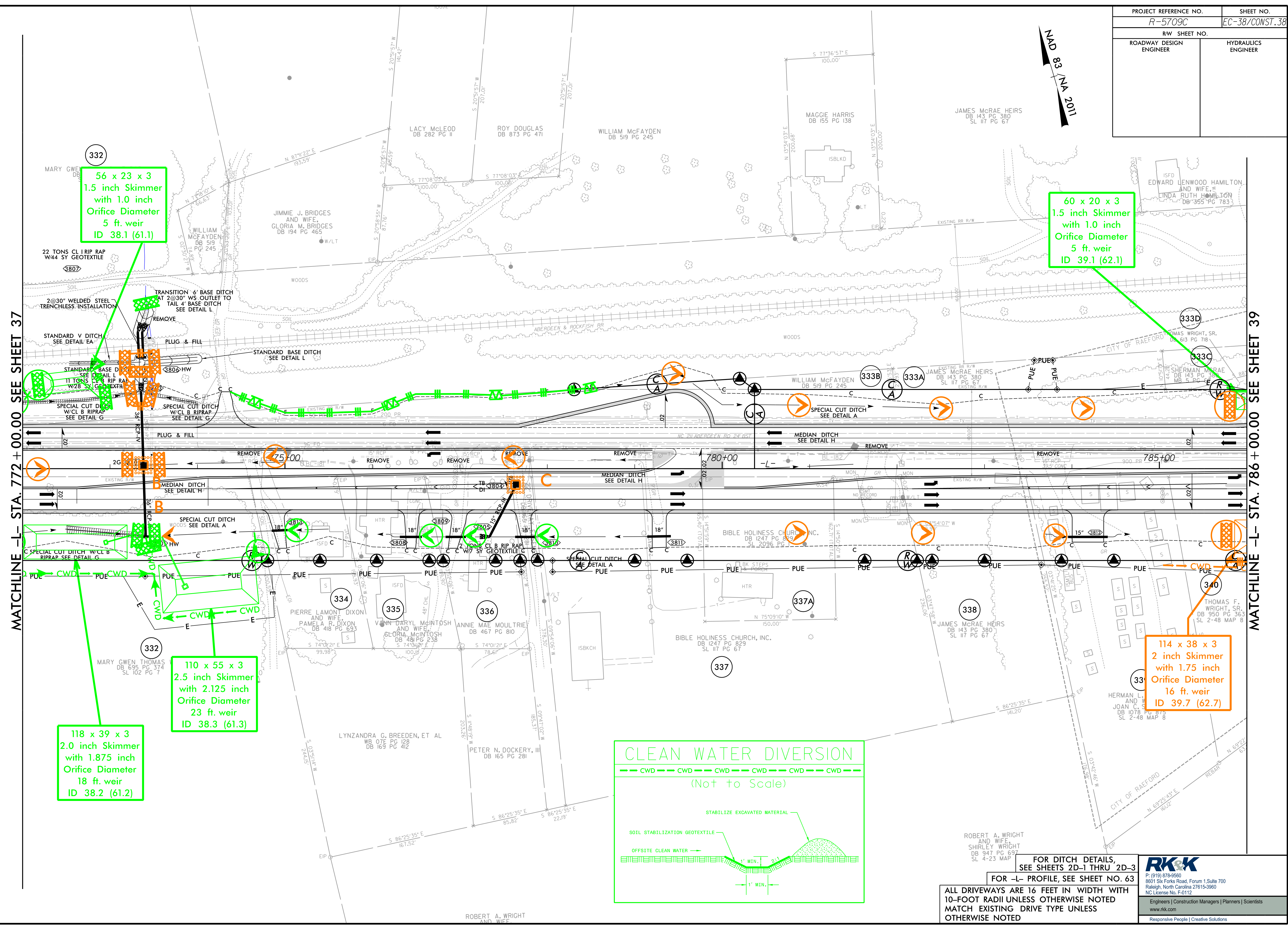
ALL DRIVEWAYS ARE 16 FEET IN WIDTH WITH 10-FOOT RADII UNLESS OTHERWISE NOTED
MATCH EXISTING DRIVE TYPE UNLESS OTHERWISE NOTED

RK&K
P: (919) 978-9560
8601 Six Forks Road, Forum 1, Suite 700
Raleigh, North Carolina 27615-3960
NC License No. F-0112
Engineers | Construction Managers | Planners | Scientists
www.rkk.com
Responsive People | Creative Solutions

8/17/199
R:\2024\2024\pics\CADD\PSH\EC-R-5709C\R5709C_EC_psh37.dgn

PROJECT REFERENCE NO.	SHEET NO.
R-5709C	EC-38/CONST. 38
R/W SHEET NO.	
ROADWAY DESIGN ENGINEER	HYDRAULICS ENGINEER

NAD 83 / NA 2011



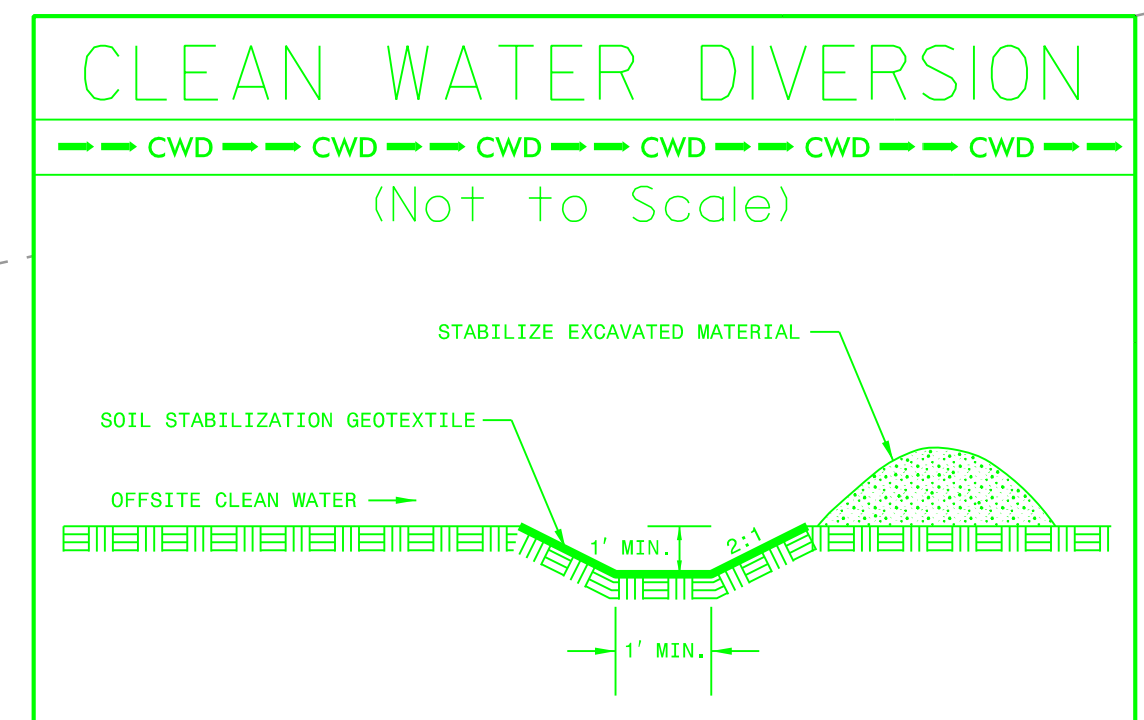
332
56 x 23 x 3
1.5 inch Skimmer
with 1.0 inch
Orifice Diameter
5 ft. weir
ID 38.1 (61.1)

60 x 20 x 3
1.5 inch Skimmer
with 1.0 inch
Orifice Diameter
5 ft. weir
ID 39.1 (62.1)

118 x 39 x 3
2.0 inch Skimmer
with 1.875 inch
Orifice Diameter
18 ft. weir
ID 38.2 (61.2)

110 x 55 x 3
2.5 inch Skimmer
with 2.125 inch
Orifice Diameter
23 ft. weir
ID 38.3 (61.3)

114 x 38 x 3
2 inch Skimmer
with 1.75 inch
Orifice Diameter
16 ft. weir
ID 39.7 (62.7)



MATCHLINE -L- STA. 772 + 00.00 SEE SHEET 37

MATCHLINE -L- STA. 786 + 00.00 SEE SHEET 39

FOR DITCH DETAILS, SEE SHEETS 2D-1 THRU 2D-3
FOR -L- PROFILE, SEE SHEET NO. 63

ALL DRIVEWAYS ARE 16 FEET IN WIDTH WITH 10-FOOT RADII UNLESS OTHERWISE NOTED
MATCH EXISTING DRIVE TYPE UNLESS OTHERWISE NOTED

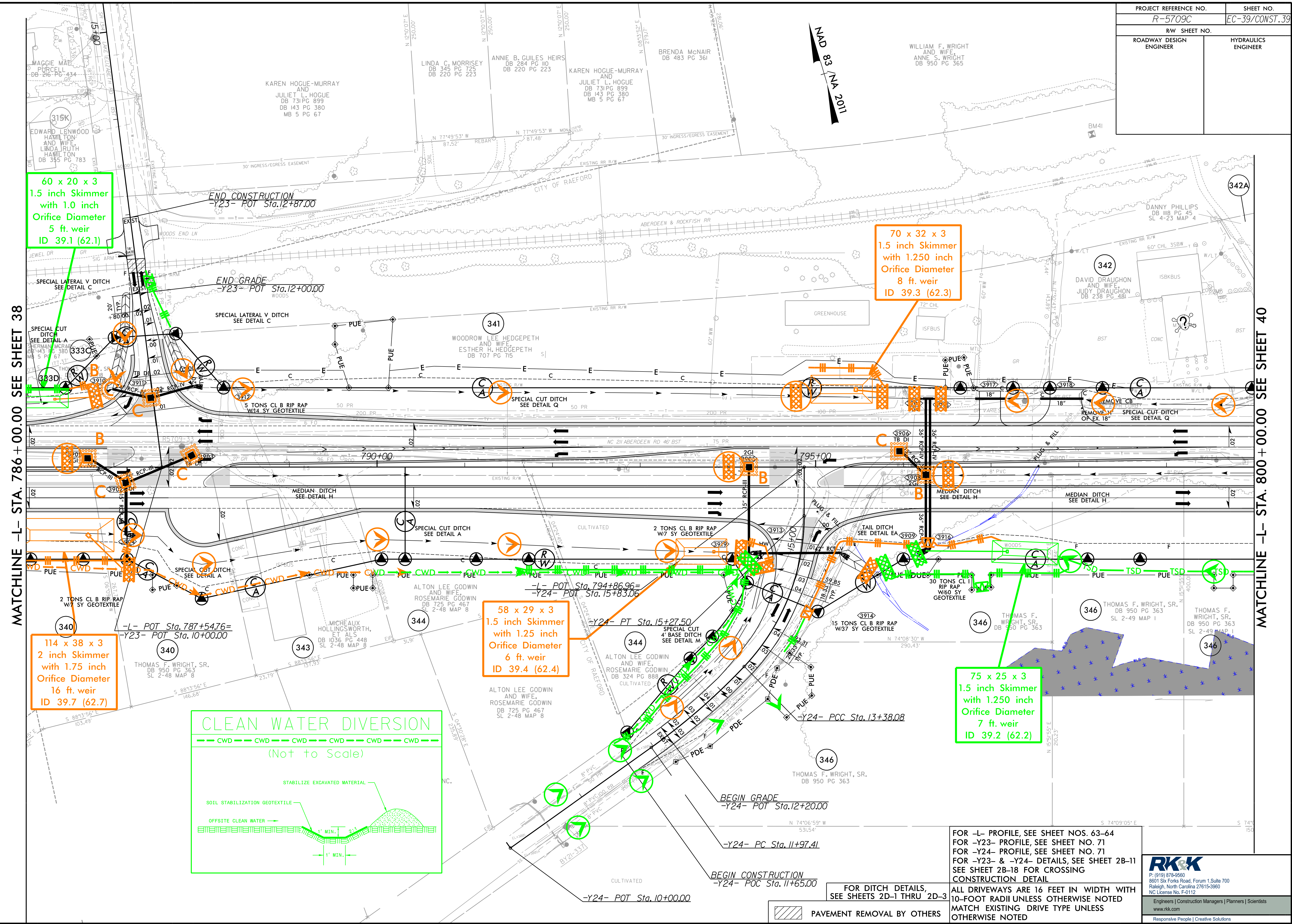
RK&K
P. (919) 978-9560
8601 Six Forks Road, Forum 1, Suite 700
Raleigh, North Carolina 27615-3960
NC License No. F-0112

Engineers | Construction Managers | Planners | Scientists
www.rkk.com
Responsive People | Creative Solutions

8/17/199 R:\2024\2024\CADD\PSH\EC-R-5709C\R5709C_EC_psh38.dgn

PROJECT REFERENCE NO. R-5709C	SHEET NO. EC-39/CONST. 39
RW SHEET NO.	
ROADWAY DESIGN ENGINEER	HYDRAULICS ENGINEER

8/17/199
R:\2024\2024\CADD\PSH\EC-R-5709C\R5709C_EC_psh39.dgn
8/23/2024
chm



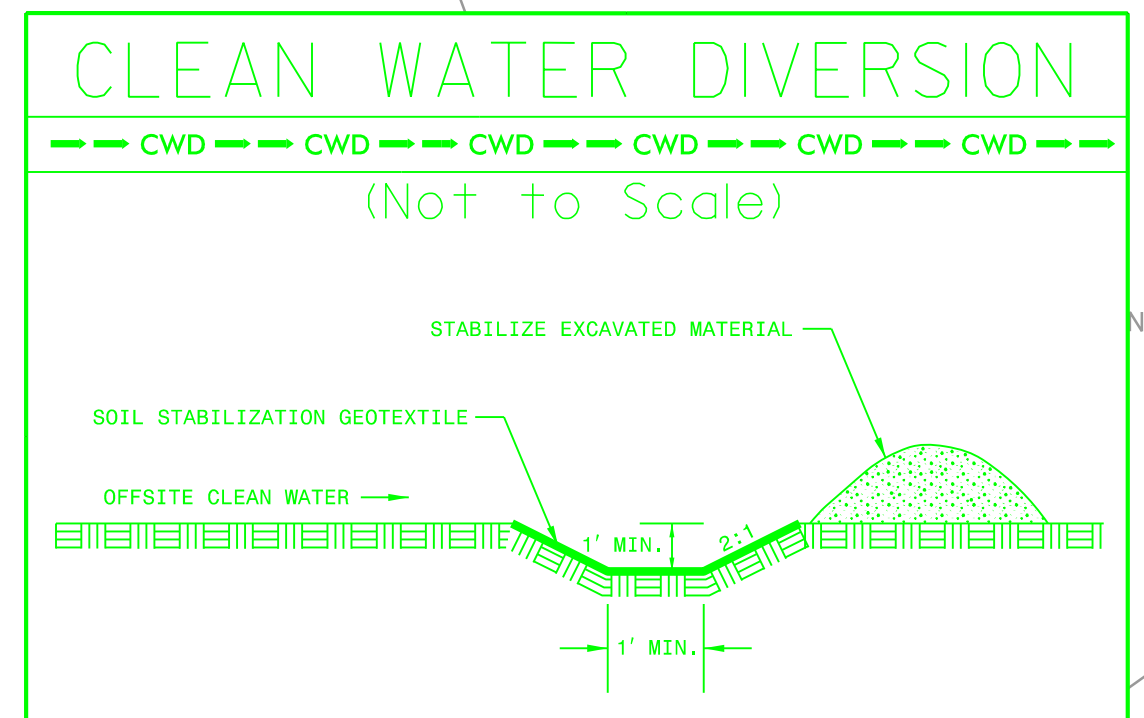
60 x 20 x 3
1.5 inch Skimmer
with 1.0 inch
Orifice Diameter
5 ft. weir
ID 39.1 (62.1)

70 x 32 x 3
1.5 inch Skimmer
with 1.250 inch
Orifice Diameter
8 ft. weir
ID 39.3 (62.3)

114 x 38 x 3
2 inch Skimmer
with 1.75 inch
Orifice Diameter
16 ft. weir
ID 39.7 (62.7)

58 x 29 x 3
1.5 inch Skimmer
with 1.25 inch
Orifice Diameter
6 ft. weir
ID 39.4 (62.4)

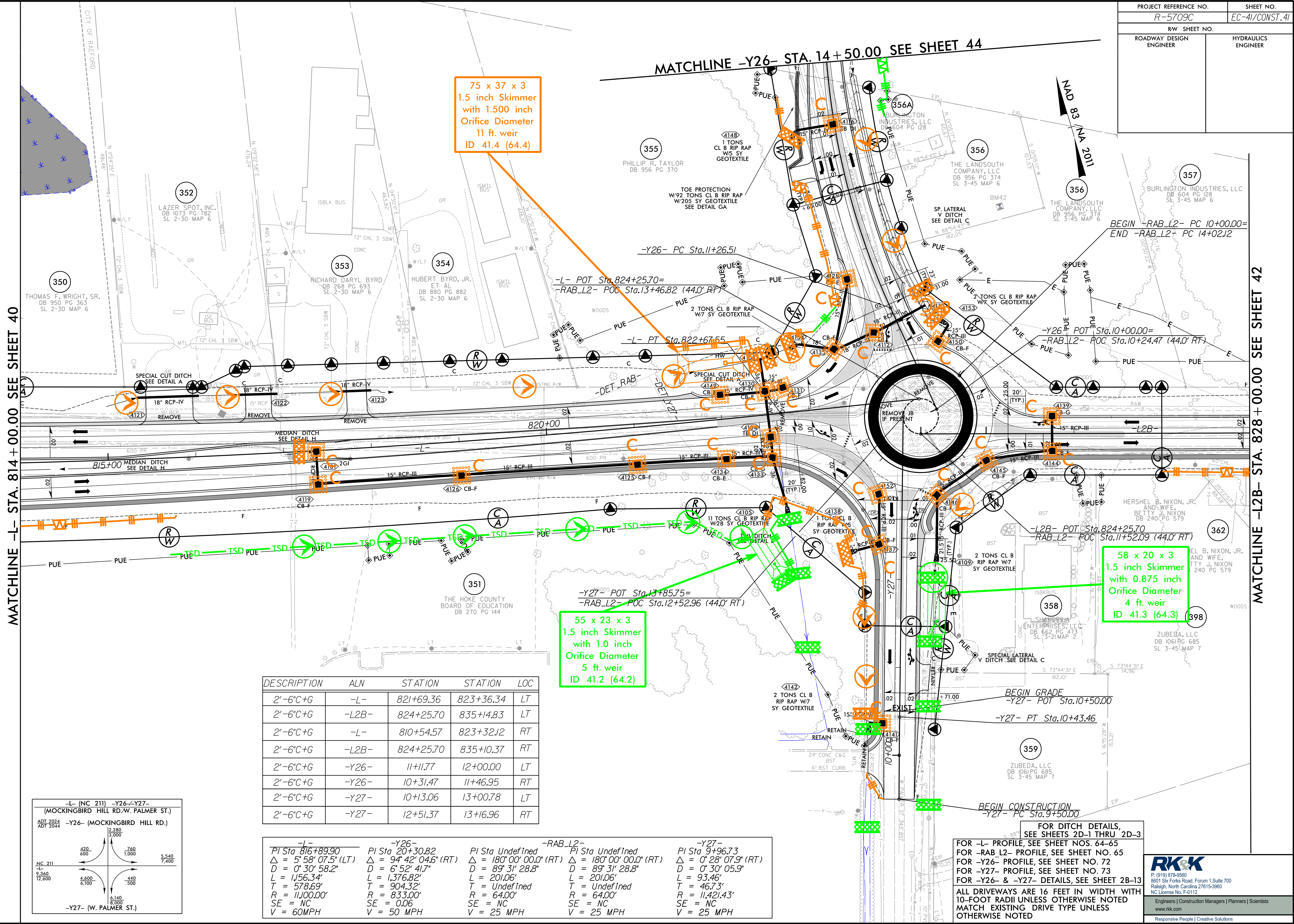
75 x 25 x 3
1.5 inch Skimmer
with 1.250 inch
Orifice Diameter
7 ft. weir
ID 39.2 (62.2)



FOR -L- PROFILE, SEE SHEET NOS. 63-64
FOR -Y23- PROFILE, SEE SHEET NO. 71
FOR -Y24- PROFILE, SEE SHEET NO. 71
FOR -Y23- & -Y24- DETAILS, SEE SHEET 2B-11
SEE SHEET 2B-18 FOR CROSSING
CONSTRUCTION DETAIL
ALL DRIVEWAYS ARE 16 FEET IN WIDTH WITH
10-FOOT RADII UNLESS OTHERWISE NOTED
MATCH EXISTING DRIVE TYPE UNLESS
OTHERWISE NOTED

FOR DITCH DETAILS,
SEE SHEETS 2D-1 THRU 2D-3
PAVEMENT REMOVAL BY OTHERS

RK&K
P: (919) 978-8560
8601 Six Forks Road, Forum 1, Suite 700
Raleigh, North Carolina 27615-3960
NC License No. F-0112
Engineers | Construction Managers | Planners | Scientists
www.rkk.com
Responsive People | Creative Solutions

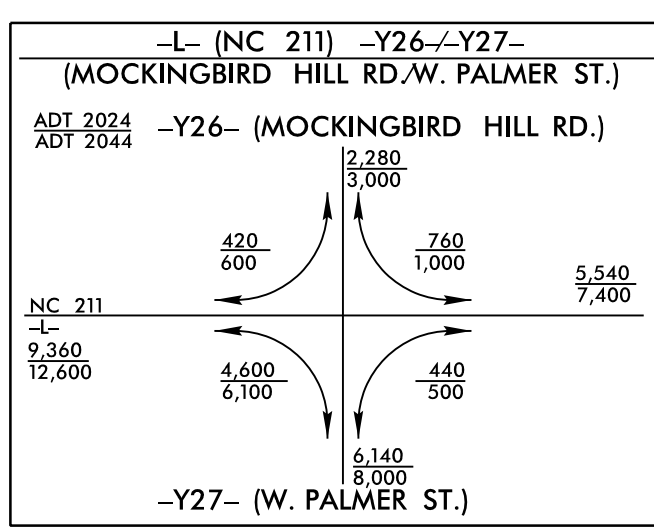


MATCHLINE -L- STA. 814+00.00 SEE SHEET 40

MATCHLINE -L2B- STA. 828+00.00 SEE SHEET 42

DESCRIPTION	ALN	STATION	STATION	LOC
2'-6" C+G	-L-	821+69.36	823+36.34	LT
2'-6" C+G	-L2B-	824+25.70	835+14.83	LT
2'-6" C+G	-L-	810+54.57	823+32.12	RT
2'-6" C+G	-L2B-	824+25.70	835+10.37	RT
2'-6" C+G	-Y26-	11+11.77	12+00.00	LT
2'-6" C+G	-Y26-	10+31.47	11+46.95	RT
2'-6" C+G	-Y27-	10+13.06	13+00.78	LT
2'-6" C+G	-Y27-	12+51.37	13+16.96	RT

-L-		-Y26-		-RAB_L2-		-Y27-	
PI Sta	PI Sta	PI Sta	PI Sta	PI Sta	PI Sta	PI Sta	PI Sta
816+89.90	20+30.82	Undefined	9+96.73	Undefined	9+96.73	Undefined	9+96.73
$\Delta = 5^{\circ} 58' 07.5" (LT)$	$\Delta = 94^{\circ} 42' 04.6" (RT)$	$\Delta = 180^{\circ} 00' 00.0" (RT)$	$\Delta = 0^{\circ} 28' 07.9" (RT)$	$\Delta = 180^{\circ} 00' 00.0" (RT)$	$\Delta = 180^{\circ} 00' 00.0" (RT)$	$\Delta = 180^{\circ} 00' 00.0" (RT)$	$\Delta = 0^{\circ} 28' 07.9" (RT)$
$D = 0^{\circ} 30' 58.2"$	$D = 6^{\circ} 52' 41.7"$	$D = 89^{\circ} 31' 28.8"$	$D = 0^{\circ} 30' 05.9"$	$D = 89^{\circ} 31' 28.8"$	$D = 89^{\circ} 31' 28.8"$	$D = 89^{\circ} 31' 28.8"$	$D = 0^{\circ} 30' 05.9"$
$L = 1,156.34'$	$L = 1,376.82'$	$L = 201.06'$	$L = 93.46'$	$L = 201.06'$	$L = 201.06'$	$L = 201.06'$	$L = 93.46'$
$T = 578.69'$	$T = 904.32'$	$T = Undefined$	$T = 46.73'$	$T = Undefined$	$T = Undefined$	$T = Undefined$	$T = 46.73'$
$R = 11,100.00'$	$R = 833.00'$	$R = 64.00'$	$R = 11,421.43'$	$R = 64.00'$	$R = 64.00'$	$R = 64.00'$	$R = 11,421.43'$
$SE = NC$	$SE = 0.06$	$SE = NC$	$SE = NC$	$SE = NC$	$SE = NC$	$SE = NC$	$SE = NC$
$V = 60MPH$	$V = 50 MPH$	$V = 25 MPH$	$V = 25 MPH$	$V = 25 MPH$	$V = 25 MPH$	$V = 25 MPH$	$V = 25 MPH$



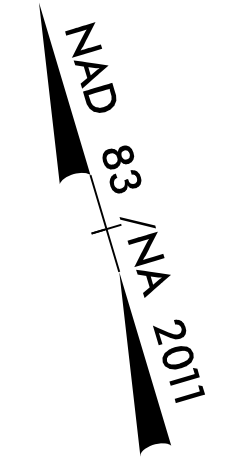
FOR DITCH DETAILS,
SEE SHEETS 2D-1 THRU 2D-3

FOR -L- PROFILE, SEE SHEET NOS. 64-65
FOR -RAB_L2- PROFILE, SEE SHEET NO. 65
FOR -Y26- PROFILE, SEE SHEET NO. 72
FOR -Y27- PROFILE, SEE SHEET NO. 73
FOR -Y26- & -Y27- DETAILS, SEE SHEET 2B-13

ALL DRIVEWAYS ARE 16 FEET IN WIDTH WITH
10-FOOT RADII UNLESS OTHERWISE NOTED
MATCH EXISTING DRIVE TYPE UNLESS
OTHERWISE NOTED

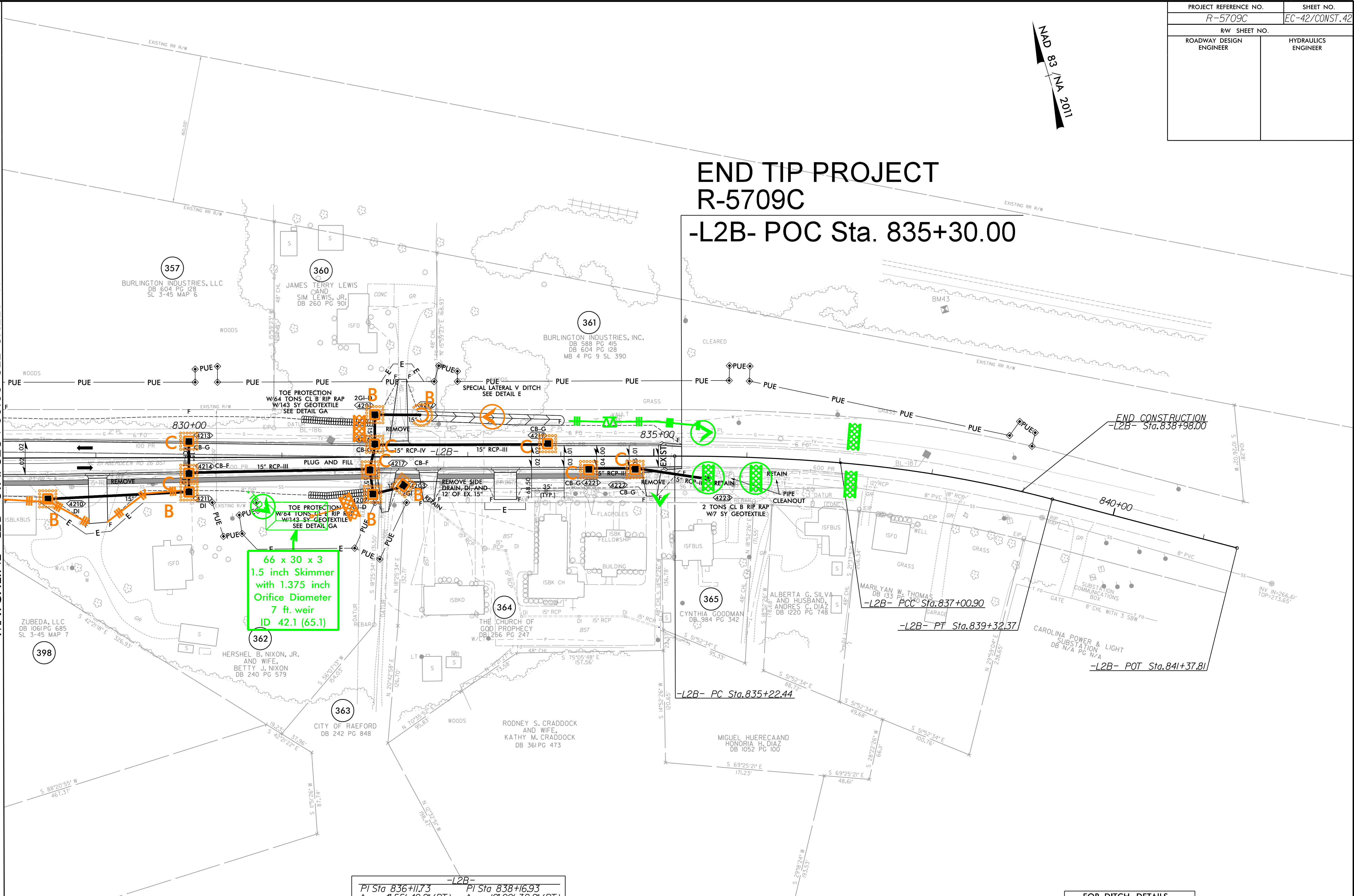
8/17/199
8/23/2024
C:\CADD\PSH\EC-R-5709C\R5709C_EC_psh41.dgn

PROJECT REFERENCE NO. R-5709C	SHEET NO. EC-42/CONST.42
R/W SHEET NO.	HYDRAULICS ENGINEER
ROADWAY DESIGN ENGINEER	



END TIP PROJECT R-5709C -L2B- POC Sta. 835+30.00

MATCHLINE -L2B- STA. 828+00.00 SEE SHEET 41



66 x 30 x 3
1.5 inch Skimmer
with 1.375 inch
Orifice Diameter
7 ft. weir
ID 42.1 (65.1)

-L2B-	
PI Sta 836+11.73	PI Sta 838+16.93
$\Delta = 4^{\circ} 55' 40.2''$ (RT)	$\Delta = 10^{\circ} 00' 32.2''$ (RT)
$D = 2^{\circ} 45' 40.5''$	$D = 4^{\circ} 19' 27.2''$
$L = 178.46'$	$L = 231.46'$
$T = 89.29'$	$T = 116.03'$
$R = 2,075.00'$	$R = 1,325.00'$
SE = Exist.	SE = Exist.

DESCRIPTION	ALN	STATION	STATION	LOC
2'-6\"/>				

FOR DITCH DETAILS,
SEE SHEETS 2D-1 THRU 2D-3

FOR -L2B- PROFILE, SEE SHEET NO. 65

ALL DRIVEWAYS ARE 16 FEET IN WIDTH WITH 10-FOOT RADII UNLESS OTHERWISE NOTED MATCH EXISTING DRIVE TYPE UNLESS OTHERWISE NOTED

P: (919) 878-8560
 8601 Six Forks Road, Forum 1, Suite 700
 Raleigh, North Carolina 27615-3960
 NC License No. F-0112
 Engineers | Construction Managers | Planners | Scientists
 www.rkk.com
 Responsive People | Creative Solutions

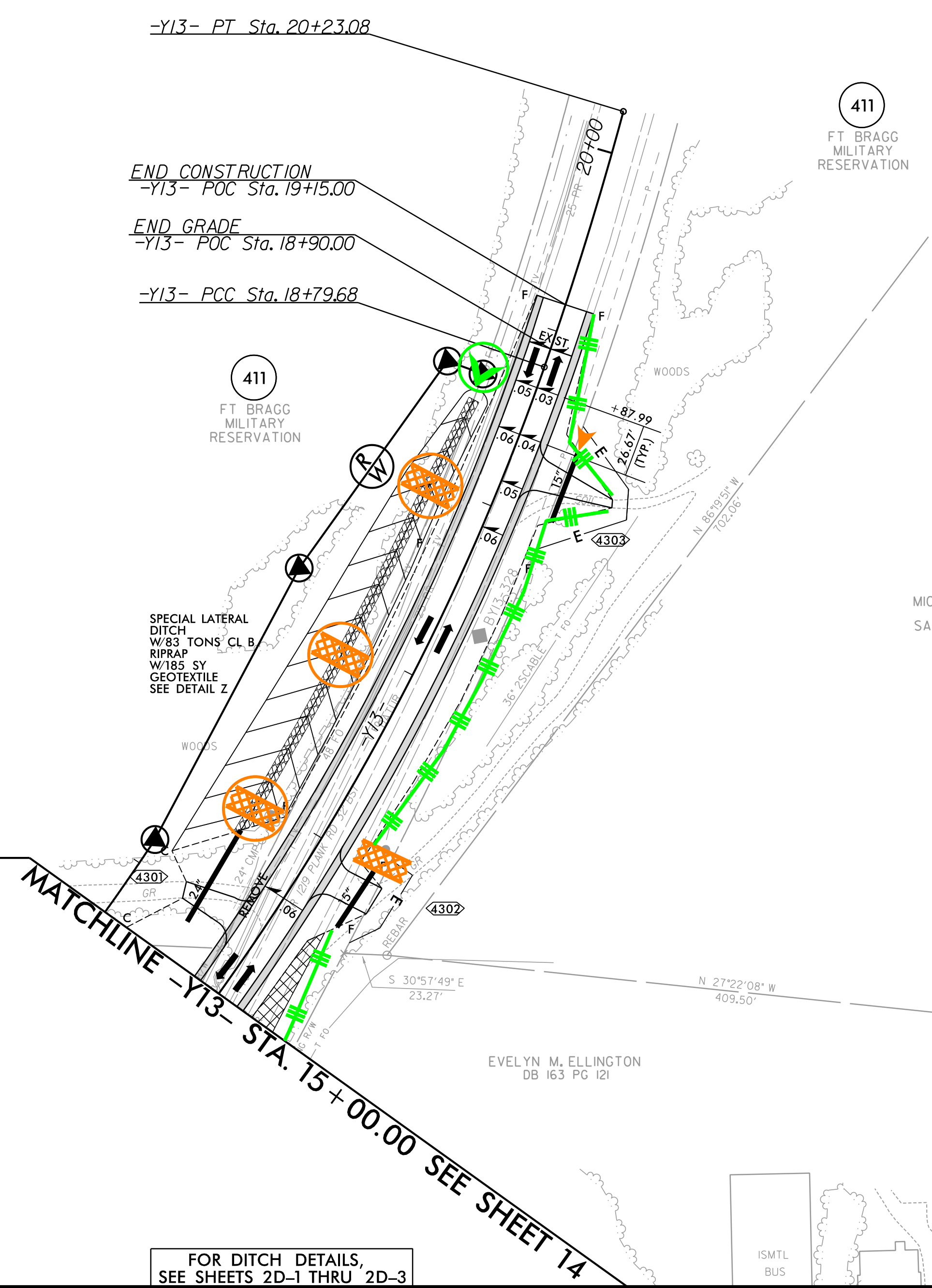
8/17/09
8/28/2024
R:\Highways\Projects\5709\EC-42\CONST.42.dgn
chaffman

PROJECT REFERENCE NO.	SHEET NO.
R-5709C	EC-43/CONST.43
RW SHEET NO.	
ROADWAY DESIGN ENGINEER	HYDRAULICS ENGINEER

NAD 83 / NA 2011

-L2- (NC 211)	-Y13- (PLANK RD/ARMY RD.)
ADT 2024 ADT 2044	4,400 5,000
2,660 3,200	360 300
NC 211 -L2- 13,560 17,700	11,320 14,800
180 300	240 300
	1,660 1,900
	-Y13- (PLANK RD/ARMY RD.)

-Y13-	
PI Sta 15+98.84	PI Sta 19+51.41
$\Delta = 24^{\circ} 34' 53.4"$ (LT)	$\Delta = 4^{\circ} 12' 48.2"$ (LT)
D = 4' 18" 28.6"	D = 2' 56" 17.7"
L = 570.61'	L = 143.40'
T = 289.76'	T = 71.73'
R = 1,330.00'	R = 1,950.00'
SE = 0.06	
V = 60 MPH	



FOR DITCH DETAILS, SEE SHEETS 2D-1 THRU 2D-3

FOR -Y13- PROFILE, SEE SHEET NO. 68
 ALL DRIVEWAYS ARE 16 FEET IN WIDTH WITH 10-FOOT RADII UNLESS OTHERWISE NOTED
 MATCH EXISTING DRIVE TYPE UNLESS OTHERWISE NOTED

RK&K
 P: (919) 978-9560
 8601 Six Forks Road, Forum 1, Suite 700
 Raleigh, North Carolina 27615-3960
 NC License No. F-0112
 Engineers | Construction Managers | Planners | Scientists
 www.rkk.com
 Responsive People | Creative Solutions

8/17/09
 R:\30\2024\103\CADD\PSH\EC-43\5709C\185709C_EC.psh43.dgn
 chofman

MATCHLINE B SEE INSET A THIS SHEET

Milepost 15.83
Turnpike Road

NAD 83 / NA 2011

NAD 83 / NA 2011

PROJECT REFERENCE NO. R-5709C	SHEET NO. EC-45/CONST.45
R/W SHEET NO.	
ROADWAY DESIGN ENGINEER	HYDRAULICS ENGINEER

MATCHLINE A SEE SHEET 40

GRADE TO DRAIN

MATCHLINE B THIS SHEET

INSET A

-SRI- POT Sta.10+00.00

BEGIN OVERLAY
-SRI- POC Sta.10+75.00

333
WILLIAM F. WRIGHT
AND WIFE,
ANNE S. WRIGHT
DB 950 PG 365

-SRI- PC Sta.14+93.78

PHILLIP R. TAYLOR
DB 956 PG 370
412C

END OVERLAY
BEGIN GRADE
-SRI- POC Sta.15+00.00

412A
NORTH RAEFORD
FIRE DEPARTMENT, INC.
DB 143 PG 218
MB 3 SL 390
WOODS

RALPH D. CURRIE
AND WIFE,
BETTY H. CURRIE
MB 3 SL 390
DB 143 PG 218


FRANKLIN HINSON
DB 96E PG 28
DB 99 PG 581
MB 3 SL 390

-SRI- PT Sta.15+06.29

Milepost 15.91

MATCHLINE -SRI- STA. 16 + 50.00 SEE SHEET 44

PI Sta 15+00.04
 $\Delta = 1' 01" 28.7" (RT)$
 $D = 8' 11" 06.4"$
 $L = 12.52'$
 $T = 6.26'$
 $R = 700.00'$
 $SE = 0.03$
 $V = 30 MPH$

 PAVEMENT REMOVAL BY OTHERS

SEE SHEET 2B-14
FOR CLOSURE DETAIL

FOR DITCH DETAILS,
SEE SHEETS 2D-1 THRU 2D-6

FOR -SRI- PROFILE, SEE SHEET NO. 73

RK&K
 P: (919) 978-8560
 8601 Six Forks Road, Forum 1, Suite 700
 Raleigh, North Carolina 27615-3960
 NC License No. F-0112

Engineers | Construction Managers | Planners | Scientists
 www.rkk.com
 Responsive People | Creative Solutions

8/17/199
R:\2024\2024\1\cadd\PSH\EC-IR-5709C\15709C.R5709C.EC-ps44B.dgn
chris