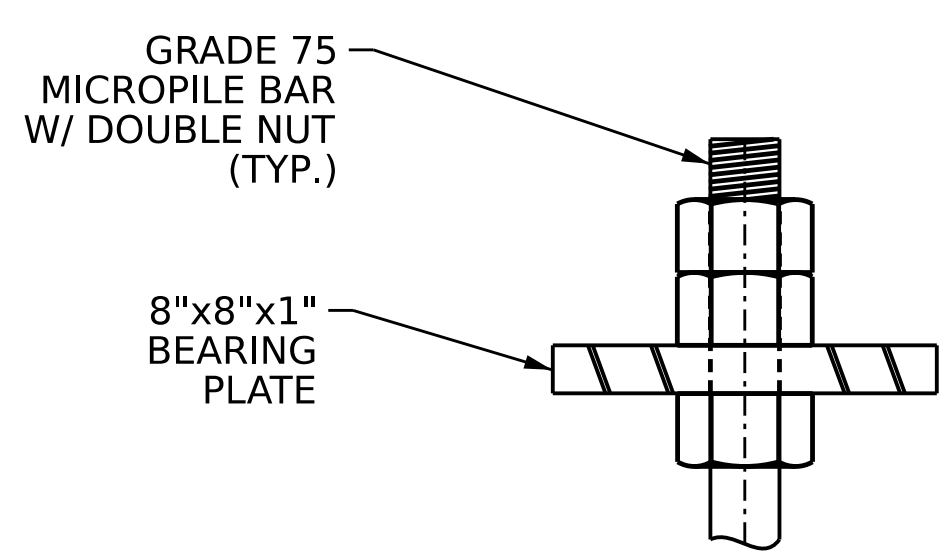
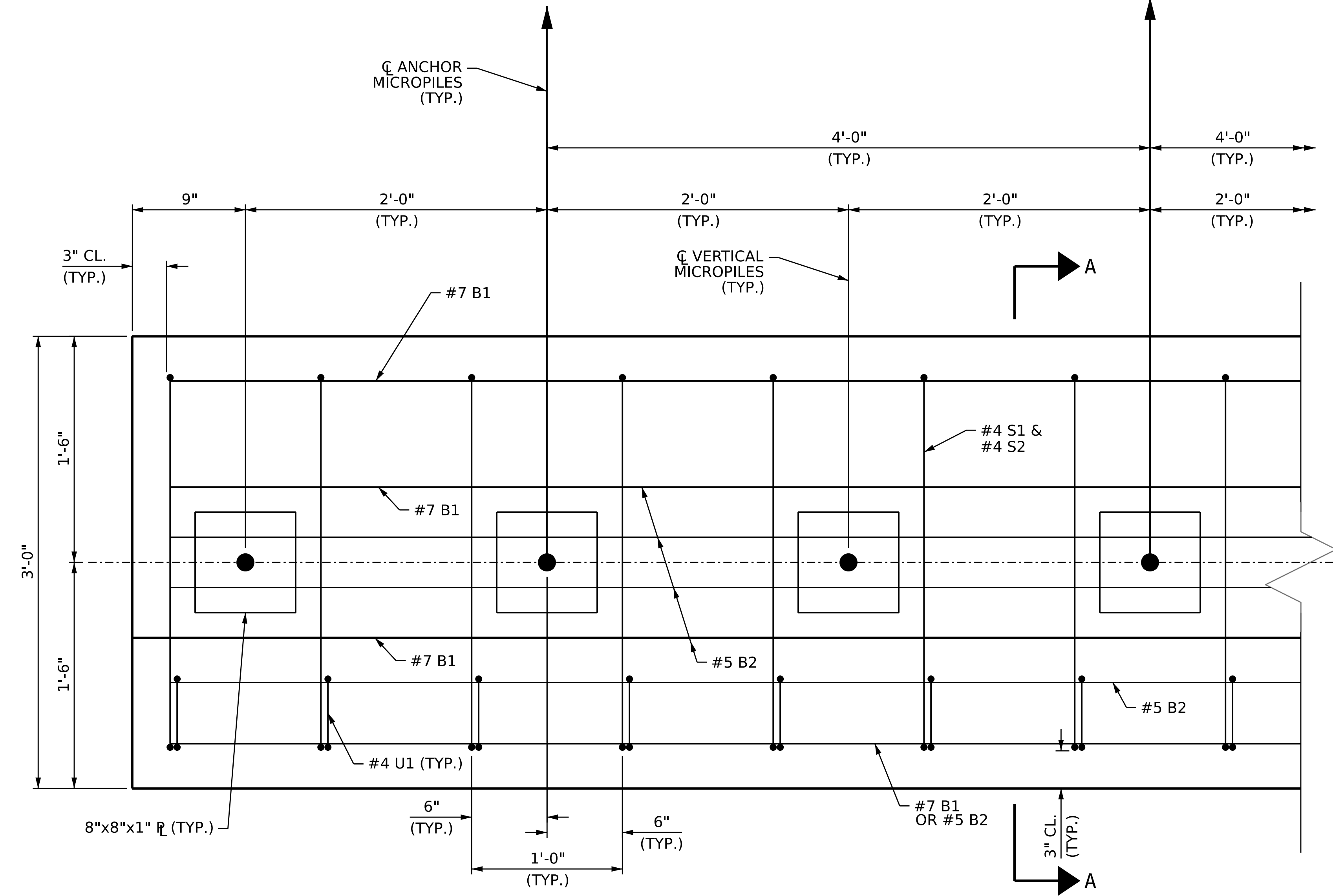


SECTION A-A



MICROPILE DETAIL



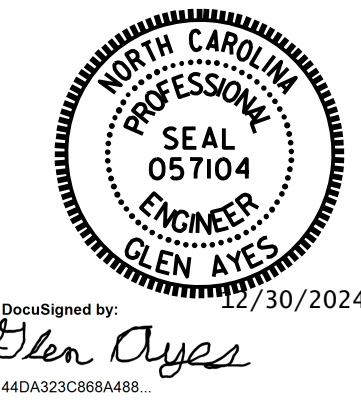
PLAN

BAR TYPES			
ALL BAR DIMENSIONS ARE OUT TO OUT			
BILL OF MATERIAL			
BAR	SIZE	TYPE	LENGTH
B1	#7	STR.	-
B2	#5	STR.	-
B3	#4	STR.	2'-6"
-	-	-	-
S1	#4	1	6'-5"
S2	#4	2	3'-5"
-	-	-	-
U1	#4	3	5'-6"
REINFORCING STEEL =		45 LBS./LIN.FT.	
CLASS A CONCRETE =		0.3 CU.YD./LIN.FT.	

NOTES

- DESIGN ASSUMPTIONS:
- ANCHOR/VERTICAL MICROPILE LOAD OF 55 KIPS.
 - VERTICAL LOAD OF 4.6 KIPS/SQFT.
 - LATERAL LOAD OF 4.9 KIPS/SQFT.
- INVERT ALTERNATE STIRRUPS AS SHOWN.
- STIRRUPS MAY BE SHIFTED SLIGHTLY AS NECESSARY TO CLEAR MICROPILES.
- FOR OTHER DESIGN DATA AND GENERAL NOTES, SEE MCP DETAILS.
- BEARING PLATES SHALL BE GRADE 50 STEEL.

CONTRACT NO.: c205017



STATE OF NORTH CAROLINA
DEPARTMENT OF TRANSPORTATION
RALEIGH

SLOPE STABILIZATION
2'-0" X 3'-0"
GRADE BEAM

DRAWN BY : NAP DATE : 11/24
CHECKED BY : G. AYES DATE : 11/24
DESIGN ENGINEER OF RECORD : G. AYES DATE : 11/24

REVISIONS						SHEET NO.
NO.	BY:	DATE:	NO.	BY:	DATE:	26-11
1			3			TOTAL SHEETS
2			4			

DOCUMENT NOT CONSIDERED FINAL UNLESS ALL SIGNATURES COMPLETED