

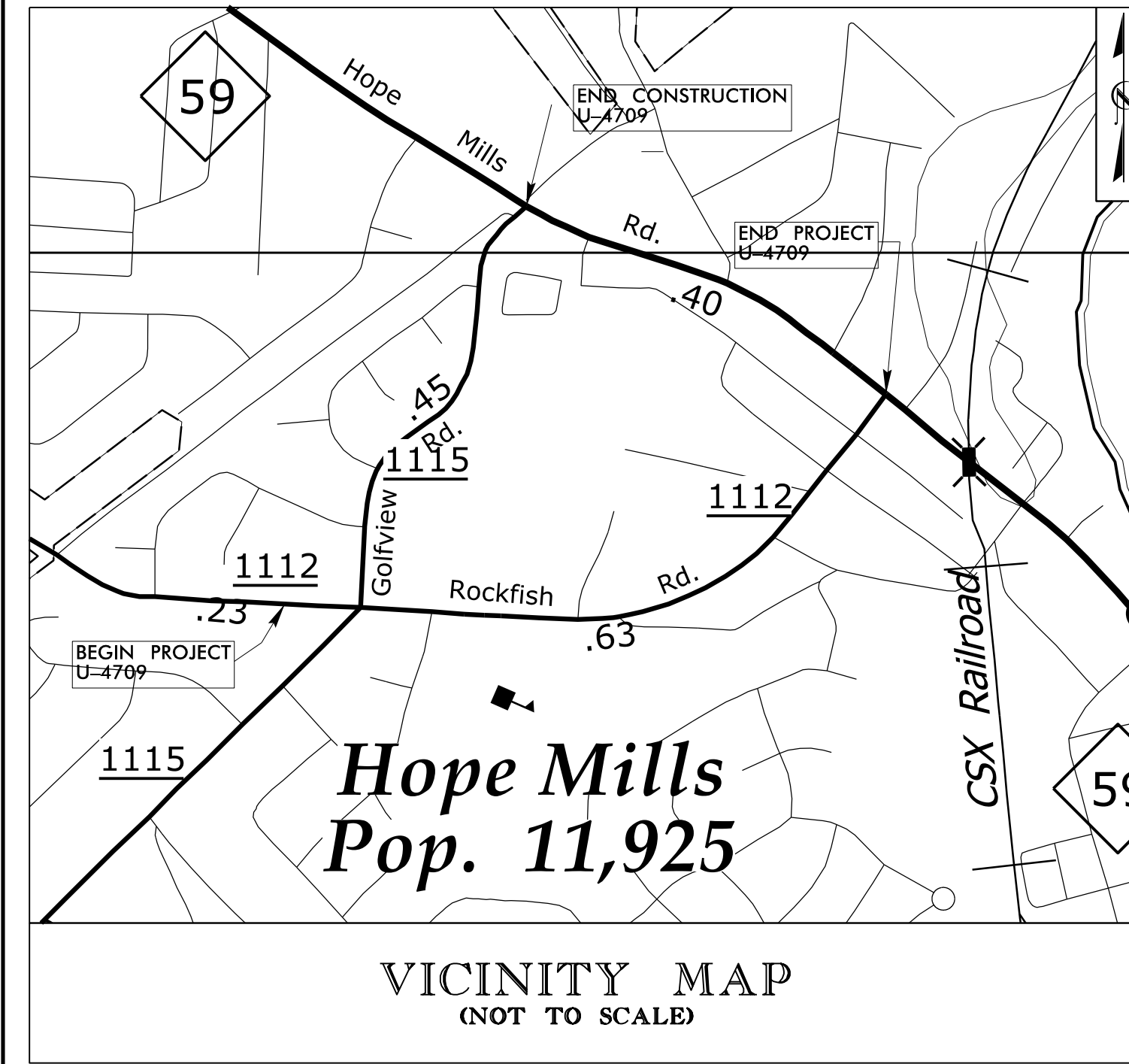
09.08/99

TIP PROJECT: U-4709

STATE OF NORTH CAROLINA
DIVISION OF HIGHWAYS

T.I.P. NO.	SHEET NO.
U-4709	UO-1

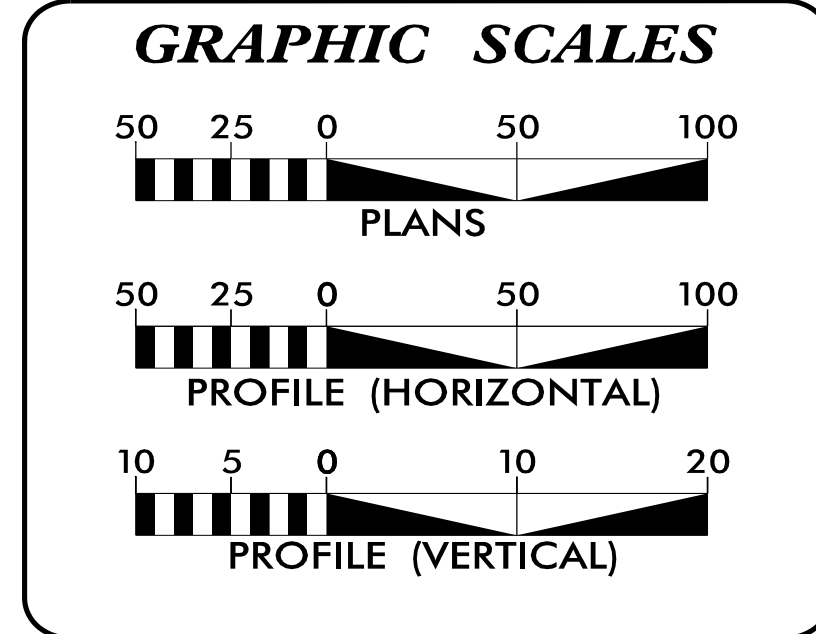
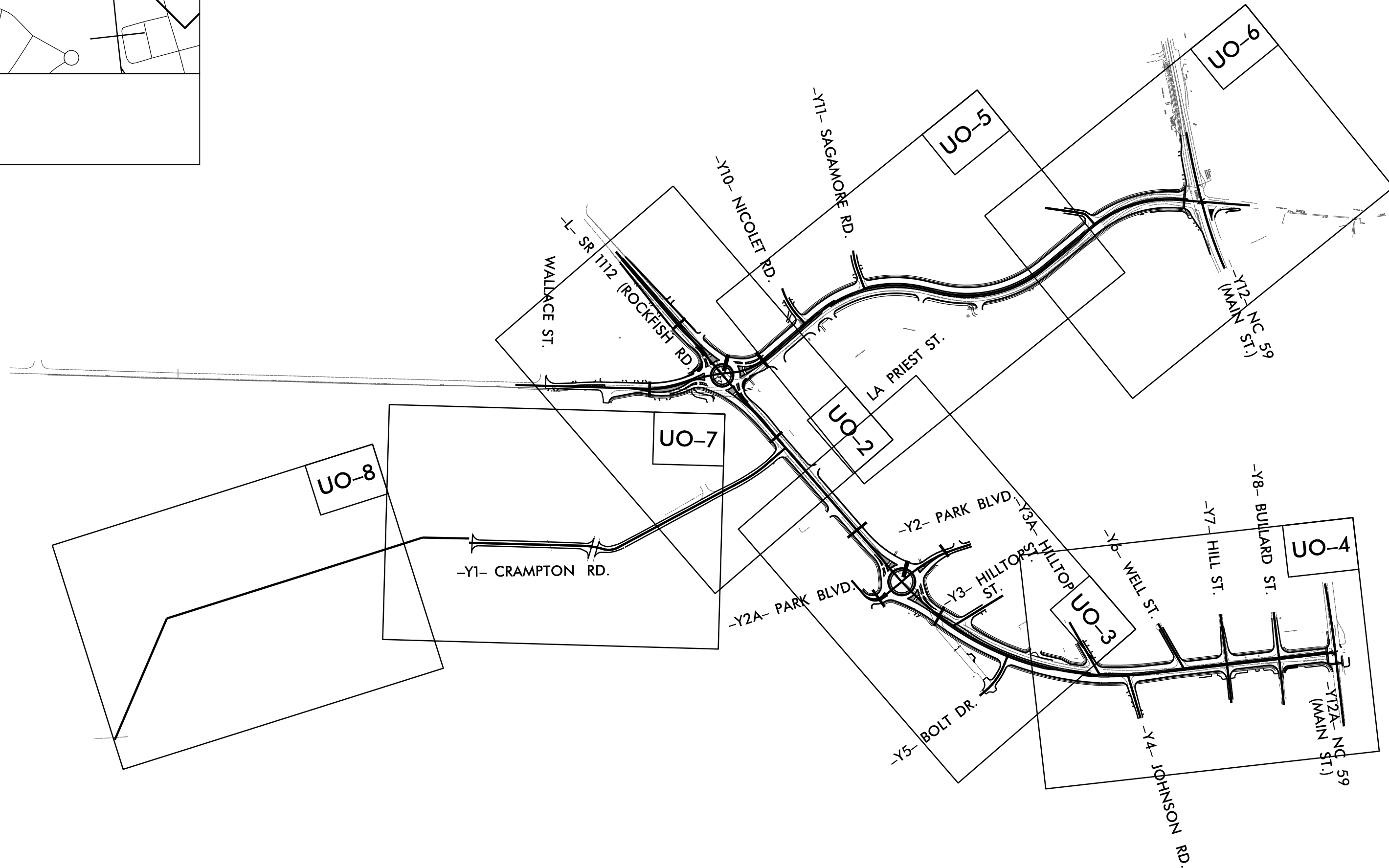
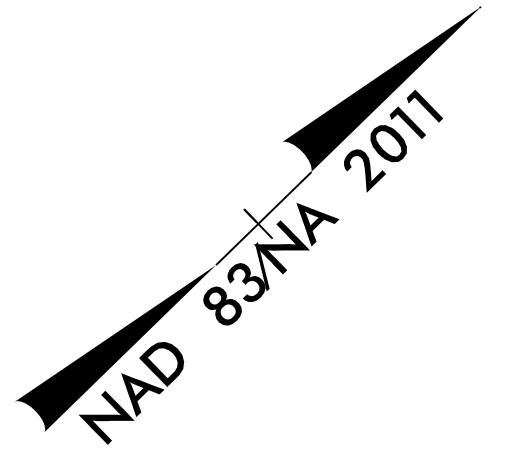
NOTE:
ALL UTILITY WORK SHOWN ON THIS SHEET WILL BE DONE BY OTHERS. NO PAYMENT WILL BE MADE TO THE CONTRACTOR FOR UTILITY WORK SHOWN ON THIS SHEET.



UTILITIES BY OTHERS PLANS CUMBERLAND COUNTY

LOCATION: SR 1112 (ROCKFISH ROAD) FROM WEST OF SR 1115 (GOLFVIEW ROAD) TO NC 59 (MAIN STREET) AND SR 1115 (GOLFVIEW ROAD) FROM SR 1112 (ROCKFISH ROAD) TO NC 59 (MAIN STREET)

TYPE OF WORK: POWER AND COMMUNICATIONS



INDEX OF SHEETS

SHEET NO.:	DESCRIPTION:
UO-1	TITLE SHEET
UO-2 THRU UO-8	UBO PLAN SHEETS

- UTILITY OWNERS WITH CONFLICTS**
- (A) DUKE ENERGY - POWER (DISTRIBUTION)
 - (B) PIEDMONT NATURAL GAS - GAS (DISTRIBUTION)
 - (C) BRIGHTSPEED - COMMUNICATIONS
 - (D) FAYETTEVILLE PWC - COMMUNICATIONS
 - (E) CHARTER - COMMUNICATIONS
 - (F) SEGRA - COMMUNICATIONS
 - (G) METRONET - COMMUNICATIONS

PREPARED IN THE OFFICE OF:

TRANSYSTEMS

1 Glenwood Avenue
Raleigh, NC 27603
Tel: 919.789.9977
Fax: 919.789.9591
License: F-0453

WILLIAM POPE, PE CONSULTANT CONTACT

**DIVISION OF HIGHWAYS
UTILITIES UNIT**

1555 MAIL SERVICES CENTER
RALEIGH, NC 27699-1555
PHONE (919) 707-6690
FAX (919) 250-4151

RICK HANDLIN UTILITIES ENGINEER
JOHN WALTERS UTILITIES COORDINATOR

9/24/2024
USER:WDope

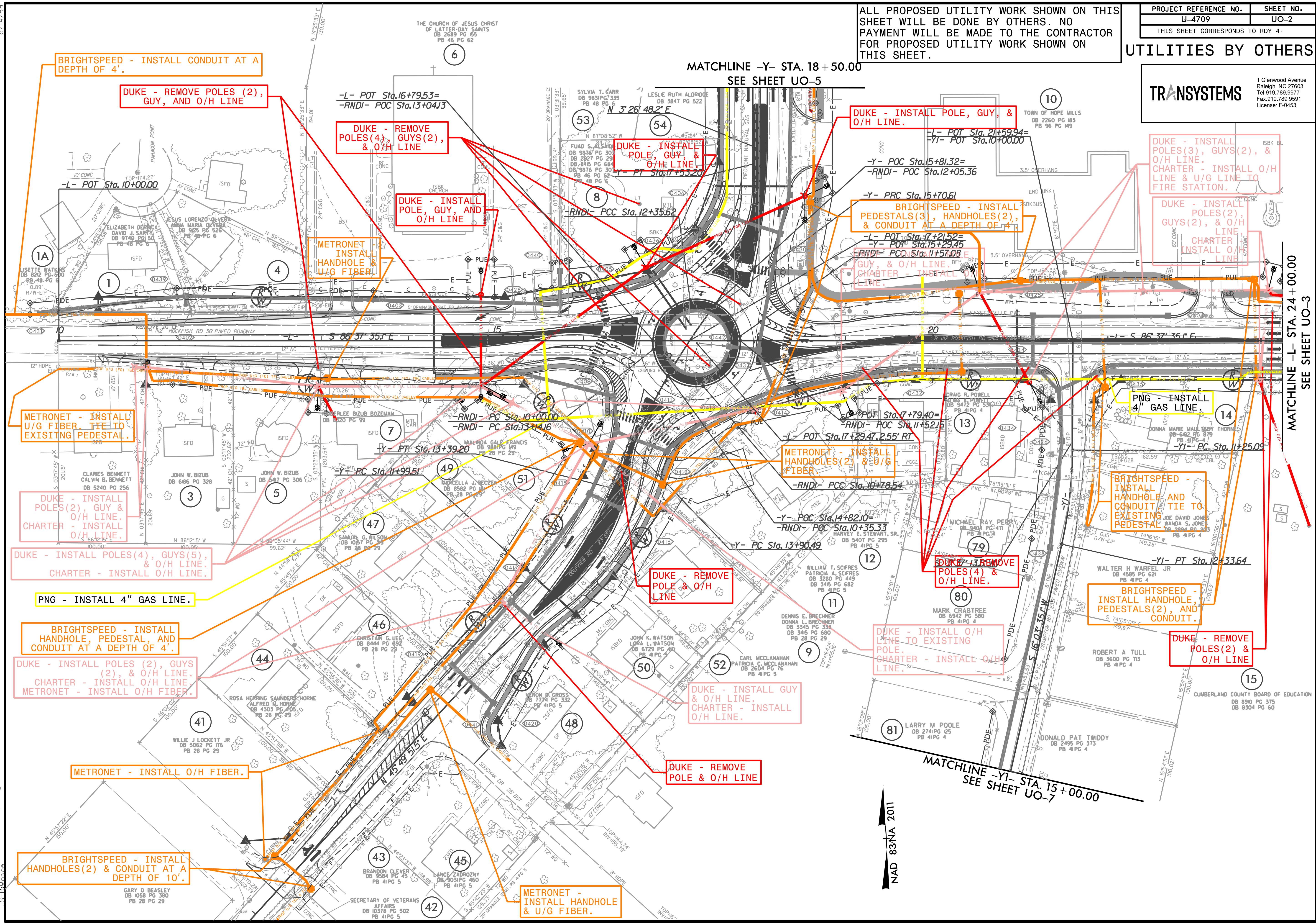
5/14/99
9/24/2013 3:00:00 Ut_4_LU02_psh.dgn

ALL PROPOSED UTILITY WORK SHOWN ON THIS SHEET WILL BE DONE BY OTHERS. NO PAYMENT WILL BE MADE TO THE CONTRACTOR FOR PROPOSED UTILITY WORK SHOWN ON THIS SHEET.

PROJECT REFERENCE NO.	SHEET NO.
U-4709	UO-2
THIS SHEET CORRESPONDS TO RDY 4	

UTILITIES BY OTHERS

TRANSYSTEMS
1 Glenwood Avenue
Raleigh, NC 27603
Tel: 919.789.9977
Fax: 919.789.9591
License: F-0453



MATCHLINE -L- STA. 24+00.00
SEE SHEET UO-3

NAD 83 NA 2011

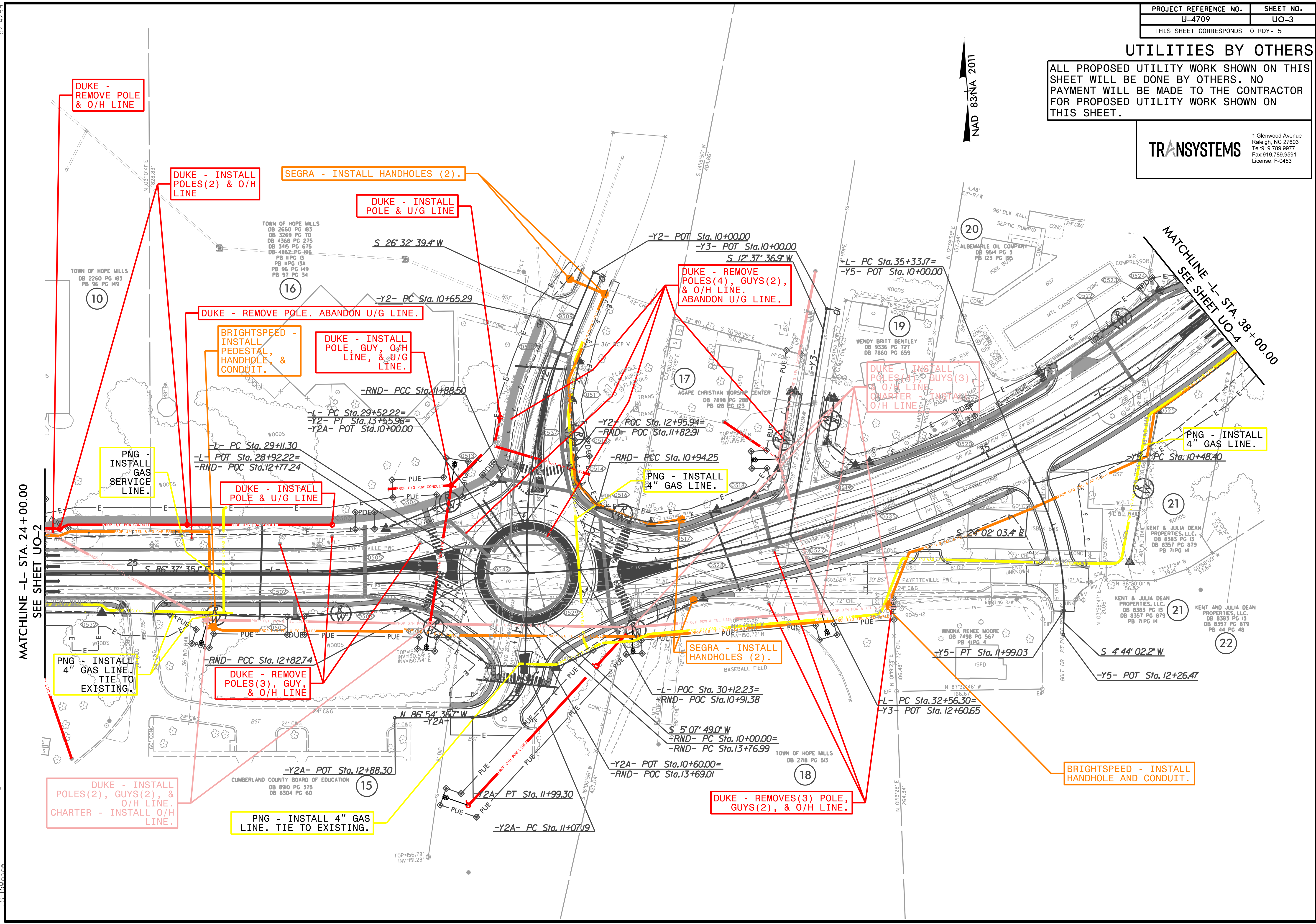
UTILITIES BY OTHERS

ALL PROPOSED UTILITY WORK SHOWN ON THIS SHEET WILL BE DONE BY OTHERS. NO PAYMENT WILL BE MADE TO THE CONTRACTOR FOR PROPOSED UTILITY WORK SHOWN ON THIS SHEET.

TRANSYSTEMS

1 Glenwood Avenue
Raleigh, NC 27603
Tel: 919.789.9377
Fax: 919.789.9591
License: F-0453

NAD 83 N 2011



MATCHLINE -L- STA. 24 + 00.00
SEE SHEET UO-2

MATCHLINE -L- STA. 38 + 00.00
SEE SHEET UO-4

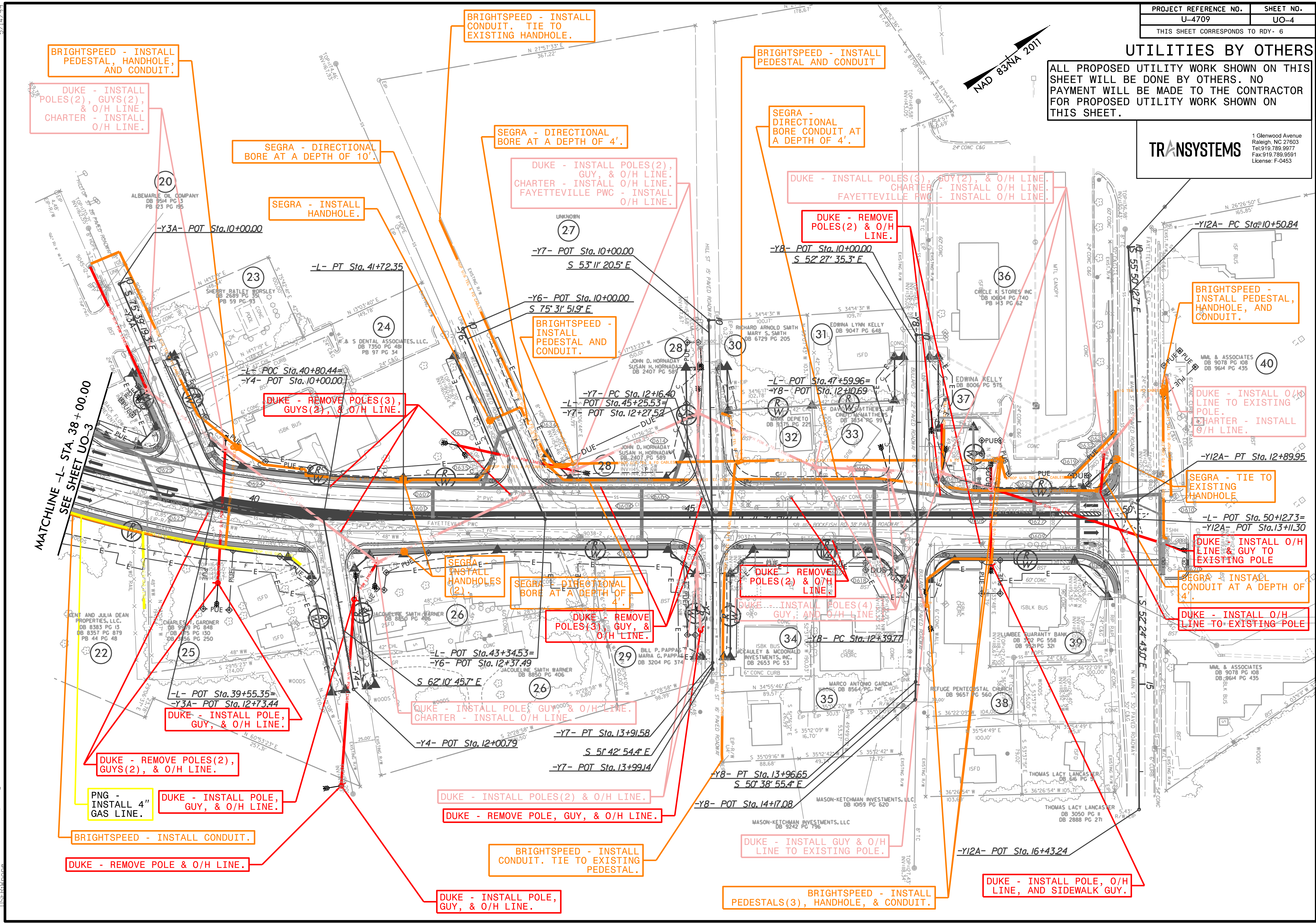
5/14/99
9/24/2021 3:00 Ut_5_UO3_psh.dgn

UTILITIES BY OTHERS

ALL PROPOSED UTILITY WORK SHOWN ON THIS SHEET WILL BE DONE BY OTHERS. NO PAYMENT WILL BE MADE TO THE CONTRACTOR FOR PROPOSED UTILITY WORK SHOWN ON THIS SHEET.

TRANSYSTEMS

1 Glenwood Avenue
Raleigh, NC 27603
Tel: 919.789.9377
Fax: 919.789.9591
License: F-0453



BRIGHTSPEED - INSTALL PEDESTAL, HANDHOLE, AND CONDUIT.

DUKE - INSTALL POLES(2), GUYS(2), & O/H LINE. CHARTER - INSTALL O/H LINE.

SEGRA - DIRECTIONAL BORE AT A DEPTH OF 10'.

SEGRA - INSTALL HANDHOLE.

BRIGHTSPEED - INSTALL CONDUIT. TIE TO EXISTING HANDHOLE.

SEGRA - DIRECTIONAL BORE AT A DEPTH OF 4'.

DUKE - INSTALL POLES(2), GUY, & O/H LINE. CHARTER - INSTALL O/H LINE. FAYETTEVILLE PWC - INSTALL O/H LINE.

BRIGHTSPEED - INSTALL PEDESTAL AND CONDUIT

SEGRA - DIRECTIONAL BORE CONDUIT AT A DEPTH OF 4'.

DUKE - INSTALL POLES(3), GUY(2), & O/H LINE. CHARTER - INSTALL O/H LINE. FAYETTEVILLE PWC - INSTALL O/H LINE.

DUKE - REMOVE POLES(2) & O/H LINE.

BRIGHTSPEED - INSTALL PEDESTAL, HANDHOLE, AND CONDUIT.

DUKE - INSTALL O/H LINE TO EXISTING POLE. CHARTER - INSTALL O/H LINE.

SEGRA - TIE TO EXISTING HANDHOLE

DUKE - INSTALL O/H LINE & GUY TO EXISTING POLE

SEGRA - INSTALL CONDUIT AT A DEPTH OF 4'.

DUKE - INSTALL O/H LINE TO EXISTING POLE

MATCHLINE -L- STA. 38+00.00 SEE SHEET UO-3

PNG - INSTALL 4" GAS LINE.

DUKE - INSTALL POLE, GUY, & O/H LINE.

BRIGHTSPEED - INSTALL CONDUIT.

DUKE - REMOVE POLE & O/H LINE.

DUKE - INSTALL POLE, GUY, & O/H LINE. CHARTER - INSTALL O/H LINE.

DUKE - REMOVE POLES(2), GUYS(2), & O/H LINE.

DUKE - INSTALL POLES(2) & O/H LINE.

DUKE - REMOVE POLE, GUY, & O/H LINE.

BRIGHTSPEED - INSTALL CONDUIT. TIE TO EXISTING PEDESTAL.

DUKE - INSTALL POLE, GUY, & O/H LINE.

DUKE - INSTALL GUY & O/H LINE TO EXISTING POLE.

BRIGHTSPEED - INSTALL PEDESTALS(3), HANDHOLE, & CONDUIT.

DUKE - INSTALL POLE, O/H LINE, AND SIDEWALK GUY.

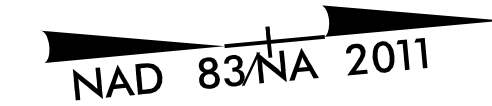
5/14/2011 9:24:18 AM 3.00_Ut_6_UO4_psh.dgn

UTILITIES BY OTHERS

ALL PROPOSED UTILITY WORK SHOWN ON THIS SHEET WILL BE DONE BY OTHERS. NO PAYMENT WILL BE MADE TO THE CONTRACTOR FOR PROPOSED UTILITY WORK SHOWN ON THIS SHEET.

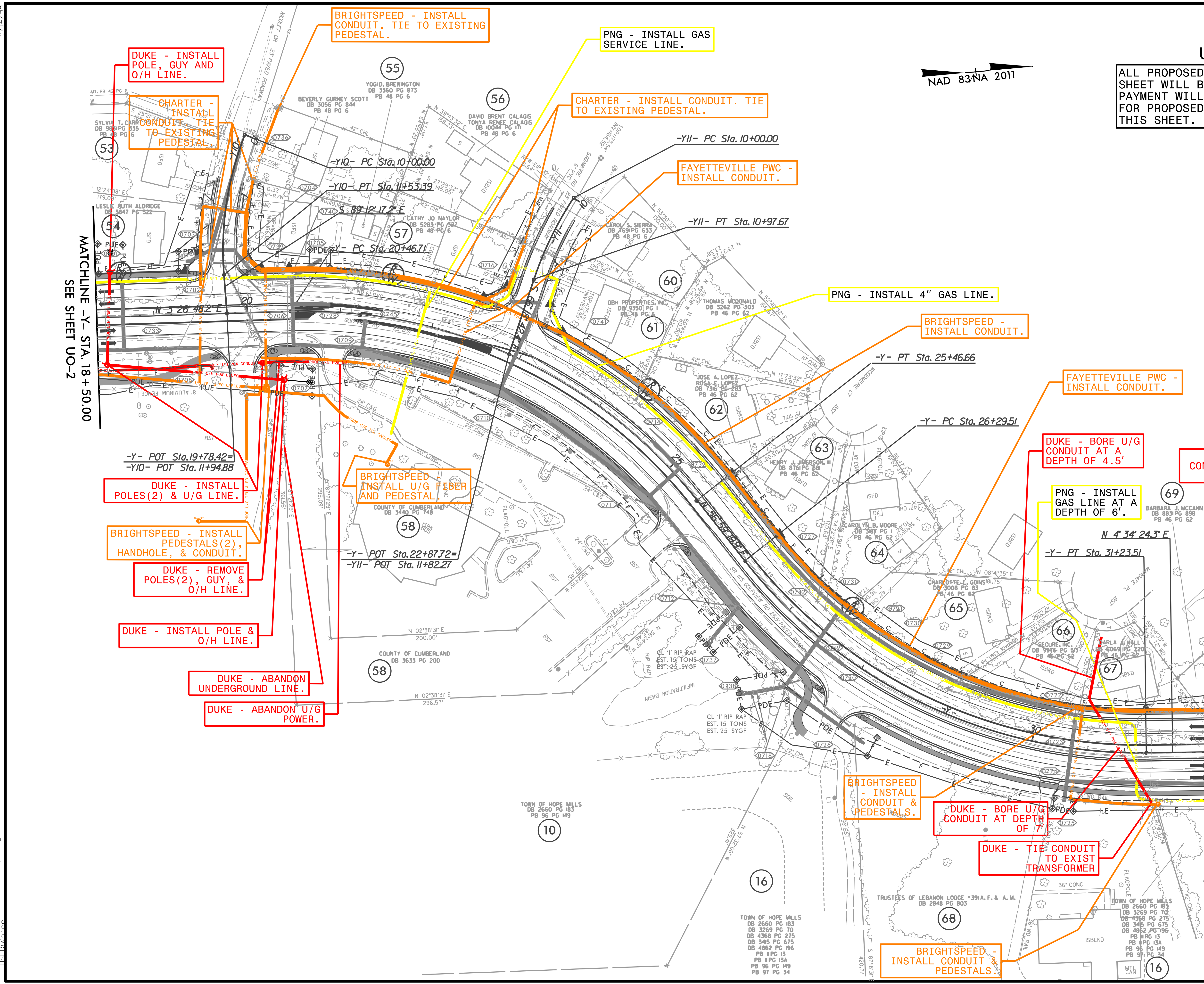
TRANSYSTEMS

1 Glenwood Avenue
Raleigh, NC 27603
Tel: 919.789.9377
Fax: 919.789.9591
License: F-0453



MATCHLINE -Y- STA. 18 + 50.00
SEE SHEET UO-2

MATCHLINE -Y- STA. 32 + 00.00
SEE SHEET UO-6

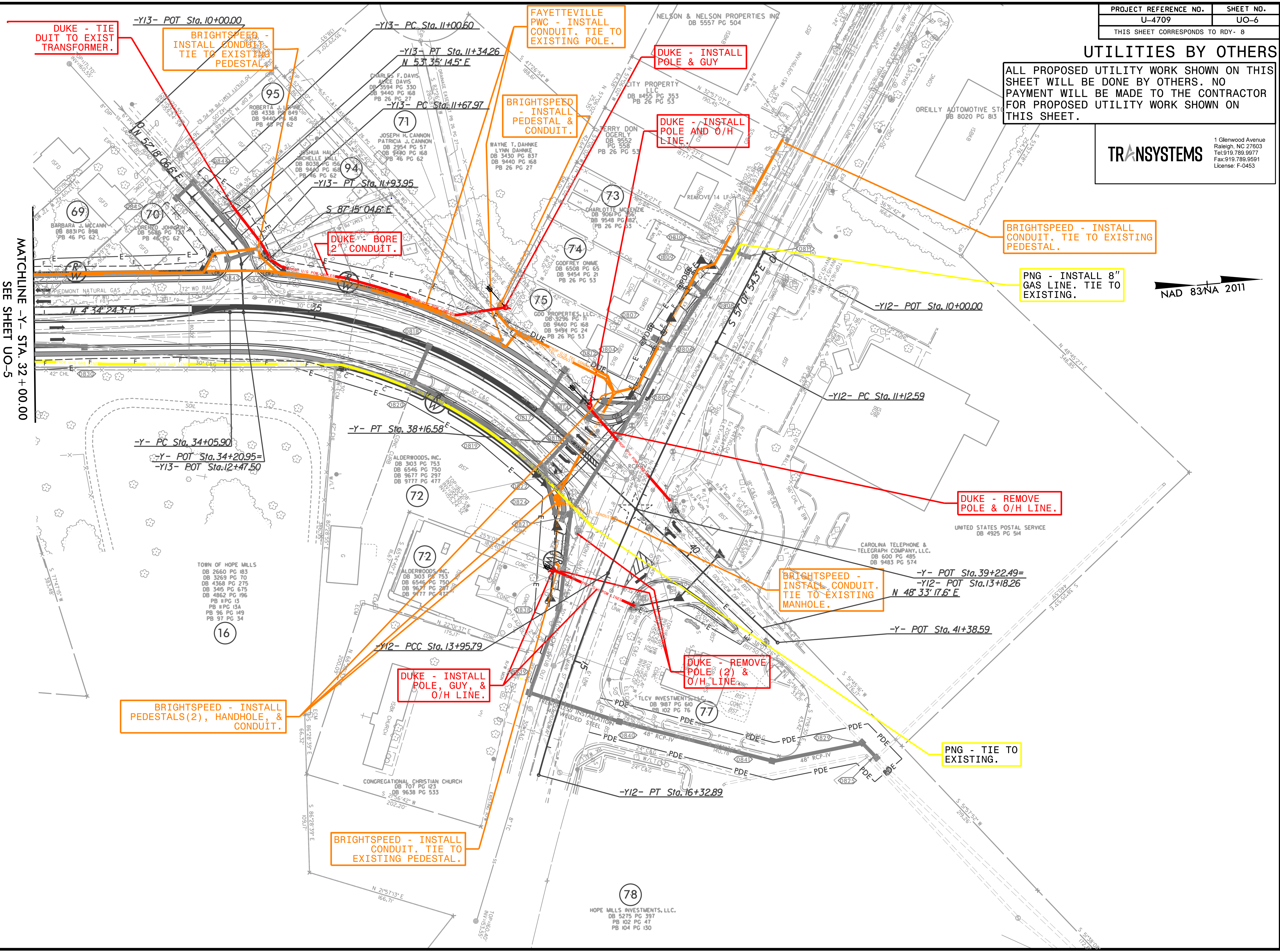


9/24/2013 10:00:00 Ut_7_U05_psh.dgn

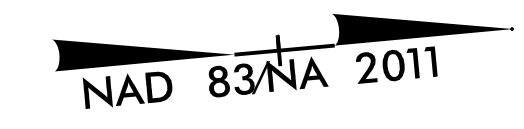
UTILITIES BY OTHERS

ALL PROPOSED UTILITY WORK SHOWN ON THIS SHEET WILL BE DONE BY OTHERS. NO PAYMENT WILL BE MADE TO THE CONTRACTOR FOR PROPOSED UTILITY WORK SHOWN ON THIS SHEET.

TRANSYSTEMS
 1 Glenwood Avenue
 Raleigh, NC 27603
 Tel: 919.789.9377
 Fax: 919.789.9591
 License: F-0453



MATCHLINE -Y- STA. 32+00.00
SEE SHEET UO-5



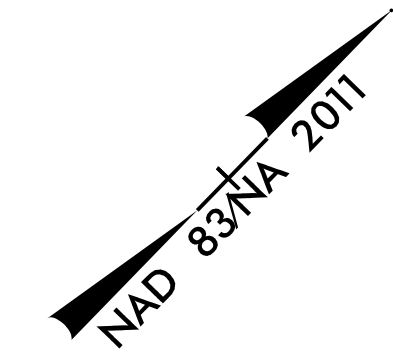
9/24/2013 10:00:00 Ut_8_U06-psht.dgn

UTILITIES BY OTHERS

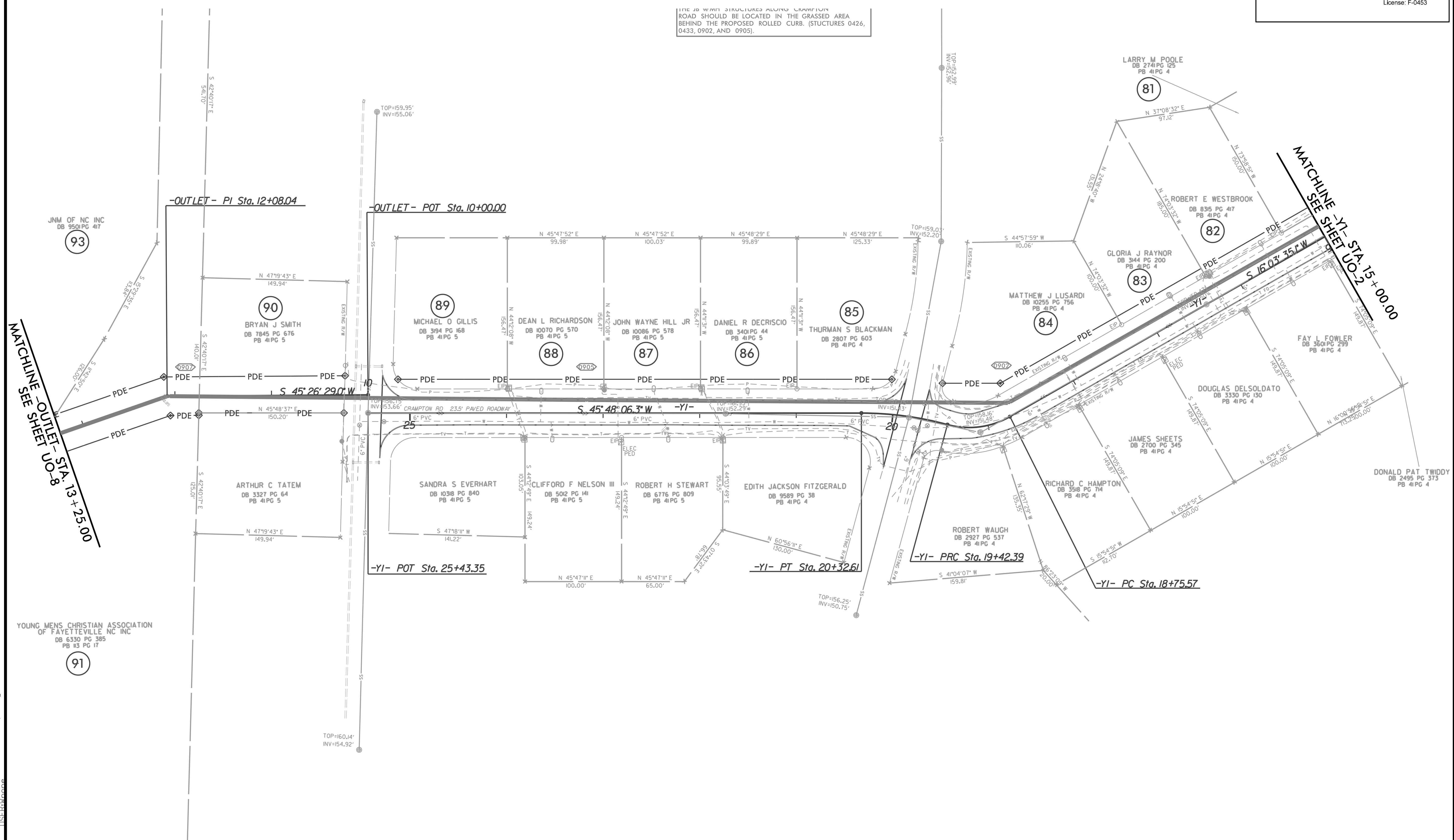
ALL PROPOSED UTILITY WORK SHOWN ON THIS SHEET WILL BE DONE BY OTHERS. NO PAYMENT WILL BE MADE TO THE CONTRACTOR FOR PROPOSED UTILITY WORK SHOWN ON THIS SHEET.

TRANSYSTEMS

1 Glenwood Avenue
Raleigh, NC 27603
Tel: 919.789.9377
Fax: 919.789.9591
License: F-0453



THE JO W/M STRUCTURES ALONG CRAMPTON ROAD SHOULD BE LOCATED IN THE GRASSED AREA BEHIND THE PROPOSED ROLLED CURB. (STRUCTURES 0426, 0433, 0902, AND 0905).



MATCHLINE SEE SHEET UO-8 STA. 13+23.00

MATCHLINE SEE SHEET UO-2 STA. 15+00.00

YOUNG MENS CHRISTIAN ASSOCIATION OF FAYETTEVILLE NC INC
DB 6330 PG 385
PB 13 PG 17
91

