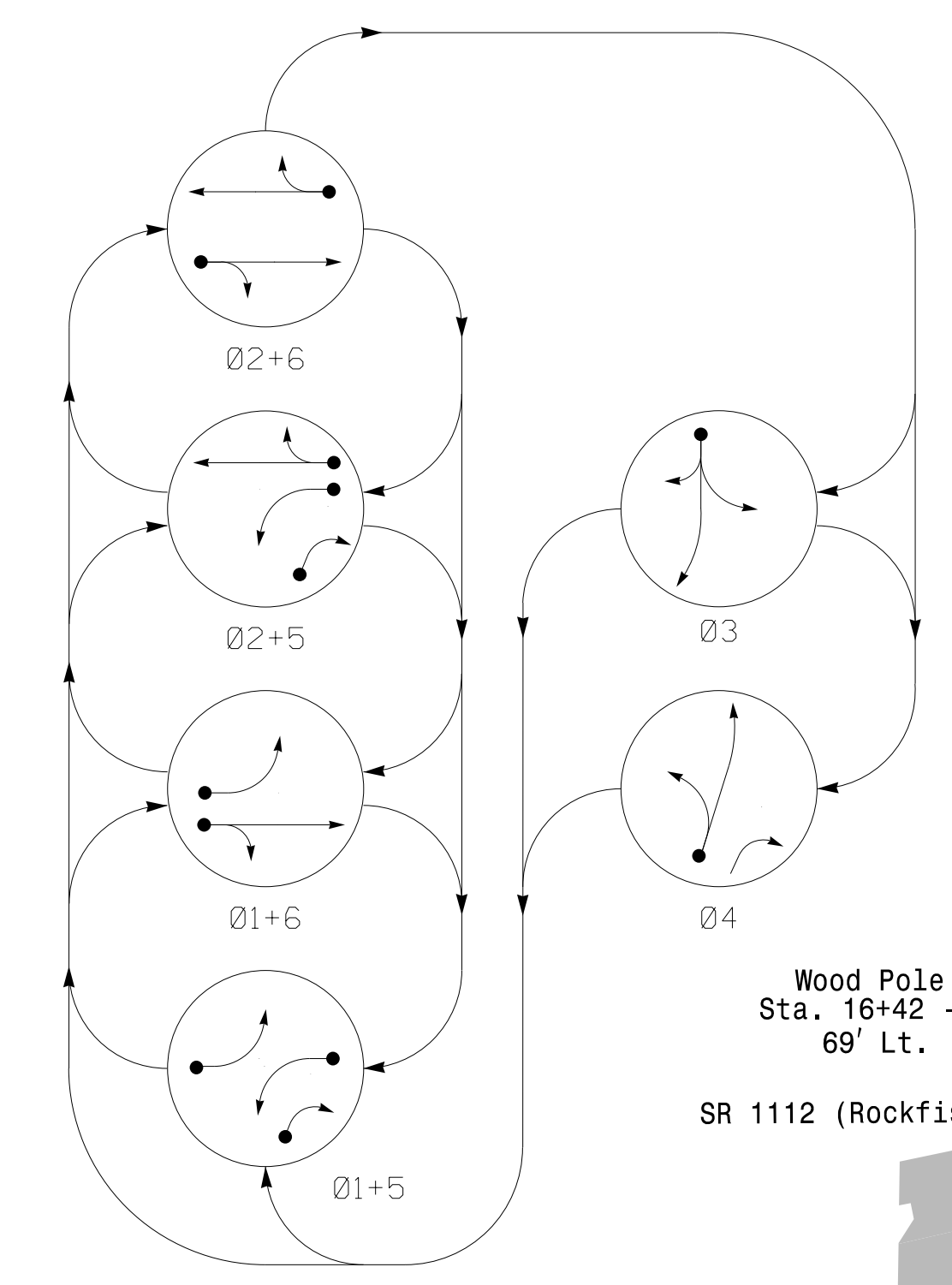


PHASING DIAGRAM



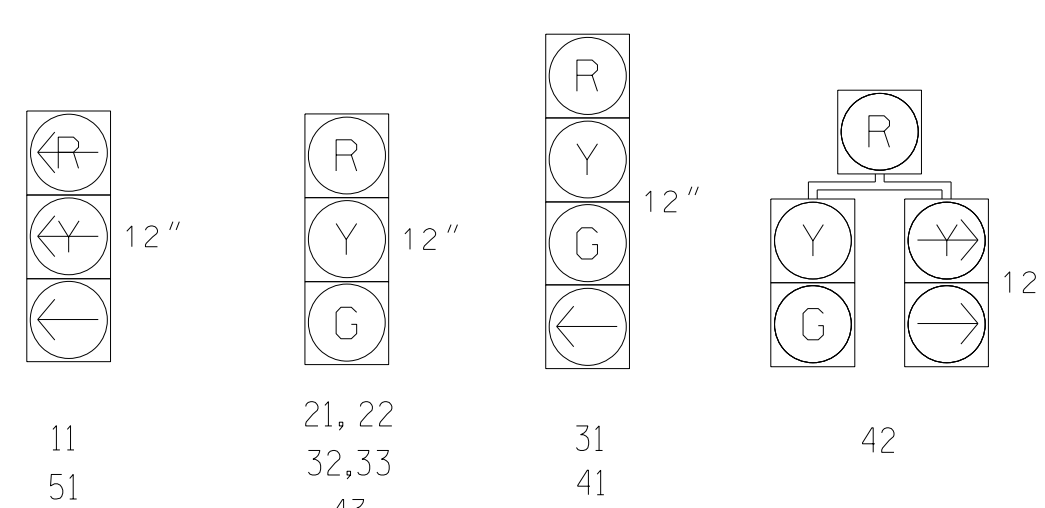
PHASING DIAGRAM DETECTION LEGEND

- DETECTED MOVEMENT
- UNDETECTED MOVEMENT (OVERLAP)
- UNSIGNALIZED MOVEMENT
- PEDESTRIAN MOVEMENT

TABLE OF OPERATION

SIGNAL FACE	PHASE					
	01+5	02+5	02+6	03	04	05+6
11	←	←	←	←	←	←
21,22	R	R	G	G	R	R
31	R	R	R	R	G	R
32,33	R	R	R	R	G	R
41	R	R	R	R	G	R
42	R	R	R	R	G	R
43	R	R	R	R	G	R
51	←	←	←	←	←	←
61,62	R	G	R	G	R	Y

SIGNAL FACE I.D.
All Heads L.E.D.



MAXTIME DETECTOR INSTALLATION CHART

ZONE	SIZE (FT)	DISTANCE FROM STOPBAR (FT)	TURNS	NEW ZONE	PROGRAMMING							
					CALL PHASE	SWITCH PHASE	DELAY TIME	EXTEND TIME	EXTEND	ADDED INITIAL CALL	DELAY DURING GREEN	NEW CARD
*1A	6X60	0	*	X	1	-	-	-	X	-	X	-
*2A	6X6	70	*	X	2	-	-	-	X	-	X	-
*3A	6X60	0	*	X	3	-	-	-	X	-	X	-
*4A	6X60	0	*	X	4	-	-	-	X	-	X	-
*5A	6X60	0	*	X	5	-	-	-	X	-	X	-
*5B**	6X60	0	*	X	5	4	15	-	X	-	X	-
*6A	6X6	70	*	X	6	-	-	-	X	-	X	-

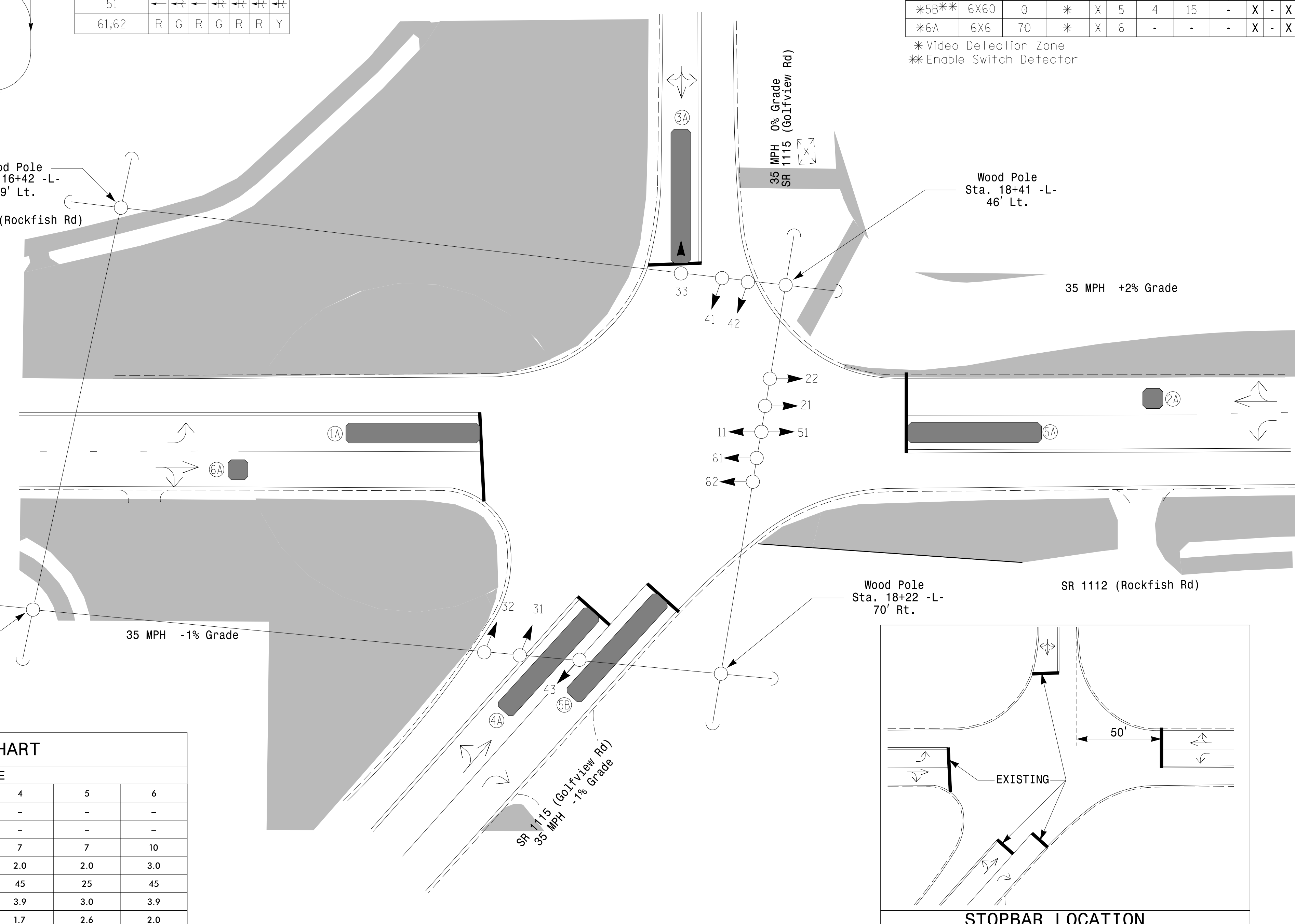
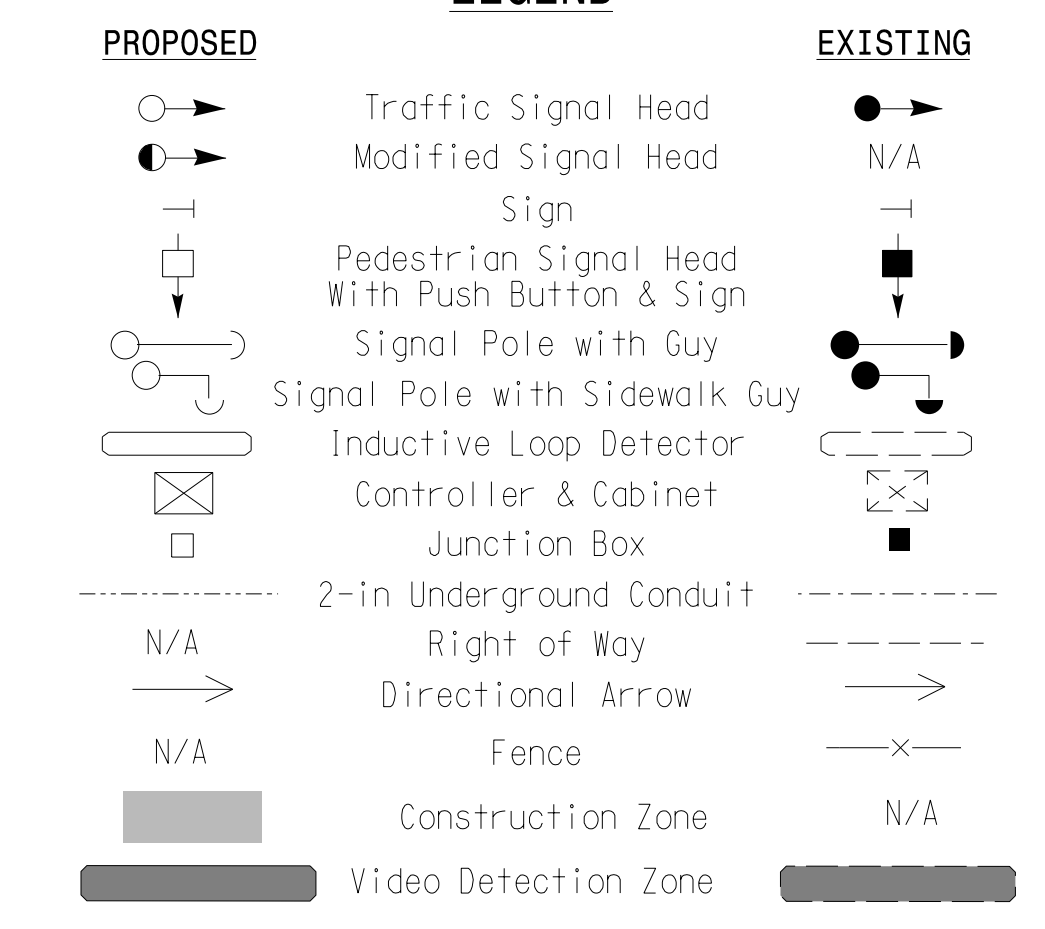
* Video Detection Zone
** Enable Switch Detector

6 Phase Fully Actuated System #D06-03_Hope Mills

NOTES

- Refer to "Roadway Standard Drawings NCDOT" dated January 2024 and "Standard Specifications for Roads and Structures" dated January 2024.
- Do not program signal for late night flashing operation unless otherwise directed by the Engineer.
- Phase 1 and/or phase 5 may be lagged.
- The order of phase 3 and phase 4 may be reversed.
- Set all detector units to presence mode.
- This intersection uses video detection. Install detectors according to the manufacturer's instructions in order to achieve the desired detection.
- Maximum times shown in timing chart are for free-run operation only. Coordinated signal system timing values supersede these values.
- Install new controller in existing cabinet.

LEGEND



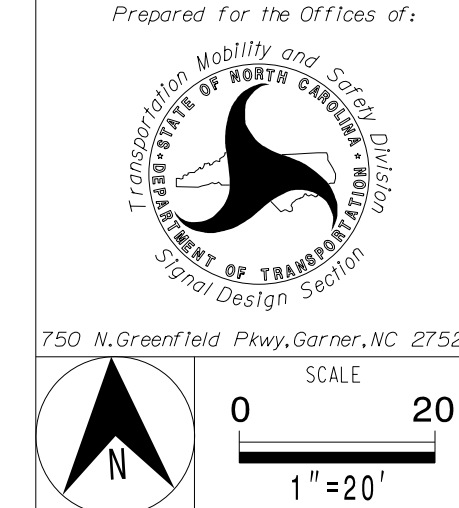
MAXTIME TIMING CHART

FEATURE	PHASE					
	1	2	3	4	5	6
Walk *	-	-	-	-	-	-
Ped Clear *	-	-	-	-	-	-
Min Green *	7	10	7	7	7	10
Passage *	2.0	3.0	2.0	2.0	2.0	3.0
Max 1 *	25	45	45	45	25	45
Yellow Change	3.0	3.7	3.8	3.9	3.0	3.9
Red Clear	2.4	1.9	2.0	1.7	2.6	2.0
Added Initial *	-	-	-	-	-	-
Maximum Initial *	-	-	-	-	-	-
Time Before Reduction *	-	-	-	-	-	-
Time To Reduce *	-	-	-	-	-	-
Minimum Gap	-	-	-	-	-	-
Advance Walk	-	-	-	-	-	-
Non Lock Detector	X	-	X	X	X	-
Vehicle Recall	-	MIN RECALL	-	-	-	MIN RECALL
Dual Entry	-	-	-	-	-	-

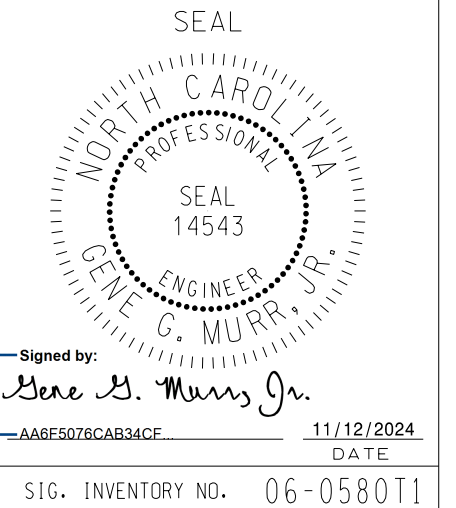
* These values may be field adjusted. Do not adjust Min Green and Passage times for phases 2 and 6 lower than what is shown. Min Green for all other phases should not be lower than 4 seconds.

Temporary Design 1 (TMP Phase 1)

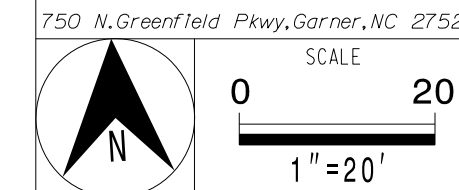
DOCUMENT NOT CONSIDERED FINAL UNLESS ALL SIGNATURES COMPLETED



SR 1112 (Rockfish Road) at SR 1115 (Golfview Road)
 Division 06 Cumberland County Hope Mills
 PLAN DATE: May 2024 REVIEWED BY: G.G. Murr, Jr.
 PREPARED BY: B.E. Wynn REVIEWED BY:
 REVISIONS: INIT. DATE



TRANSYSTEMS
 1 Glenwood Avenue
 Raleigh, NC 27603
 Tel: 919.789.9977
 Fax: 919.789.9591
 License: F-0453



11/12/2024
 AU-4709_s1g.dsn_060580T1.dgn
 USER: cefout