

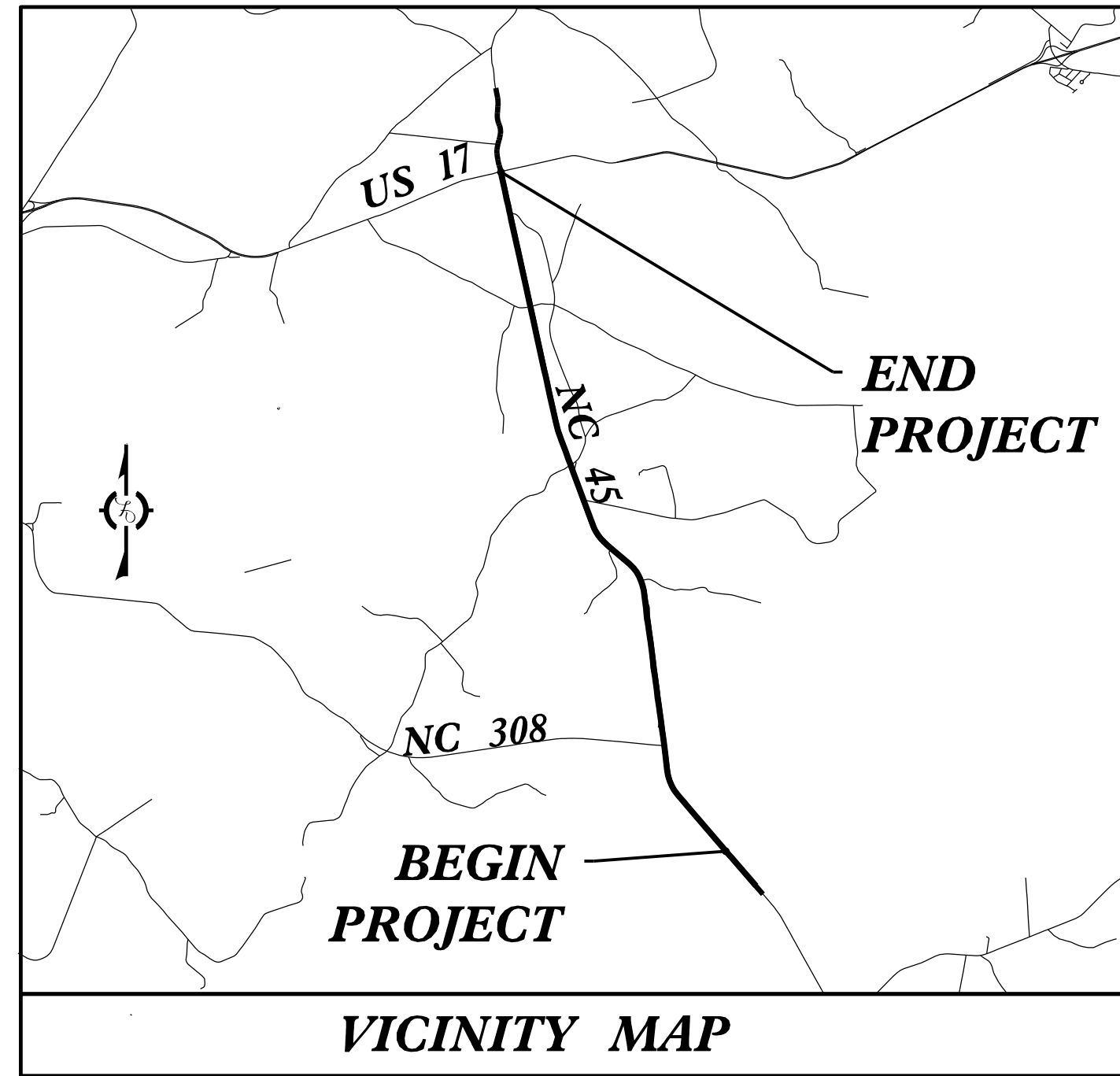
**TIP PROJECT: R-5809A**

STATE OF NORTH CAROLINA  
DIVISION OF HIGHWAYS

**UTILITIES BY OTHERS PLANS  
BERTIE COUNTY**

T.I.P. NO.	SHEET NO.
R-5809A	UO-1

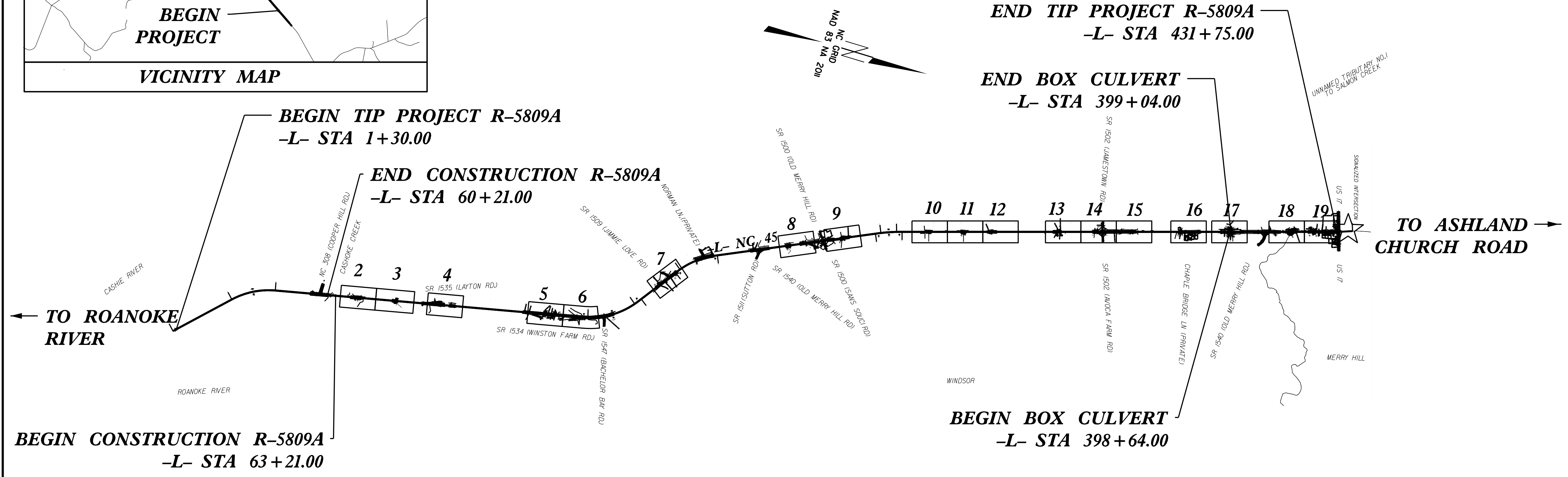
NOTE:  
ALL PROPOSED UTILITY WORK SHOWN ON THIS SHEET WILL BE DONE BY OTHERS. NO PAYMENT WILL BE MADE TO THE CONTRACTOR FOR PROPOSED UTILITY WORK SHOWN ON THIS SHEET.



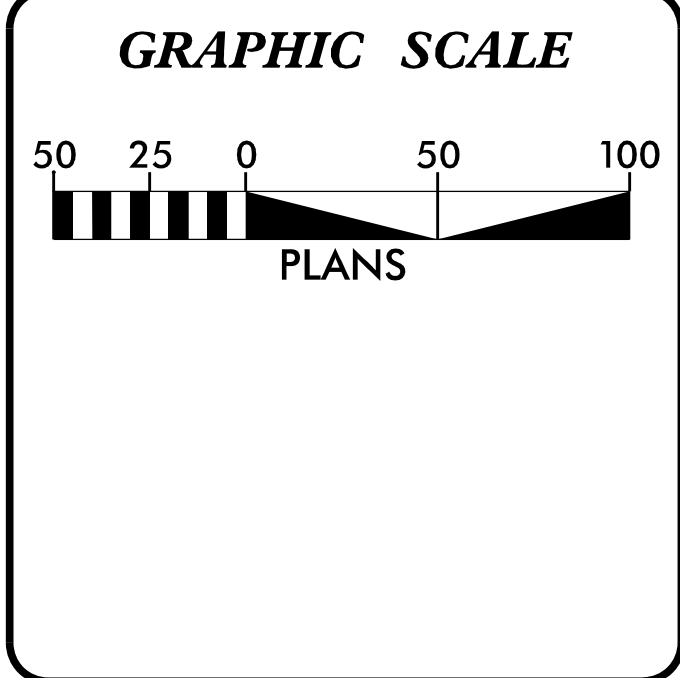
LOCATION: NC 45 0.98 MI. NORTH OF WASHINGTON COUNTY LINE TO 0.13 MI. SOUTH OF US 17 AT MIDWAY

TYPE OF WORK: RELOCATION OF POWER AND COMMUNICATION LINES

END TIP PROJECT R-5809A  
-L- STA 431+75.00



☆ DENOTES EXISTING TRAFFIC SIGNAL



INDEX OF SHEETS	
SHEET NO.	DESCRIPTION
UO-1	TITLE SHEET
UO-2 THRU UO-19	UTILITIES BY OTHERS PLAN SHEETS

UTILITY OWNERS WITH CONFLICTS
(A) COMM - BRIGHTSPEED
(B) COMM - MEDIACOM
(C) POWER - DOMINION

PREPARED IN THE OFFICE OF:

**Kimley»Horn**

NC LICENSE #P-0102  
421 FAYETTEVILLE STREET, SUITE 600  
RALEIGH, NORTH CAROLINA 27601  
PHONE: (919) 877-2000

VINCENT RICCIO, PE UTILITY COORDINATOR

DIVISION OF HIGHWAYS  
UTILITIES UNIT

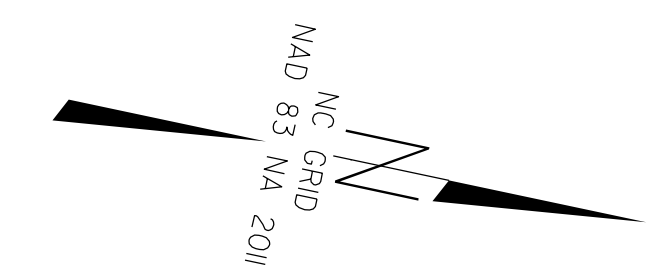
1555 MAIL SERVICES CENTER  
RALEIGH, NC 27699-1555  
PHONE (919) 707-6690  
FAX (919) 250-4151

TANGA SAMPSON UTILITIES REGIONAL COORDINATOR  
TEVIN ASAMOAH UTILITIES ENGINEER  
TYRON STALLINGS UTILITIES COORDINATOR

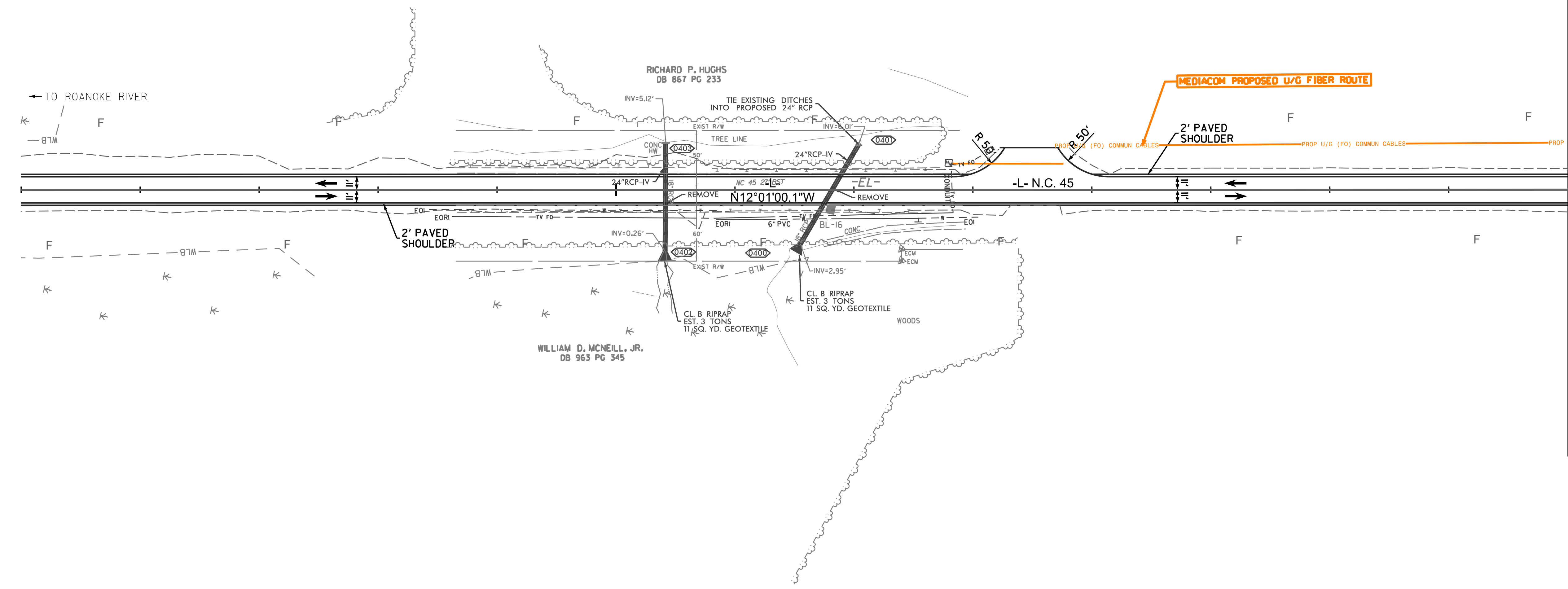
PROJECT REFERENCE NO.	SHEET NO.
R-5809A	U0-02
THIS SHEET CORRESPONDS TO RDY-4	

### UTILITIES BY OTHERS

NOTE:  
 ALL UTILITY WORK SHOWN ON THIS SHEET WILL BE DONE BY OTHERS. NO PAYMENT WILL BE MADE TO THE CONTRACTOR FOR UTILITY WORK SHOWN ON THIS SHEET.



70



MATCHLINE - L - STA. 78+00.00  
SEE PLAN SHEET 3

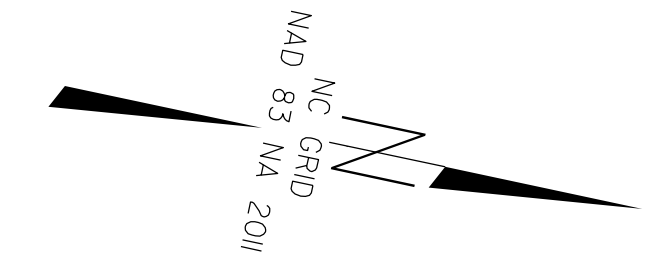
\$FILE\$.  
6/5/2024



PROJECT REFERENCE NO.	SHEET NO.
R-5809A	U0-03
THIS SHEET CORRESPONDS TO RDY-5	

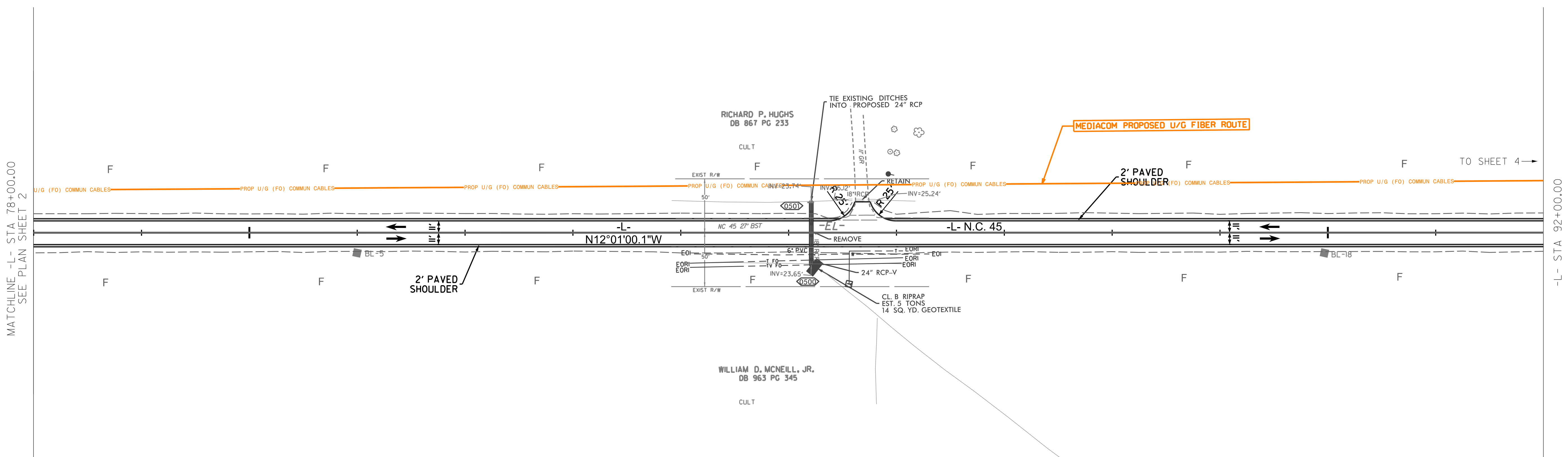
### UTILITIES BY OTHERS

NOTE:  
 ALL UTILITY WORK SHOWN ON THIS SHEET WILL BE DONE BY OTHERS. NO PAYMENT WILL BE MADE TO THE CONTRACTOR FOR UTILITY WORK SHOWN ON THIS SHEET.



80

06



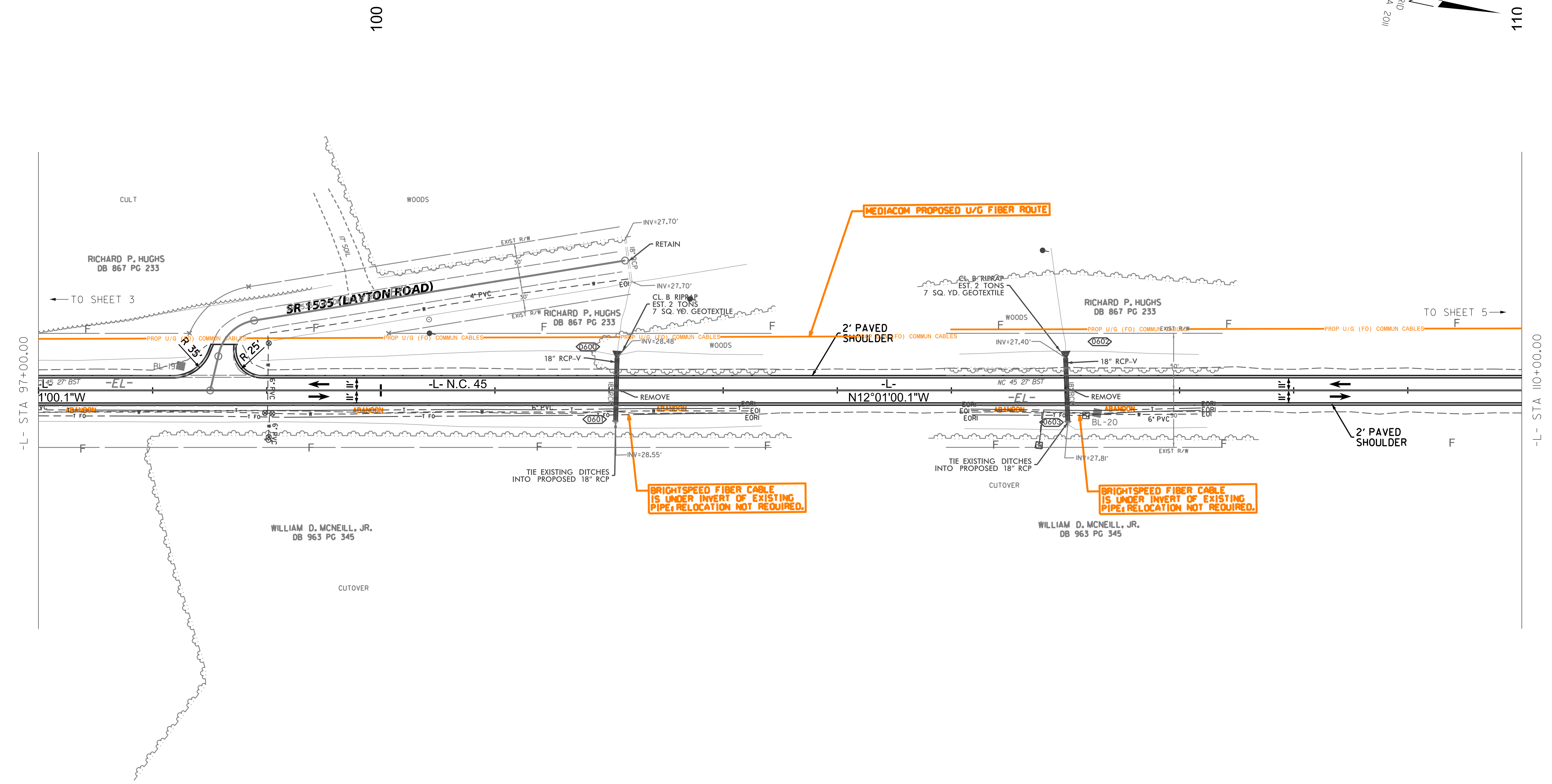
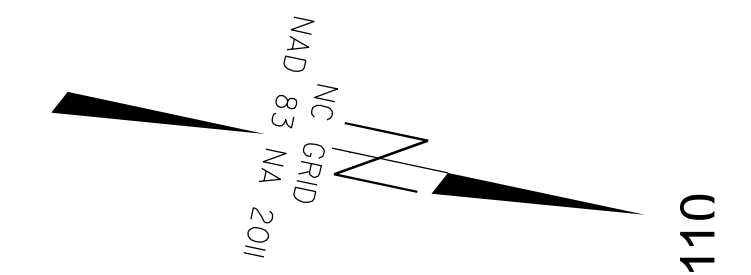
\$FILE\$  
6/5/2024



PROJECT REFERENCE NO.	SHEET NO.
R-5809A	U0-04
THIS SHEET CORRESPONDS TO RDY-6	

### UTILITIES BY OTHERS

NOTE:  
 ALL UTILITY WORK SHOWN ON THIS SHEET WILL BE DONE BY OTHERS. NO PAYMENT WILL BE MADE TO THE CONTRACTOR FOR UTILITY WORK SHOWN ON THIS SHEET.



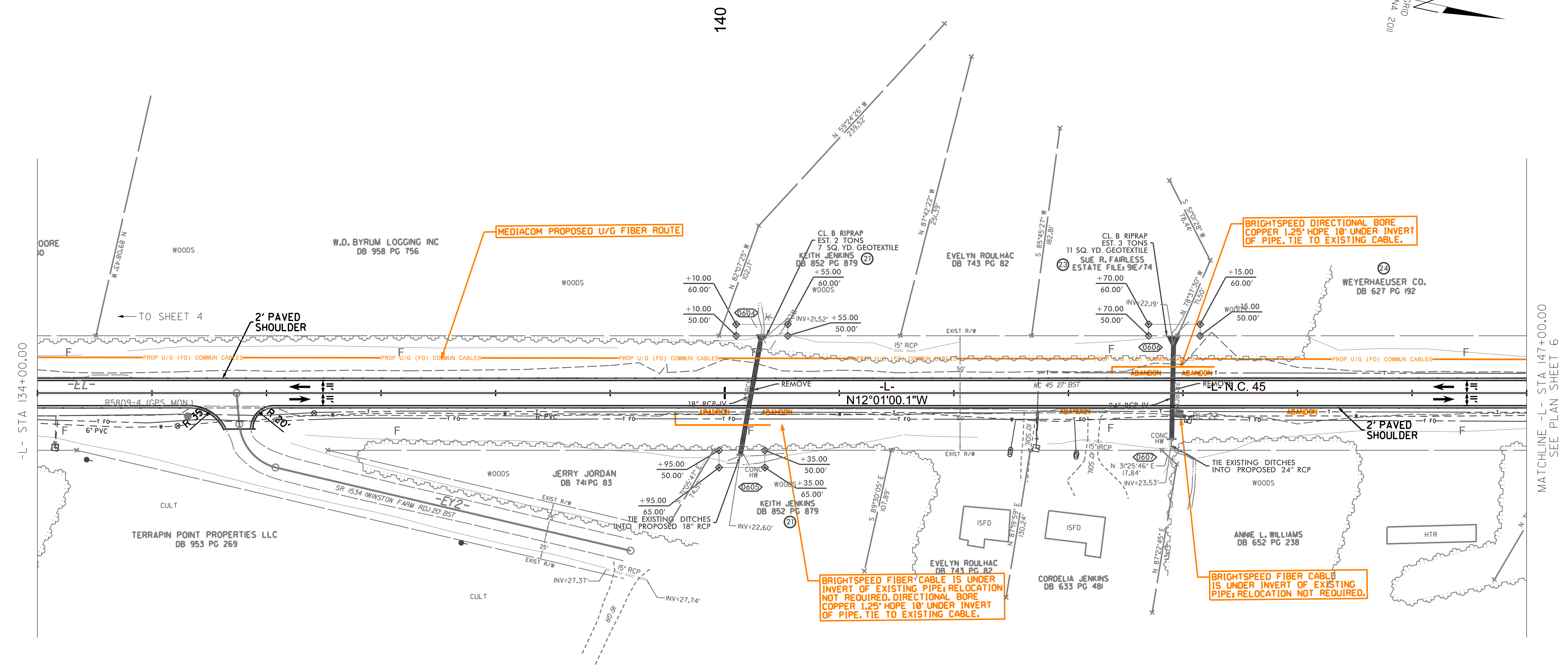
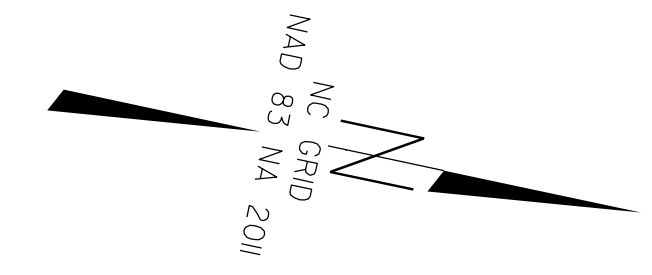
\$FILE\$.  
6/5/2024





### UTILITIES BY OTHERS

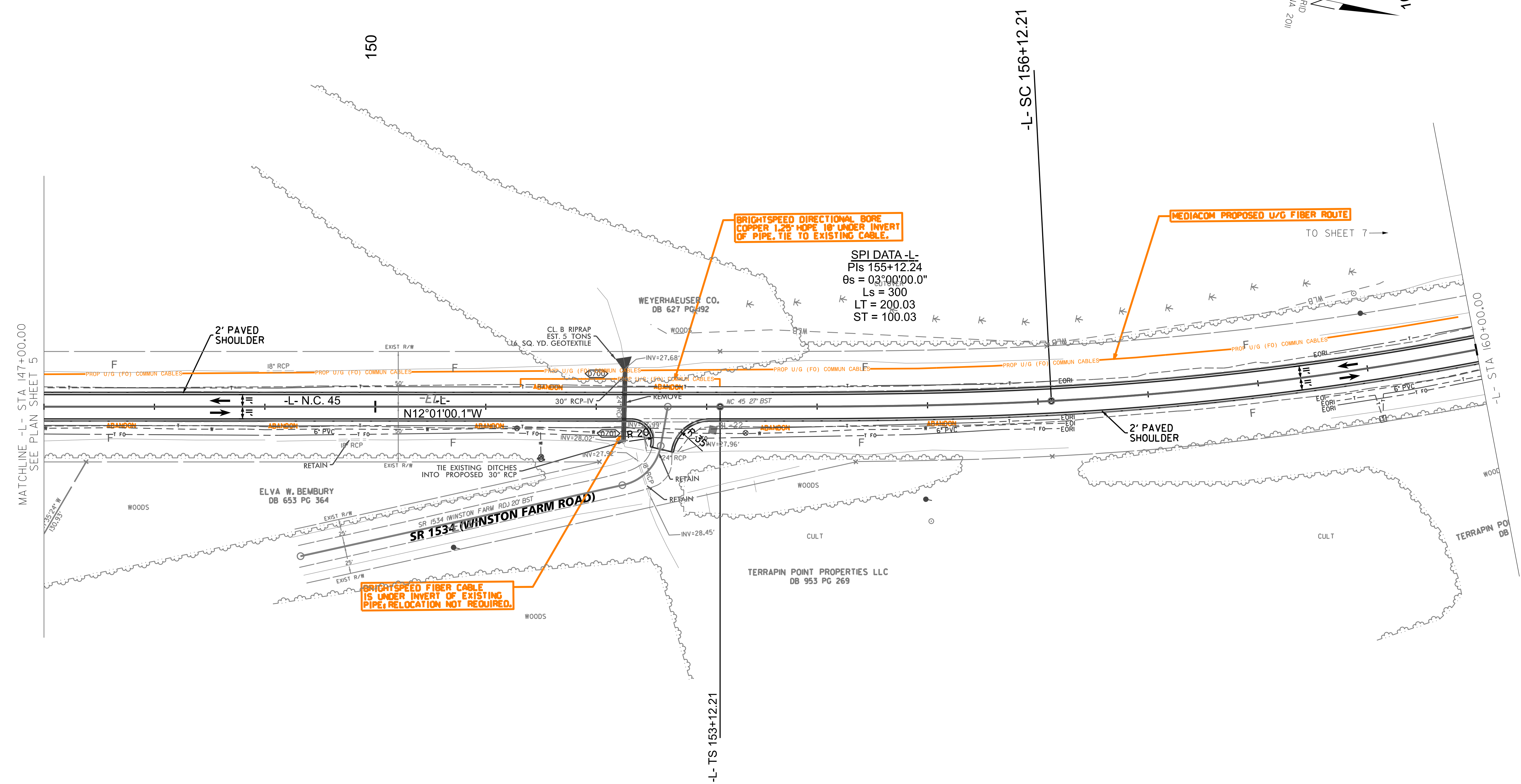
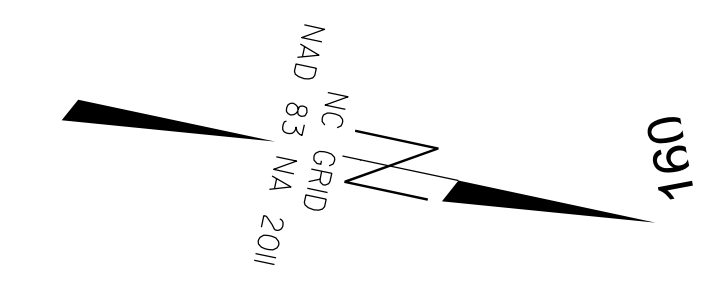
NOTE:  
 ALL UTILITY WORK SHOWN ON THIS SHEET WILL BE DONE BY OTHERS. NO PAYMENT WILL BE MADE TO THE CONTRACTOR FOR UTILITY WORK SHOWN ON THIS SHEET.



\$FILE\$.S  
6/5/2024

### UTILITIES BY OTHERS

NOTE:  
 ALL UTILITY WORK SHOWN ON THIS SHEET WILL BE DONE BY OTHERS. NO PAYMENT WILL BE MADE TO THE CONTRACTOR FOR UTILITY WORK SHOWN ON THIS SHEET.



BRIGHTSPEED DIRECTIONAL BORE  
 COPPER 1.25\"/>

MEDIACOM PROPOSED U/G FIBER ROUTE

SPI DATA -L-  
 PIs 155+12.24  
 $\theta_s = 0.3^\circ$   
 Ls = 300  
 LT = 200.03  
 ST = 100.03

BRIGHTSPEED FIBER CABLE  
 IS UNDER INVERT OF EXISTING  
 PIPE; RELOCATION NOT REQUIRED.

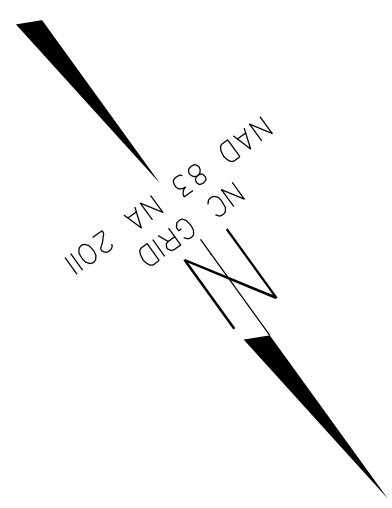
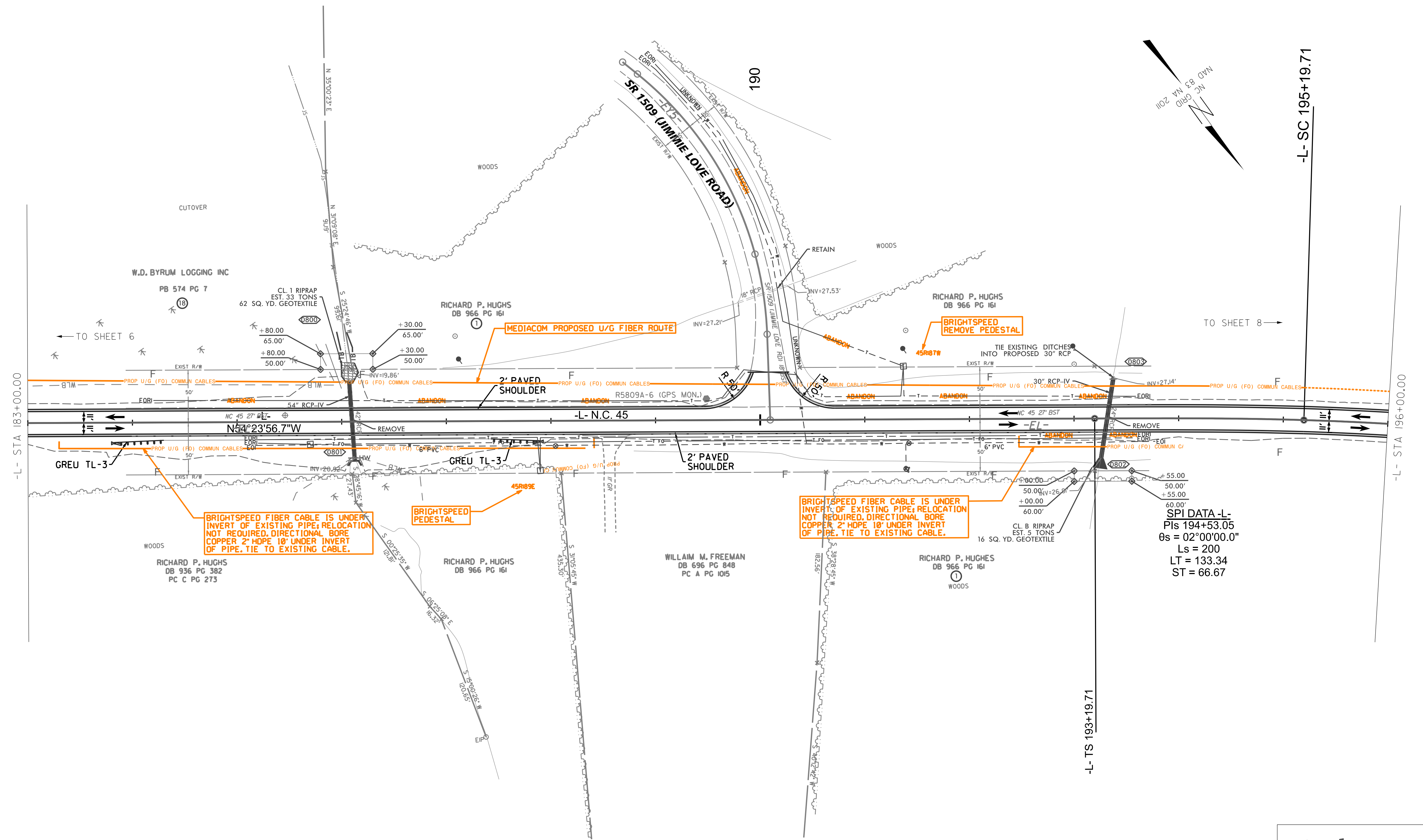
MATCHLINE -L- STA 147+00.00  
 SEE PLAN SHEET 5

6/5/2024 \$FILE\$.



### UTILITIES BY OTHERS

**NOTE:**  
 ALL UTILITY WORK SHOWN ON THIS SHEET WILL BE DONE BY OTHERS. NO PAYMENT WILL BE MADE TO THE CONTRACTOR FOR UTILITY WORK SHOWN ON THIS SHEET.



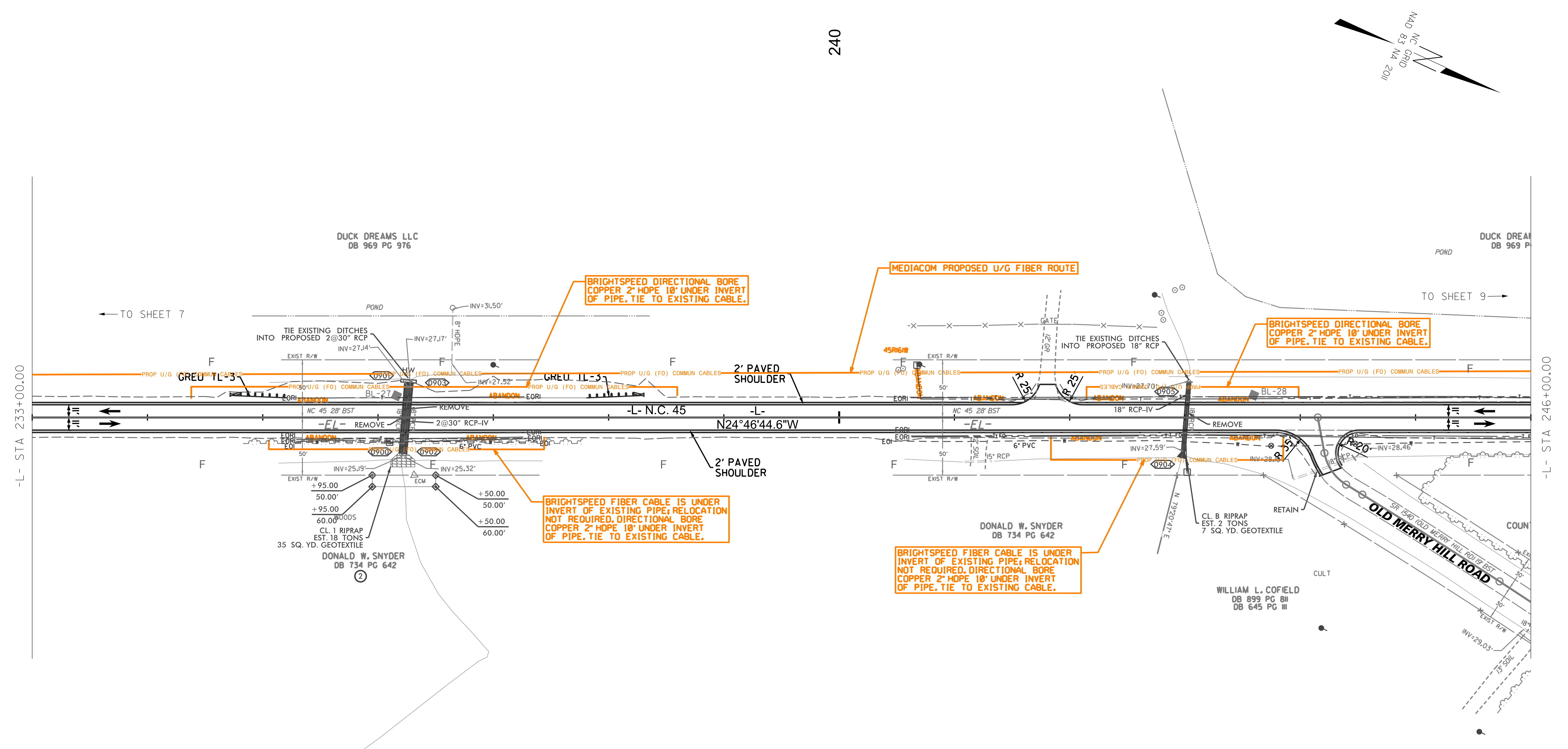
-L- SC 195+19.71

-L- TS 193+19.71

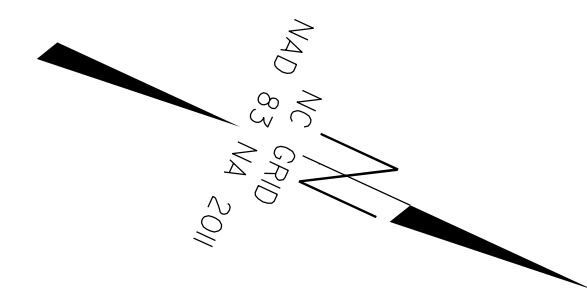
SPI DATA -L-  
 PIs 194+53.05  
 θs = 02°00'00.0"  
 Ls = 200  
 LT = 133.34  
 ST = 66.67

### UTILITIES BY OTHERS

NOTE:  
 ALL UTILITY WORK SHOWN ON THIS SHEET WILL BE DONE BY OTHERS. NO PAYMENT WILL BE MADE TO THE CONTRACTOR FOR UTILITY WORK SHOWN ON THIS SHEET.



240



← TO SHEET 7

TO SHEET 9 →

-L- STA 233+00.00

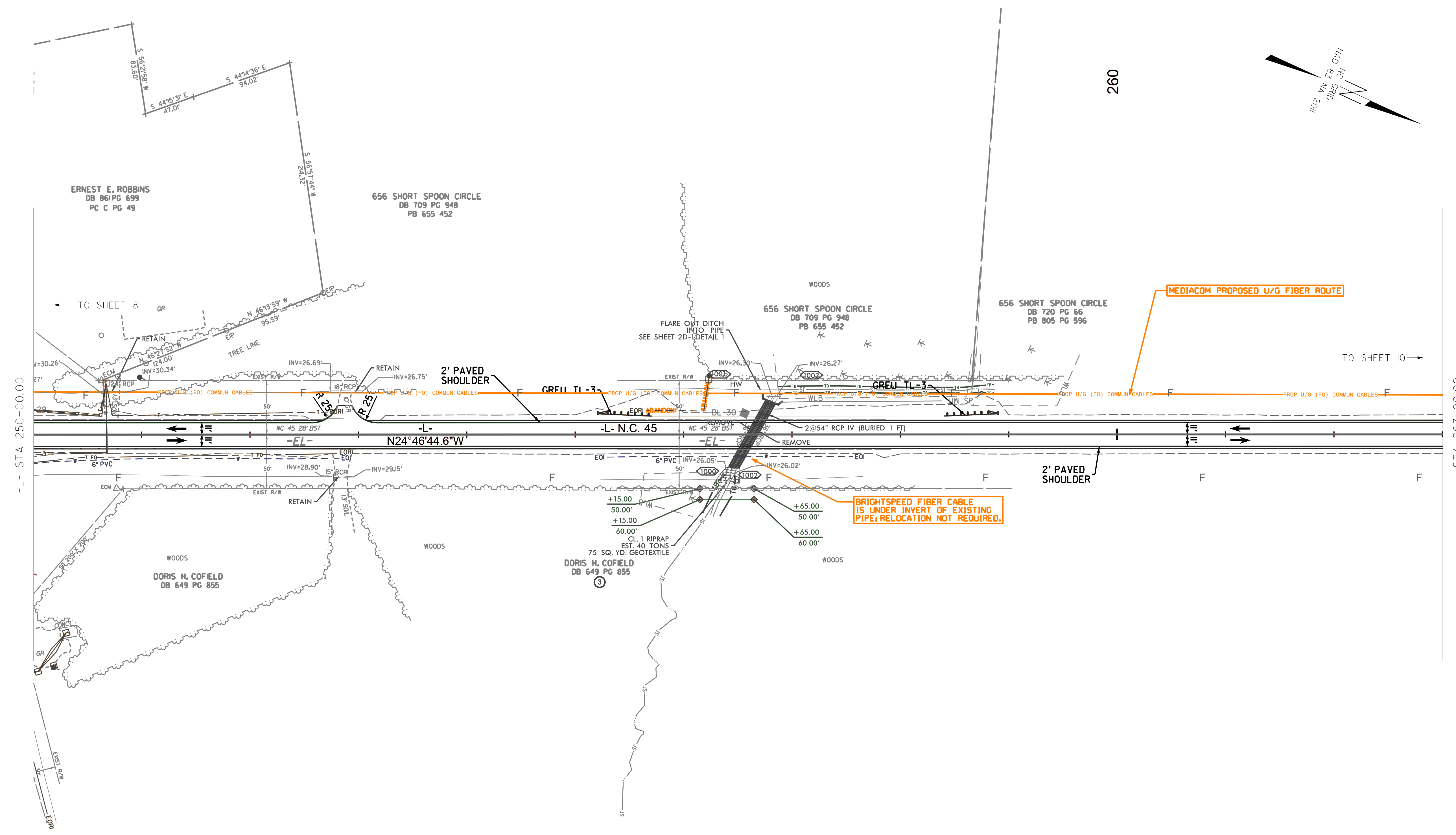
-L- STA 246+00.00

\$FILE\$.  
6/5/2024



### UTILITIES BY OTHERS

**NOTE:**  
 ALL UTILITY WORK SHOWN ON THIS SHEET WILL BE DONE BY OTHERS. NO PAYMENT WILL BE MADE TO THE CONTRACTOR FOR UTILITY WORK SHOWN ON THIS SHEET.

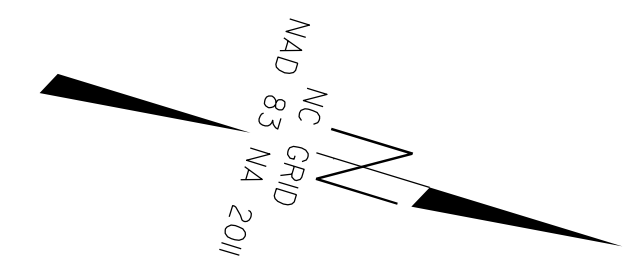


\$FILE\$.S  
6/5/2024

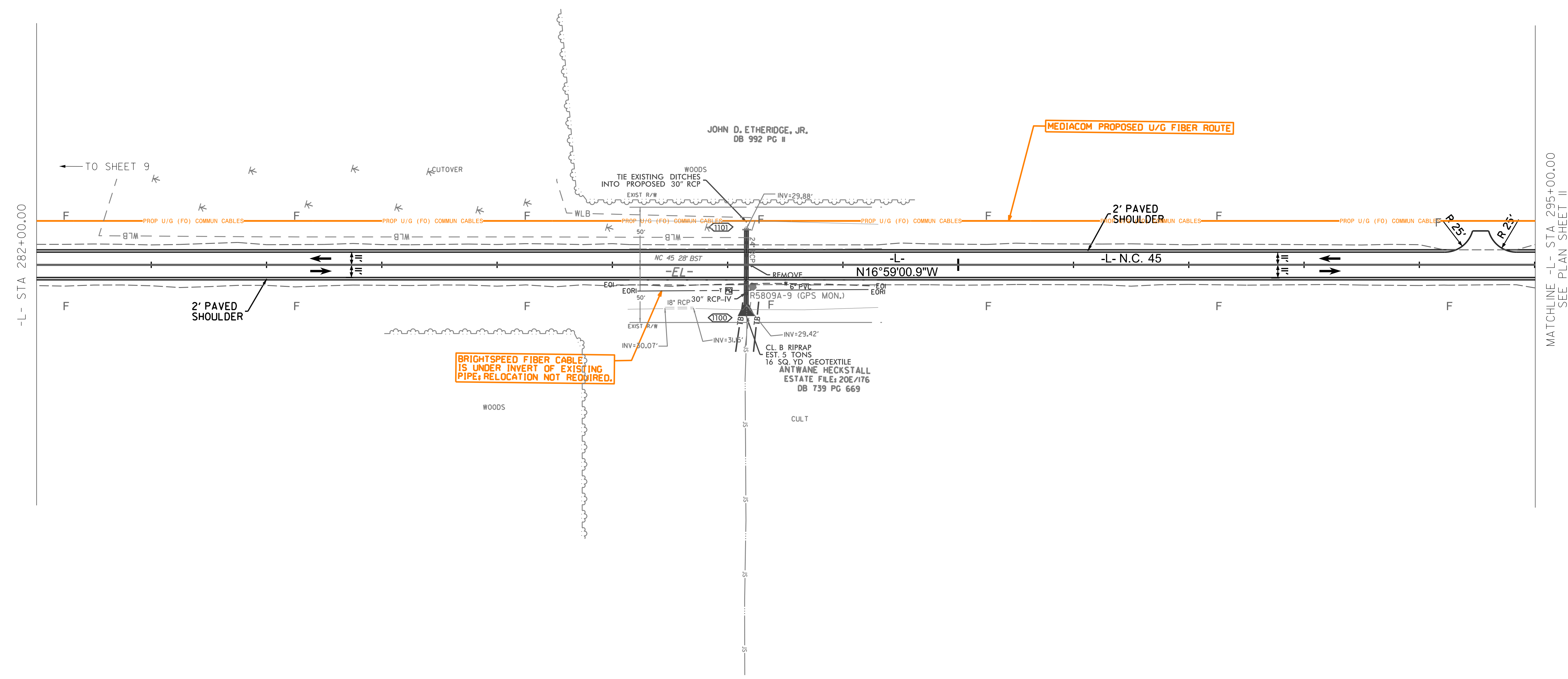
PROJECT REFERENCE NO.	SHEET NO.
R-5809A	U0-10
THIS SHEET CORRESPONDS TO RDY-II	

### UTILITIES BY OTHERS

NOTE:  
 ALL UTILITY WORK SHOWN ON THIS SHEET WILL BE DONE BY OTHERS. NO PAYMENT WILL BE MADE TO THE CONTRACTOR FOR UTILITY WORK SHOWN ON THIS SHEET.



290



-L- STA 282+00.00

MATCHLINE -L- STA 295+00.00  
 SEE PLAN SHEET II

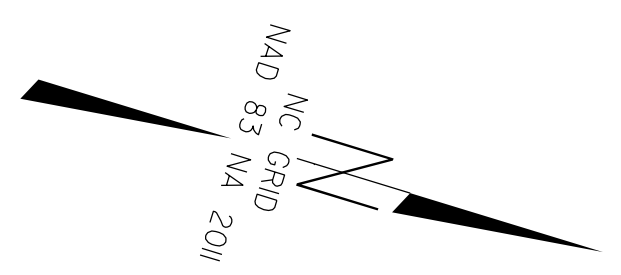
6/5/2024 \$FILE\$



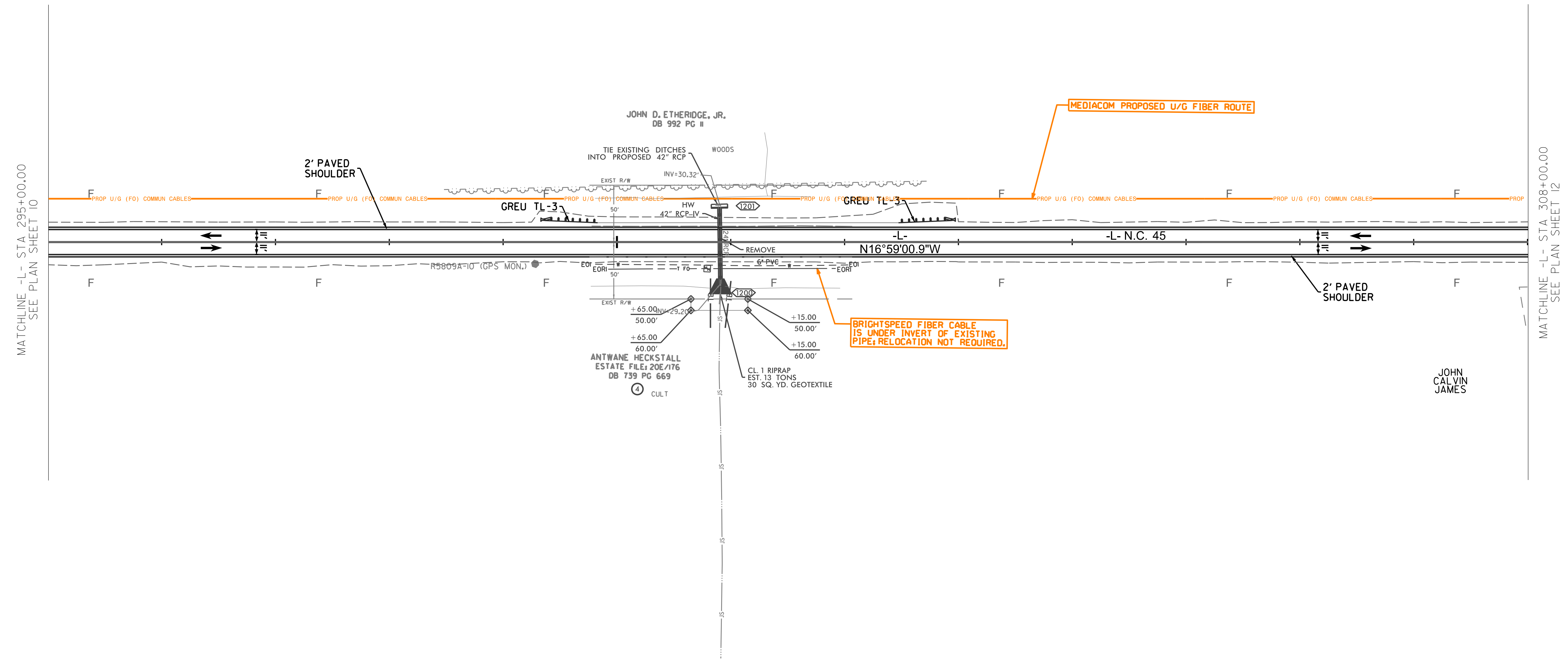
PROJECT REFERENCE NO.	SHEET NO.
R-5809A	U0-11
THIS SHEET CORRESPONDS TO RDY-12	

### UTILITIES BY OTHERS

**NOTE:**  
 ALL UTILITY WORK SHOWN ON THIS SHEET WILL BE DONE BY OTHERS. NO PAYMENT WILL BE MADE TO THE CONTRACTOR FOR UTILITY WORK SHOWN ON THIS SHEET.



300



MATCHLINE -L- STA 295+00.00  
SEE PLAN SHEET 10

MATCHLINE -L- STA 308+00.00  
SEE PLAN SHEET 12

JOHN D. ETHERIDGE, JR.  
DB 992 PG II

TIE EXISTING DITCHES INTO PROPOSED 42" RCP

EXIST R/W INV=30.32

HW 42" RCP-IV

REMOVE

6" PVC

50'

EXIST R/W

+65.00

+65.00

ANTWANE HECKSTALL ESTATE FILE: 20E/176 DB 739 PG 669

CL 1 RIPRAP EST. 13 TONS 30 SQ. YD. GEOTEXTILE

CULT

15'

15'

15'

15'

15'

15'

15'

15'

15'

MEDIACOM PROPOSED U/G FIBER ROUTE

BRIGHTSPEED FIBER CABLE IS UNDER INVERT OF EXISTING PIPE; RELOCATION NOT REQUIRED.

JOHN CALVIN JAMES

6/5/2024 \$FILE\$

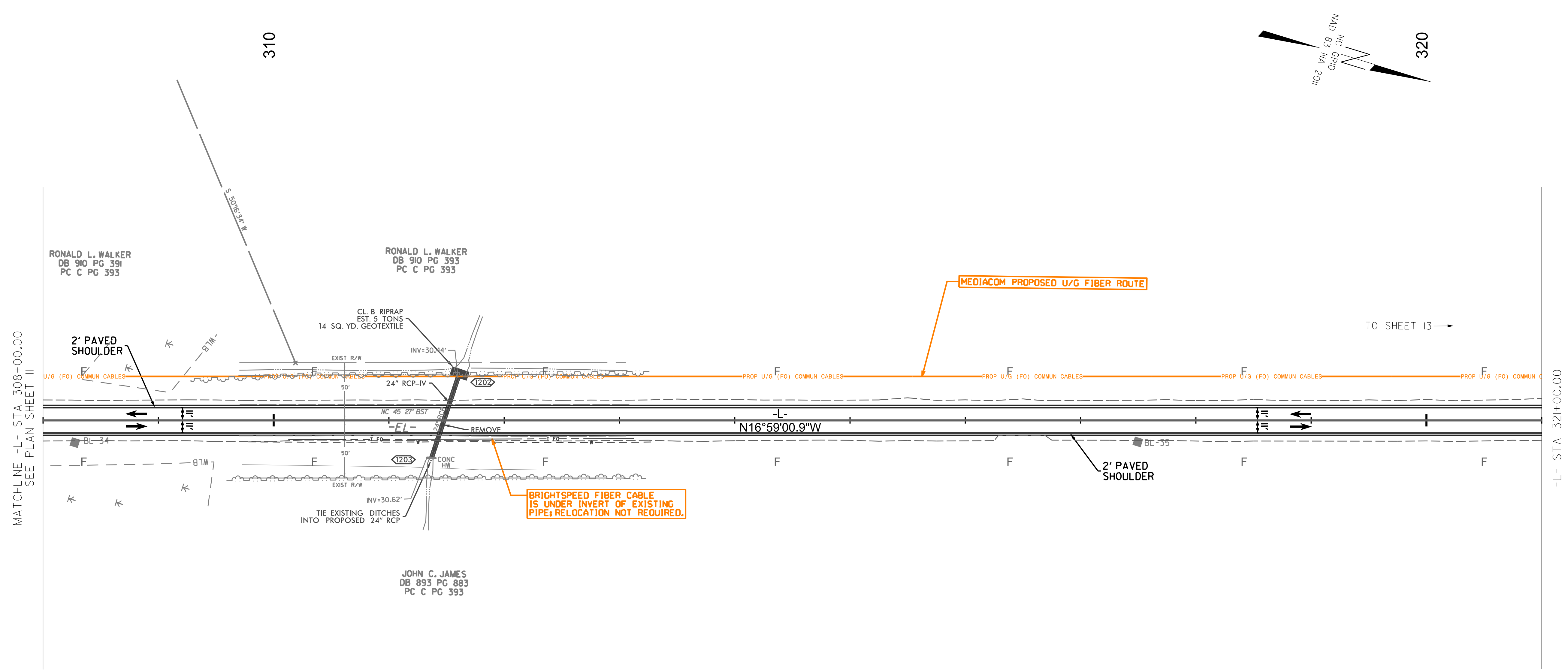




PROJECT REFERENCE NO.	SHEET NO.
R-5809A	U0-12
THIS SHEET CORRESPONDS TO RDY-12A	

### UTILITIES BY OTHERS

NOTE:  
 ALL UTILITY WORK SHOWN ON THIS SHEET WILL BE DONE BY OTHERS. NO PAYMENT WILL BE MADE TO THE CONTRACTOR FOR UTILITY WORK SHOWN ON THIS SHEET.

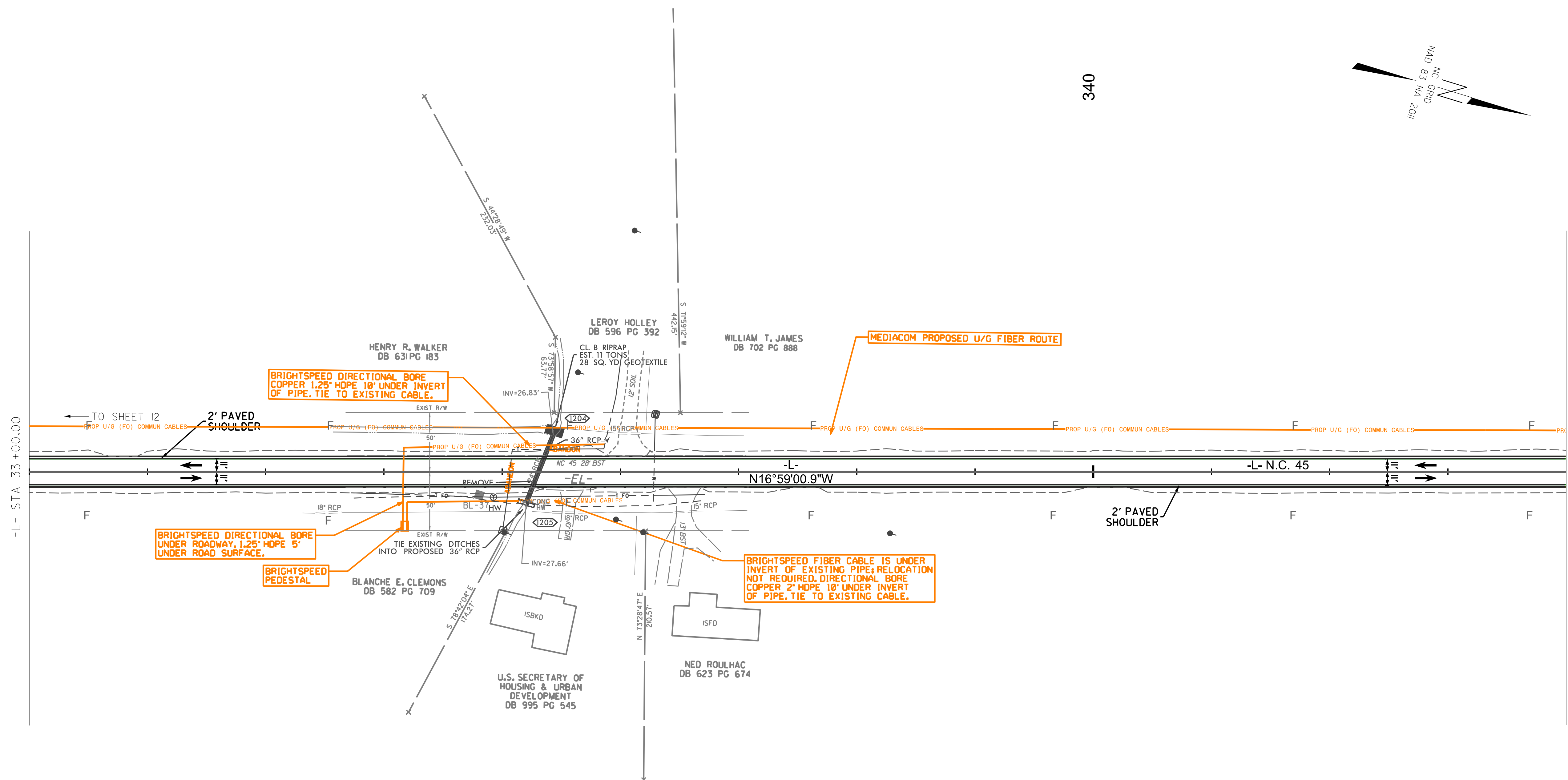
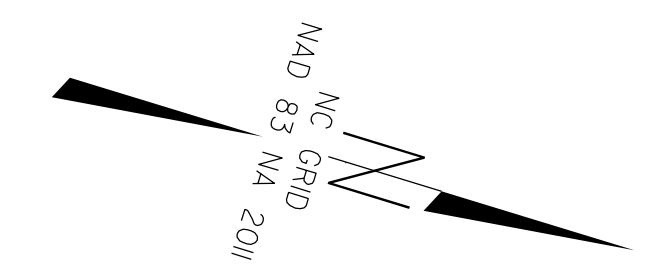


6/5/2024 \$FILE\$

PROJECT REFERENCE NO.	SHEET NO.
R-5809A	U0-13
THIS SHEET CORRESPONDS TO RDY-12B	

### UTILITIES BY OTHERS

NOTE:  
 ALL UTILITY WORK SHOWN ON THIS SHEET WILL BE DONE BY OTHERS. NO PAYMENT WILL BE MADE TO THE CONTRACTOR FOR UTILITY WORK SHOWN ON THIS SHEET.



-L- STA 331+00.00

MATCHLINE -L- STA 344+00.00  
 SEE PLAN SHEET 14

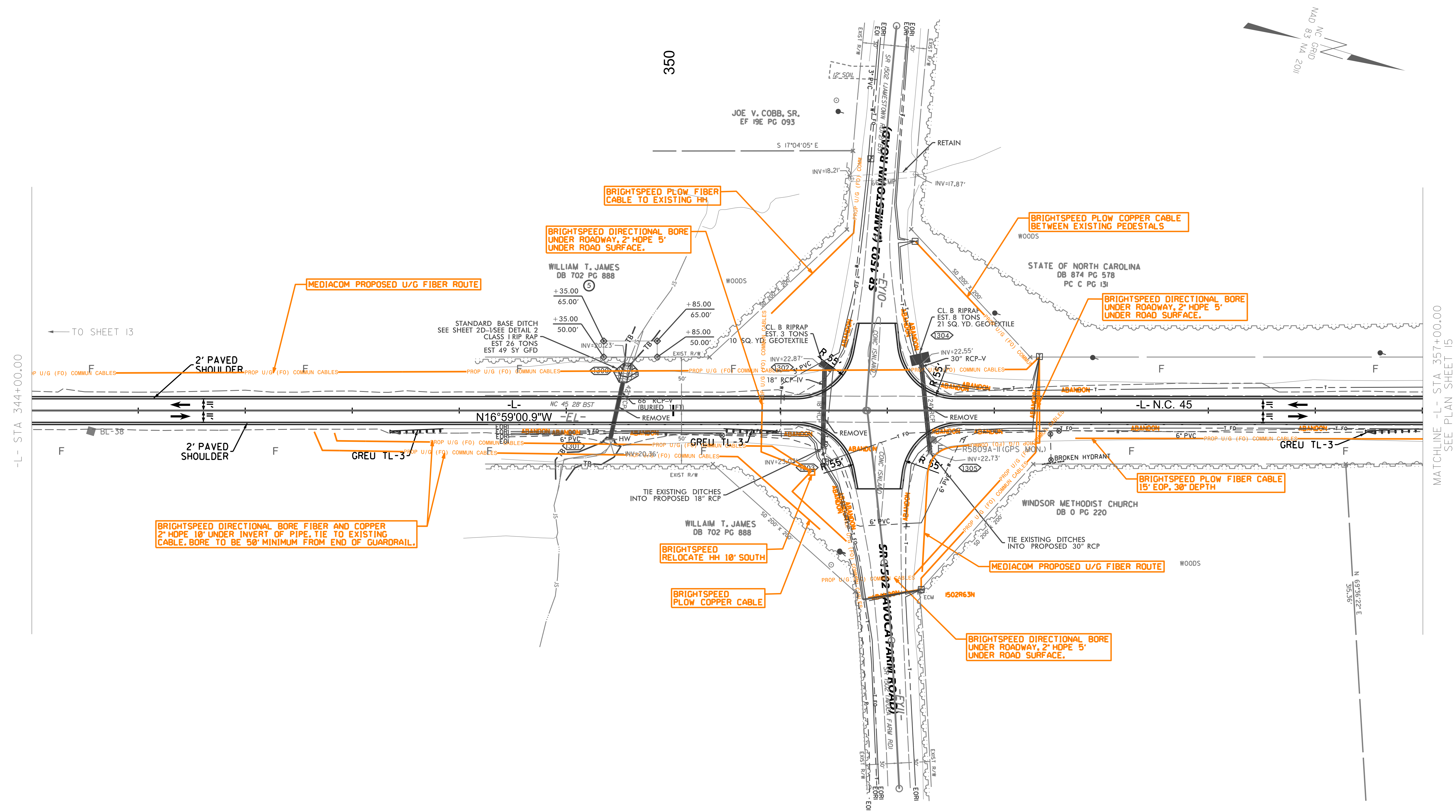
340

6/5/2024 \$FILE\$



### UTILITIES BY OTHERS

**NOTE:**  
 ALL UTILITY WORK SHOWN ON THIS SHEET WILL BE DONE BY OTHERS. NO PAYMENT WILL BE MADE TO THE CONTRACTOR FOR UTILITY WORK SHOWN ON THIS SHEET.

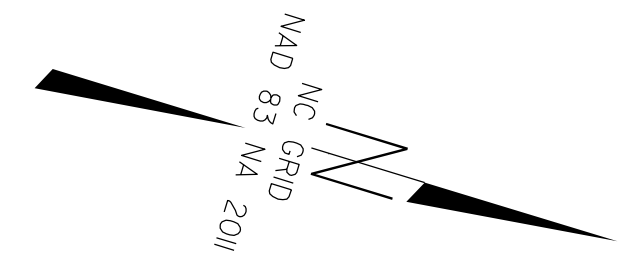


\$FILE.\$  
6/5/2024



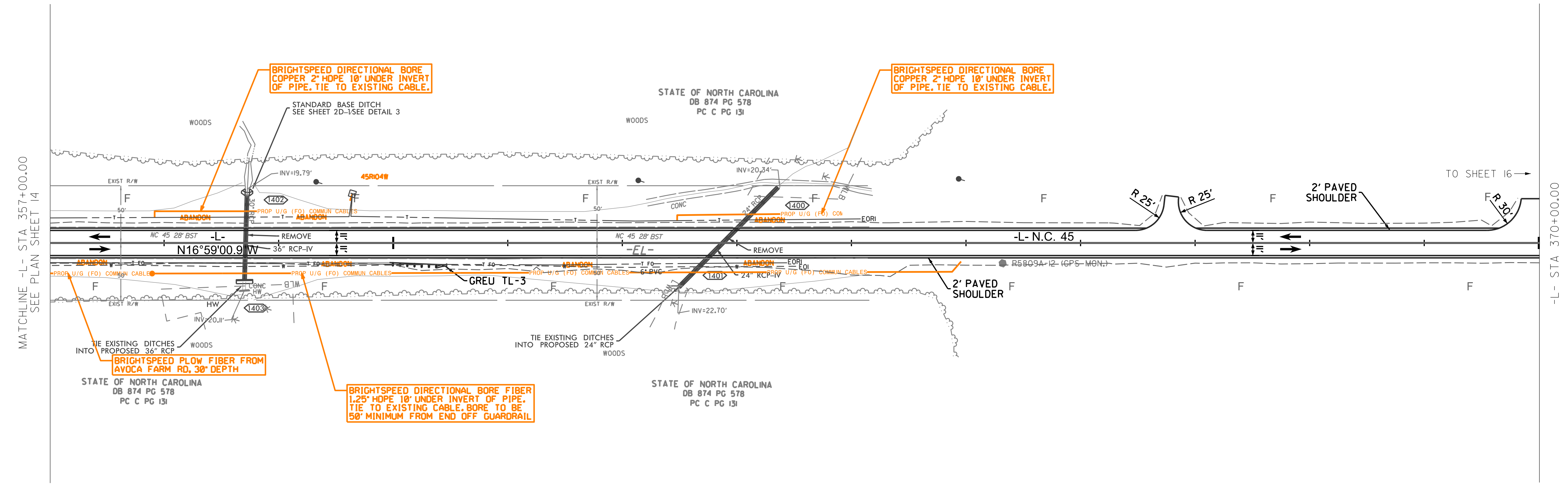
### UTILITIES BY OTHERS

NOTE:  
 ALL UTILITY WORK SHOWN ON THIS SHEET WILL BE DONE BY OTHERS. NO PAYMENT WILL BE MADE TO THE CONTRACTOR FOR UTILITY WORK SHOWN ON THIS SHEET.



360

370



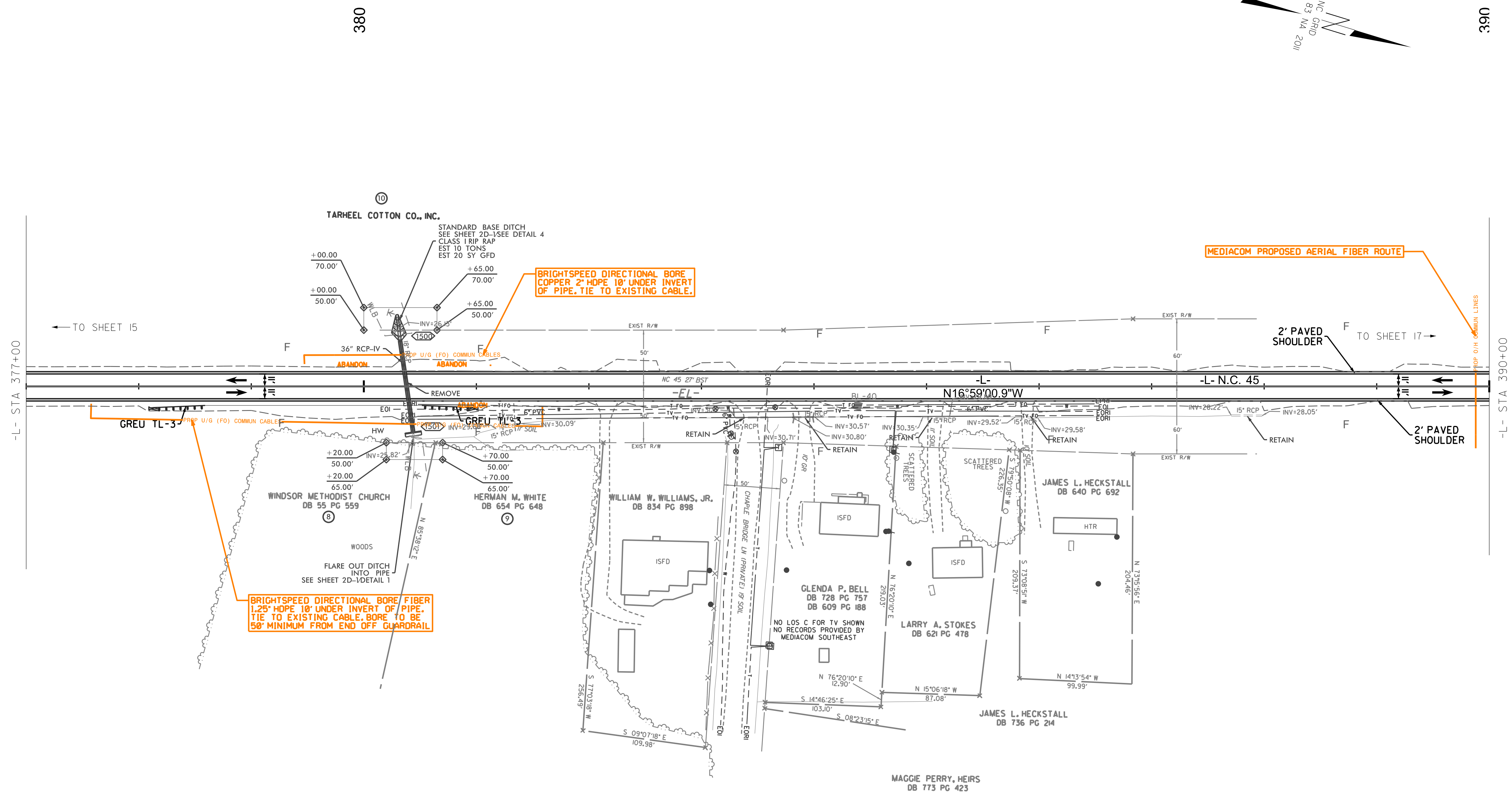
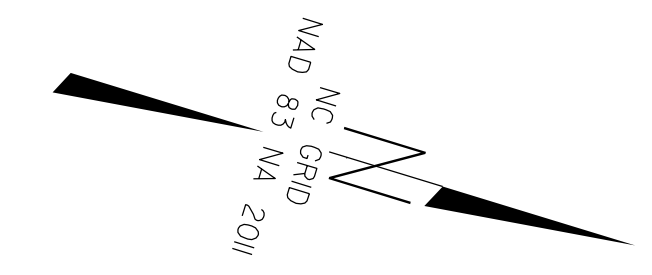
MATCHLINE -L- STA 357+00.00  
SEE PLAN SHEET 14

-L- STA 370+00.00  
TO SHEET 16 →

\$FILE\$  
6/5/2024

### UTILITIES BY OTHERS

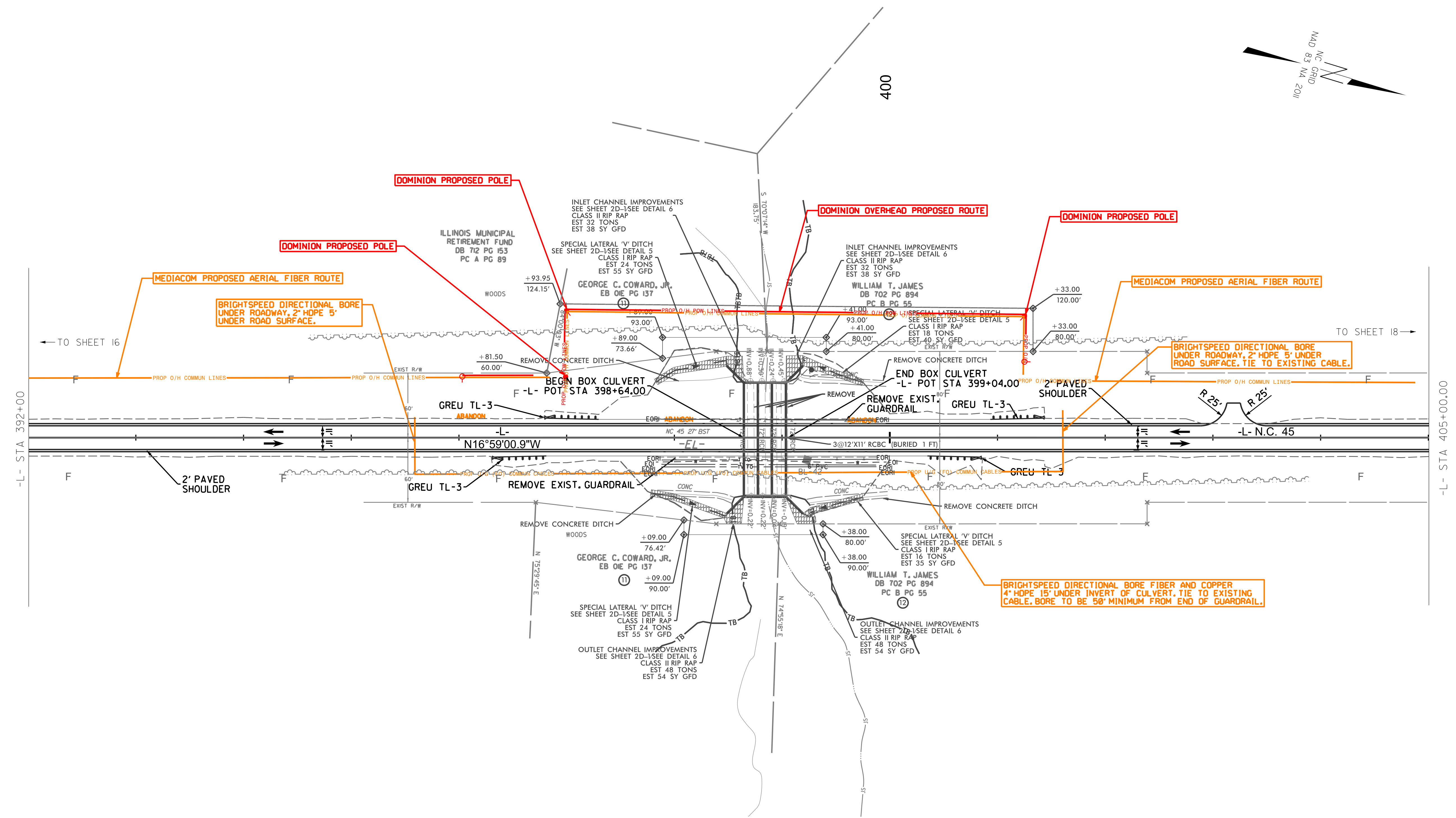
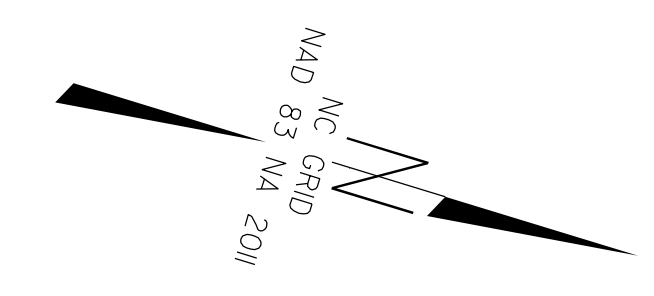
**NOTE:**  
 ALL UTILITY WORK SHOWN ON THIS SHEET WILL BE DONE BY OTHERS. NO PAYMENT WILL BE MADE TO THE CONTRACTOR FOR UTILITY WORK SHOWN ON THIS SHEET.



\$FILE:6/5/2024

### UTILITIES BY OTHERS

**NOTE:**  
 ALL UTILITY WORK SHOWN ON THIS SHEET WILL BE DONE BY OTHERS. NO PAYMENT WILL BE MADE TO THE CONTRACTOR FOR UTILITY WORK SHOWN ON THIS SHEET.

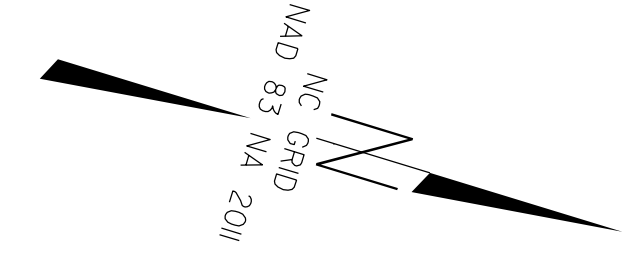


\$FILE.\$  
6/5/2024

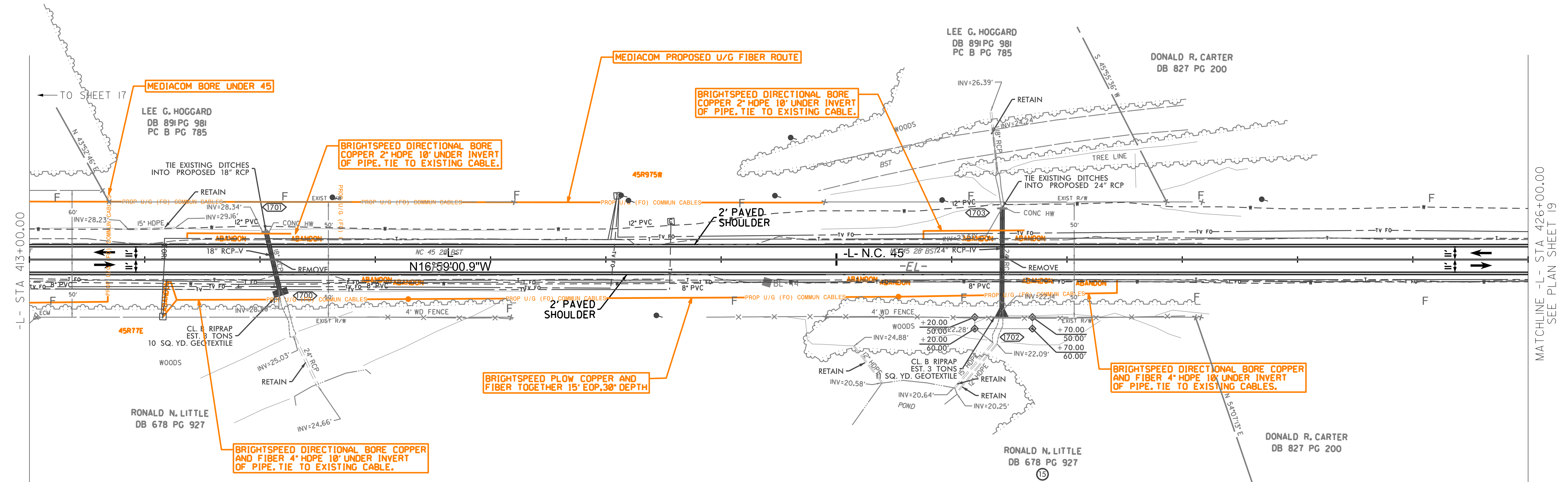


### UTILITIES BY OTHERS

**NOTE:**  
 ALL UTILITY WORK SHOWN ON THIS SHEET WILL BE DONE BY OTHERS. NO PAYMENT WILL BE MADE TO THE CONTRACTOR FOR UTILITY WORK SHOWN ON THIS SHEET.



420



-L- STA 413+00.00

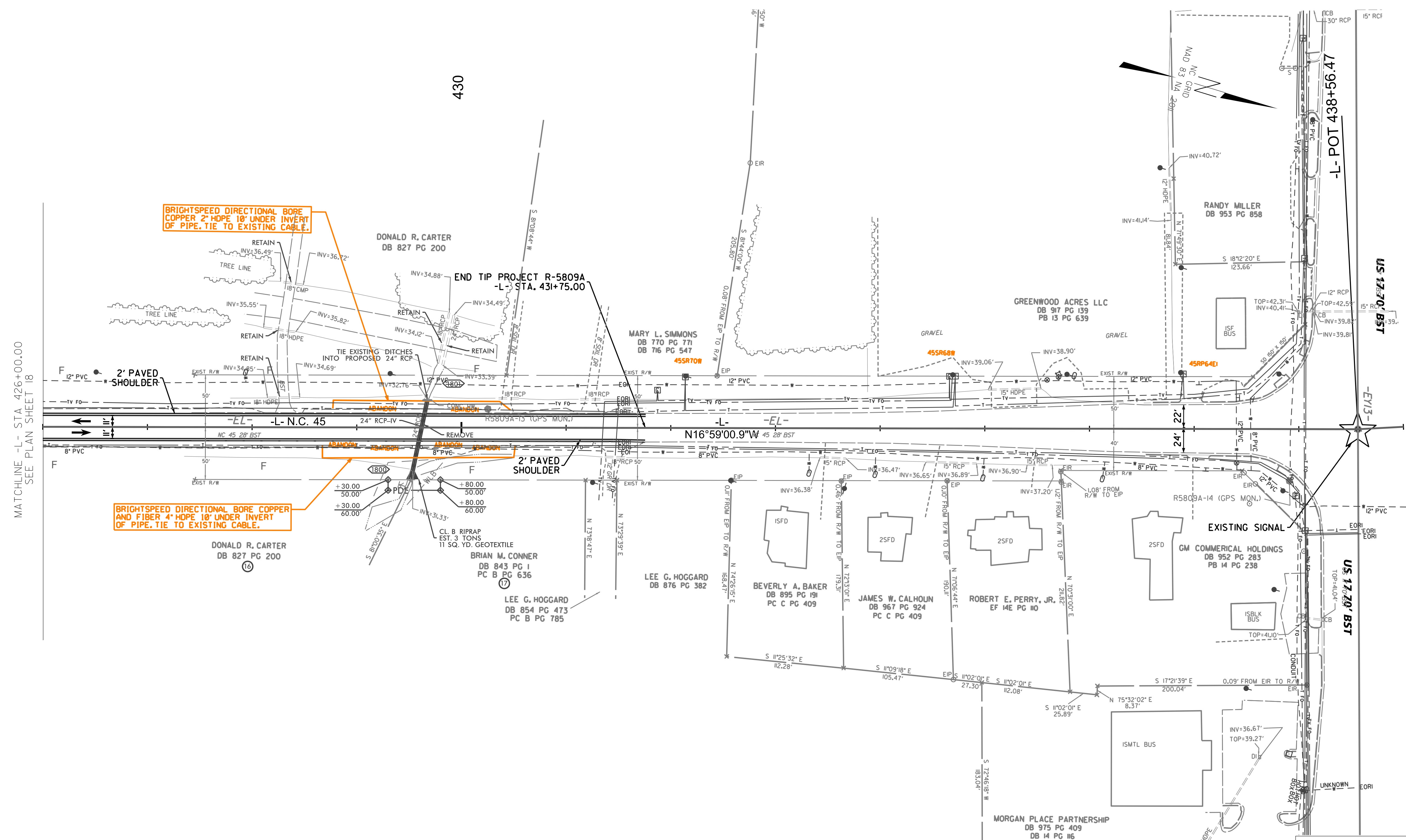
MATCHLINE -L- STA 426+00.00  
SEE PLAN SHEET 19

\$FILE\$.  
6/5/2024



### UTILITIES BY OTHERS

**NOTE:**  
 ALL UTILITY WORK SHOWN ON THIS SHEET WILL BE DONE BY OTHERS. NO PAYMENT WILL BE MADE TO THE CONTRACTOR FOR UTILITY WORK SHOWN ON THIS SHEET.



MATCHLINE -L- STA 426+00.00  
SEE PLAN SHEET 18

BRIGHTSPEED DIRECTIONAL BORE  
 COPPER 2" HDPE 10' UNDER INVERT  
 OF PIPE. TIE TO EXISTING CABLE.

BRIGHTSPEED DIRECTIONAL BORE  
 COPPER AND FIBER 4" HDPE 10' UNDER INVERT  
 OF PIPE. TIE TO EXISTING CABLE.

