



STATE OF NORTH CAROLINA  
DEPARTMENT OF TRANSPORTATION

ROY COOPER  
GOVERNOR

JAMES H. TROGDON, III  
SECRETARY

May 3, 2018

MEMORANDUM TO: John S Abel Jr.  
Division Project Engineer, Division 1

FROM: Dennis G. Li, Ph.D., LG  
GeoEnvironmental Project Manager  
GeoEnvironmental Section  
Geotechnical Engineering Unit

DocuSigned by:  
*Dennis Li*  
3288528EC798426...  
5/3/2018

TIP NO: R-5808  
WBS: 46972.1.1  
COUNTY: GATES  
DIVISION: 1  
DESCRIPTION: TO MODERNIZE US ROUTE 158 BY WIDENING THE EXISTING LANES AND IMPROVING THE SHOULDERS FROM SR 1002 (ACORN HILL RD) INTERSECTION TO THE PASQUOTANK COUNTY LINE IN THE WEST. (4 MILES).

SUBJECT: **GeoEnvironmental Planning Report**

The GeoEnvironmental Section of the Geotechnical Engineering Unit performed a Phase I field investigation on April 18, 2018 for the above referenced project to identify geoenvironmental sites of concern. The purpose of this report is to document sites of concern within the project study area that are or may be contaminated. These sites of concern should be included in the environmental planning document in an effort to assist the project stakeholders in reducing or avoiding impacts to these sites. Sites of concern may include, but are not limited to, underground storage tank (UST) sites, dry cleaning facilities, hazardous waste sites, regulated landfills and unregulated dumpsites.

**Findings**

No Sites of concern were identified within the proposed study area as shown in the figure below. We don't anticipate any monetary or scheduling impacts resulting from geoenvironmental sites of concern.

Please note that discovery of sites not recorded by regulatory agencies and not reasonably discernible during the project reconnaissance may occur. The GeoEnvironmental Section should be notified immediately after discovery of such sites so their potential impact(s) may be assessed.

If there are questions regarding the geoenvironmental issues, please contact me, at (919) 707-6857.

Mailing Address:  
NC DEPARTMENT OF TRANSPORTATION  
GEOTECHNICAL ENGINEERING UNIT  
1589 MAIL SERVICE CENTER  
RALEIGH NC 27699-1589

Telephone: 919-707-6850  
Fax: 919-250-4237  
Customer Service: 1-877-368-4968

Website: [www.ncdot.gov](http://www.ncdot.gov)

Location:  
CENTURY CENTER COMPLEX  
ENTRANCE B-2  
1020 BIRCH RIDGE DRIVE  
RALEIGH NC

cc:

John Pilipchuk, LG, PE, State Geotechnical Engineer

Stephen R. Morgan, PE, State Hydraulics Engineer

Andrew McDaniel, PE, Stormwater NPDES Permit Program - Engineering Supervisor

Brian Hanks, PE, State Structures Engineer

Dale Burton PE, PLS, State Locations and Surveys Engineer

Carl Barclay, PE, State Utilities Manager

Jerry Jennings, PE, Division 1 (Construction) Engineer

Roy "Chris" Sutton, Division 1 Right of Way Agent

Chris Kreider, PE, Geotechnical Regional Manager

Dean Argenbright, LG, Regional Geological Engineer

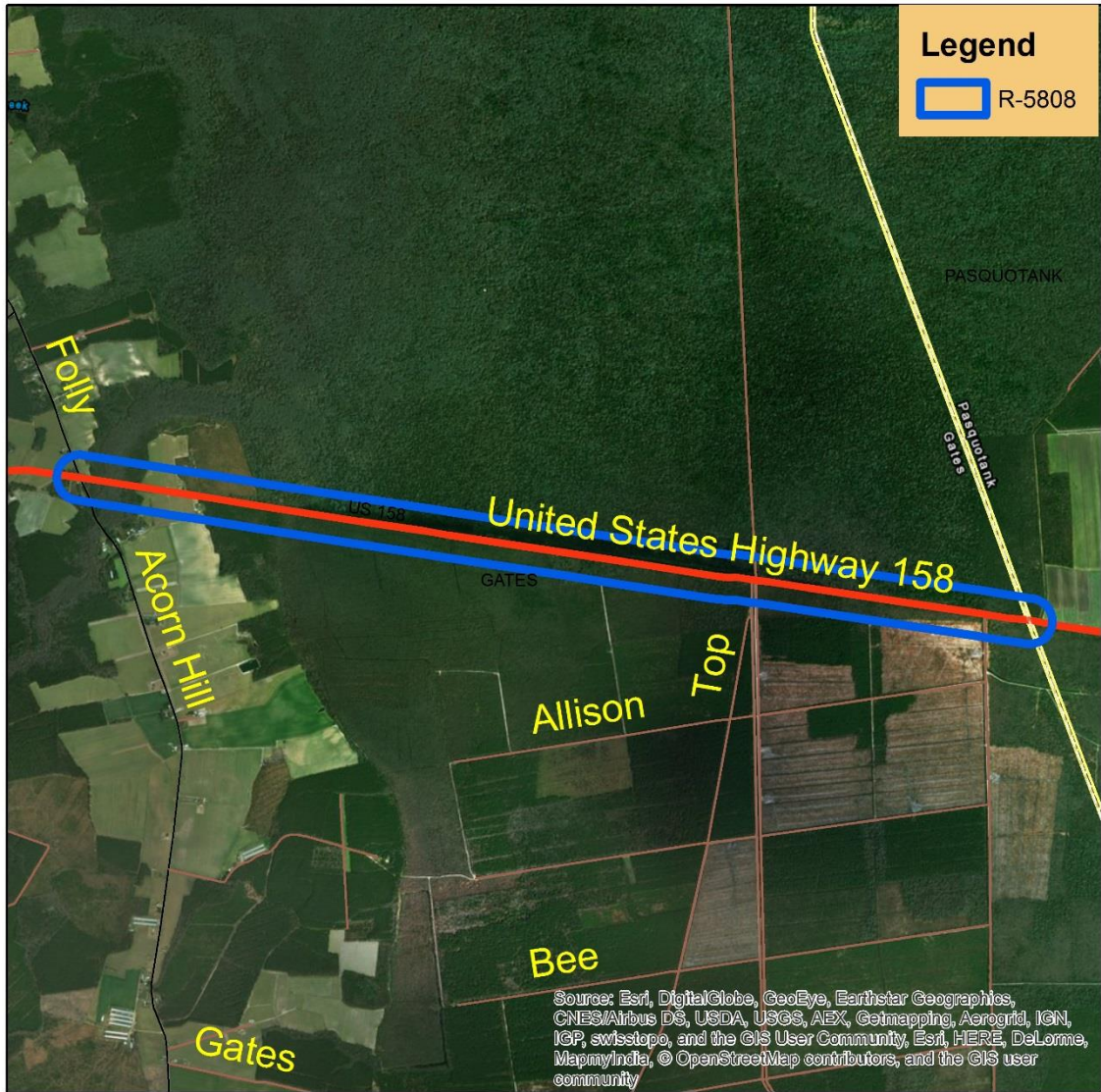
Steve Grimes, ROW Unit, Negotiations, State Negotiator

[row-notify@ncdot.gov](mailto:row-notify@ncdot.gov)

[roadwaydesign@ncdot.gov](mailto:roadwaydesign@ncdot.gov)


File

Appendix A  
Location of GeoEnvironmental Sites of Concern



Project 46972.1.1 (TIP # R-5808)  
TO MODERNIZE US ROUTE 158 BY WIDENING  
THE EXISTING LANES AND IMPROVING THE  
SHOULDERS FROM SR 1002 (ACORN HILL RD)  
INTERSECTION TO THE PASQUOTANK  
COUNTY LINE IN THE WEST (4 MILES).

4,100 2,050 0 4,100 Feet

 NC Department of Transportation  
Geotechnical Engineering Unit  
GeoEnvironmental Section

