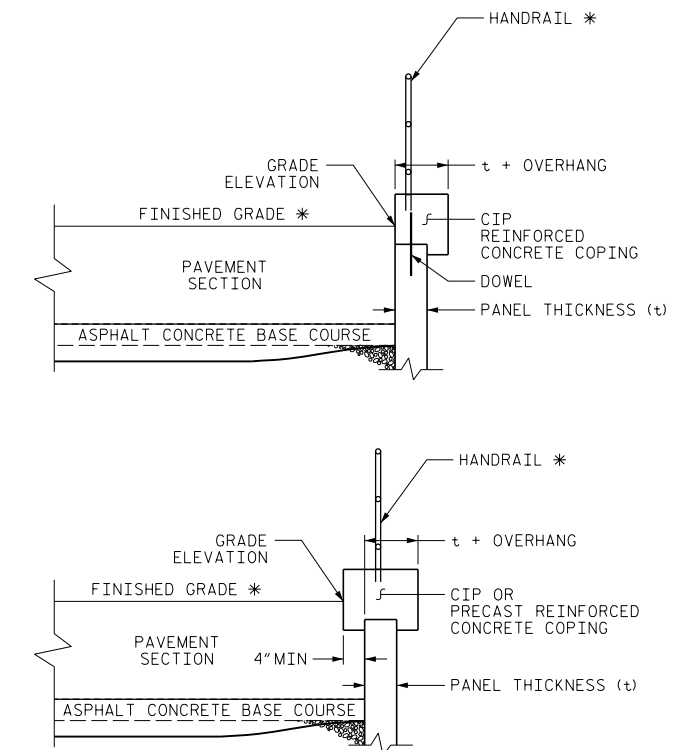
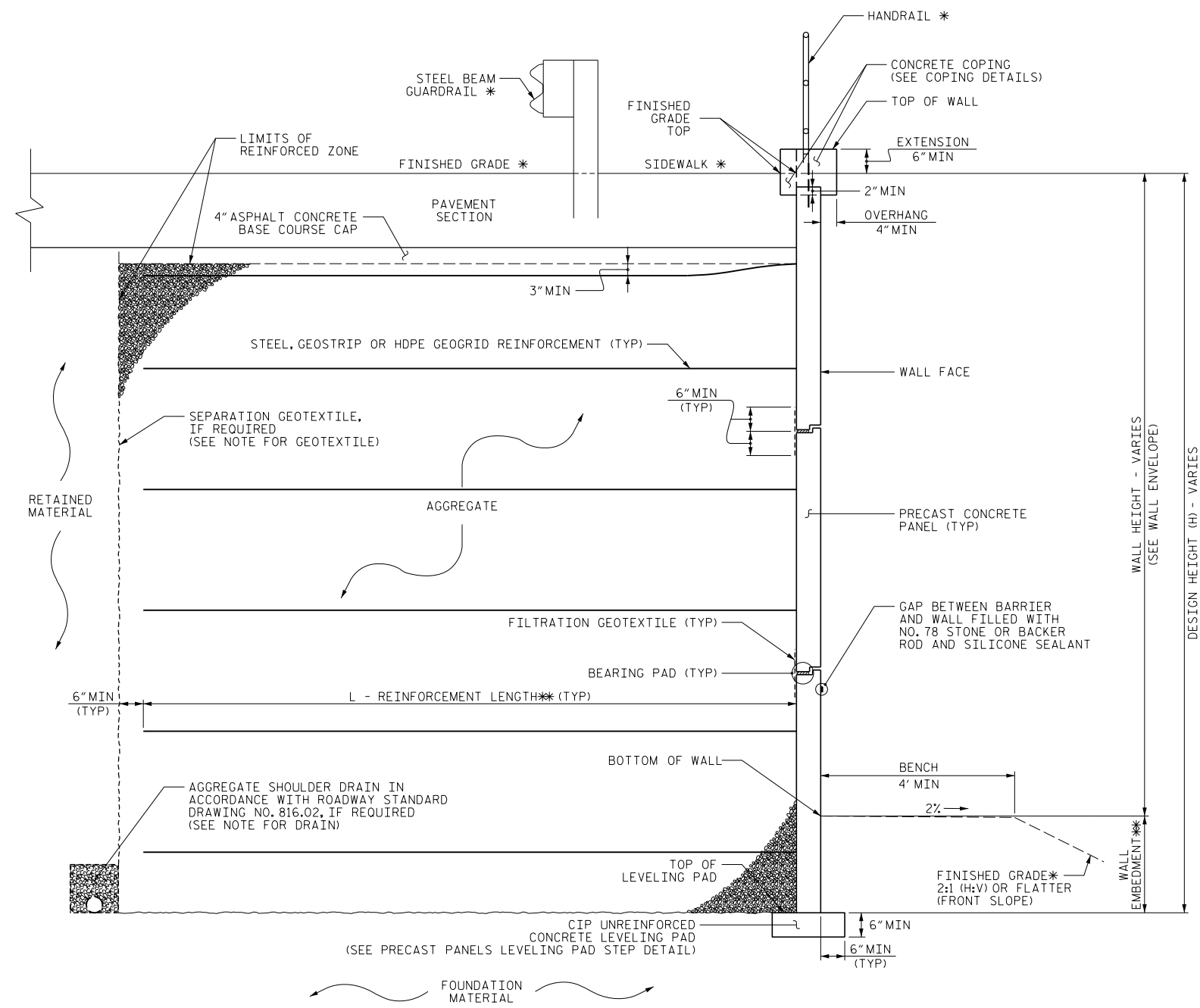


ENGINEER

9/30/2024

DOCUMENT NOT CONSIDERED FINAL  
UNLESS ALL SIGNATURES COMPLETED



**COPING DETAILS**

AT THE CONTRACTOR'S OPTION, CONNECT COPING TO PANELS WITH DOWELS OR EXTEND COPING DOWN BACK OF PANELS.  
\* SEE ROADWAY PLANS FOR FINISHED GRADE DETAILS.

**MSE WALL WITH PRECAST PANELS - TYPICAL SECTION**

\* SEE ROADWAY PLANS FOR FINISHED GRADE, SIDEWALK, GUARDRAIL AND HANDRAILS DETAILS.  
\*\* SEE MSE RETAINING WALLS PROVISION AND IF APPLICABLE, MSE WALL NOTES FOR WALL EMBEDMENT AND REINFORCEMENT LENGTH REQUIREMENTS.

PROJECT NO.: U-4015A  
 GUILFORD COUNTY  
 STATION: RW1: -L- 27+25.00 TO -L- 29+50.00  
 RW2: -L- 44+00.00 TO -L- 45+00.00  
 RW3: -L- 48+00.00 TO -L- 53+00.00  
 SHEET 4 OF 5 WALL ID RW-1 TO 3

PREPARED BY: S. KABRA	DATE: 03/25/22
REVIEWED BY: M. METRY	DATE: 03/28/22

**RK&K**  
 P: (919) 878-9560  
 8601 Six Forks Road, Forum 1, Suite 700  
 Raleigh, North Carolina 27615-3960  
 NC License No. F-0112

Engineers | Construction Managers | Planners | Scientists  
 www.rkk.com

Responsive People | Creative Solutions

NORTH CAROLINA  
 DEPARTMENT OF TRANSPORTATION  
 DIVISION OF HIGHWAYS

**GEOTECHNICAL  
 ENGINEERING UNIT**

**MSE RETAINING WALL  
 NO. 1 THROUGH NO. 3  
 DETAILS**

REVISIONS						SHEET NO.
NO.	BY	DATE	NO.	BY	DATE	
1	S. KABRA	12/20/21	3			W-4
2	M. METRY	02/13/23	4			