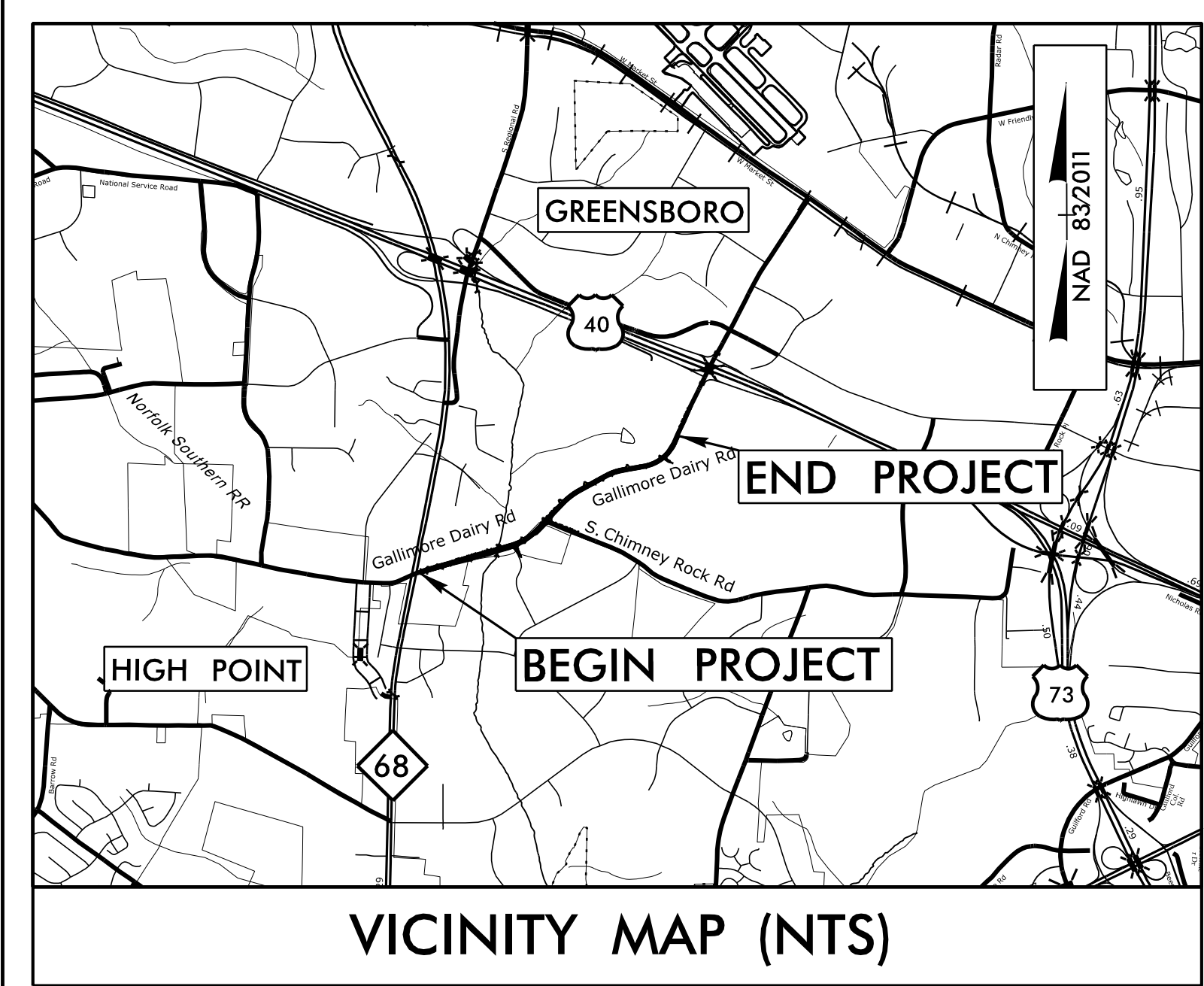
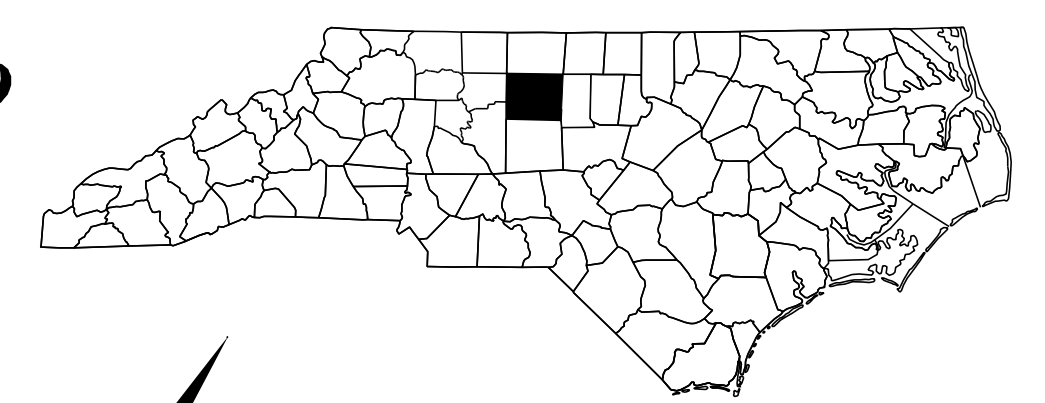


STATE OF NORTH CAROLINA  
DIVISION OF HIGHWAYS

# GUILFORD COUNTY

**LOCATION: SR 1556 (GALLIMORE DAIRY RD.) FROM NC 68 (LYNWOOD SMITH EXPY.) TO AIRPARK RD. IN GREENSBORO**

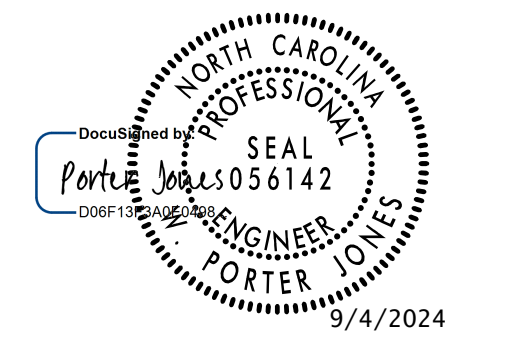
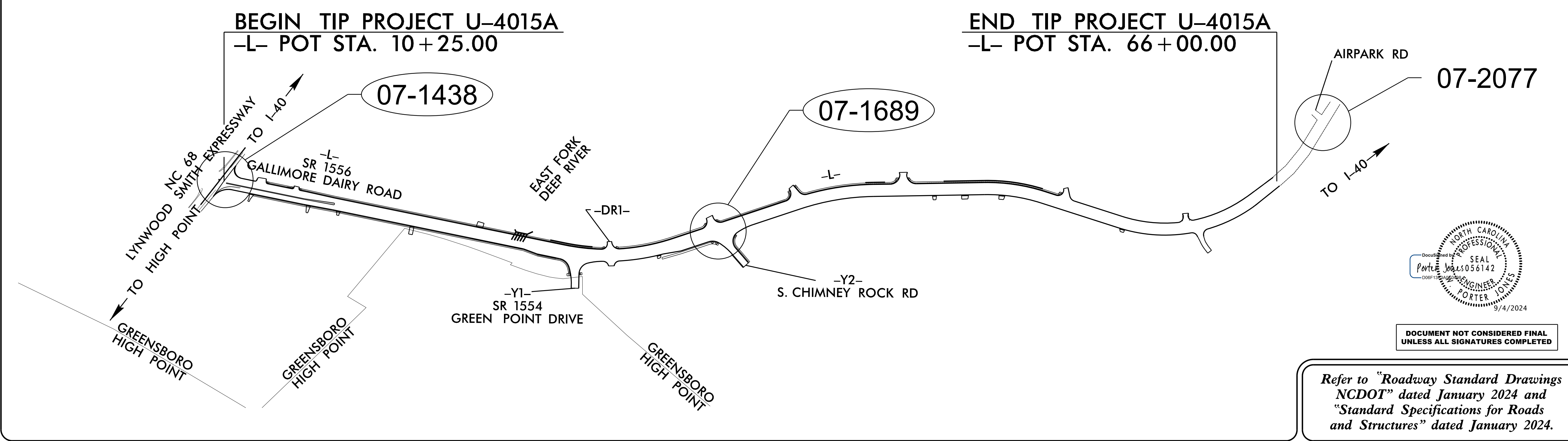
**TYPE OF WORK: TRAFFIC SIGNALS AND SIGNAL COMMUNICATIONS**



VICINITY MAP (NTS)

**TIP PROJECT: U-4015A**

**CONTRACT: C204821**



DOCUMENT NOT CONSIDERED FINAL  
UNLESS ALL SIGNATURES COMPLETED

Refer to "Roadway Standard Drawings NCDOT" dated January 2024 and "Standard Specifications for Roads and Structures" dated January 2024.

Sheet #	Reference #	Index of Plans	Location/Description
Sig. 1.0	-----	Title Sheet	
Sig. 2.0-4.3	07-1438	NC 68 at SR 1556 (Gallimore Dairy Rd.)	
Sig. 5.0-9.4	07-1689	SR 1556 at SR 1554 (Chimney Rock Rd.)	
Sig. M1A-M9	N/A	Standard Drawings for Metal Poles	
SCP 1-9	N/A	Signal Communications Plans	

**TRANSPORTATION SYSTEMS  
MANAGEMENT & OPERATIONS UNIT**

Contacts:

Robert J. Ziemba, P.E. - Central Region Signals Engineer  
D. Todd Joyce, P.E. - Signal Equipment Design Engineer  
Gregory A. Green - Signal Communications Project Engineer  
Heidi T. Berggren, E.I. - Signal Communications Project Design Engineer

Prepared for the Office of:  
DIVISION OF HIGHWAYS  
TRANSPORTATION MOBILITY & SAFETY DIVISION

750 N. Greenfield Parkway, Garner, NC 27529