

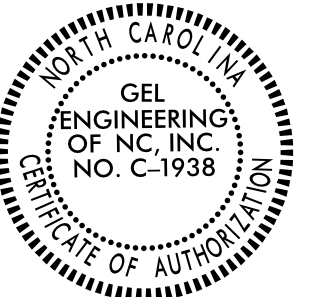
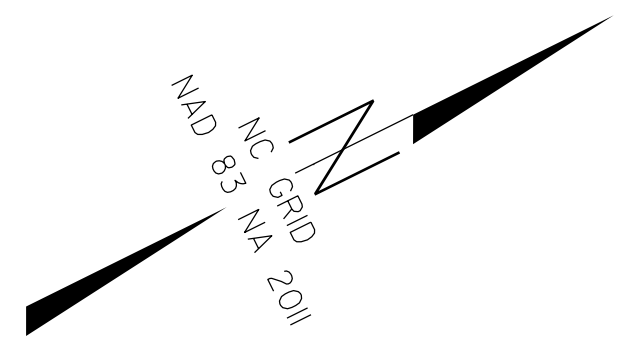


REVISIONS

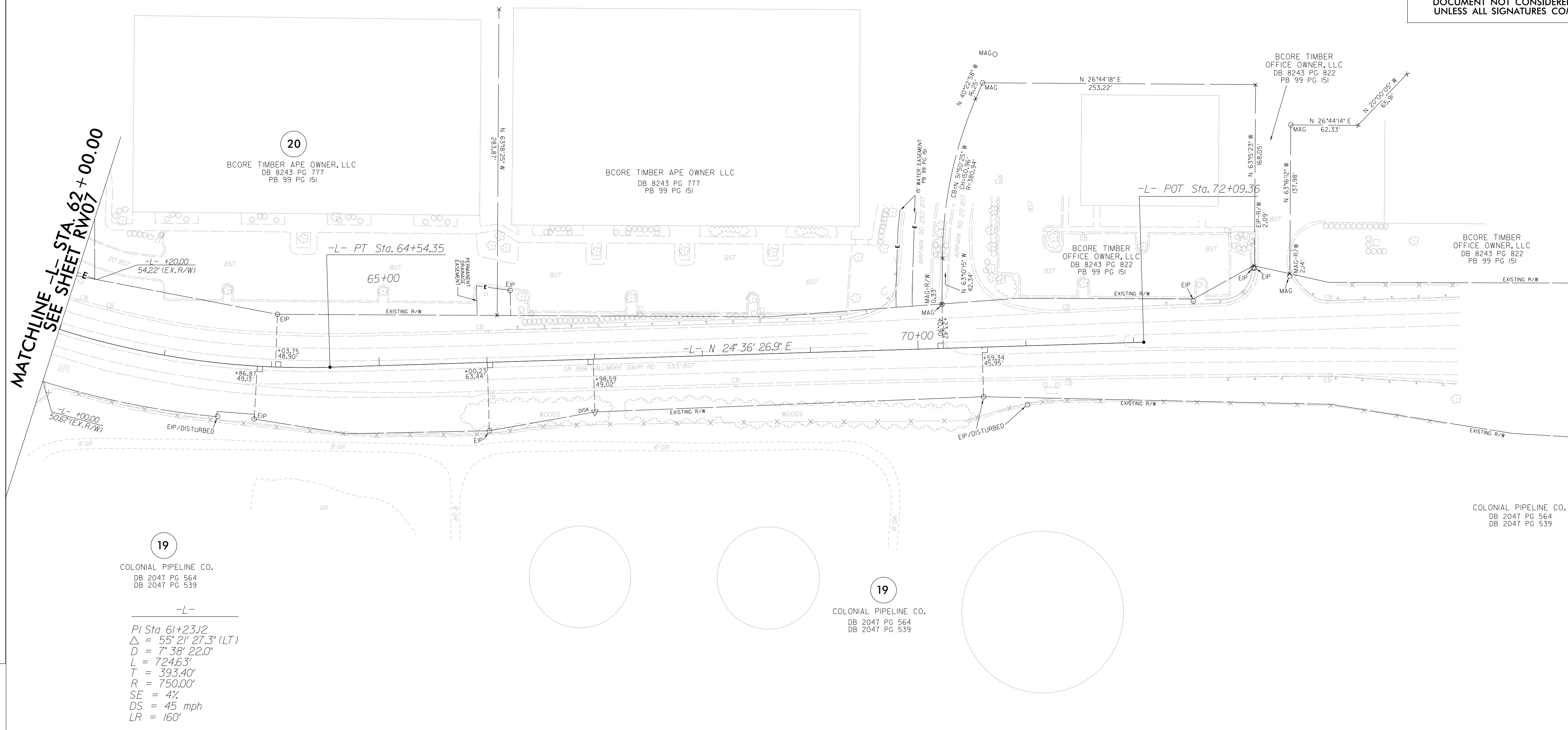
PROJECT REFERENCE NO.	SHEET NO.
U-4015A	RW08
Location and Surveys	
 GEL SOLUTIONS <small>an Affiliate of THE GEL GROUP, INC.</small> 111 CREEK RIDGE ROAD SUITE C GREENSBORO, NC 27406 (336) 516-9840 WWW.GEL-SOLUTIONS.COM	
PROJECT SURVEYOR	
 PARKS H. ICENHOUR, JR. SEAL L-3996	 GEL ENGINEERING OF NC, INC. NO. C-1938 CERTIFICATE OF AUTHORITY
DOCUMENT NOT CONSIDERED FINAL UNLESS ALL SIGNATURES COMPLETED	



I, Parks H Icenhour Jr., certify that the right of way and permanent easement monumentation for this project shown herein was completed under my direct and responsible charge from an actual survey made under my supervision; that all horizontal closures had a minimum ratio of precision of 1:10,000 (Class A). Field work was performed from 7/06/2021 to 8/29/2022, and all coordinates are based on NAD83/2011; That this survey was performed to meet the requirements of 21NCAC 56.1600 as applicable.

This 18th day of May, 2023.

Professional Land Surveyor L-3996



19
 COLONIAL PIPELINE CO.
 DB 2047 PG 564
 DB 2047 PG 539

-L-

PI Sta 61+23.12
 $\Delta = 55' 21'' 27.3'' (LT)$
 $D = 7' 38'' 22.0''$
 $L = 724.63'$
 $T = 393.40'$
 $R = 750.00'$
 $SE = 4\%$
 $DS = 45 \text{ mph}$
 $LR = 160'$

19
 COLONIAL PIPELINE CO.
 DB 2047 PG 564
 DB 2047 PG 539

NOTES:

1. IF FURTHER INFORMATION REGARDING PROJECT CONTROL IS NEEDED PLEASE CONTACT THE LOCATION AND SURVEYS UNIT.
2. PROJECT CONTROL WAS ESTABLISHED USING GNSS, THE GLOBAL NAVIGATION SATELLITE SYSTEM.
3. RIGHT OF WAY MONUMENTATION ESTABLISHED 7/06/2021 TO 8/29/2022