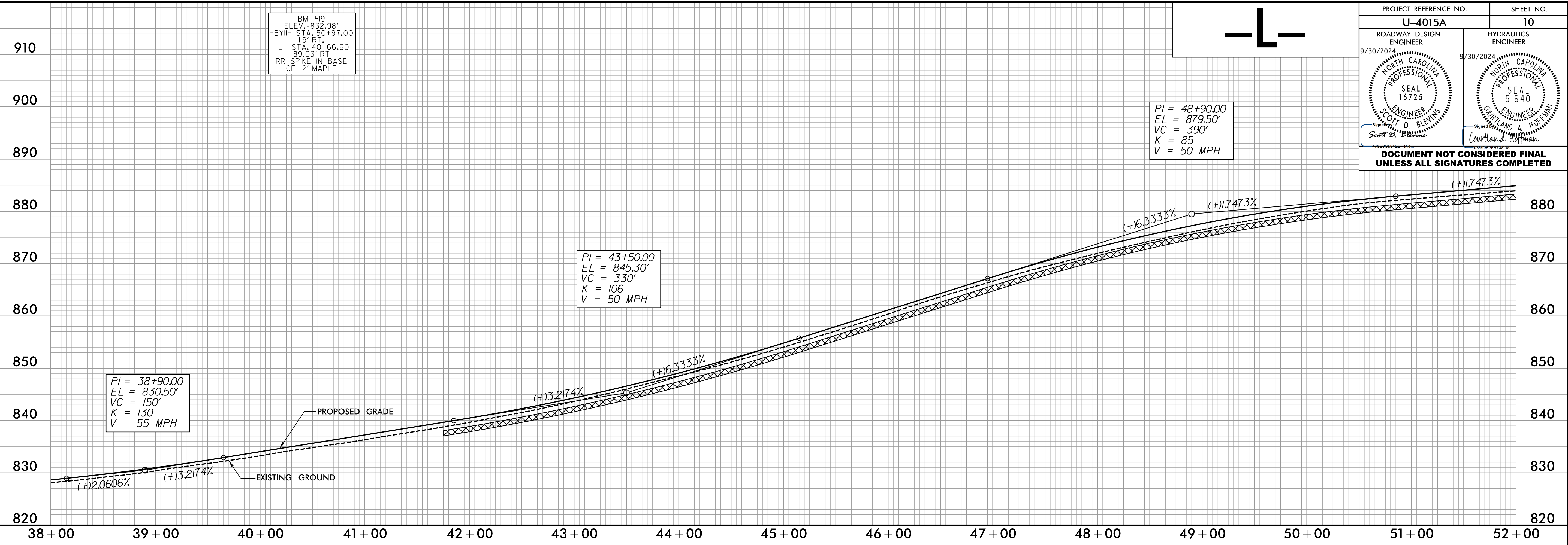


5/28/99

BM #19
ELEV.=832.98'
-BY11- STA. 50+97.00
19' RT.
-L- STA. 40+66.60
89.03' RT.
RR SPIKE IN BASE
OF 12' MAPLE

PI = 48+90.00
EL = 879.50'
VC = 390'
K = 85
V = 50 MPH

PROJECT REFERENCE NO. U-4015A	SHEET NO. 10
ROADWAY DESIGN ENGINEER 9/30/2024 	HYDRAULICS ENGINEER 9/30/2024
DOCUMENT NOT CONSIDERED FINAL UNLESS ALL SIGNATURES COMPLETED	



8/26/2024
R:\Projects\Proj\Prof\1e Sheets\U4015a_rdy_pf110.dgn

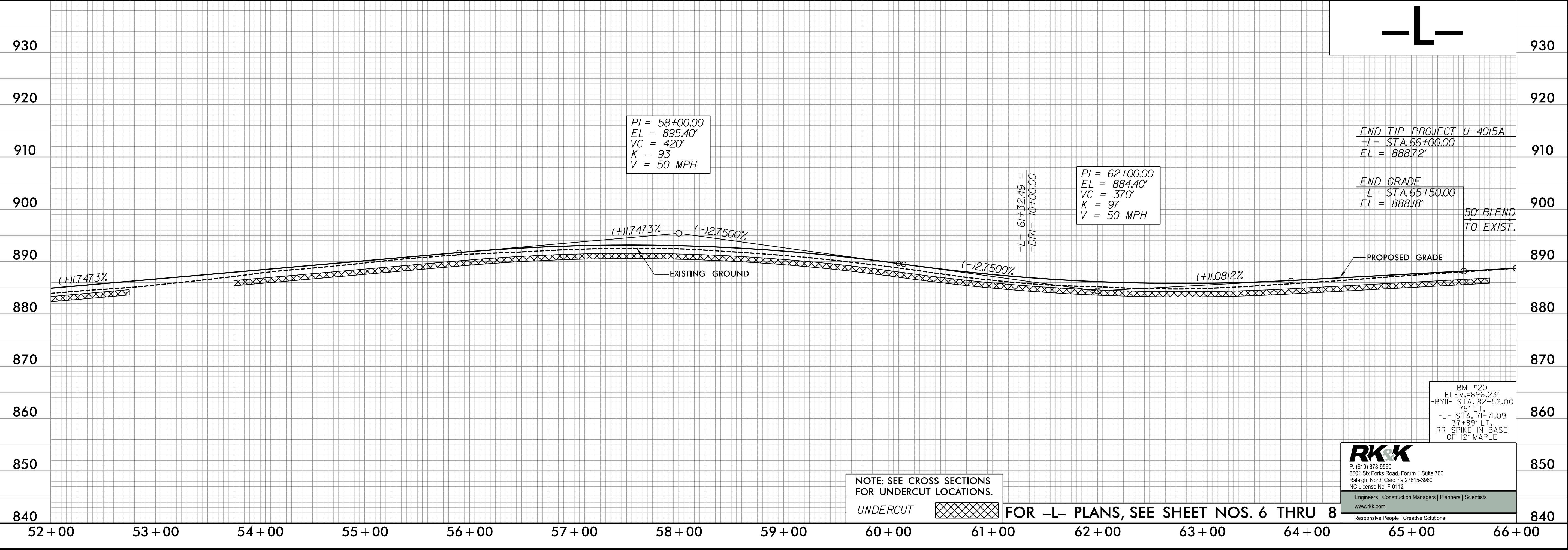
PI = 58+00.00
EL = 895.40'
VC = 420'
K = 93
V = 50 MPH

PI = 62+00.00
EL = 884.40'
VC = 370'
K = 97
V = 50 MPH

END TIP PROJECT U-4015A
-L- STA. 66+00.00
EL = 888.72'

END GRADE
-L- STA. 65+50.00
EL = 888.18'

50' BLEND
TO EXIST.



NOTE: SEE CROSS SECTIONS FOR UNDERCUT LOCATIONS.

UNDERCUT

FOR -L- PLANS, SEE SHEET NOS. 6 THRU 8

RK&K
P: (919) 678-8880
8601 Six Forks Road, Forum 1, Suite 700
Raleigh, North Carolina 27615-3960
NC License No. F-0112

Engineers | Construction Managers | Planners | Scientists
www.rkk.com
Responsive People | Creative Solutions

BM #20
ELEV.=896.23'
-BY11- STA. 82+52.00
75' LT.
-L- STA. 71+71.09
37+89' LT.
RR SPIKE IN BASE
OF 12' MAPLE