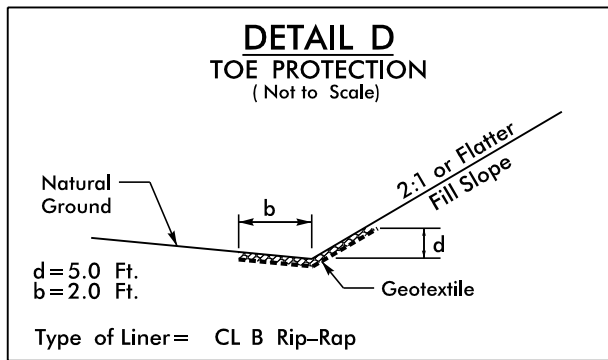
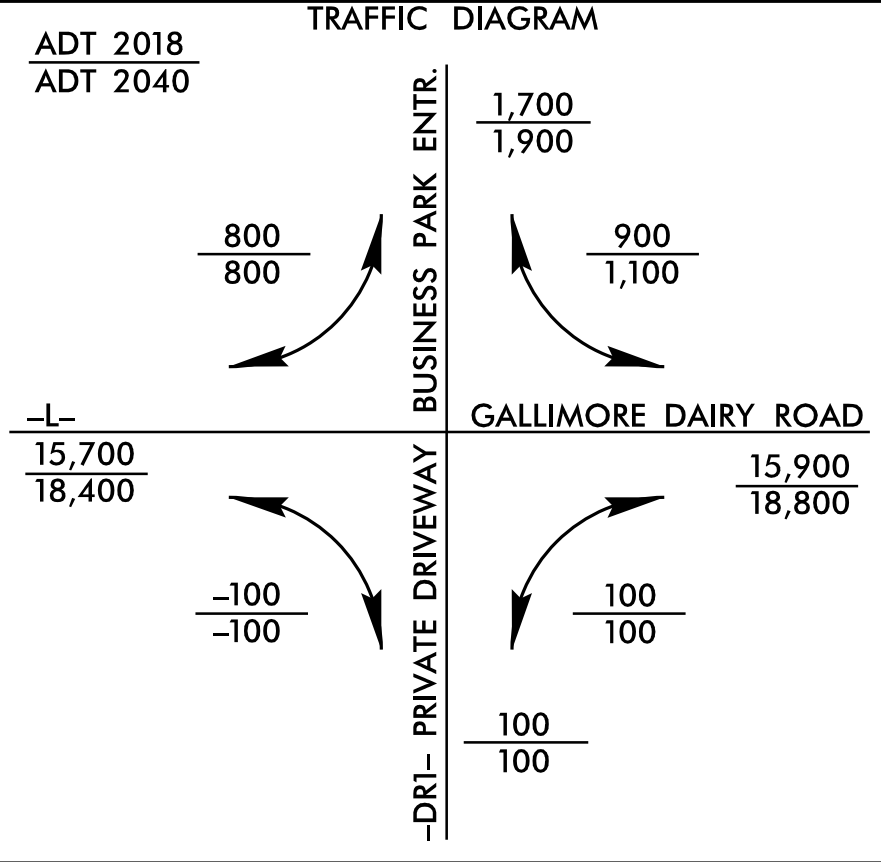
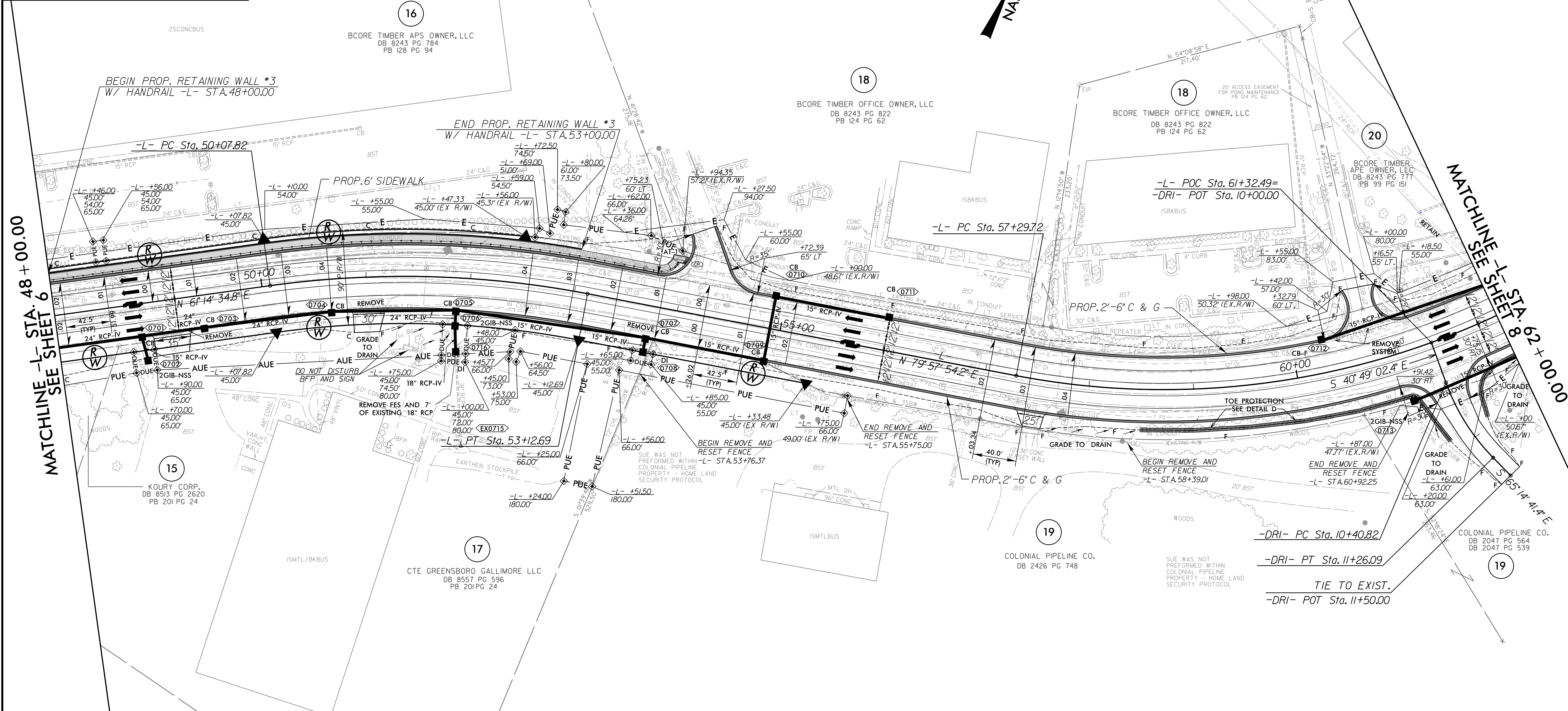


8/17/99



-DRI- STA. 10+45 TO STA. 10+90 LT
7.5 TON CL B RIP RAP / 75 SY GEOTEXTILE
-DRI- STA. 10+45 TO STA. 10+90 RT
7.5 TON CL B RIP RAP / 75 SY GEOTEXTILE
-L- STA. 58+50 TO STA. 61+05 RT
35 TON CL B RIP RAP / 400 SY GEOTEXTILE
-L- STA. 61+65 TO STA. 65+80 RT
60 TON CL B RIP RAP / 600 SY GEOTEXTILE

PROJECT REFERENCE NO. U-4015A	SHEET NO. 7
ROADWAY DESIGN ENGINEER 9/30/2024 SCOTT D. BLEWINS NORTH CAROLINA PROFESSIONAL SEAL 16725	HYDRAULICS ENGINEER 9/30/2024 COURTNEY A. HOFFMAN NORTH CAROLINA PROFESSIONAL SEAL 51640
DOCUMENT NOT CONSIDERED FINAL UNLESS ALL SIGNATURES COMPLETED	



-L-	-L-	-DRI-
PI Sta 51+61.63	PI Sta 61+23.12	PI Sta 10+84.11
Δ = 18' 43" 19.3" (RT)	Δ = 55' 21" 27.3" (LT)	Δ = 24' 25" 39.1" (LT)
D = 6' 08" 27.7"	D = 7' 38" 22.0"	D = 28' 38" 52.4"
L = 304.87'	L = 724.63'	L = 85.27'
T = 153.81'	T = 393.40'	T = 43.29'
R = 933.00'	R = 750.00'	R = 200.00'
SE = 4%	SE = 4%	SE = 2% (Stop)
DS = 50 mph	DS = 45 mph	DS = 15 mph
LR = 170'	LR = 160'	LR = 60'

FOR -L- PROFILE, SEE SHEET NO. 10
FOR -DRI- PROFILE, SEE SHEET NO. 11

RK&K
P: (919) 878-8580
8801 Six Forks Road, Forum 1, Suite 700
Raleigh, North Carolina 27615-3960
NC License No. F-0112

Engineers | Construction Managers | Planners | Scientists
www.rkk.com
Responsive People | Creative Solutions