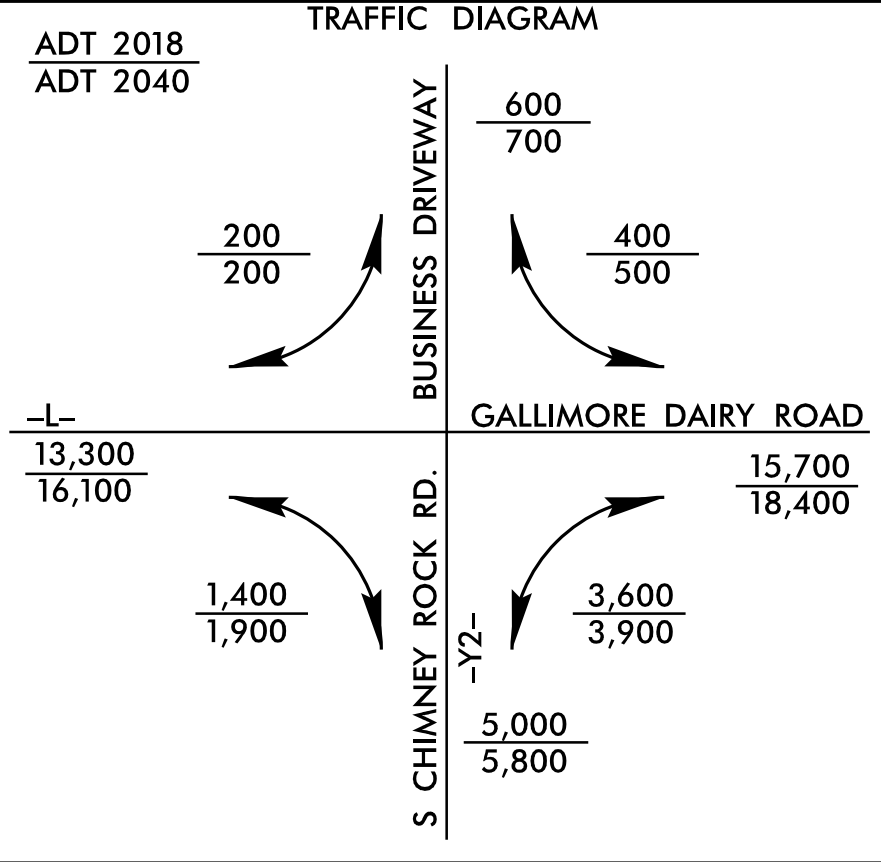


8/17/19



-L-	-Y2-
PI Sta 42+46.48	PI Sta 10+51.38
$\Delta = 17' 21" 23.4" (RT)$	$\Delta = 20' 25" 02.9" (LT)$
$D = 4' 28" 34.4"$	$D = 38' 11" 49.9"$
$L = 387.75'$	$L = 53.45'$
$T = 195.37'$	$T = 27.01'$
$R = 1,280.00'$	$R = 150.00'$
$SE = 4\%$	$SE = 4\%$
$DS = 55 \text{ mph}$	$DS = 40 \text{ MPH}$
$LR = 170'$	$LR = 120'$

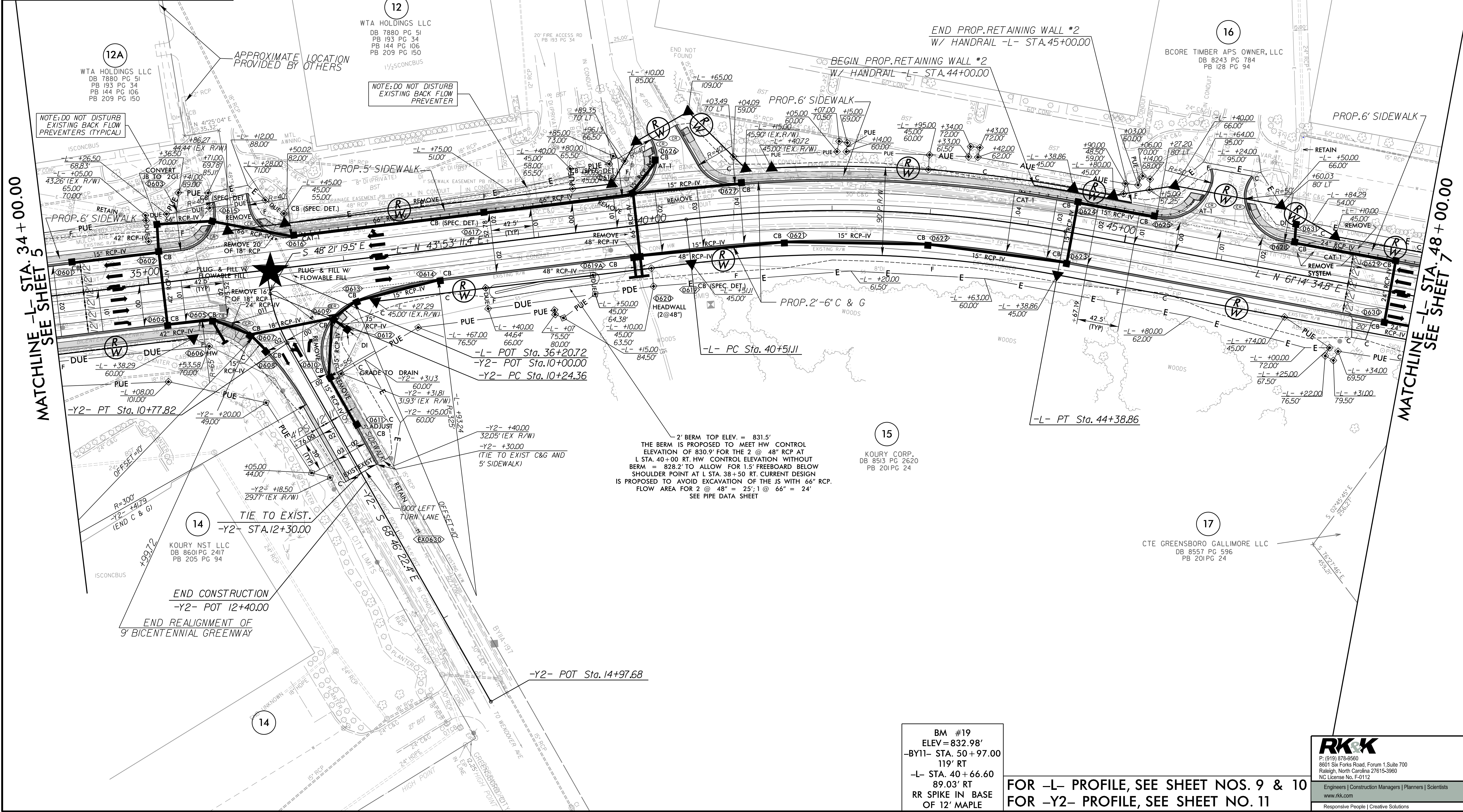
PROJECT REFERENCE NO. **U-4015A** SHEET NO. **6**

RW SHEET NO.

ROADWAY DESIGN ENGINEER
9/30/2024
NORTH CAROLINA PROFESSIONAL SEAL 16725
SCOTT D. BLEWINS

HYDRAULICS ENGINEER
9/30/2024
NORTH CAROLINA PROFESSIONAL SEAL 51640
COURTLAND A. HOFFMAN

DOCUMENT NOT CONSIDERED FINAL UNLESS ALL SIGNATURES COMPLETED



MATCHLINE -L- STA. 34+00.00
SEE SHEET 5

MATCHLINE -L- STA. 48+00.00
SEE SHEET 7

12A
WTA HOLDINGS LLC
DB 7880 PG 51
PB 193 PG 34
PB 144 PG 106
PB 209 PG 150

NOTE: DO NOT DISTURB EXISTING BACK FLOW PREVENTERS (TYPICAL)

12
WTA HOLDINGS LLC
DB 7880 PG 51
PB 193 PG 34
PB 144 PG 106
PB 209 PG 150

NOTE: DO NOT DISTURB EXISTING BACK FLOW PREVENTER

16
BCORE TIMBER APS OWNER, LLC
DB 8243 PG 784
PB 128 PG 94

15
KOURY CORP.
DB 8513 PG 2620
PB 201 PG 24

14
KOURY NST, LLC
DB 8601 PG 2417
PB 205 PG 94

END CONSTRUCTION
-Y2- POT 12+40.00

END REALIGNMENT OF
9' BICENTENNIAL GREENWAY

17
CTE GREENSBORO GALLIMORE LLC
DB 8557 PG 596
PB 201 PG 24

2' BERM TOP ELEV. = 831.5'
THE BERM IS PROPOSED TO MEET HW CONTROL ELEVATION OF 830.9' FOR THE 2 @ 48" RCP AT L STA. 40+00 RT. HW CONTROL ELEVATION WITHOUT BERM = 828.2' TO ALLOW FOR 1.5' FREEBOARD BELOW SHOULDER POINT AT L STA. 38+50 RT. CURRENT DESIGN IS PROPOSED TO AVOID EXCAVATION OF THE JS WITH 66" RCP. FLOW AREA FOR 2 @ 48" = 25'; 1 @ 66" = 24' SEE PIPE DATA SHEET

BM #19
ELEV = 832.98'
-BY11- STA. 50+97.00
119' RT
-L- STA. 40+66.60
89.03' RT
RR SPIKE IN BASE OF 12' MAPLE

FOR -L- PROFILE, SEE SHEET NOS. 9 & 10
FOR -Y2- PROFILE, SEE SHEET NO. 11

RK&K

P: (919) 878-6680
8801 Six Forks Road, Forum 1, Suite 700
Raleigh, North Carolina 27615-3960
NC License No. F-0112

Engineers | Construction Managers | Planners | Scientists
www.rkk.com
Responsive People | Creative Solutions