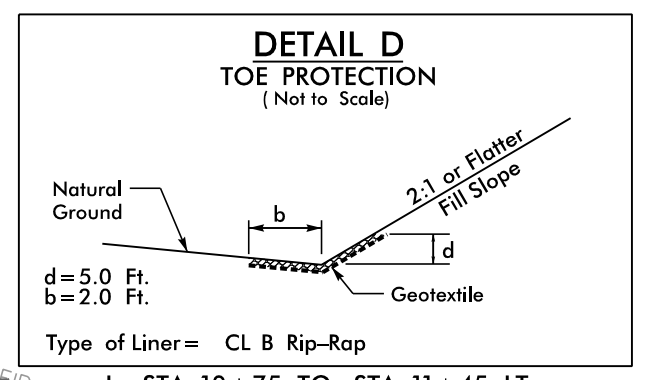
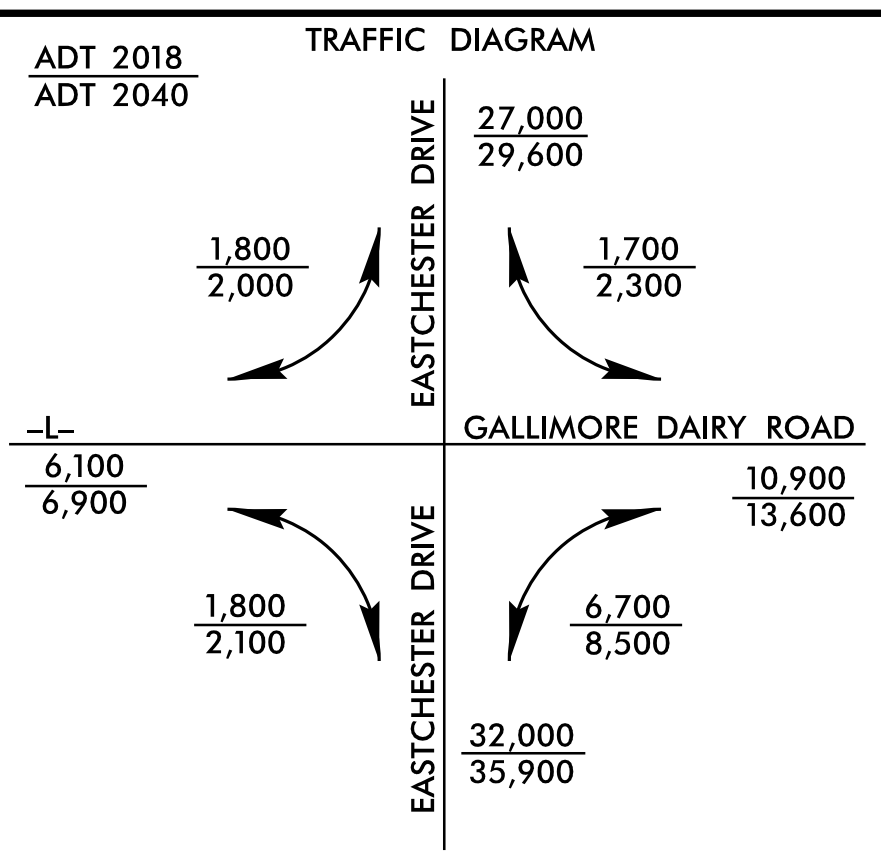
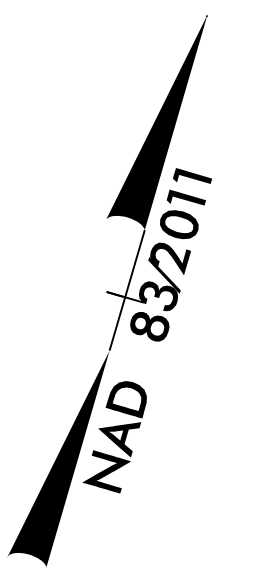
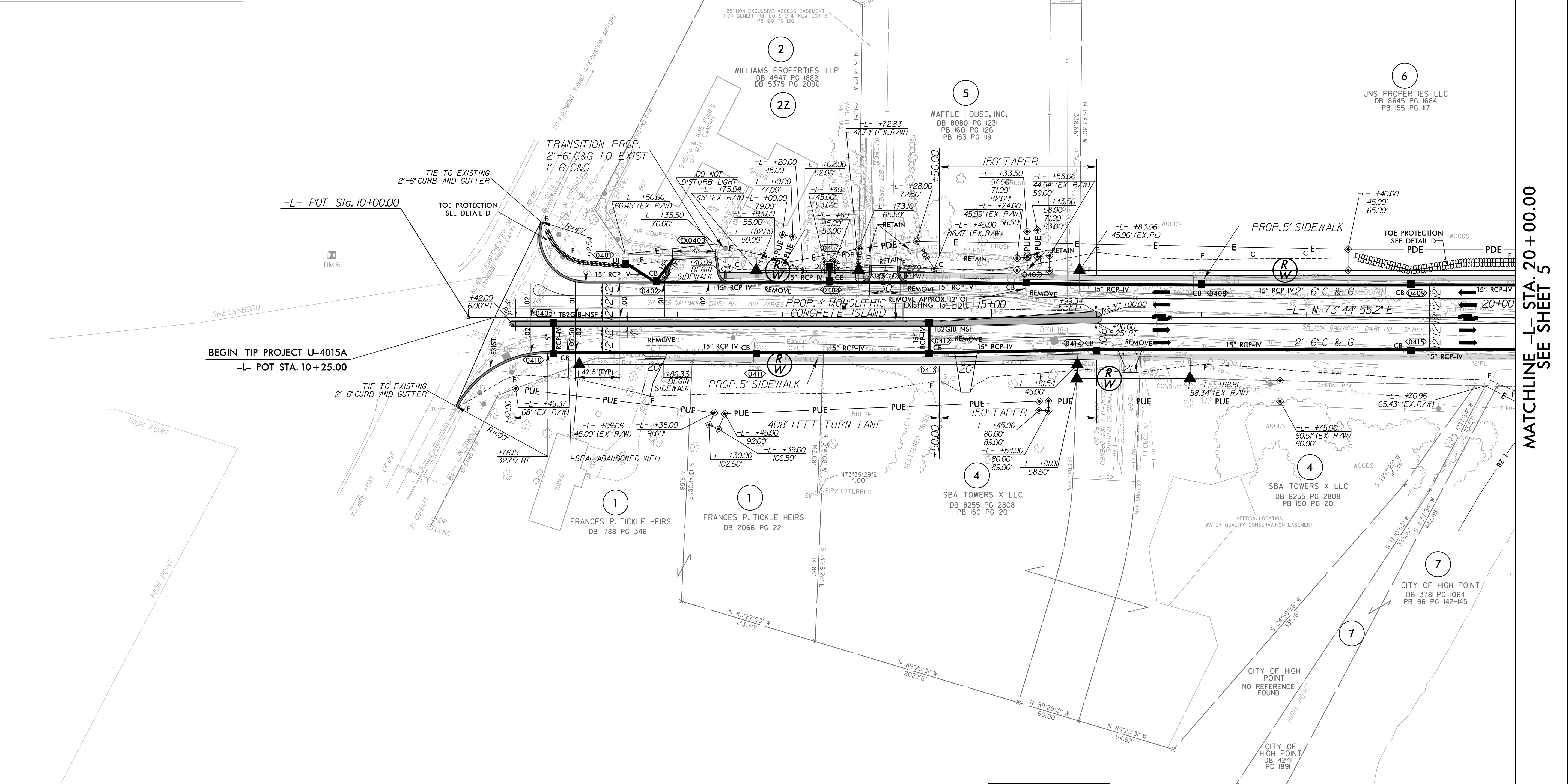


8.17.19



PROJECT REFERENCE NO. <b>U-4015A</b>	SHEET NO. <b>4</b>
ROADWAY DESIGN ENGINEER 9/30/2019 <b>SCOTT D. BLEVINS</b> SEAL 16725 Scott D. Blevins	HYDRAULICS ENGINEER 9/30/2019 <b>COURTLAND A. HOFFMAN</b> SEAL 51640 Courtland Hoffman
<b>DOCUMENT NOT CONSIDERED FINAL UNLESS ALL SIGNATURES COMPLETED</b>	



MATCHLINE -L- STA. 20+00.00  
SEE SHEET 5

BM #16  
ELEV = 868.49'  
-BL- STA. 205+93.00  
193' LT  
PAINT DOT ON  
FLANGE BOLT AT  
SW SIDE OF HYDRANT

FOR -L- PROFILE, SEE SHEET NO. 9

**RK&K**  
P: (919) 878-9560  
8801 Six Forks Road, Forum 1, Suite 700  
Raleigh, North Carolina 27615-3960  
NC License No. F-0112  
www.rk.com  
Engineers | Construction Managers | Planners | Scientists  
Responsive People | Creative Solutions